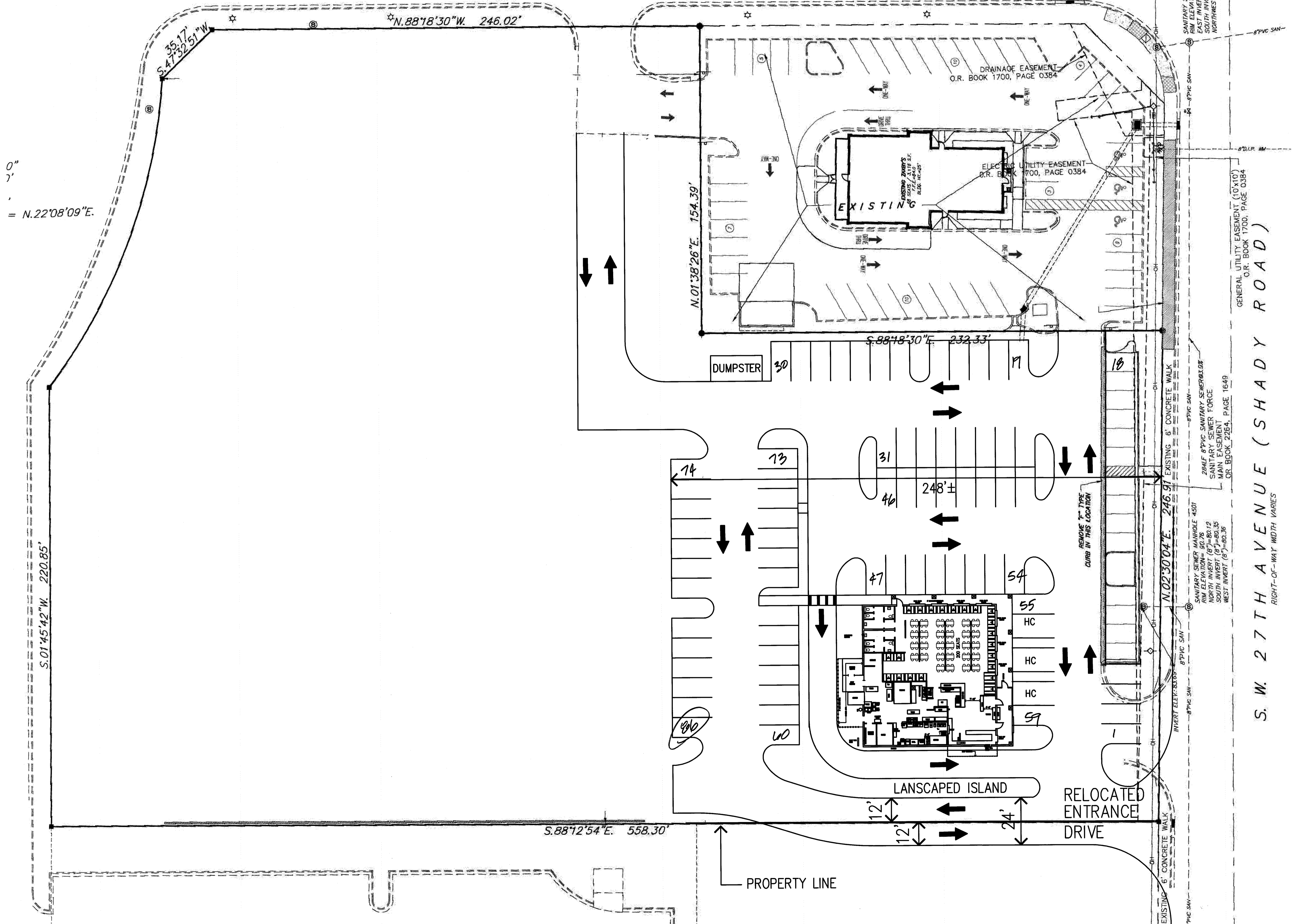


ENTRANCE ROAD
TO PADDOCK MALL

0"
1"
= N.22°08'09"E.



S. W. 27TH AVENUE (SHADY ROAD)
RIGHT-OF-WAY WIDTH VARIES

LOT 3
"PADDOCK MALL SUBDIVISION"
PLAT BOOK "2", PAGE 72

LOT 5
"PADDOCK MALL SUBDIVISION"

Revised	Description of Revision	By
	Daniel Johns, P.E. Professional Engineer #54037 3869 S. Nova Rd. - Suite 4 Port Orange, Florida 32127 phone 386-756-8582 e-mail danjohns@djengineers.com	
CONCEPT SITE PLAN		
DUSTINS		
Ocala, Florida		
file: *	date: 10-26-10	scale: NTS
		sheet: of