

560 SF SECOND FLOOR OFFICE | FOR LEASE
375 SUNRISE HIGHWAY SUITE # 2
LYNBROOK NEW YORK



For More Information:

Michael G. Murphy

President | Commercial Division
Douglas Elliman Commercial - Long Island
631.858.2460
michael.murphy@elliman.com

Jessica Hollenstein

LICENSED REAL ESTATE
SALESPERSON
DOUGLAS ELLIMAN REAL ESTATE
516.522.4969
jessica.hollenstein@elliman.com

 **Douglas Elliman**
Commercial

WWW.ELLIMANCOMMERCIAL.COM

THE PROPERTY CONTAINED WITHIN THIS DOCUMENT IS BEING EXCLUSIVELY REPRESENTED BY DOUGLAS ELLIMAN REAL ESTATE COMMERCIAL DIVISION, 650 SMITHTOWN BYPASS STE. 117 SMITHTOWN, NY 11787 631 858-2400 © 2023 DOUGLAS ELLIMAN COMMERCIAL OF LI, LLC. ALL MATERIAL PRESENTED HEREIN IS INTENDED FOR INFORMATION PURPOSES ONLY. WHILE THIS INFORMATION IS BELIEVED TO BE CORRECT, IT IS REPRESENTED SUBJECT TO ERRORS, OMISSIONS, CHANGES OR WITHDRAWAL WITHOUT NOTICE. ALL PROPERTY INFORMATION, INCLUDING, BUT NOT LIMITED TO SQUARE FOOTAGE, ROOM COUNT, ZONING IN THE LISTING SHOULD BE VERIFIED BY YOUR OWN ATTORNEY, ARCHITECT OR ZONING EXPERT. IF YOUR PROPERTY IS CURRENTLY LISTED WITH ANOTHER REAL ESTATE BROKER, PLEASE DISREGARD THIS OFFER. IT IS NOT OUR INTENTION TO SOLICIT THE OFFERINGS OF OTHER REAL ESTATE BROKERS. WE COOPERATE WITH THEM FULLY. EQUAL HOUSING OPPORTUNITY.



560 SF OFFICE FOR LEASE

375 SUNRISE HIGHWAY STE. 1 | LYNBROOK, NY



Offering Summary

Lease Rate:	\$1,650.00/month
Available SF:	560 SF
Floor:	Second
Heat/HVAC:	GAS

Property Overview

Prime Office Space in Fantastic Location! Renovated 560sf office situated on 2nd floor of walk-up building, perfect for small business owners, entrepreneurs, and professional service providers. This quiet, versatile office includes 2 separate offices and a waiting room that can also serve as a 3rd office or employee area. Storage space for office supplies and equipment. A shared conference room on the same floor is available for use. 24/7 access. Central air. Tenant pays electric, while landlord covers heat. Includes 1 designated parking spot. Just one block from the LIRR and municipal parking.

Property Highlights

- CONTACT JESSICA HOLLENSTEIN FOR ALL INFORMATION AND SHOWINGS: (516) 522-4969.
- Excellent Location on Heavily Traveled Sunrise Highway!
- Landlord pays heat. Tenant Pays Electric.
- Shared Conference Room Available

For More Information:

Michael G. Murphy

President | Commercial Division
 Douglas Elliman Commercial - Long Island
 631.858.2460
 michael.murphy@elliman.com

Jessica Hollenstein

LICENSED REAL ESTATE SALESPERSON
 DOUGLAS ELLIMAN REAL ESTATE
 516.522.4969
 jessica.hollenstein@elliman.com



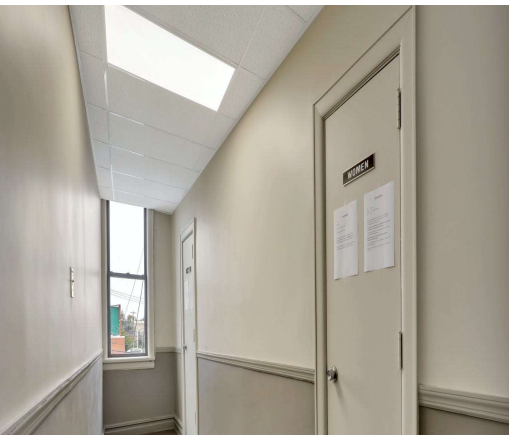
WWW.ELLIMANCOMMERCIAL.COM

THE PROPERTY CONTAINED WITHIN THIS DOCUMENT IS BEING EXCLUSIVELY REPRESENTED BY DOUGLAS ELLIMAN REAL ESTATE COMMERCIAL DIVISION, 550 SMITHTOWN BYPASS STE. 117 SMITHTOWN, NY 11787 631.858.2405 © 2023 DOUGLAS ELLIMAN COMMERCIAL OF LI, LLC. ALL MATERIAL PRESENTED HEREIN IS INTENDED FOR INFORMATION PURPOSES ONLY. WHILE THIS INFORMATION IS BELIEVED TO BE CORRECT, IT IS REPRESENTED SUBJECT TO ERRORS, OMISSIONS, CHANGES OR WITHDRAWAL WITHOUT NOTICE. ALL PROPERTY INFORMATION, INCLUDING, BUT NOT LIMITED TO SQUARE FOOTAGE, ROOM COUNT, ZONING IN THE LISTING SHOULD BE VERIFIED BY YOUR OWN ATTORNEY, ARCHITECT OR ZONING EXPERT. IF YOUR PROPERTY IS CURRENTLY LISTED WITH ANOTHER REAL ESTATE BROKER, PLEASE DISREGARD THIS OFFER. IT IS NOT OUR INTENTION TO SOLICIT THE OFFERINGS OF OTHER REAL ESTATE BROKERS. WE COOPERATE WITH THEM FULLY. EQUAL HOUSING OPPORTUNITY.



Property Photos

375 SUNRISE HIGHWAY STE. 1 | LYNBROOK, NY



For More Information:

Michael G. Murphy

President | Commercial Division
Douglas Elliman Commercial - Long Island
631.858.2460
michael.murphy@elliman.com

Jessica Hollenstein

LICENSED REAL ESTATE SALESPERSON
DOUGLAS ELLIMAN REAL ESTATE
516.522.4969
jessica.hollenstein@elliman.com

 **Douglas Elliman**
Commercial

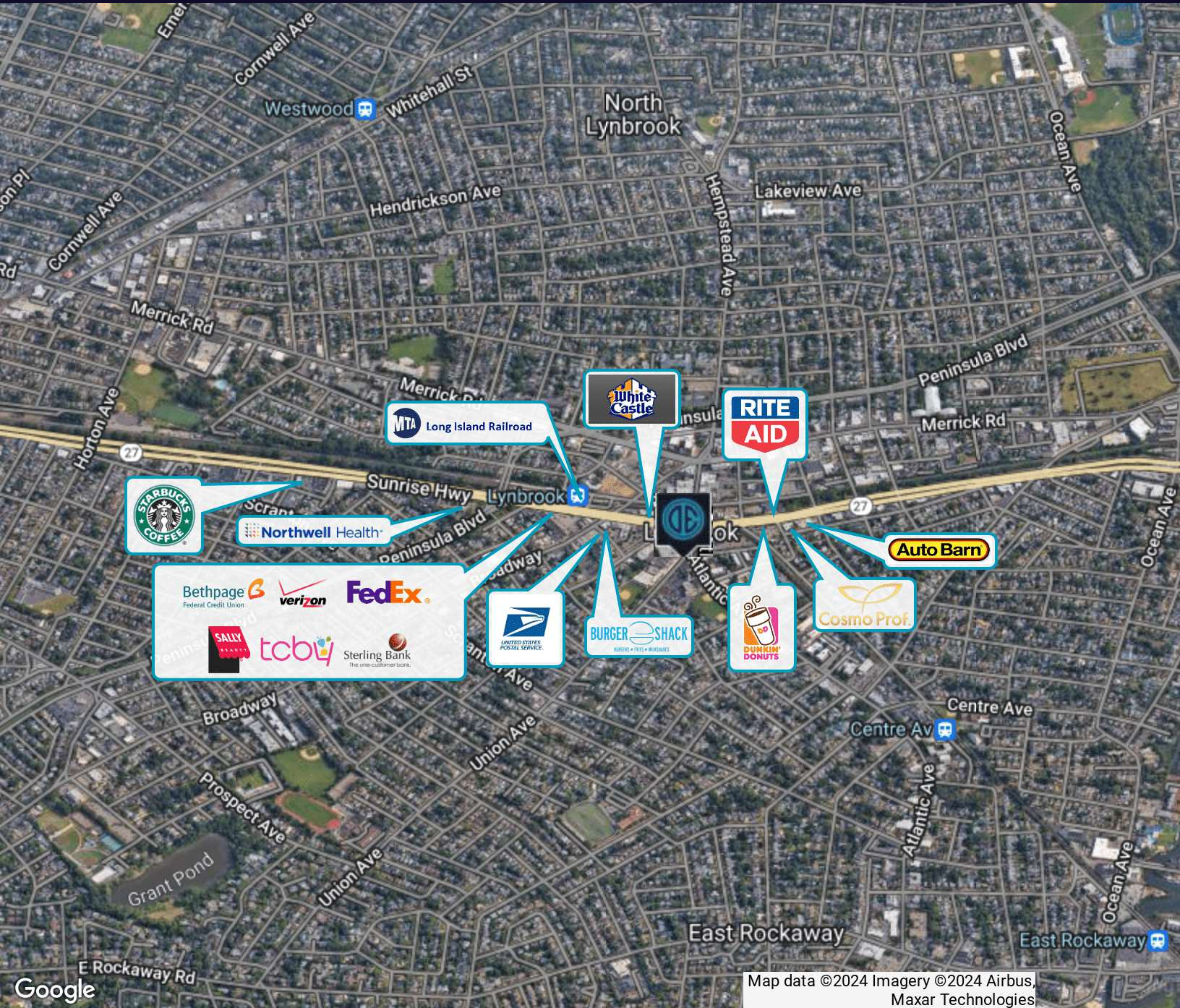
WWW.ELLIMANCOMMERCIAL.COM

THE PROPERTY CONTAINED WITHIN THIS DOCUMENT IS BEING EXCLUSIVELY REPRESENTED BY DOUGLAS ELLIMAN REAL ESTATE COMMERCIAL DIVISION, 550 SMITHTOWN BYPASS STE. 117 SMITHTOWN, NY 11787 631.858.2405 © 2023 DOUGLAS ELLIMAN COMMERCIAL OF LI, LLC. ALL MATERIAL PRESENTED HEREIN IS INTENDED FOR INFORMATION PURPOSES ONLY. WHILE THIS INFORMATION IS BELIEVED TO BE CORRECT, IT IS REPRESENTED SUBJECT TO ERRORS, OMISSIONS, CHANGES OR WITHDRAWAL WITHOUT NOTICE. ALL PROPERTY INFORMATION, INCLUDING, BUT NOT LIMITED TO SQUARE FOOTAGE, ROOM COUNT, ZONING IN THE LISTING SHOULD BE VERIFIED BY YOUR OWN ATTORNEY, ARCHITECT OR ZONING EXPERT. IF YOUR PROPERTY IS CURRENTLY LISTED WITH ANOTHER REAL ESTATE BROKER, PLEASE DISREGARD THIS OFFER. IT IS NOT OUR INTENTION TO SOLICIT THE OFFERINGS OF OTHER REAL ESTATE BROKERS. WE COOPERATE WITH THEM FULLY. EQUAL HOUSING OPPORTUNITY.



Local + National Retailer Map

375 SUNRISE HIGHWAY STE. 1 | LYNBROOK, NY



Map data ©2024 Imagery ©2024 Airbus, Maxar Technologies

For More Information:

Michael G. Murphy

President | Commercial Division
Douglas Elliman Commercial - Long Island
631.858.2460
michael.murphy@elliman.com

Jessica Hollenstein

LICENSED REAL ESTATE SALESPERSON
DOUGLAS ELLIMAN REAL ESTATE
516.522.4969
jessica.hollenstein@elliman.com

Douglas Elliman
Commercial

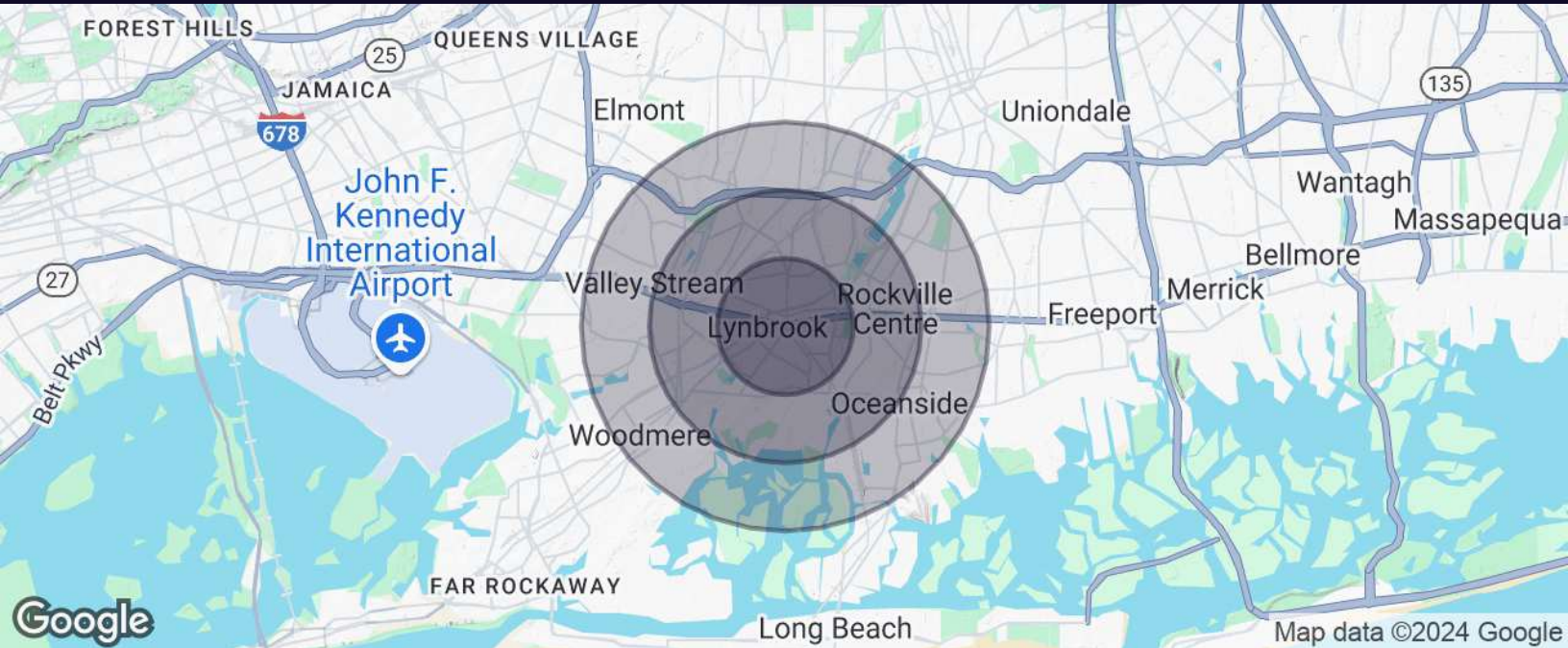
WWW.ELLIMANCOMMERCIAL.COM

THE PROPERTY CONTAINED WITHIN THIS DOCUMENT IS BEING EXCLUSIVELY REPRESENTED BY DOUGLAS ELLIMAN REAL ESTATE COMMERCIAL DIVISION, 550 SMITHTOWN BYPASS STE. 117 SMITHTOWN, NY 11787 631.858.2405 © 2023 DOUGLAS ELLIMAN COMMERCIAL OF LI, LLC. ALL MATERIAL PRESENTED HEREIN IS INTENDED FOR INFORMATION PURPOSES ONLY. WHILE THIS INFORMATION IS BELIEVED TO BE CORRECT, IT IS REPRESENTED SUBJECT TO ERRORS, OMISSIONS, CHANGES OR WITHDRAWAL WITHOUT NOTICE. ALL PROPERTY INFORMATION, INCLUDING, BUT NOT LIMITED TO SQUARE FOOTAGE, ROOM COUNT, ZONING IN THE LISTING SHOULD BE VERIFIED BY YOUR OWN ATTORNEY, ARCHITECT OR ZONING EXPERT. IF YOUR PROPERTY IS CURRENTLY LISTED WITH ANOTHER REAL ESTATE BROKER, PLEASE DISREGARD THIS OFFER. IT IS NOT OUR INTENTION TO SOLICIT THE OFFERINGS OF OTHER REAL ESTATE BROKERS. WE COOPERATE WITH THEM FULLY. EQUAL HOUSING OPPORTUNITY.



PROPERTY DEMOGRAPHICS

375 SUNRISE HIGHWAY Lynbrook, NY 11563



Population	1 Mile	2 Miles	3 Miles
Total Population	29,228	96,259	193,863
Average Age	42.9	42.0	41.5
Average Age (Male)	39.9	39.6	39.1
Average Age (Female)	45.4	43.9	43.3

Households & Income	1 Mile	2 Miles	3 Miles
Total Households	10,895	34,812	67,683
# of Persons per HH	2.7	2.8	2.9
Average HH Income	\$98,248	\$106,781	\$110,406
Average House Value	\$459,202	\$494,794	\$506,892

For More Information:

Michael G. Murphy

President | Commercial Division
Douglas Elliman Commercial - Long Island
631.858.2460
michael.murphy@elliman.com

Jessica Hollenstein

LICENSED REAL ESTATE SALESPERSON
DOUGLAS ELLIMAN REAL ESTATE
516.522.4969
jessica.hollenstein@elliman.com



WWW.ELLIMANCOMMERCIAL.COM

THE PROPERTY CONTAINED WITHIN THIS DOCUMENT IS BEING EXCLUSIVELY REPRESENTED BY DOUGLAS ELLIMAN REAL ESTATE COMMERCIAL DIVISION, 550 SMITHTOWN BYPASS STE. 117 SMITHTOWN, NY 11787 631.858.2405 © 2023 DOUGLAS ELLIMAN COMMERCIAL OF LI, LLC. ALL MATERIAL PRESENTED HEREIN IS INTENDED FOR INFORMATION PURPOSES ONLY. WHILE THIS INFORMATION IS BELIEVED TO BE CORRECT, IT IS REPRESENTED SUBJECT TO ERRORS, OMISSIONS, CHANGES OR WITHDRAWAL WITHOUT NOTICE. ALL PROPERTY INFORMATION, INCLUDING, BUT NOT LIMITED TO SQUARE FOOTAGE, ROOM COUNT, ZONING IN THE LISTING SHOULD BE VERIFIED BY YOUR OWN ATTORNEY, ARCHITECT OR ZONING EXPERT. IF YOUR PROPERTY IS CURRENTLY LISTED WITH ANOTHER REAL ESTATE BROKER, PLEASE DISREGARD THIS OFFER. IT IS NOT OUR INTENTION TO SOLICIT THE OFFERINGS OF OTHER REAL ESTATE BROKERS. WE COOPERATE WITH THEM FULLY. EQUAL HOUSING OPPORTUNITY.

WE ARE COMMERCIAL REAL ESTATE

Commercial real estate involves more than just property listings. To get the most effective results, you need to partner with a company that has a full complement of services and an in-depth team of professionals to help with all of your needs. Douglas Elliman's team of commercial real estate experts is committed to unrivaled performance standards when working with tenants, investors, purchasers and owners. We represent all major property types including office, industrial, retail, apartment and land. We treat each assignment with commitment and focus, from a single transaction in a local market to national and multi-market assignments. We help negotiate contracts, coordinate construction and provide both property management as well as ongoing advisory service to satisfy your changing real estate needs. Our breadth of market knowledge, unprecedented network and use of innovative technology extend to all types of property transactions.

For More Information:

Michael G. Murphy

President | Commercial Division
631.858.2460
michael.murphy@elliman.com

Jessica Hollenstein

LICENSED REAL ESTATE SALESPERSON
516.522.4969
jessica.hollenstein@elliman.com

Office: 631.858.2405

Fax: 631.543.0851

550 Smithtown Bypass
Smithtown, NY 11787