

AVAILABLE

The Offices

at

EASTERN WHARF

SAVANNAH

Downtown Savannah
Class A Office Space



Ashley W. Smith SIOR, CCIM

Principal
+1 912 662 8011
ashley.smith@colliers.com



Property Summary

The Offices at Eastern Wharf are situated on the eastern edge of Downtown Savannah, within the 54-acre Eastern Wharf development. This vibrant area features community parks, shops, restaurants, luxury hotel rooms, and stunning waterfront residences. Just a 15-minute walk from the Central Business District and conveniently located off Truman Parkway, The Offices provide an ideal location for various commuters and easy access to downtown amenities. The buildings boast a modern, contemporary design with efficient floor plans tailored to meet tenants' standards.



Live/Work/Play - Located within a new, mixed-use development



Abundant Parking - City deck parking available and a free shuttle service



Commuting - Walkable location with easy access to public transportation



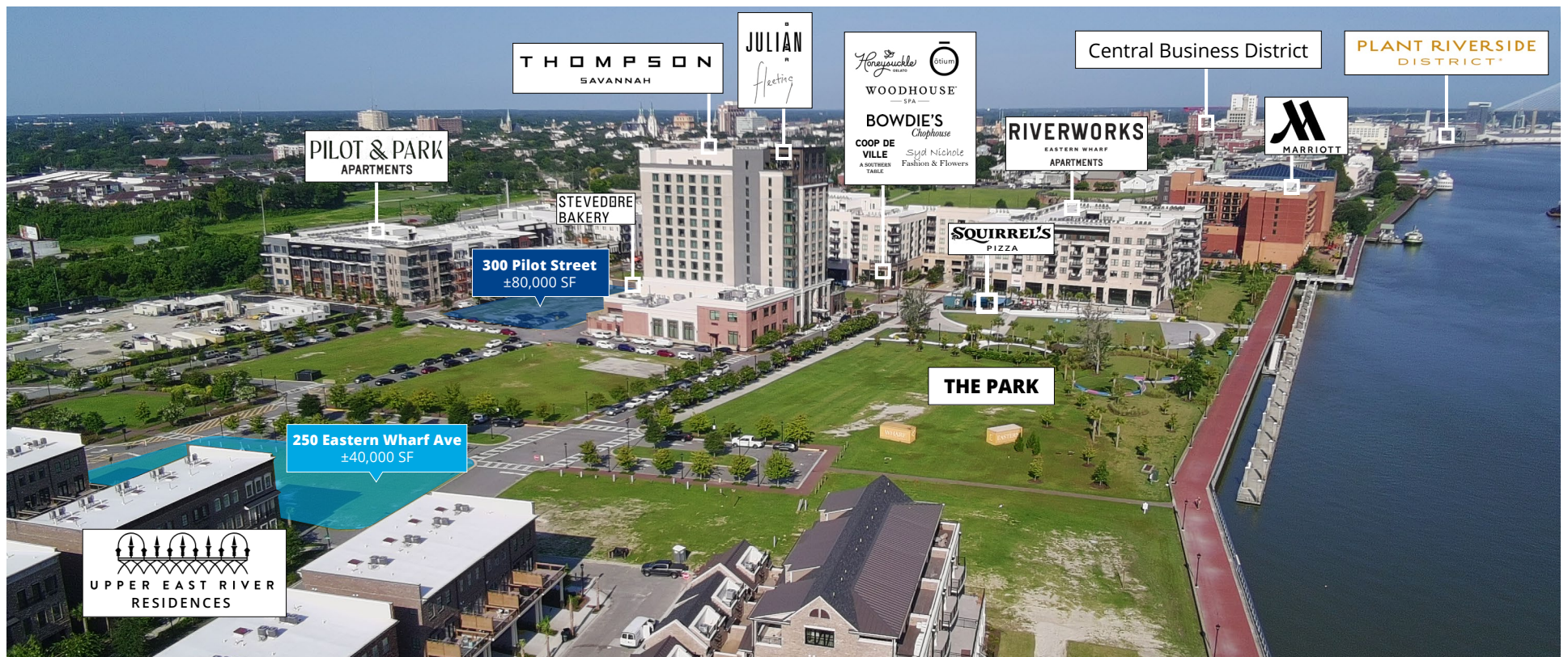
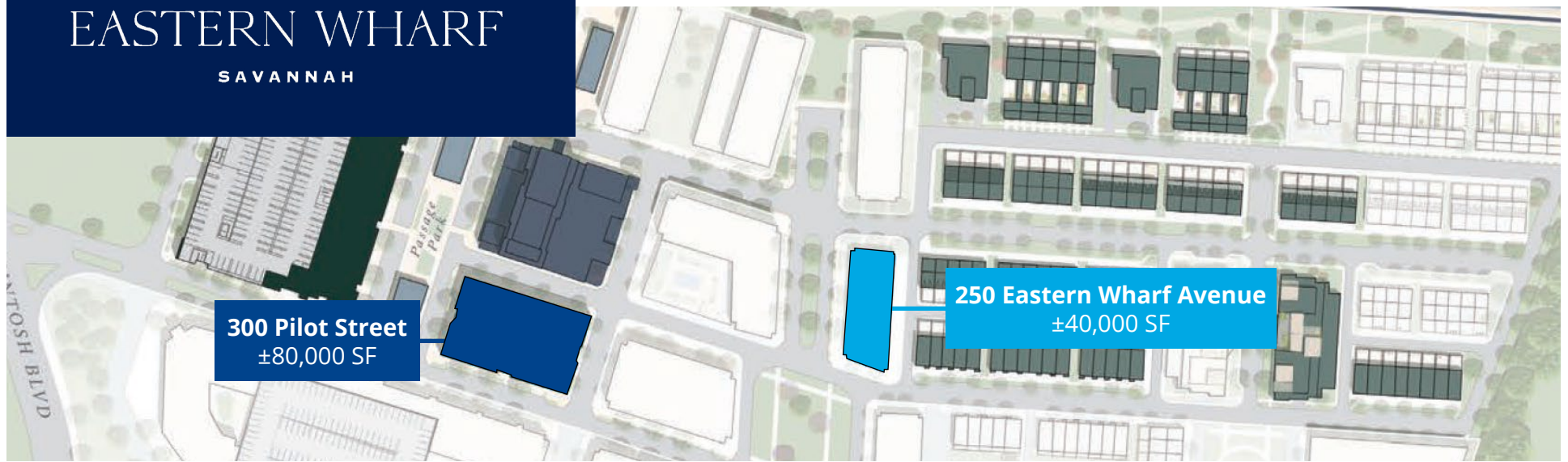
Amenities - Near a variety of dining options, shops & outdoor space



Class A Space - Modern, contemporary concept designed to maximize space

EASTERN WHARF

SAVANNAH



The Offices

Two Buildings

±40,000 SF & ±80,000 SF

Loft Style

Architecture

Column Free

Floor Plans

Floor-to-Ceiling

Windows

10 Foot

Ceiling Height

300 Pilot Street | ±80,000 SF (Expandable) | Four Stories



250 Eastern Wharf Avenue | ±40,000 SF (Expandable) | Three Stories



AVAILABLE | The Offices at Eastern Wharf

Floor Plans

300 Pilot Street
±80,000 SF

First Floor | ±16,694 SF



Floor Plans

300 Pilot Street
±80,000 SF

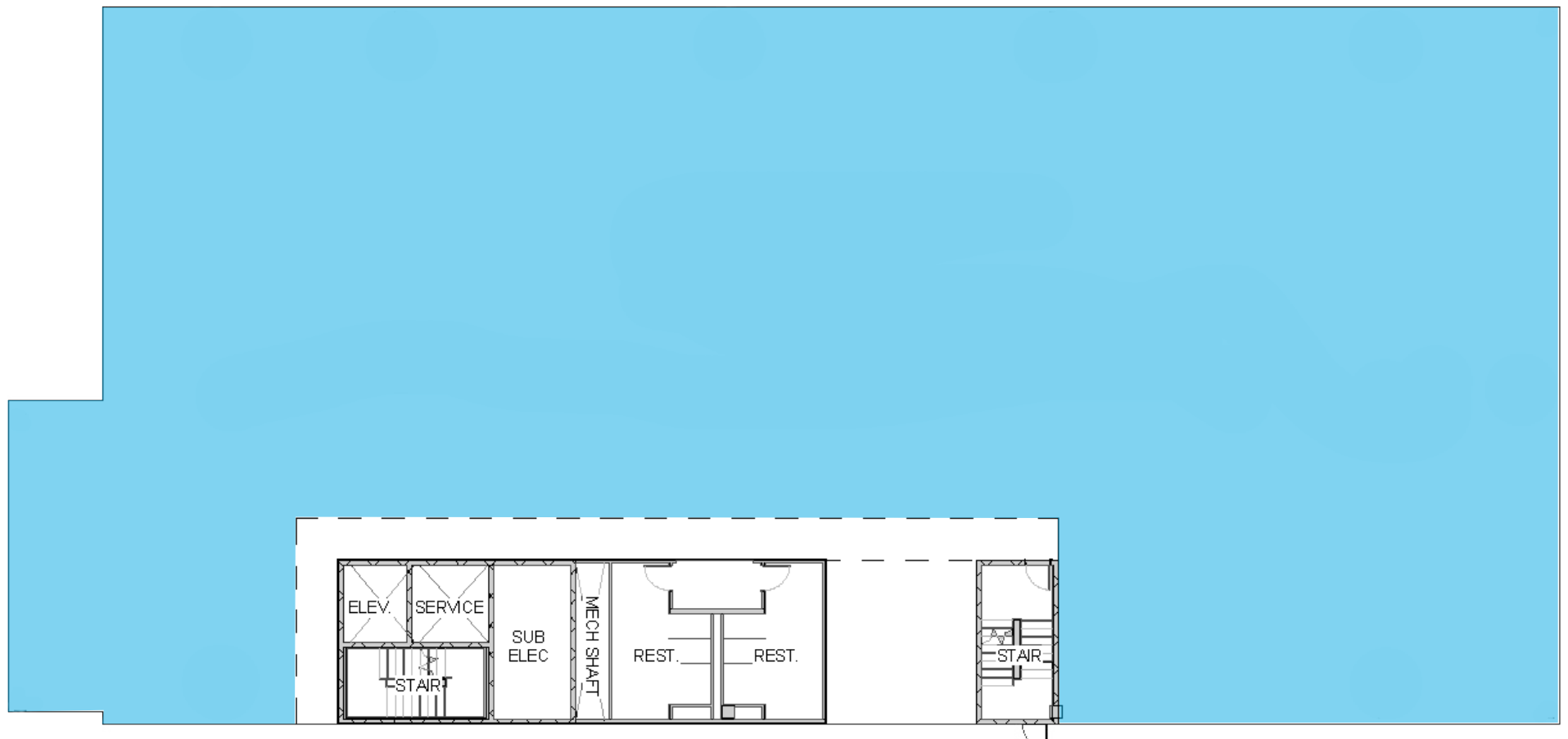
Typical Floor | ±20,000 SF



Floor Plans

250 Eastern Wharf Avenue
±40,000 SF

Typical Floor | ±15,982 SF



Modern Concept

Built to the **highest standard**
with **maximum efficiency**

Dedicated Tenant Signage



Open Floor Plans



Floor-to-Ceiling Glass Windows



Contemporary Design: Loft Brick Base with a Steel Glass Top



Convenient Commute

The Offices are conveniently situated off Truman Parkway with close proximity to Interstate 16 and a short walk from the Central Business District.

Downtown Savannah

Truman Parkway

0.8 Miles

2 Minute Drive

Central Business District

0.8 Miles

15 Minute Walk

Interstate 16

1.6 Miles

8 Minute Drive

Greater Savannah Area

Port of Savannah

6.5 Miles

20 Minute Drive

Pooler, Georgia

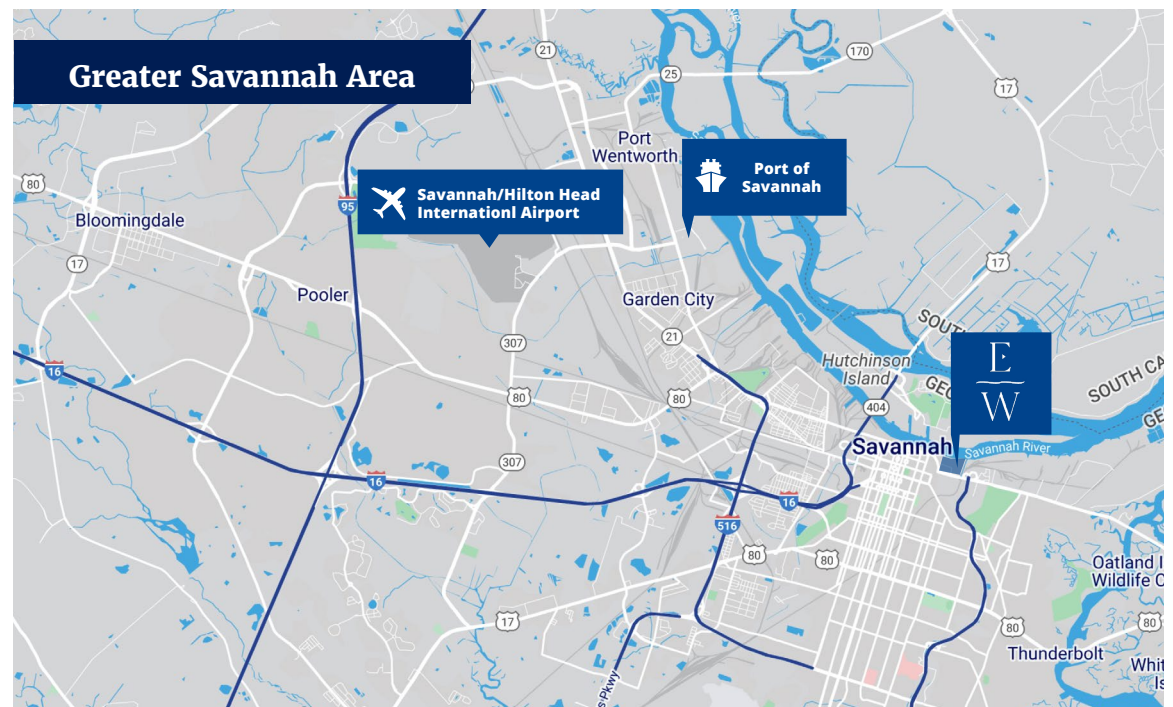
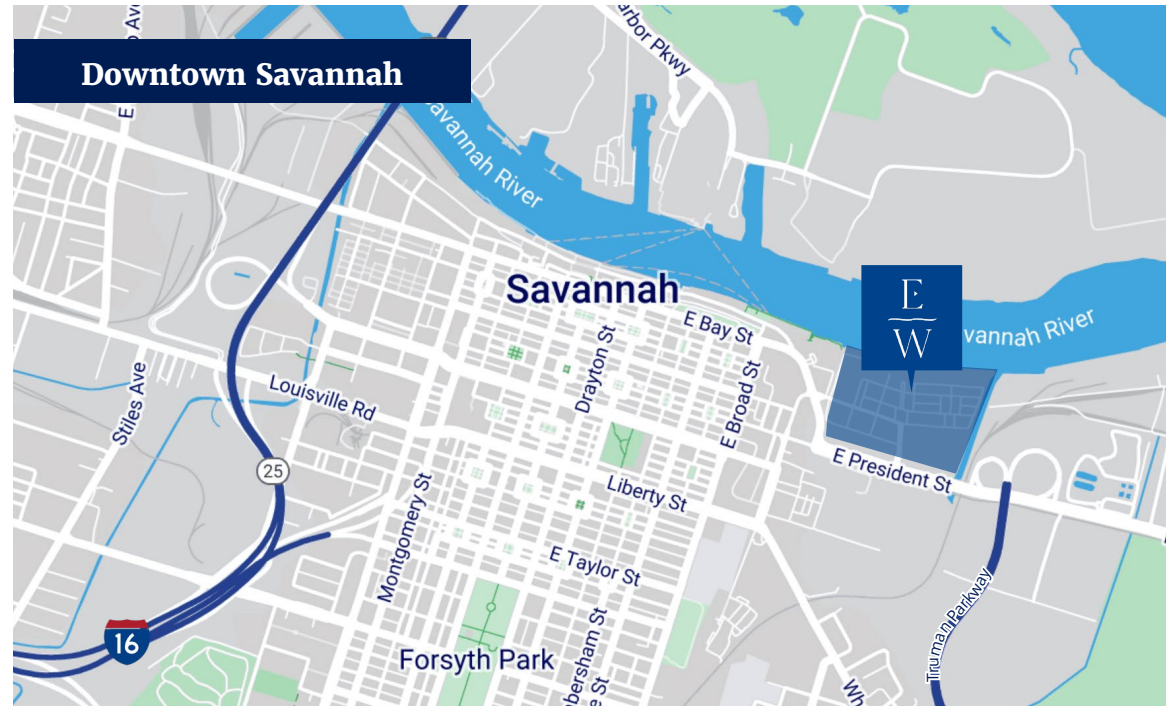
10.5 Miles

20 Minute Drive

SAV/HH Airport

11.4 Miles

25 Minute Drive



AVAILABLE

The Offices

at

EASTERN WHARF

SAVANNAH

Leasing By:

Ashley W. Smith SIOR, CCIM

Principal

+1 912 662 8011

ashley.smith@colliers.com



Developed By:



REGENT
— PARTNERS —

This document has been prepared by Colliers International for advertising and general information only. Colliers International makes no guarantees, representations or warranties of any kind, expressed or implied, regarding the information including, but not limited to, warranties of content, accuracy and reliability. Any interested party should undertake their own inquiries as to the accuracy of the information. Colliers International excludes unequivocally all inferred or implied terms, conditions and warranties arising out of this document and excludes all liability for loss and damages arising there from. This publication is the copyrighted property of Colliers International and/or its licensor(s). ©2025. All rights reserved.