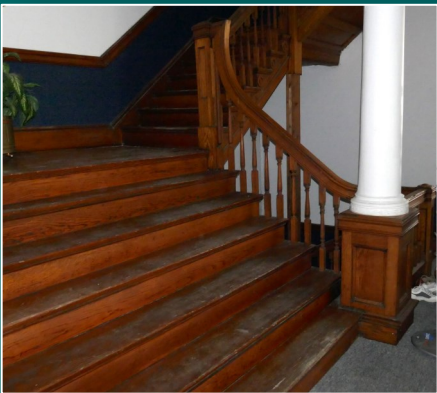


**1601 MAIN STREET  
ELWOOD, IN | 46036-2025**

**\$275,000.00**



This stately historic building is 24,870 sf. Located in the downtown area of Elwood, Indiana, Madison County. Three stories, basement and attached garages. A stage on the 3rd floor, educational rooms, offices, character throughout this building. There could be other uses for this type of commercial building, with possible grants and incentives that might be available for a qualified buyer. This owner has used this for building for storage the last several years. Elwood pg 2.

**Lynn S. Fischer - Broker**

**FISCHER & ASSOCIATES, INC.**

2718 Wyola Ave

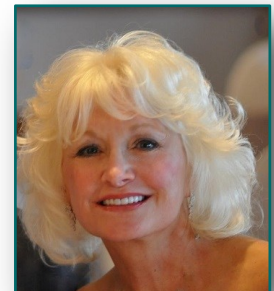
North Port, FL 34286-4990

DIRECT: 317.250.7364

FAX: 866.560.1492

[l.fischer@att.net](mailto:l.fischer@att.net)

[www.FischerandAssociates.biz](http://www.FischerandAssociates.biz)



**38 Years of Experience**

**Now serving  
Indiana & Florida**

**FISCHER**  
& ASSOCIATES  
REAL ESTATE

# ELWOOD, INDIANA

**Elwood**, [city](#), Indiana, Madison county, east-central [Indiana](#), U.S., 35 miles (56 km) northeast of Indianapolis. Established in 1853 as Quincy, it was renamed for the son of one of its founders in 1869 because of the existence of another Quincy in Owen county. Local discovery of [natural gas](#) in 1887 resulted in an economic boom that lasted until 1903. In 1892 Elwood pioneered in the manufacture of tinplate. The city is now an important agricultural (especially tomato) trading centre. Diversified manufactures include canned goods, mobile homes, furniture, and glassware.



**Our Core Values.** **Red Gold** is dedicated to superior quality, outstanding service and operational excellence. The Reichart family impacts all aspects of the company, leading Red Gold's **1,300 employees** to strive toward these principles every day.

Four generations of the Reichart family have been producing the world's freshest, best-tasting tomato products since 1942. When the US entered WWII, the government asked citizens to step up and help the war effort. Red Gold® answered the call by providing canned tomatoes to U.S. troops. Since then, Red Gold has become the largest privately owned tomato processor in the nation with three state-of-the-art facilities in Elwood, Geneva, and Orestes, Indiana. The company also boasts a one million-square-foot distribution center in Alexandria and operates the subsidiary RG Transport trucking fleet in Elwood.

Red Gold partners with local family farms across Indiana, Michigan, and Ohio to sustainably produce premium quality canned tomatoes, ketchup, sauces, salsas, and juices for foodservice, private brands, export, co-pack, and club channels of distribution. The Red Gold family of brands includes Red Gold®, Redpack®, Sacramento®, Tutturosso®, Huy Fong®, Vine-Ripe®, Migliore®, and Teresa®. Superior Quality, Outstanding Service and Operational Excellence are the shared values that contributed to the employee-created mission statement: "To produce the freshest, best tasting tomato products in the world."