

28326-28350 South River Road

9,170 SF Retail Space Available



HARRISON TWP, MI 48045



28326-28350 South River Road

9,170 SF Retail Space Available



CAN BE DEMISED



BUILDING AND PYLON
SIGNAGE



LOCATED AT LIGHTED
INTERSECTION



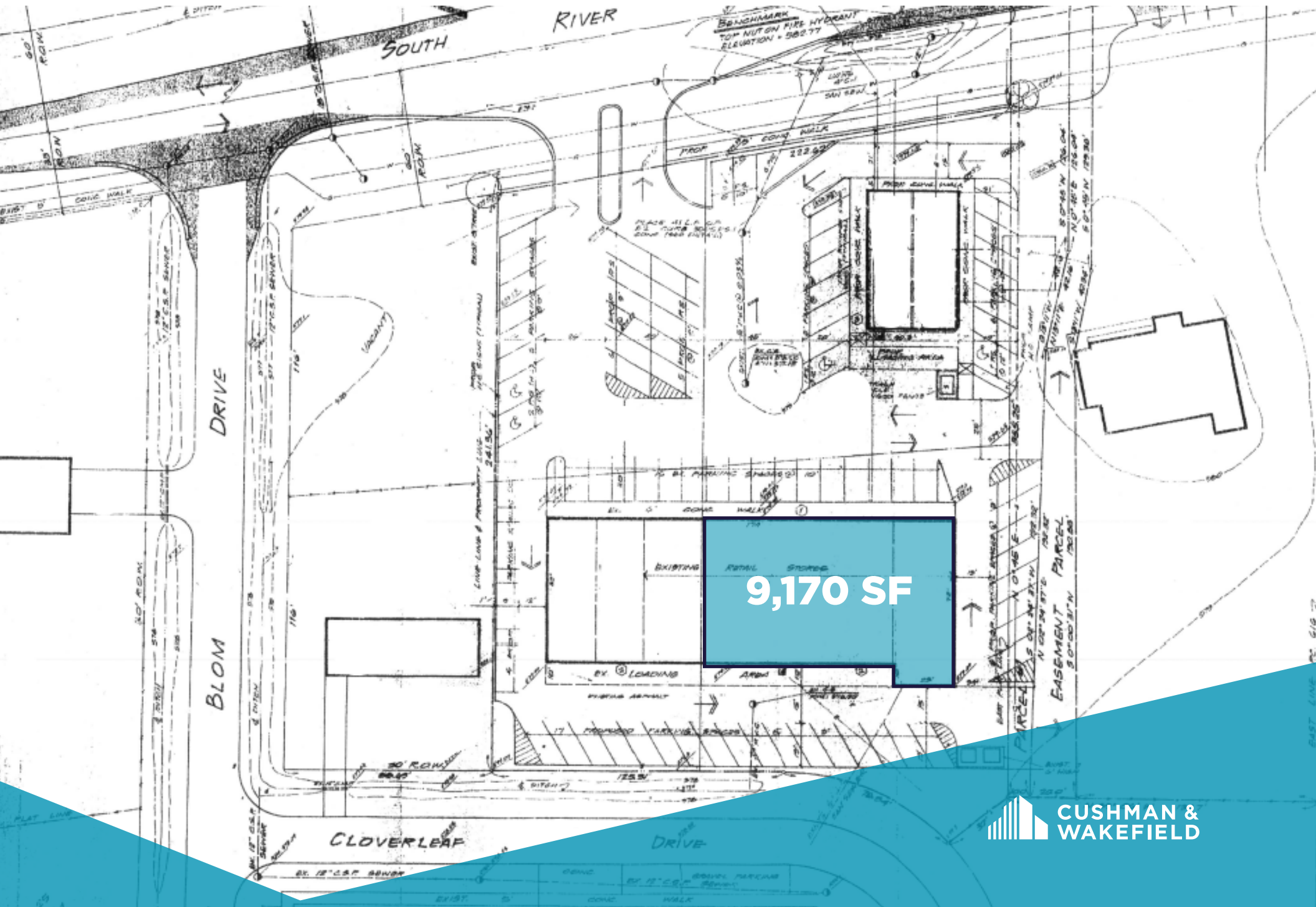
235' OF FRONTAGE ALONG
SOUTH RIVER ROAD



JOIN FARMER'S INSURANCE, CHILI PEPPERS
TANNING, & CARLOS PIZZA



SITE PLAN





LOCATION



7,717
POPULATION
within 1 mile

111,104
POPULATION
within 5 miles



\$104,006
AVG. INCOME
within 1 mile

\$77,783
AVG. INCOME
within 5 miles



\$286,327
AVG. HOME VALUE
within 1 mile

\$191,247
AVG. HOME VALUE
within 5 miles



844
DAYTIME EMPLOYMENT
within 1 mile

159,609
DAYTIME EMPLOYMENT
within 5 miles

28326-28350
South River Road

YOUR SIGN HERE



CONTACT

Albert Ellis

Senior Associate

+1 248 358 6111

albert.ellis@cushwake.com

cushmanwakefield.com



©2024 Cushman & Wakefield. All rights reserved. The information contained in this communication is strictly confidential. This information has been obtained from sources believed to be reliable but has not been verified. NO WARRANTY OR REPRESENTATION, EXPRESS OR IMPLIED, IS MADE AS TO THE CONDITION OF THE PROPERTY (OR PROPERTIES) REFERENCED HEREIN OR AS TO THE ACCURACY OR COMPLETENESS OF THE INFORMATION CONTAINED HEREIN, AND SAME IS SUBMITTED SUBJECT TO ERRORS, OMISSIONS, CHANGE OF PRICE, RENTAL OR OTHER CONDITIONS, WITHDRAWAL WITHOUT NOTICE, AND TO ANY SPECIAL LISTING CONDITIONS IMPOSED BY THE PROPERTY OWNER(S). ANY PROJECTIONS, OPINIONS OR ESTIMATES ARE SUBJECT TO UNCERTAINTY AND DO NOT SIGNIFY CURRENT OR FUTURE PROPERTY PERFORMANCE.