

**Available Now!**

**Base Rent \$16/SF**

**Current NNN: \$5.60/SF**

- 2,014 sf of retail/office space for lease
- Located on Main Street in downtown Pullman, right next to Pine Street Plaza and walking distance to many other downtown businesses
- Average daily traffic of 6,816 vehicles as of 2023
- Less than one mile from WSU campus
- Across the street from a 96-unit apartment building
- One block away from a 23,000 square foot office building
- Located in Pullman's Central Business District
- High pedestrian, bicycle, & bus traffic
- Main St. recently renovated to widen sidewalks and prioritize commerce in the downtown area
- Ideal uses include: general retailers, nail or hair salon, or office use

\*Prohibited uses apply. Contact Kerri Staniszewski for more information.

**VIEW LOCATION**



**SPACE  
FOR LEASE!**

**Bridgeway Centre**

340 E Main St.  
Pullman, WA 99163

**KERRI JO STANISZEWSKI - DIRECTOR OF OPERATIONS**

(509) 334-4700 - Kerrijo@corporatept.com





# PHOTOS

## Bridgeway Centre

340 E Main St.  
Pullman, WA 99163

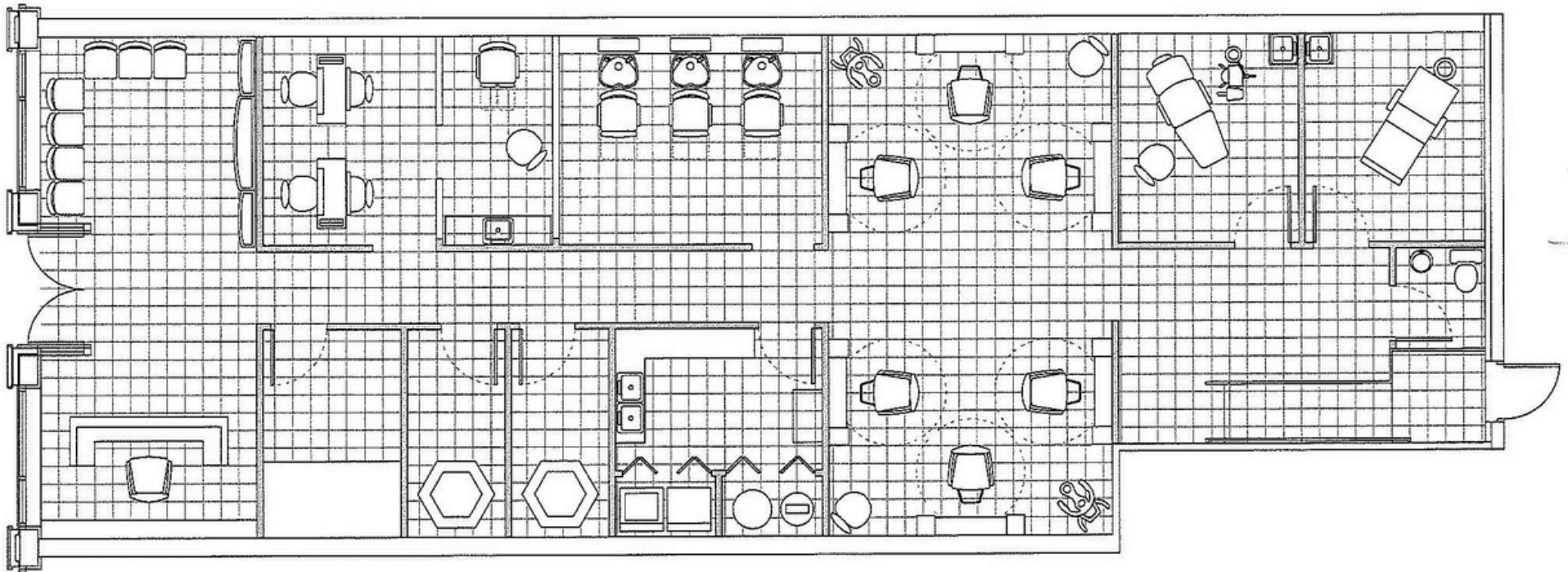




# FLOOR PLAN

## Bridgeway Centre

340 E Main St.  
Pullman, WA 99163







# Bridgeway Centre

340 E Main St.  
Pullman, WA 99163

KERRI JO STANISZEWSKI - DIRECTOR OF OPERATIONS

(509) 334-4700 - [Kerrijo@corporatept.com](mailto:Kerrijo@corporatept.com)

