

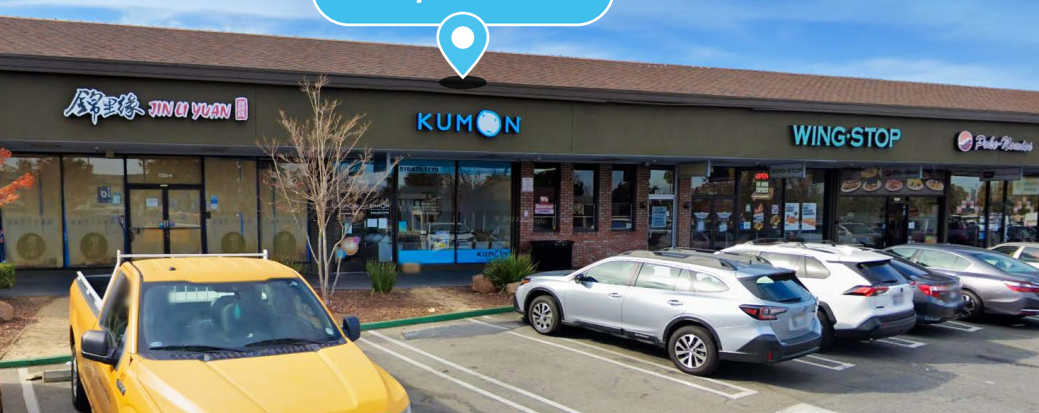
RETAIL FOR LEASE

Shoppes at Homestead

Sunnyvale, CA

OUTDOOR
SUPPLY HARDWARE

±2,040 SF



AVAILABLE

±2,800 SF
WITH DRIVE-THRU



OCCUPIED BUT AVAILABLE (JULY 2025)

SHOPPES AT HOMESTEAD

Highlights



250,000 people within 3 miles with an average income of approximately \$160,000.



Anchored by CVS, Outdoor Supply Hardware and Crunch Fitness.



Good mix of food, financial and health services.



Located in a dense, residential area.

DEMOGRAPHICS

	1 MILE	3 MILES	5 MILES
Population	27,534	209,434	467,250
Daytime Population	23,363	245,820	536,998
Avg. Household Income	\$192,926	\$195,112	\$183,887

TRAFFIC COUNTS

Homestead Road	41,150 VPD
San Tomas Expressway	41,150 VPD

Source: 2022 Esri.



±2,800 SF W/ DRIVE THRU (AVAILABLE JULY 2025)



SPACE	TENANT	SF
1657	NEW CONCEPT ACADEMY	3,568
1603	PURE WATER HEALTH STORE	1,000
1605	FRED'S WATCH REPAIR	1,000
1607	MEE'S CLEANERS	1,000
1623	OPTIVISION	1,064
1627	PHO SPOT	1,807
1629B	GLAMOROUS NAILS	882
1631	SAVOIR FAIRE	1,469
1633	THE CHIROPRACTIC WAY	1,298
1635	BIKANER SWEETS	2,756
1637	NAMASTE PLAZA	4,480
1639	GENTLE DENTAL	3,885

SPACE	TENANT	SF
1639B	ROSE CART SUNNYVALE (STORAGE)	1,317
1641	GONG CHA USA	1,225
1645	AARNA THREADING SALON	1,272
1647	BAY SUSHI	1,272
1651	CRUNCH FITNESS	21,378
1653	NOODLE PLUS MONGOLIAN BBQ	2,265
1659	AMERICAN CANCER SOCIETY	2,183
1661	MALATANG	1,800
1661B	WINGSTOP	1,385
1663	TANDOORI PIZZA	2,530
1665	AVAILABLE	2,040
1669A	JIN LI YUAN	3,000

SPACE	TENANT	SF
1669B	THE UPS STORE	1,005
1671	SUPER BURRITO	1,400
1673	TAE KWON DO	2,272
1675	CVS	36,876
1677	BENTO EXPRESS	827
1679	ROSE CART OF SUNNYVALE	805
1681	HOUSE OF BAGELS	1,247
1683	TOGO'S	1,247
1685	NICK THE GREEK	1,754
1695	KFC/TACO BELL (AVAILABLE JULY 2025)	2,800
NAP	ORCHARD SUPPLY HARDWARE	0





Shoppes at Homestead

Sunnyvale, CA

OUTDOOR
SUPPLY HARDWARE

STOP

JAMES CHUNG Founder & Principal | jchung@theeconiccompany.com | (408) 400-7017 | LIC. 01408190

NICOLE LYON Senior Director | nlyon@theeconiccompany.com | (408) 400-7008 | LIC. 01975898

MIKE CONROY Executive Director | mconroy@theeconiccompany.com | (408) 400-7061 | LIC. 02046912

MARISA DELGADO Director, Transactions & Marketing | mdelgado@theeconiccompany.com | (408) 400-7014 | LIC. 01917354