

1.58 Acre Parcel Available Northeast Corner of SR 37 & W. Main Street, Mitchell IN



PROPERTY HIGHLIGHTS

- Prime corner location at **SR 37 and West Main Street**
- **1.58-acre** parcel offering excellent access and visibility from SR 37
- **14,361 vehicles per day** on SR 37
- **Spring Mill State Park** attracts over **675,000 visitors annually**
- Ideal site for **Quick-Service Restaurant (QSR), bank, general retail, or medical use**
- **Utilities available** to the site
- Adjacent to the **new Taco Bell** (opened November 2025)



Drew Warner
+317-523-1081
dwarner@warnerretail.com



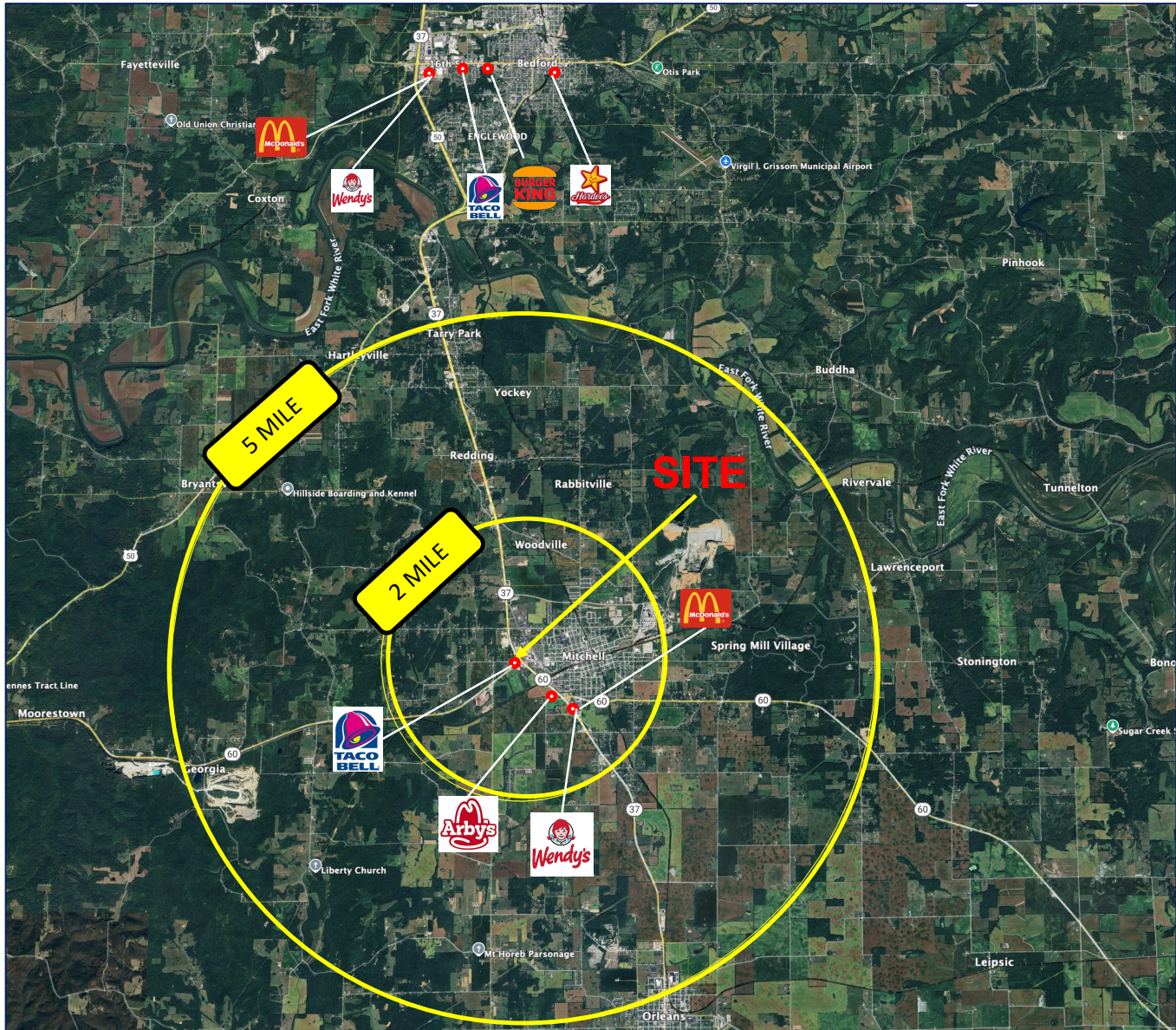
1.58 Acre Parcel Available
Northeast Corner of SR 37 & W. Main Street, Mitchell IN



Drew Warner
+317-523-1081
dwarn@warnerretail.com



1.58 Acre Parcel Available Northeast Corner of SR 37 & W. Main Street, Mitchell IN



SR 37 & W Main Street, Mitchell, IN
Latitude, Longitude: 38.732499, -86.490448

Demographics - Mitchell, IN

| | 1 Miles | 2 Miles | 5 Miles |
|-------------------------|----------|----------|----------|
| Population | 1,804 | 4,868 | 8,880 |
| Daytime Population | 2,574 | 4,168 | 6,548 |
| Median Household Income | \$53,314 | \$51,278 | \$56,149 |

Drew Warner
+317-523-1081
dwarn@warnerretail.com

