

LEASE

Allisonville Professional Turnkey Medical Office

10412 ALLISONVILLE ROAD

Fishers, IN 46038

PRESENTED BY:

JESS LAWHEAD, CCIM

O: 317.447.4403

jess.lawhead@svn.com

IN #RB14047741

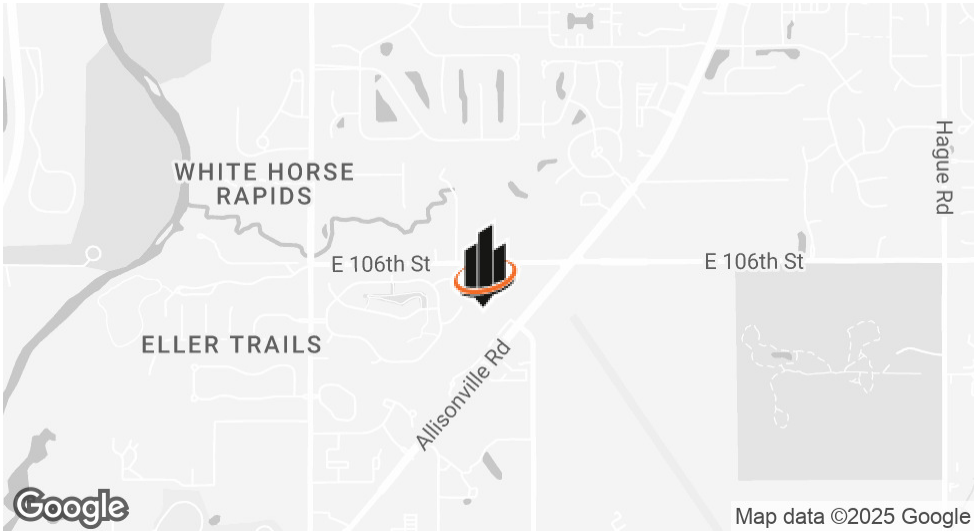
PROPERTY SUMMARY



OFFERING SUMMARY

LEASE RATE:	\$25.00 SF/yr (NNN)
AVAILABLE SF:	764 SF
LOT SIZE:	0.53 Acres
BUILDING SIZE:	51,948 SF

JESS LAWHEAD, CCIM
O: 317.447.4403
jess.lawhead@svn.com
IN #RB14047741

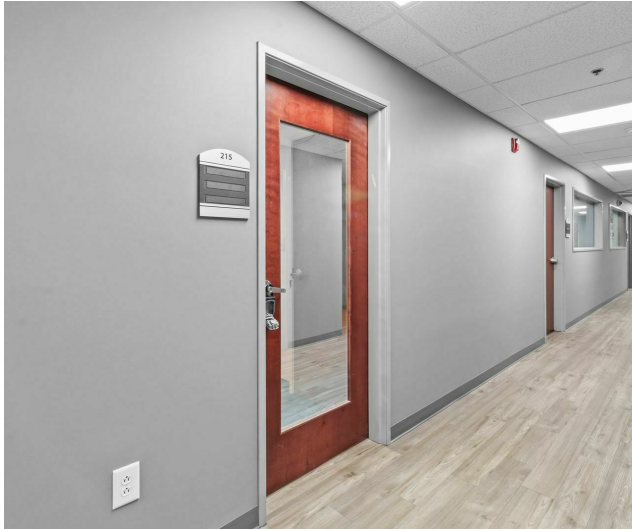


PROPERTY DESCRIPTION

SVN | Northern Commercial is pleased to present Suite 215, a 764 RSF turnkey medical office suite. The space features a reception area with built-in desk, a private office, an exam/lab-support room with sink, and exam rooms with medical-grade finishes, ready for immediate occupancy. The suite is well-suited for medical or professional use and is located within a professionally managed building.

PROPERTY HIGHLIGHTS

- Fully equipped exam room and lab/support room with sink
- Private provider office
- Reception area with built-in reception desk
- Dedicated on-site parking for tenants and patients
- Professionally managed building



JESS LAWHEAD, CCIM

O: 317.447.4403

jess.lawhead@svn.com

IN #RB14047741

ADDITIONAL PHOTOS

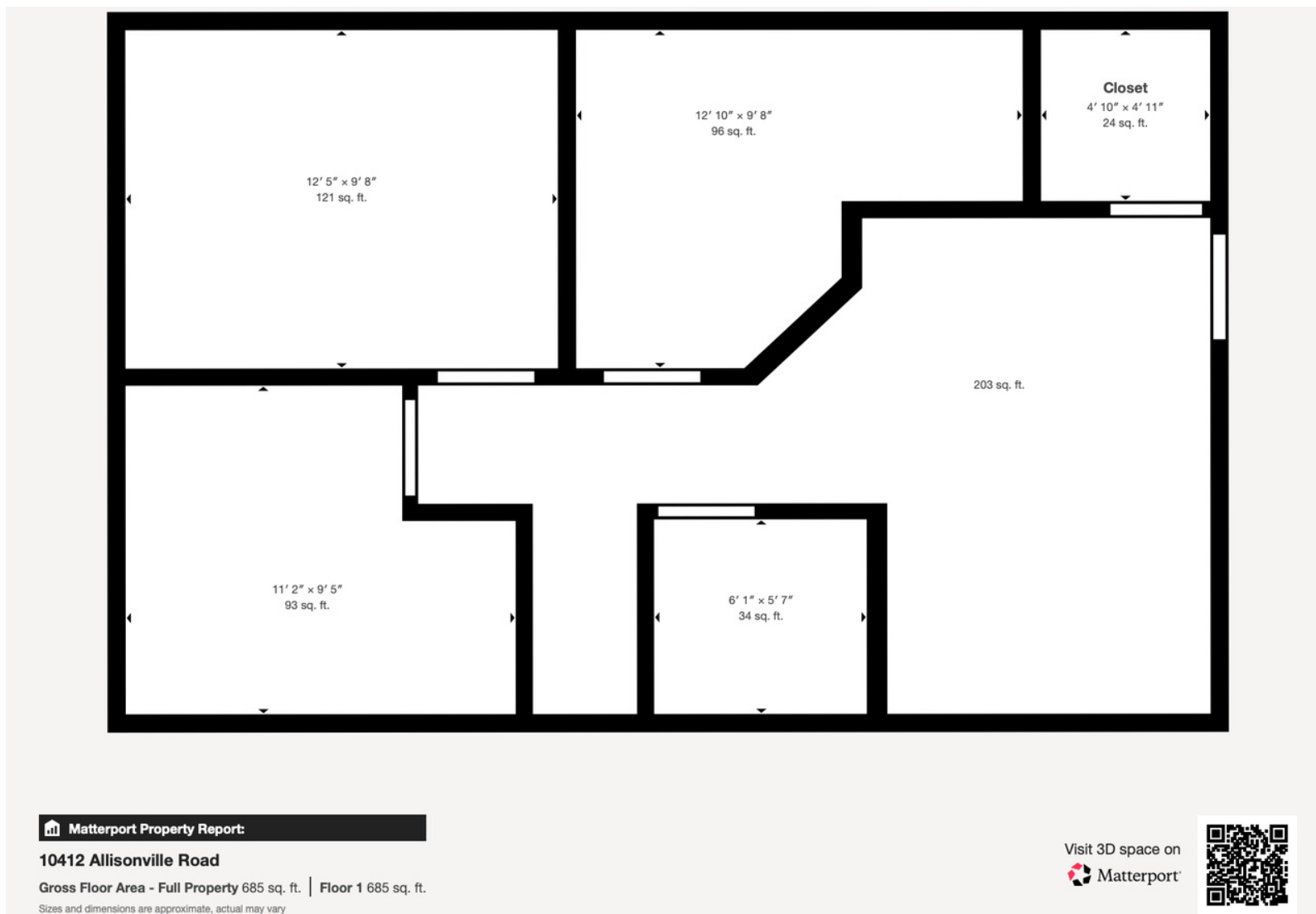


JESS LAWHEAD, CCIM

O: 317.447.4403

jess.lawhead@svn.com

IN #RB14047741



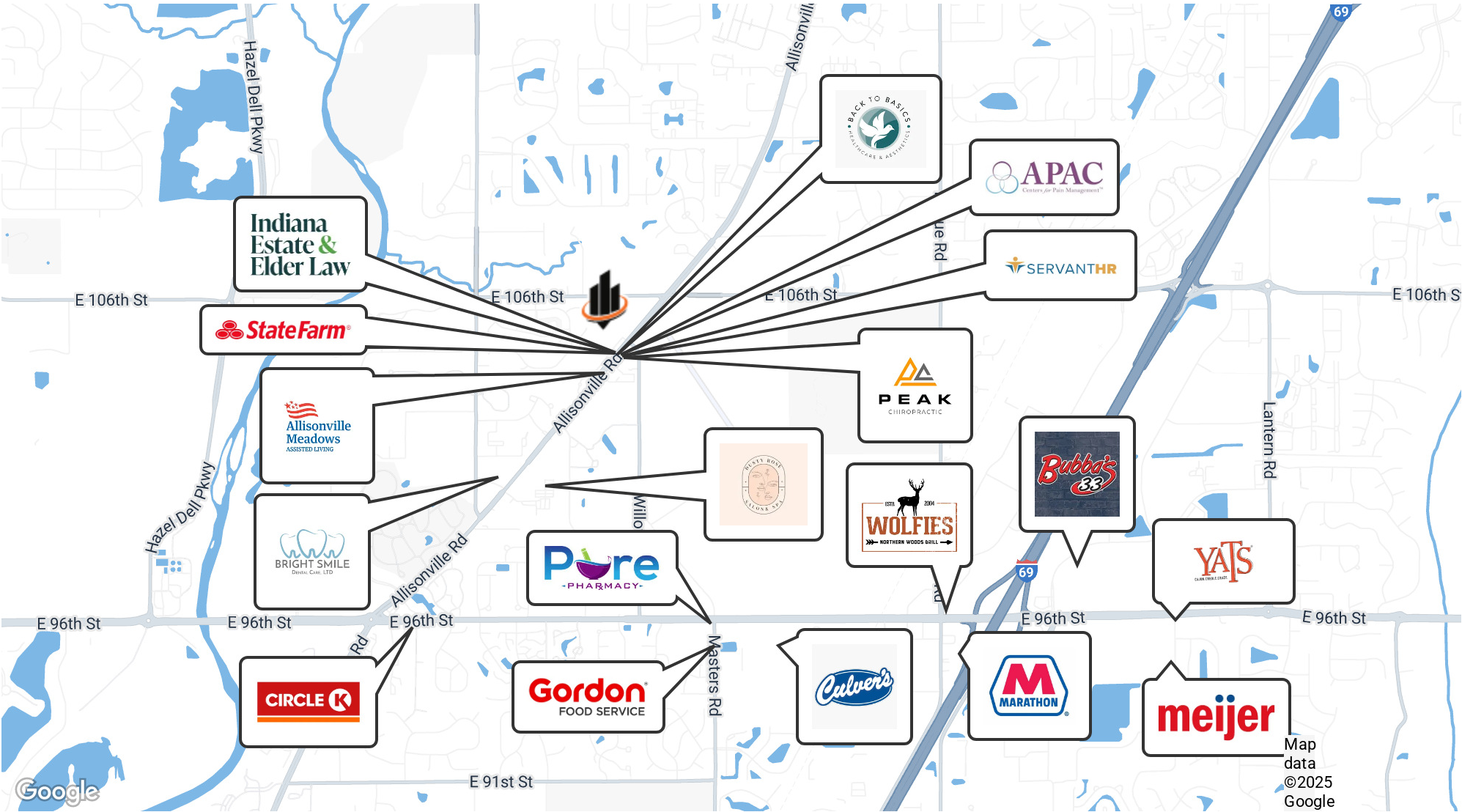
JESS LAWHEAD, CCIM

O: 317.447.4403

jess.lawhead@svn.com

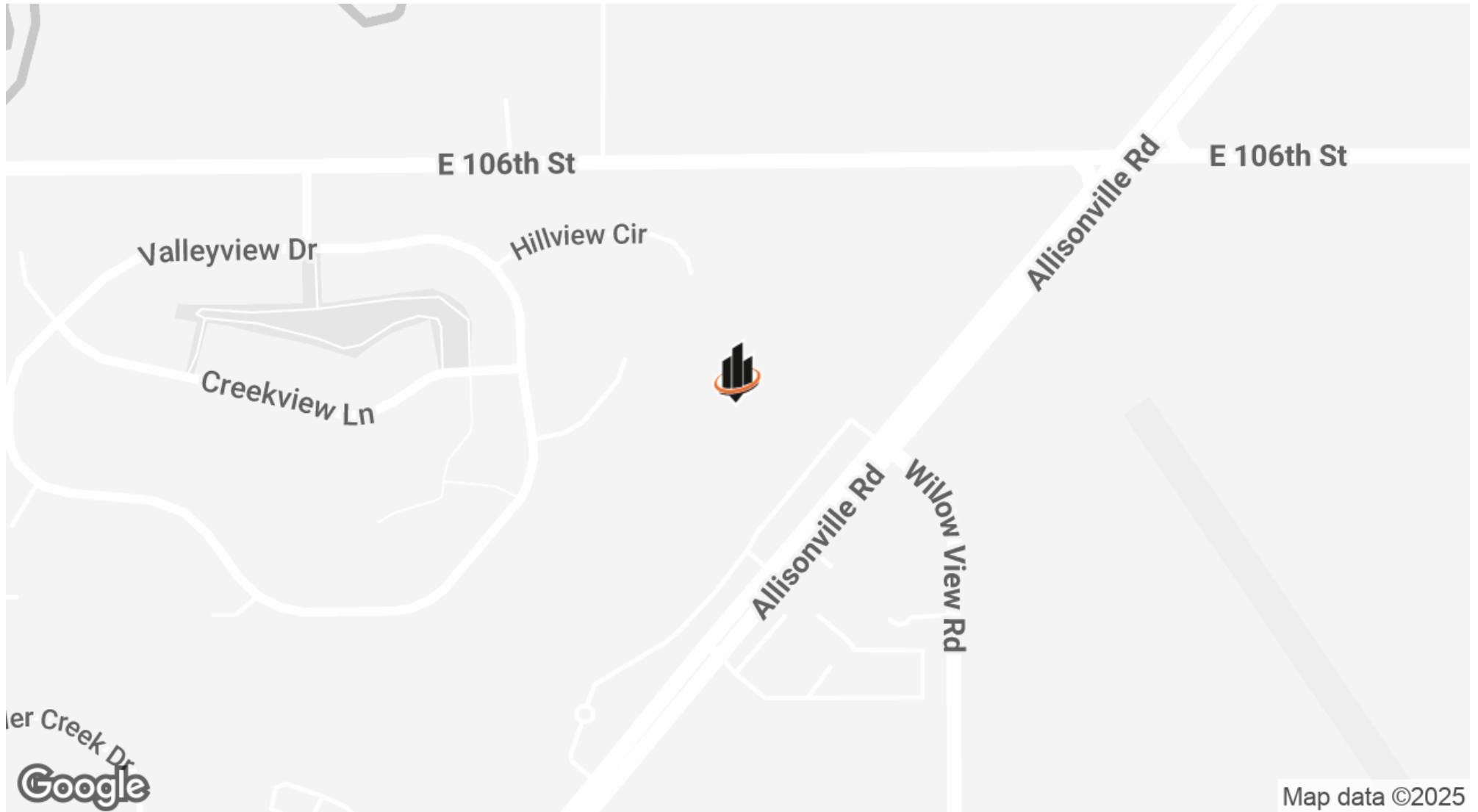
IN #RB14047741

RETAILER MAP



JESS LAWHEAD, CCIM
O: 317.447.4403
jess.lawhead@svn.com
IN #RB14047741

LOCATION MAP



JESS LAWHEAD, CCIM

O: 317.447.4403

jess.lawhead@svn.com

IN #RB14047741