

New Jersey's Capital City

240 W. State Street, Trenton, NJ



19,370 SF of Retail Space Available for Lease – Gym Wanted!

Craig Parcels

Senior Vice President
+1 201 618 7223
craig.parcels@jll.com

David Townes

Managing Director
+1 917 993 5515
david.townes@jll.com

Alana Friedman

Vice President
+1 201 741 0990
alana.friedman@jll.com



Property Location

- » Located Across the street from the NJ State Museum and 1.5 blocks from the State House
- » 1.5 miles from Trenton Transit Center Commuter Rail NJ Transit Northeast Corridor Line, River Line
- » Trenton Mercer Airport – 12-minute drive
- » Located in the heart of New Jersey state governmental facilities, providing a high day time population (162,564)
- » [Matterport View](#)

Retail Availability

- » 19,370 SF for lease, divisions considered
- » Located at the base of a 240,000 SF 16-story office building
- » 192 covered car parking deck on-site
- » 12' ceilings throughout

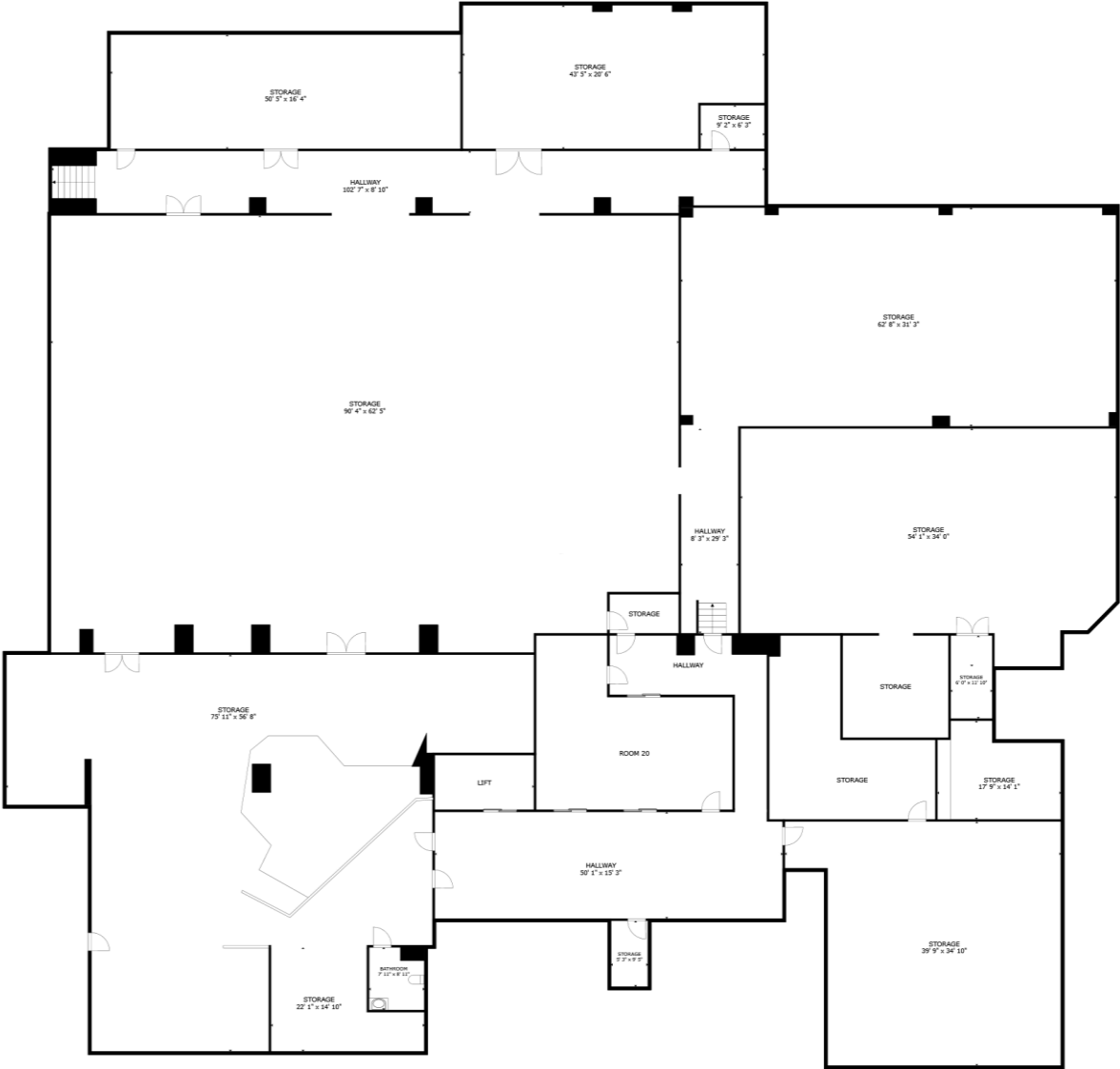
Asking rent

- » Upon request

Trade Area Businesses



Floor Plan



FLOOR PLAN

GROSS INTERNAL AREA
FLOOR PLAN 19,370 sq.ft.
TOTAL : 19,370 sq.ft.

SIZES AND DIMENSIONS ARE APPROXIMATE, ACTUAL MAY VARY.

Market Aerial



Demographics



152,452
Population



\$58,339
Med. HH Income



81,973
Employees



5,929
Businesses

For more information contact:

Craig Parcels
Senior Vice President
+1 201 618 7223
craig.parcels@jll.com

David Townes
Managing Director
+1 917 993 5515
david.townes@jll.com

Alana Friedman
Vice President
+1 201 741 0990
alana.friedman@jll.com

Demographics taken within 3 miles Source: ESRI, 2023