

PORT 106 INDUSTRIAL CENTER

4746 Ohio Ave S

Seattle, WA 98134

6,040 - 14,457 Square Feet Available

FOR LEASE



TOTAL COMPLEX

282,500 SF

AVAILABLE SF

6,040-14,457 SF

CEILING HEIGHT

High Ceilings

LOADING

Truck Docks + Ramps

EXCLUSIVELY MARKETED BY:

Darrell Sanders

(206) 910-5213 | Darrells@americanlifeinc.com

Kenneth Clark

(206) 971-7824 | Ken.Clark@americanlifeinc.com

Eric Haber

(206) 940-7525 | Eric.Haber@americanlifeinc.com



Port 106 Industrial Center is a fully renovated 282,500 SF light industrial complex strategically located just south of Downtown Seattle in the Industrial District. Originally built in 1943 and extensively upgraded in 2008, the property features modern infrastructure, abundant loading options, and flexible layouts designed to meet a variety of industrial and manufacturing needs.

KEY HIGHLIGHTS

Multiple truck-height docks + drive-up ramps
3-phase electrical | Ample parking on-site
High ceilings throughout
Minutes from I-5, Highway 99, Port of Seattle
Flexible layouts | Modern infrastructure
Renovated 2008 | Built 1943



SPACE AVAILABILITIES

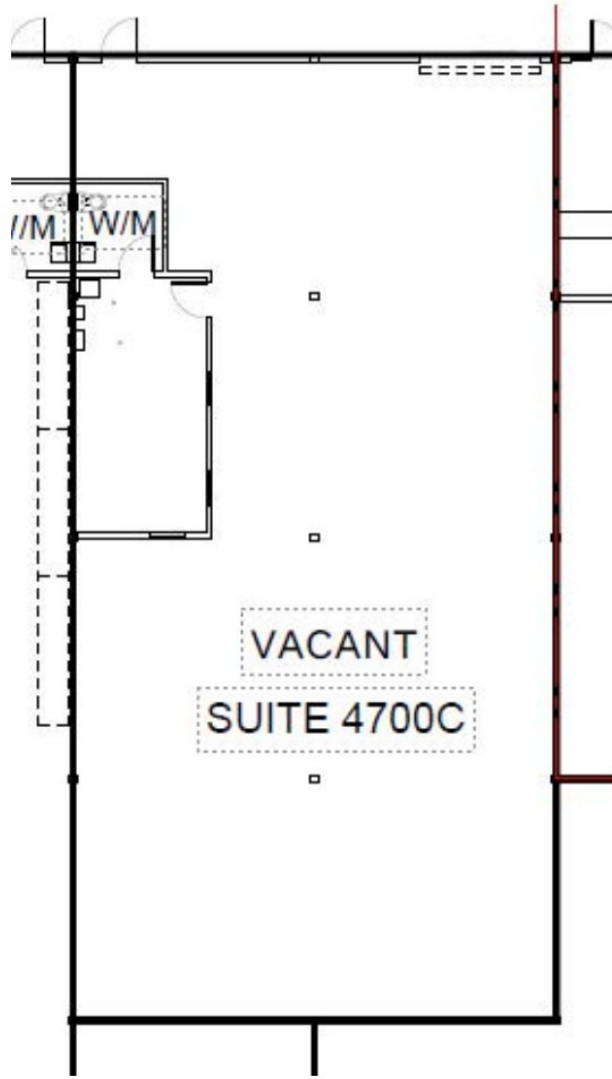
SUITE	SF	AVAIL.	NOTES
4731	6,040	Pending	Two offices, Restroom, Truck Height Dock, Roll Door
4750	6,040	Now	Flexible Layout, Truck Dock, Upgraded Electrical
4770B	14,457	LEASED	Designer Office, Conference Rm, Kitchenettes
4700C	3,206	5/1/2026	Small Footprint, Truck Height, Roll Door Access
4700D	5,611	3/1/2026	Small Footprint, Truck Height, Roll Door Access

INTERIOR PHOTOS



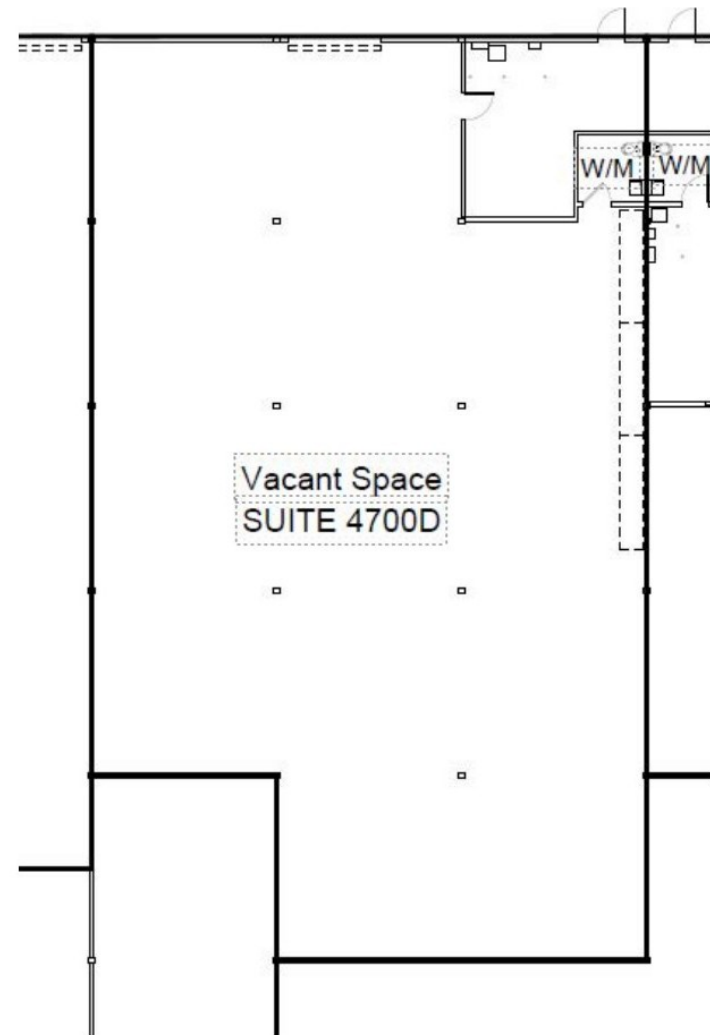
Suite 4700C | 3,206 SF | Available 5/1/2026

Suite 4700C

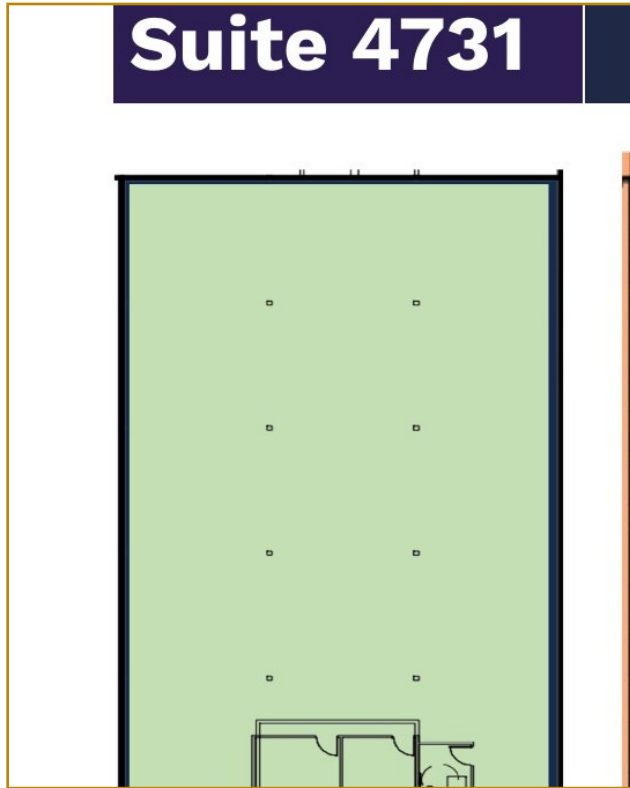


Suite 4700D | 5,611 SF | Available 3/1/2026

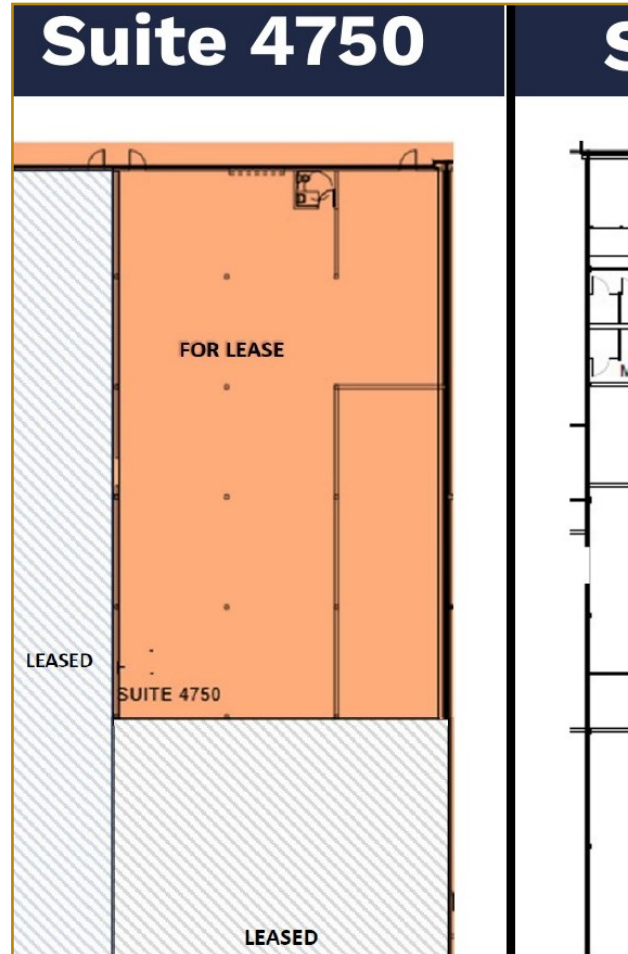
Suite 4700D



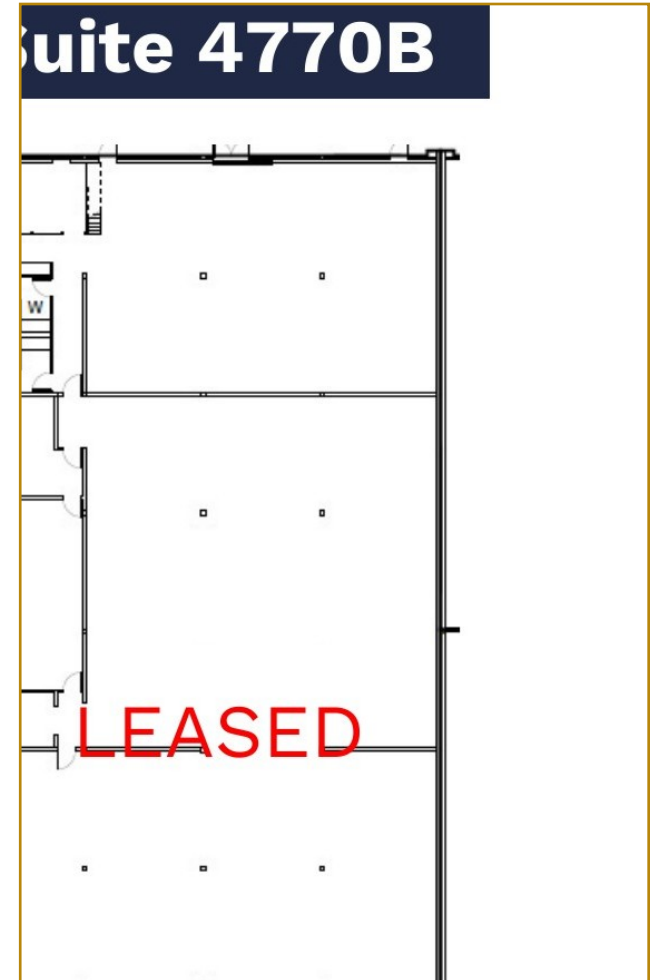
Suite 4731 | 6,040 SF | Pending



Suite 4750 | 6,040 SF | Now



Suite 4770B | 14,457 SF | LEASED





EXCLUSIVELY MARKETING BY

Darrell Sanders

(206) 910-5213 | Darrells@americanlifeinc.com

Kenneth Clark

(206) 971-7824 | Ken.Clark@americanlifeinc.com

Eric Haber

(206) 940-7525 | Eric.Haber@americanlifeinc.com