

Villa Capri Shopping Center

2053 22nd Ave

Kenosha, WI 53140

**BERKSHIRE
HATHAWAY**
HomeServices

Epic
Real Estate

COMMERCIAL DIVISION

AVAILABLE

SPACE AVAILABLE: 10,010 SF. FT.

Devisable: 6,518 / 3,490

Lease Rate: \$14.00

NNN: \$4.20

Year built: 1964

Land Area: 2.07 acres

Zoned: B-2

Parking Spaces 152

Highlights

- Stable National Tenants
- Excellent Visibility & Access

TENANTS

- **Auto Zone**
- **Family Dollar**



Anthony J. DeBartolo, CCIM

President/Co-Owner

Direct 262-605-1504

Cell: 262-818-8669

Email: tony@epicmidwest.com

600 52nd Street, Ste 333

Kenosha, WI 53140

www.epicmidwest.com

Villa Capri Shopping Center

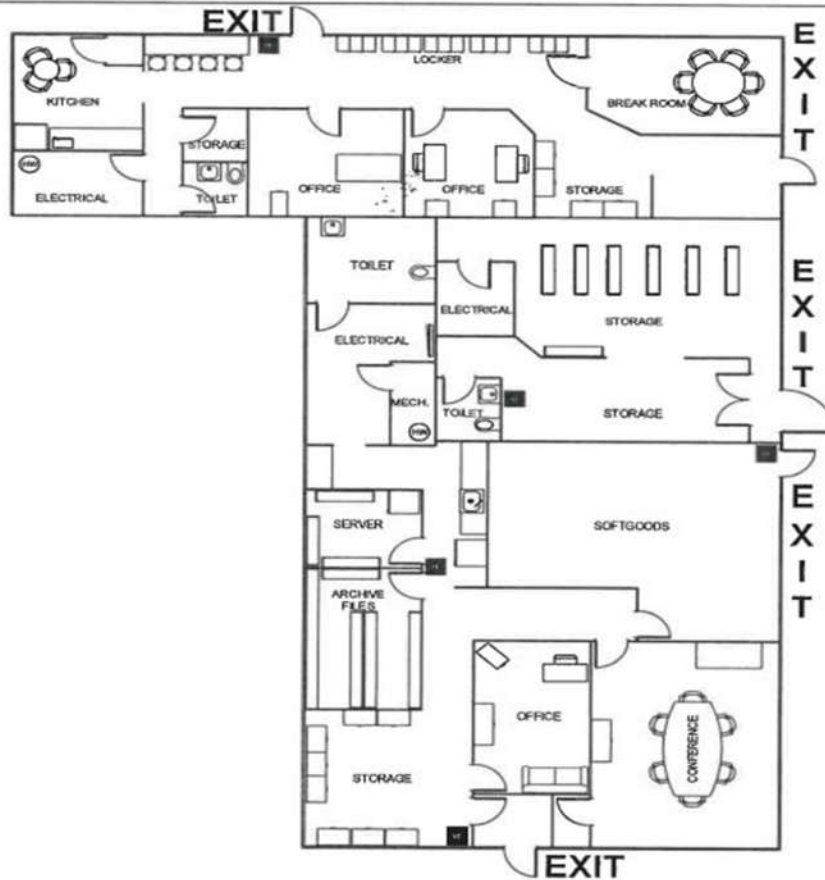
2027-2055 22nd Ave

Kenosha, WI 53140

**BERKSHIRE
HATHAWAY**
HomeServices

Epic
Real Estate

COMMERCIAL DIVISION



3,490 sq. ft.

Anthony J. DeBartolo, CCIM

President/Co-Owner

Direct 262-605-1504

Cell: 262-818-8669

Email: tony@epicmidwest.com

600 52nd Street, Ste 333

Kenosha, WI 53140

www.epicmidwest.com

Villa Capri Shopping Center

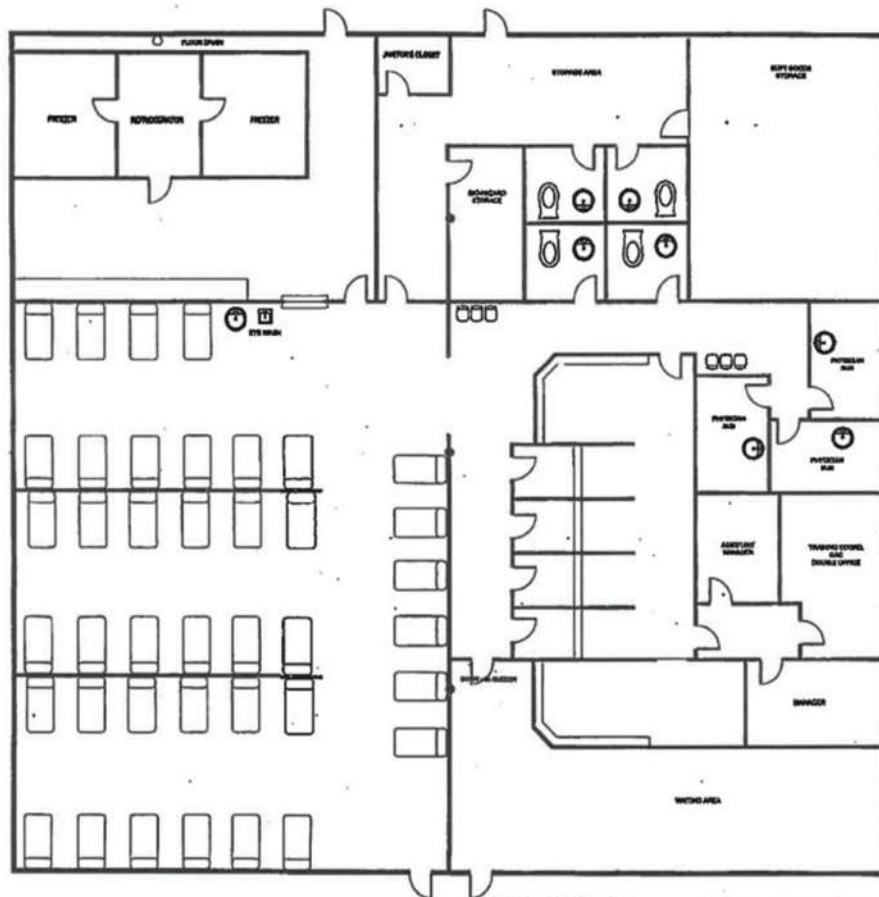
2027-2055 22nd Ave

Kenosha, WI 53140

**BERKSHIRE
HATHAWAY**
HomeServices

Epic
Real Estate

COMMERCIAL DIVISION



INTERSTATE BLOOD & PLASMA
2051/2053 22nd Avenue
Kenosha, WI

6,518 sq. ft.

Anthony J. DeBartolo, CCIM

President/Co-Owner

Direct 262-605-1504

Cell: 262-818-8669

Email: tony@epicmidwest.com

600 52nd Street, Ste 333

Kenosha, WI 53140

www.epicmidwest.com

Villa Capri Shopping Center

2053 22nd Ave

Kenosha, WI 53140

**BERKSHIRE
HATHAWAY**
HomeServices

Epic
Real Estate

COMMERCIAL DIVISION



Anthony J. DeBartolo, CCIM

President/Co-Owner

Direct 262-605-1504

Cell: 262-818-8669

Email: tony@epicmidwest.com

600 52nd Street, Ste 333

Kenosha, WI 53140

www.epicmidwest.com