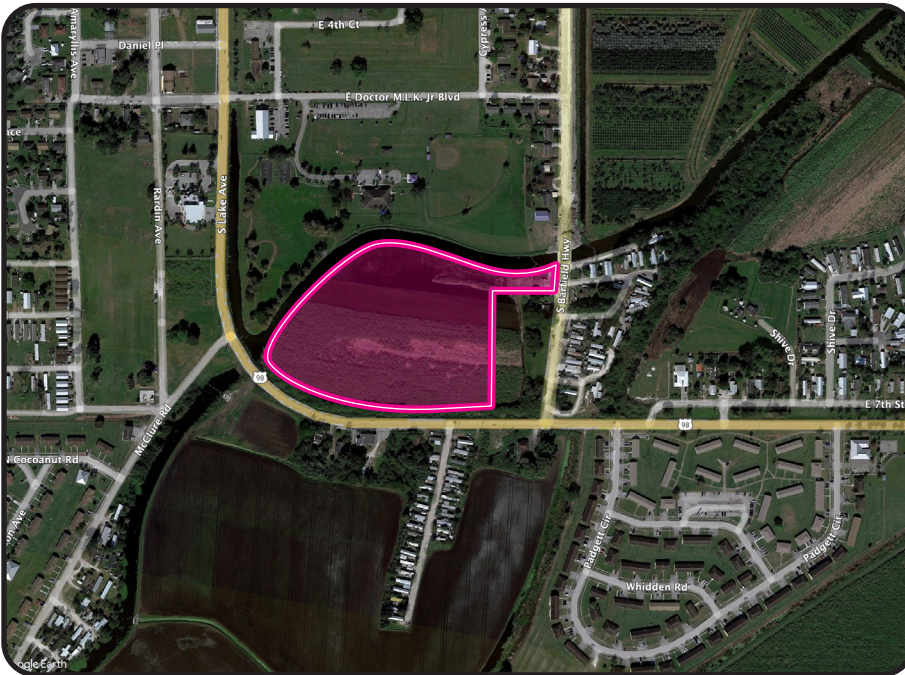
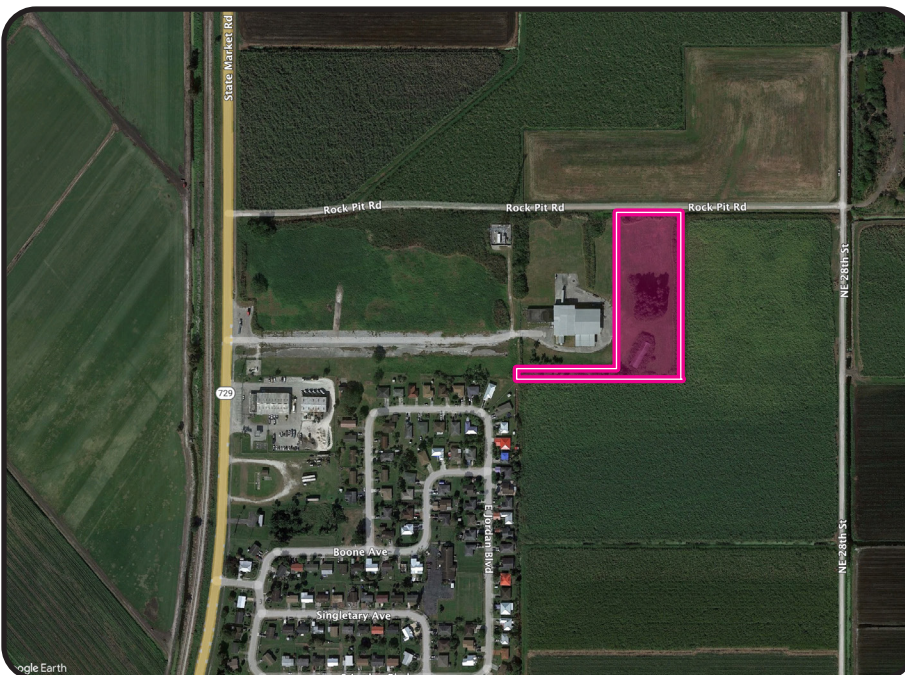


# Four Property Estate Sale



## S Barfield Highway Pahokee, Palm Beach County, Florida

- Parcel 48-37-42-18-18-066-0020
- 8.93 Acres
- Property Use:  
**AG Classification**
- Zoning:  
**MF-12 Multifamily  
Low Density**
- Price: \$480,000



## 630 Farmers Market Road Pahokee, Palm Beach County, Florida

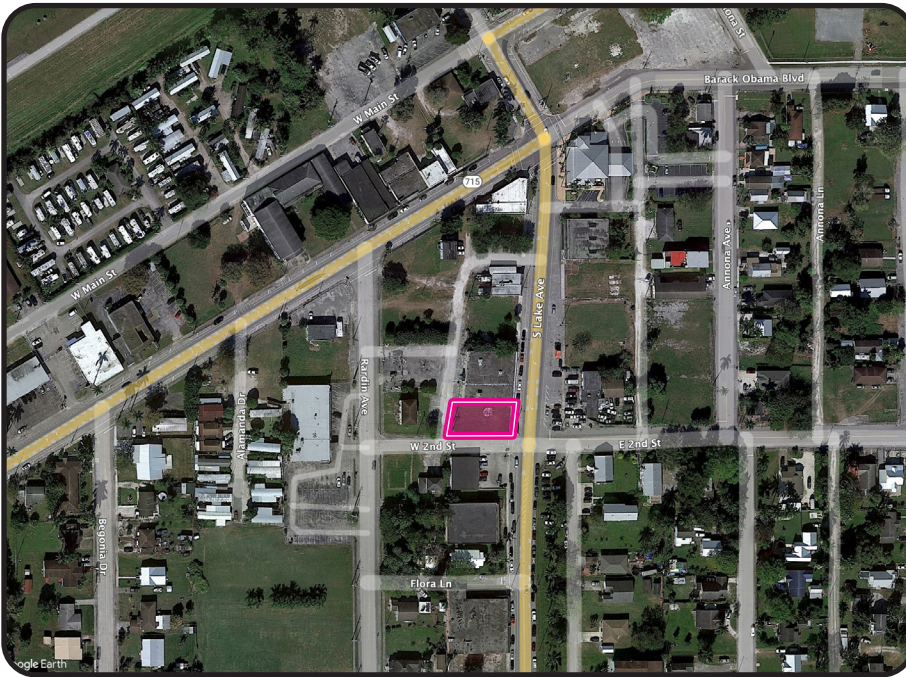
- Parcel 48-37-42-09-01-000-0101
- 4.62 Acres of land
- 3,132 sf office building
- Property Use:  
**Office Building - non-medical  
1-3 stories**
- Zoning:  
**Heavy Industrial**
- Price: \$300,000

avisonyoung.com

©2023 Avison Young. All rights reserved. E&OE: The information contained herein was obtained from sources which we deem reliable and, while thought to be correct, is not guaranteed by Avison Young.

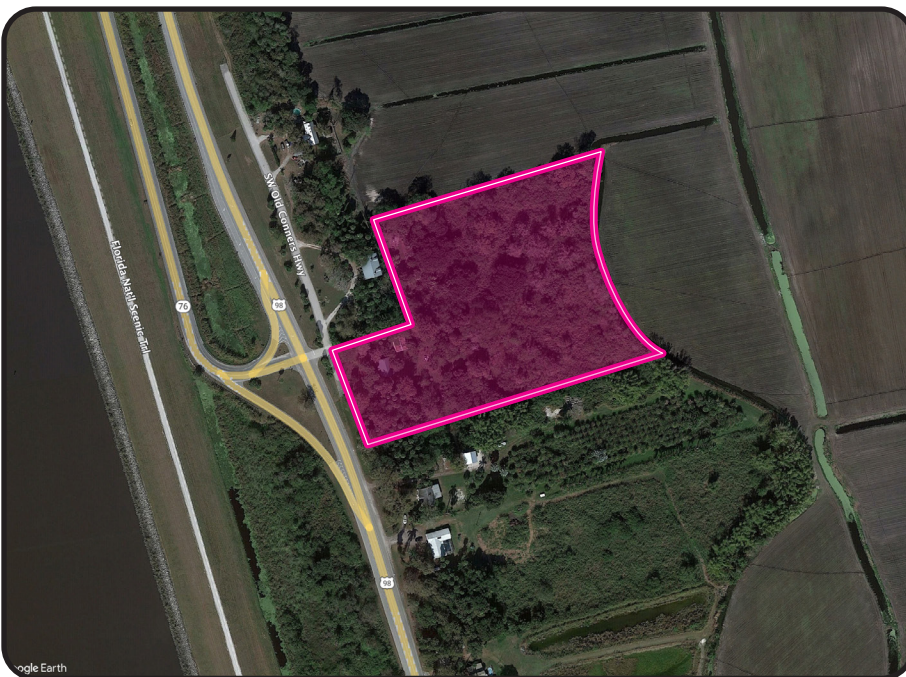
**AVISON  
YOUNG**





## 197 S. Lake Avenue Pahokee, Palm Beach County Florida

- Parcel 48-37-42-18-18-005-0020
- 0.1223 Acres of land
- Property Use:  
**Vacant Commercial**
- Zoning:  
**Core - Commercial  
Office  
Restaurant  
Entertainment**
- Price: \$35,000



## 18761 S Connors Highway, Canal Point, Martin County, Florida

- Parcel 22-40-37-001-000-00021-0
- 6.88 Acres
- 1,656 sf building
- Property Use:  
**Single Family**
- Price: \$350,000

[avisonyoung.com](http://avisonyoung.com)

©2023 Avison Young. All rights reserved. E&OE: The information contained herein was obtained from sources which we deem reliable and, while thought to be correct, is not guaranteed by Avison Young.

**AVISON  
YOUNG**