



**Location**

- One in-line spaces on the corner of Noble Blvd. and South Hanover available
- Best visibility in the center!
- Quickest and easiest location in center to access
- Seconds from the highway

**Center**

- 387,383 SF power center anchored by extremely productive Super Walmart!
- Join T.J. Maxx, Staples, RC Theatres, Tractor Supply, Panera, Chipotle, Subway, Five Guys, Chick-fil-A and more!
- Solid tenant mix, easy access and excellent roadside visibility
- Located off of US-81W, just west of Harrisburg, PA
- Vacancies can be built-to-suit

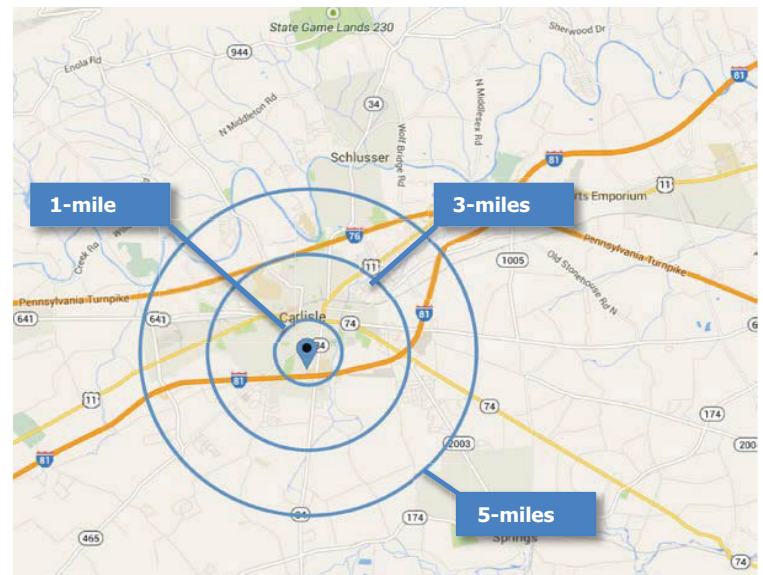
**NOW LEASING:**

3,738 SF - 6,000 SF Available

**Demographics**  
 (2020 Estimates)

	1-mile radius	3-mile radius	5-mile radius
Population	9,821	32,901	53,117
Average HH Income	\$65,524	\$63,245	\$69,298

**WATCH PROPERTY VIDEO**





Suite	Tenant	SF
1	Metro Bank	3,750
2A	Five Guys	2,500
2B	Invisalign	3,325
2C	Sports Clips	1,389
2D	Sprint	2,500
2E	Firehouse Subs	1,800
3	Panera Bread	5,200
4	Vitality Organics	2,633
5	Mariner Finance	2,567
6	Al's Pizza & Subs	2,200
7	Chipotle	3,850
8	N&P Nails and Spa	2,750
9	Goodall Pools	3,813
10	Super Buffet	7,635
11	Mattress Warehouse	5,070
12A	Career Link	4,244
<b>12B</b>	<b>Available</b>	<b>3,738</b>
13	AT & T Wireless	1,747
14	Regis Hairstylists	1,206
15	Subway	1,206
16	MyEyeDr.	1,206
17	US Army Corp of Engineers	1,206
18	GameStop	1,206
19	Walmart	205,305
20A	Staples	18,000
<b>10A</b>	<b>Available</b>	<b>6,000</b>
21	TJ Maxx	30,729
22	Tractor Supply Co.	29,769
23	Applebee's	6,572
24	RC Theatres	21,000
25	Chick Fil A	4,874



62,000 AADT on I-81



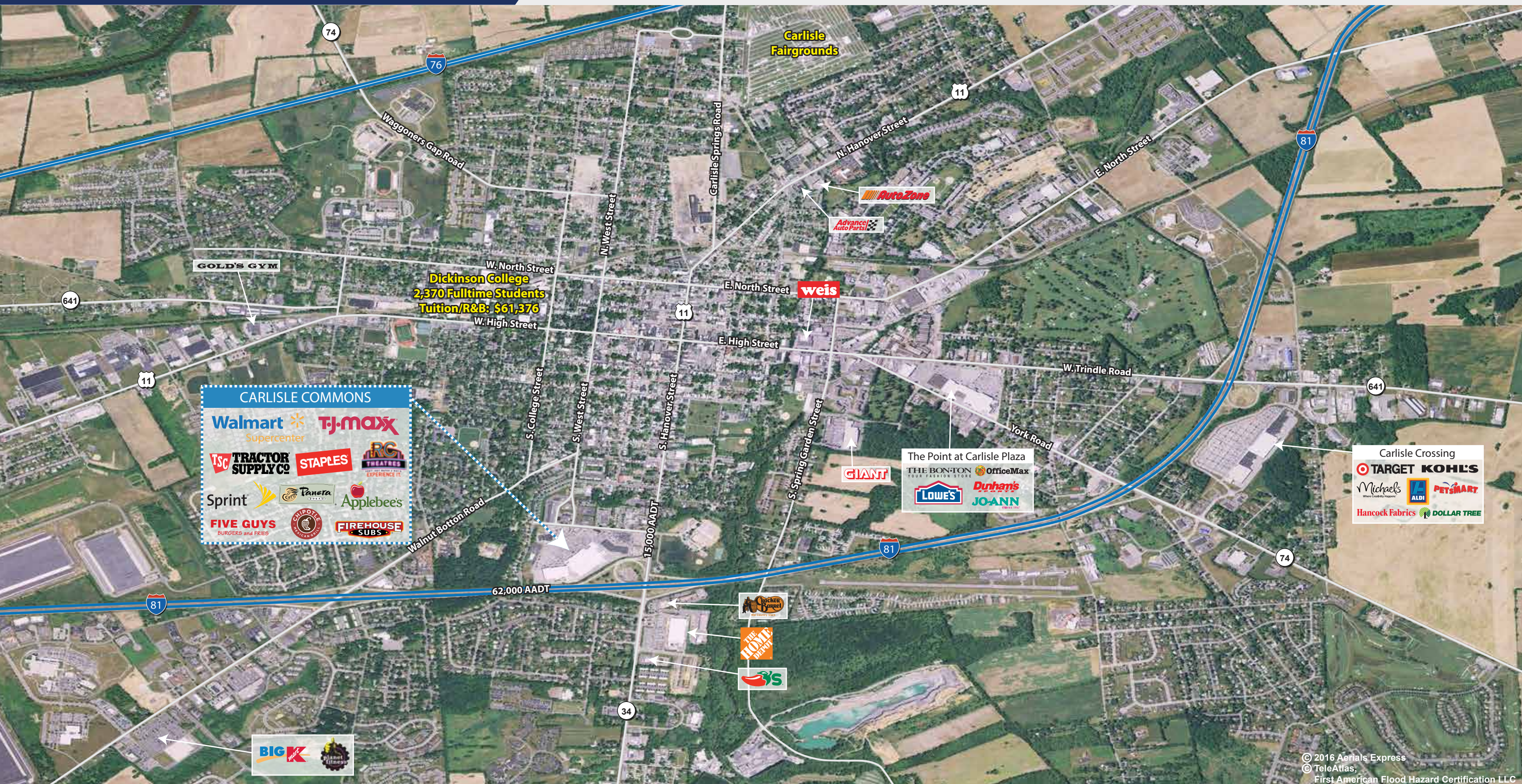
Disclaimer: While Broad Reach Retail Partners, LLC and its affiliates believe the information contained herein to be true and accurate, they make no claims or warranties. Any prospective tenant should conduct thorough, independent due diligence.

For leasing information, please contact:

Kimberly Todd

ktodd@broadreachretail.com | 443.225.4479

[www.broadreachretail.com](http://www.broadreachretail.com)



© 2016 Aerials Express  
 © TeleAtlas,  
 First American Flood Hazard Certification LLC

Disclaimer: While Broad Reach Retail Partners, LLC and its affiliates believe the information contained herein to be true and accurate, they make no claims or warranties. Any prospective tenant should conduct thorough, independent due diligence.

For leasing information, please contact:  
**Kimberly Todd**  
 ktodd@broadreachretail.com | 443.225.4479

[www.broadreachretail.com](http://www.broadreachretail.com)