



## For Lease

### Contact us:

#### Ben Anderson

Associate Vice President  
+1 757 634 9902  
ben.r.anderson@colliers.com

#### Chamie Burroughs

Senior Vice President  
+1 757 478 9626  
chamie.burroughs@colliers.com



#### Colliers

150 West Main St | Suite 1100  
Norfolk, VA 23510  
P: +1 757 490 3300

## 19,853 SF Industrial Warehouse

1081 W. 35th Street, Norfolk, VA

### Building Features:

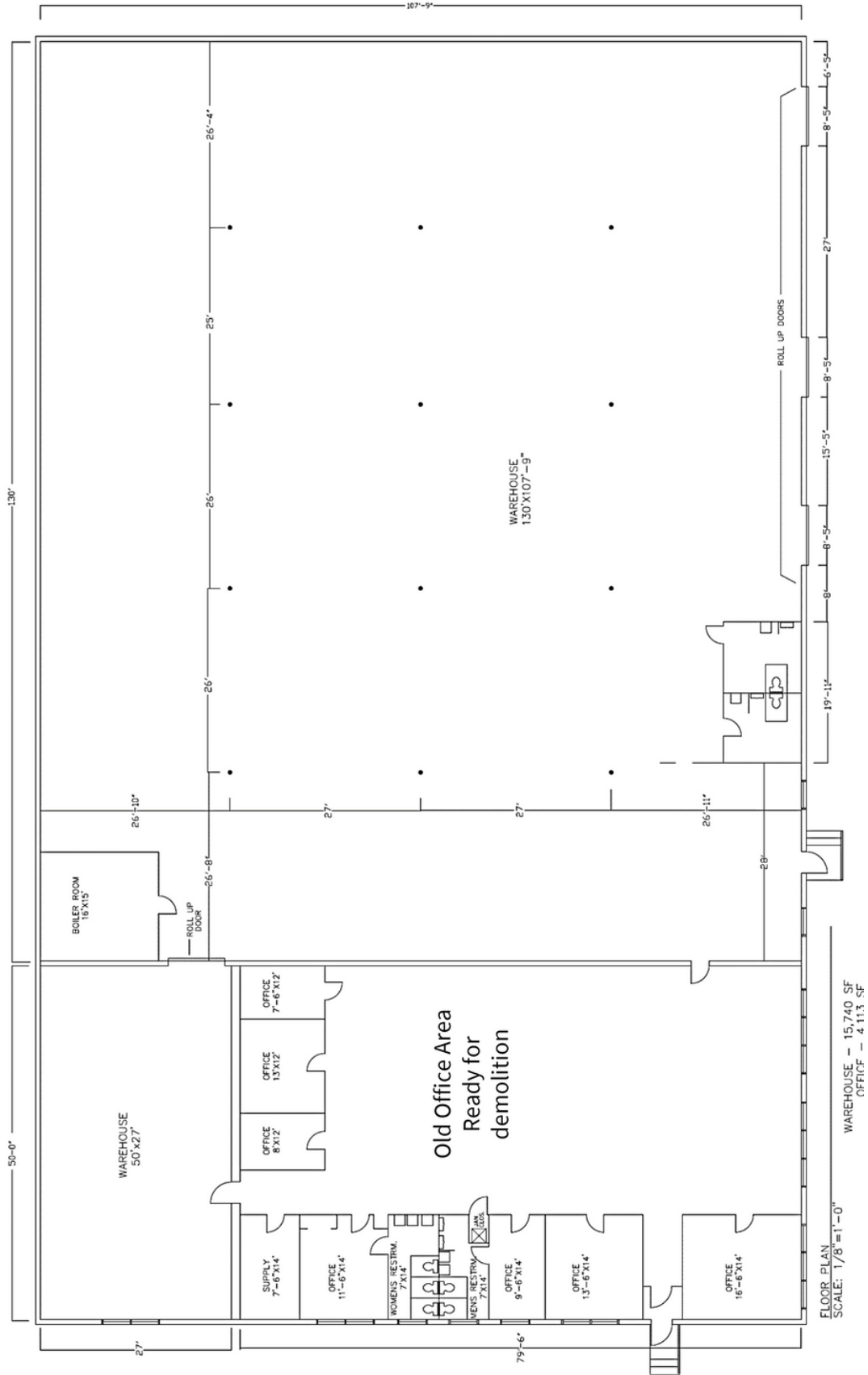
- **Size:** 19,853 SF
  - » Warehouse: 15,740 SF
  - » Office: 4,113 SF
- **Parking:** 30 spaces
- **Loading:** Three (3) 9'x9' dock doors on exterior loading platform
- **Column Spacing:** 26' x 26'
- **Clear Height:** 15'
- **Zoning:** IL (Light Industrial)
- **Lease Rate:** \$10.50/SF NNN



# Property Gallery



# Floor Plan





S.B. Ballard  
Stadium

CHARTWAY  
FEDERAL CREDIT UNION

Ted Constant  
Convocation  
Center



ODU Student  
Housing

1081 W. 35th St.

Hampton Boulevard (39,000 VAD)

Railyard At  
Lamberts Point

Over 500 new and under construction  
apartments along 22nd Street.

## Ben Anderson

Associate Vice President  
+1 757 634 9902  
ben.r.anderson@colliers.com

## Chamie Burroughs

Senior Vice President  
+1 757 478 9626  
chamie.burroughs@colliers.com



Accelerating success

This document has been prepared by Colliers International for advertising and general information only. Colliers International makes no guarantees, representations or warranties of any kind, expressed or implied, regarding the information including, but not limited to, warranties of content, accuracy and reliability. Any interested party should undertake their own inquiries as to the accuracy of the information. Colliers International excludes unequivocally all inferred or implied terms, conditions and warranties arising out of this document and excludes all liability for loss and damages arising there from. This publication is the copyrighted property of Colliers International of Virginia, LLC. ©2026. All rights reserved.