

FOR SALE

9546 ELDER CREEK RD, SACRAMENTO, CA 95829



PROPERTY OVERVIEW

SIZE:	± 8.16 AC ( ±9.061 AC gross, property line extends into Elder Creek Road)
APN:	066-0010-032
COUNTY:	Unincorporated Sacramento County
FRONTAGE:	±528' of Elder Creek Road frontage
ACCESS:	Easy access to Hwy 50 and Hwy 99
SHAPE:	Rectangular
CC&Rs:	Existing
LOCATION:	Greenfield
TOPOGRAPHY:	Generally flat
ZONE:	Sacramento County Opportunity Zone
ZONING:	M1 - Light Industrial
PRICE:	\$2,600,000

Michael Walker  
mwalker@lee-associates.com  
D 510.914.0310

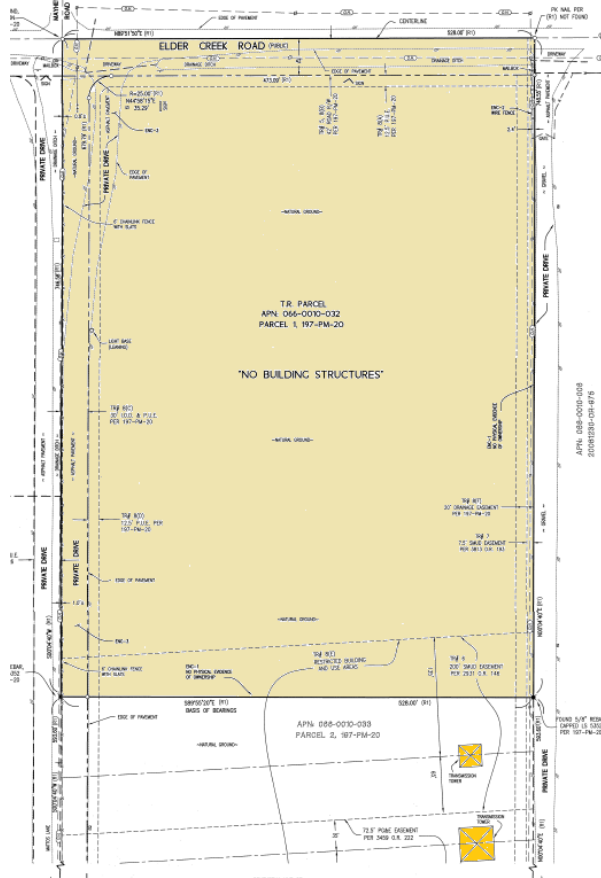
All information furnished regarding property for sale, rental or financing is from sources deemed reliable, but no warranty or representation is made to the accuracy thereof and same is submitted to errors, omissions, change of price, rental or other conditions prior to sale, lease or financing or withdrawal without notice. No liability of any kind is to be imposed on the broker herein.

FOR SALE

9546 ELDER CREEK RD, SACRAMENTO, CA 95829



FLOOR PLAN

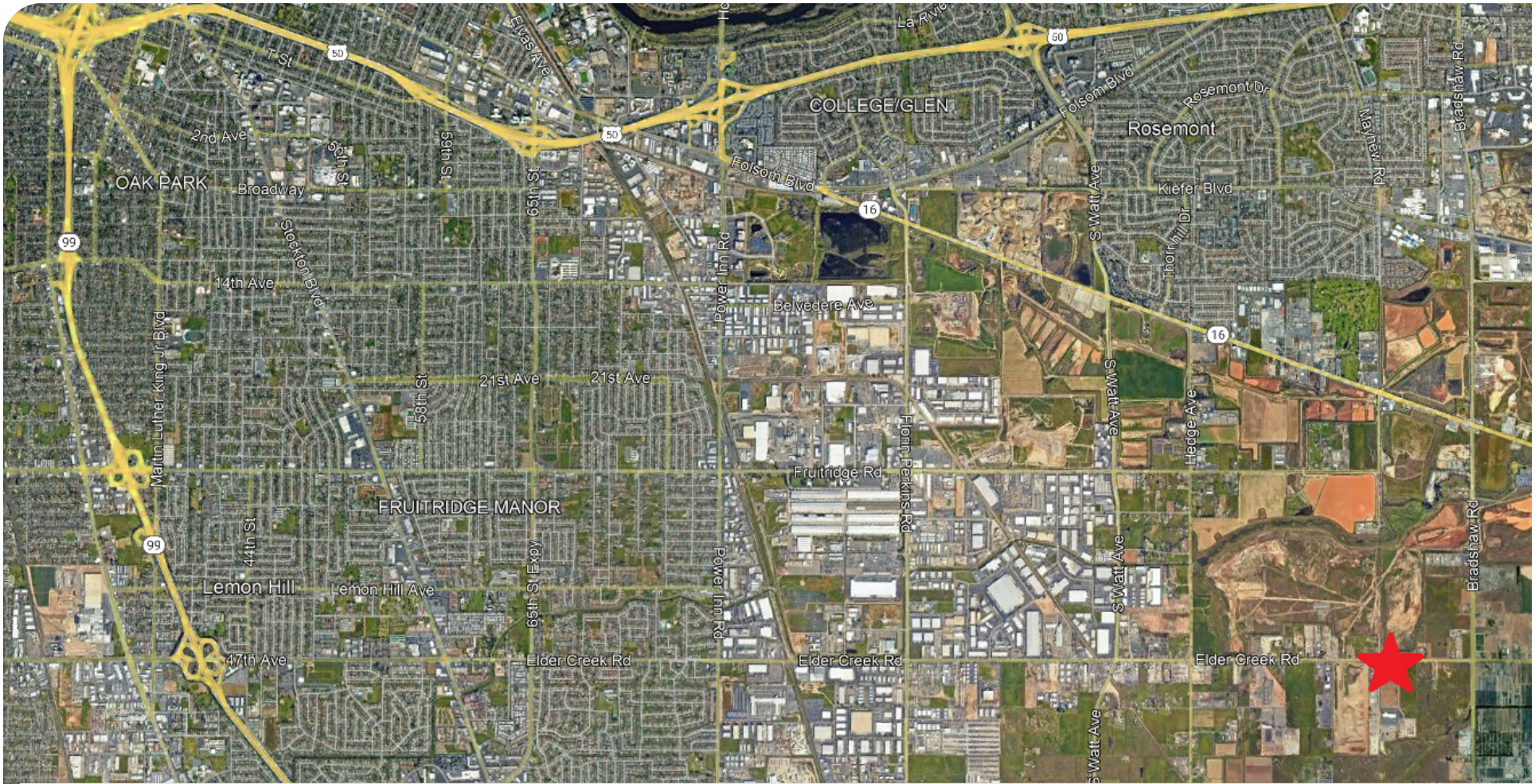


Michael Walker  
mwalker@lee-associates.com  
D 510.914.0310

All information furnished regarding property for sale, rental or financing is from sources deemed reliable, but no warranty or representation is made to the accuracy thereof and same is submitted to errors, omissions, change of price, rental or other conditions prior to sale, lease or financing or withdrawal without notice. No liability of any kind is to be imposed on the broker herein.

FOR SALE

9546 ELDER CREEK RD, SACRAMENTO, CA 95829



LOCATION AERIAL

Michael Walker  
mwalker@lee-associates.com  
D 510.914.0310

All information furnished regarding property for sale, rental or financing is from sources deemed reliable, but no warranty or representation is made to the accuracy thereof and same is submitted to errors, omissions, change of price, rental or other conditions prior to sale, lease or financing or withdrawal without notice. No liability of any kind is to be imposed on the broker herein.