

For Lease

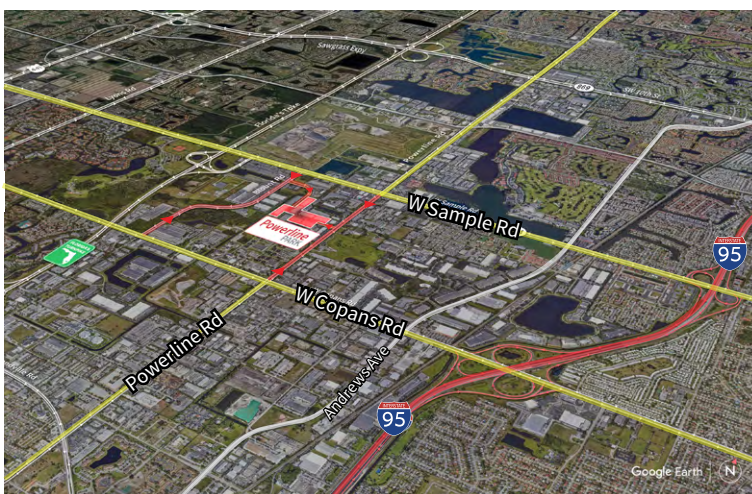
Powerline Park
3000 NW 25th Avenue
Pompano Beach, FL 33069



Industrial Space For Lease
6,485 SF

Powerline Park

3000 NW 25th Avenue, Suite 20, Pompano Beach, FL 33069



Location

- Easy access off Sample Road and Powerline Road
- Excellent access to I-95 and the Florida Turnpike
- Equidistant to Fort Lauderdale/Hollywood International Airport and Palm Beach International Airport

Space Features

- 6,485 SF total
- 700 SF of office
- 5,785 SF of warehouse
- 16' clear height
- Two (2) grade level doors
- One (1) dock high door
- Parking ratio: 2.0/1,000 sf
- Available Now



© 2023 Jones Lang LaSalle IP, Inc.

Yuri Quispe

D +1 954 233 3462

M +1 772 201 5305

yuri.quispe@jll.com

Peter Sheridan

D +1 954 653 3235

M +1 954 439 4941

peter.sheridan@jll.com

Peter Johnston

D +1 954 233 3429

M +1 954 980 3224

peter.johnston1@jll.com



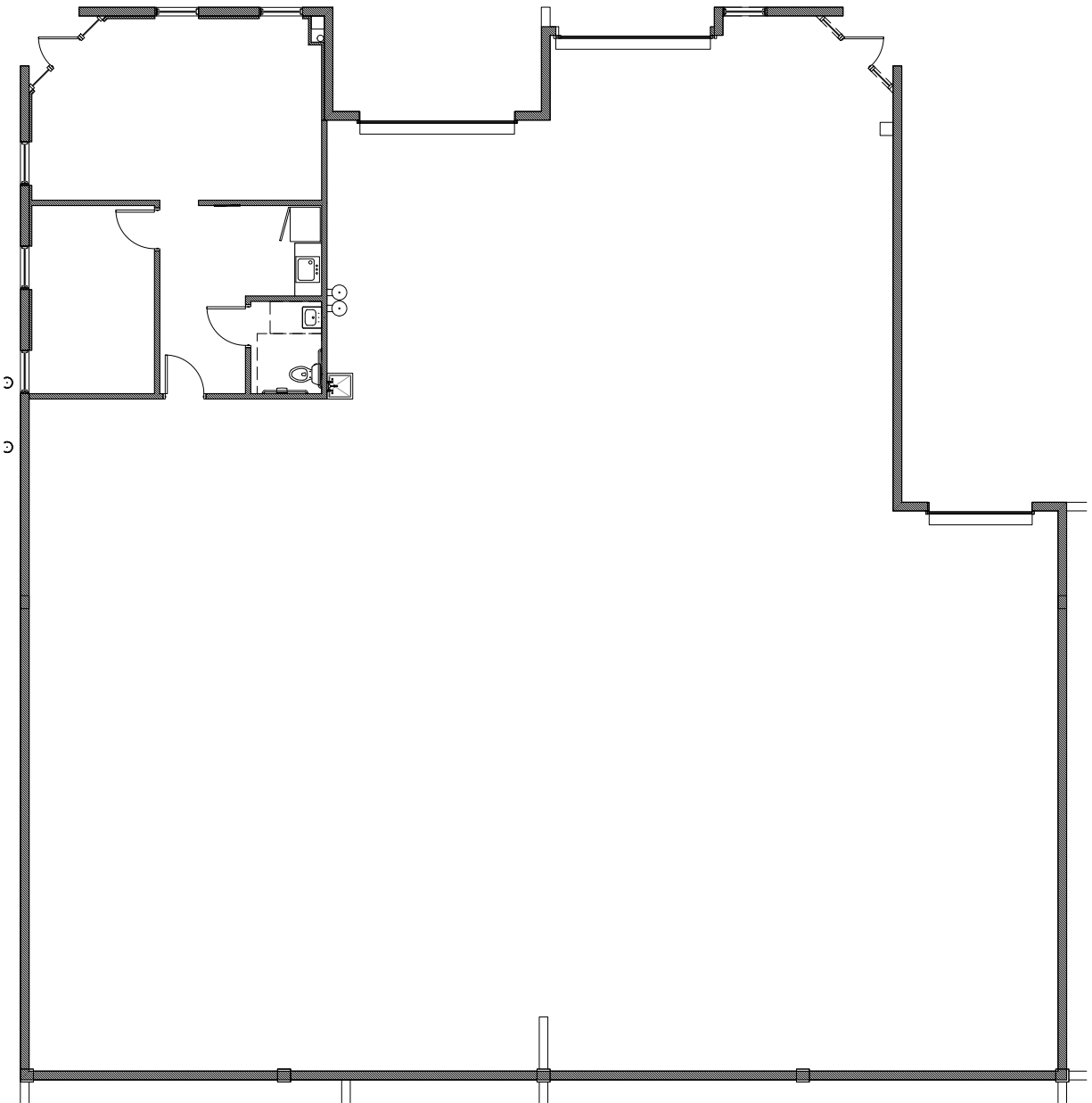
For Lease

Powerline Park

3000 NW 25th Avenue, Pompano Beach, FL 33069

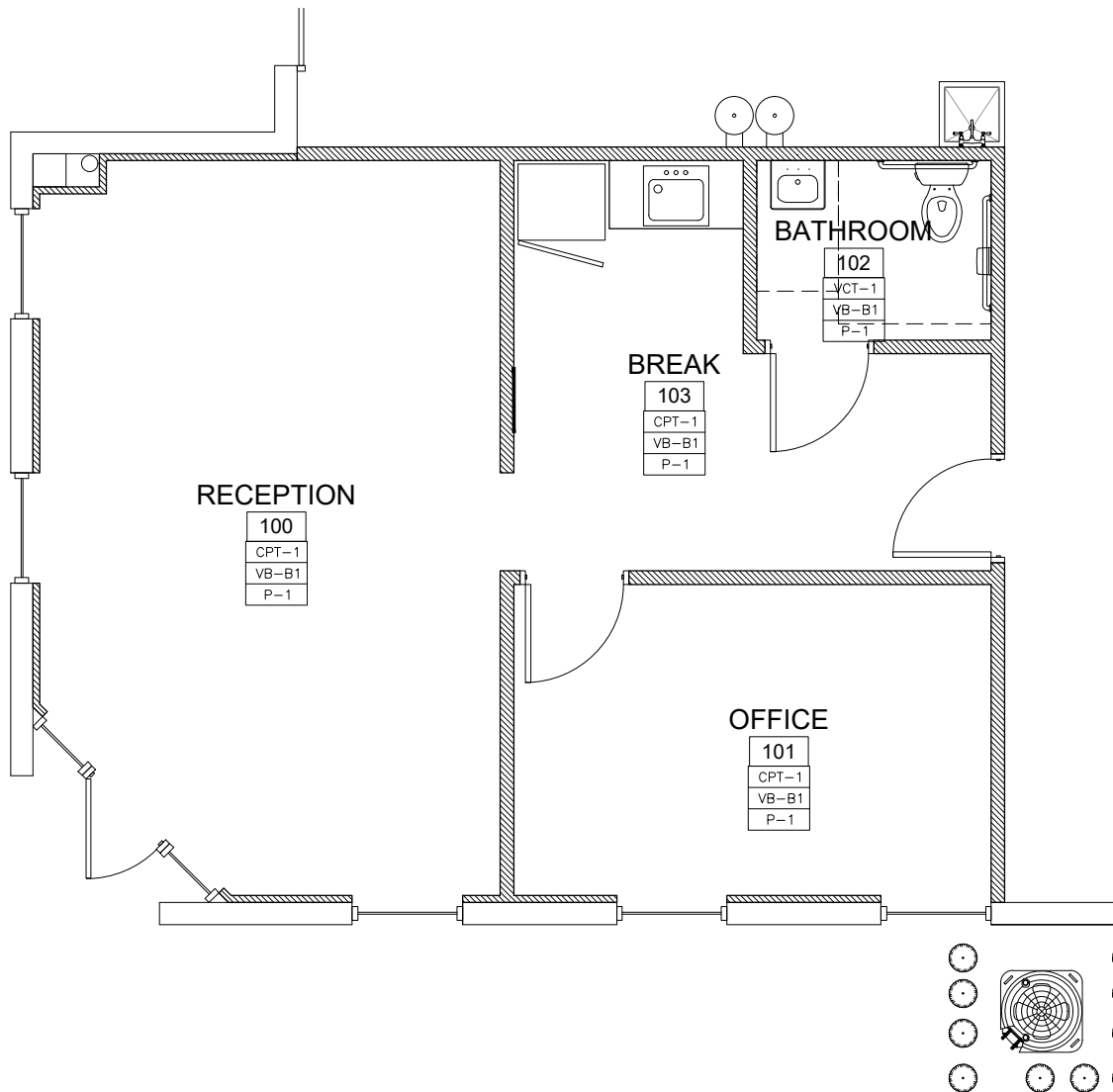
Powerline Park Floor Plan - Suite 20

Total: 6,485 SF
Office: 700 SF
Warehouse: 5,785 SF



Powerline Park Office Floor Plan - Suite 20

Total: 6,485 SF
Office: 700 SF
Warehouse: 5,785 SF



Powerline Park Site Plan

■ - Subject Property



Building	Suite	Total (SF)	Office (SF)	Warehouse (SF)	Loading	Clear Height	Available Date
6	20	6,485	700	5,785	1 DH / 2 G	16'	Now

