



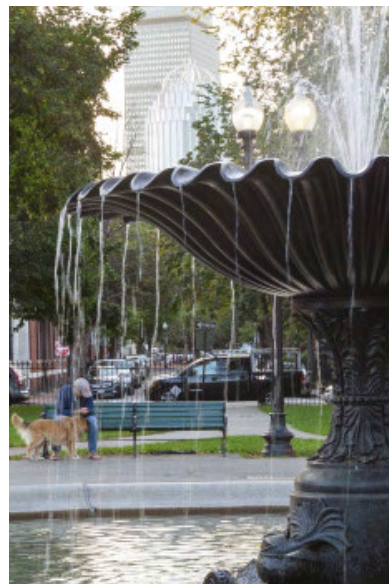
1365

WASHINGTON STREET

SOUTH END

3,628 SF AVAILABLE FOR LEASE | SOUTH END

1365 WASHINGTON STREET



Boston's historic South End neighborhood is home to one of the City's most vibrant and active residential communities. Distinguished by its rows of Victorian townhomes, and by treelined streets and squares, it's easy to see why the South End has emerged as one of Boston's most desirable addresses. The neighborhood is lending itself to be a cultural destination for visitors and residents alike

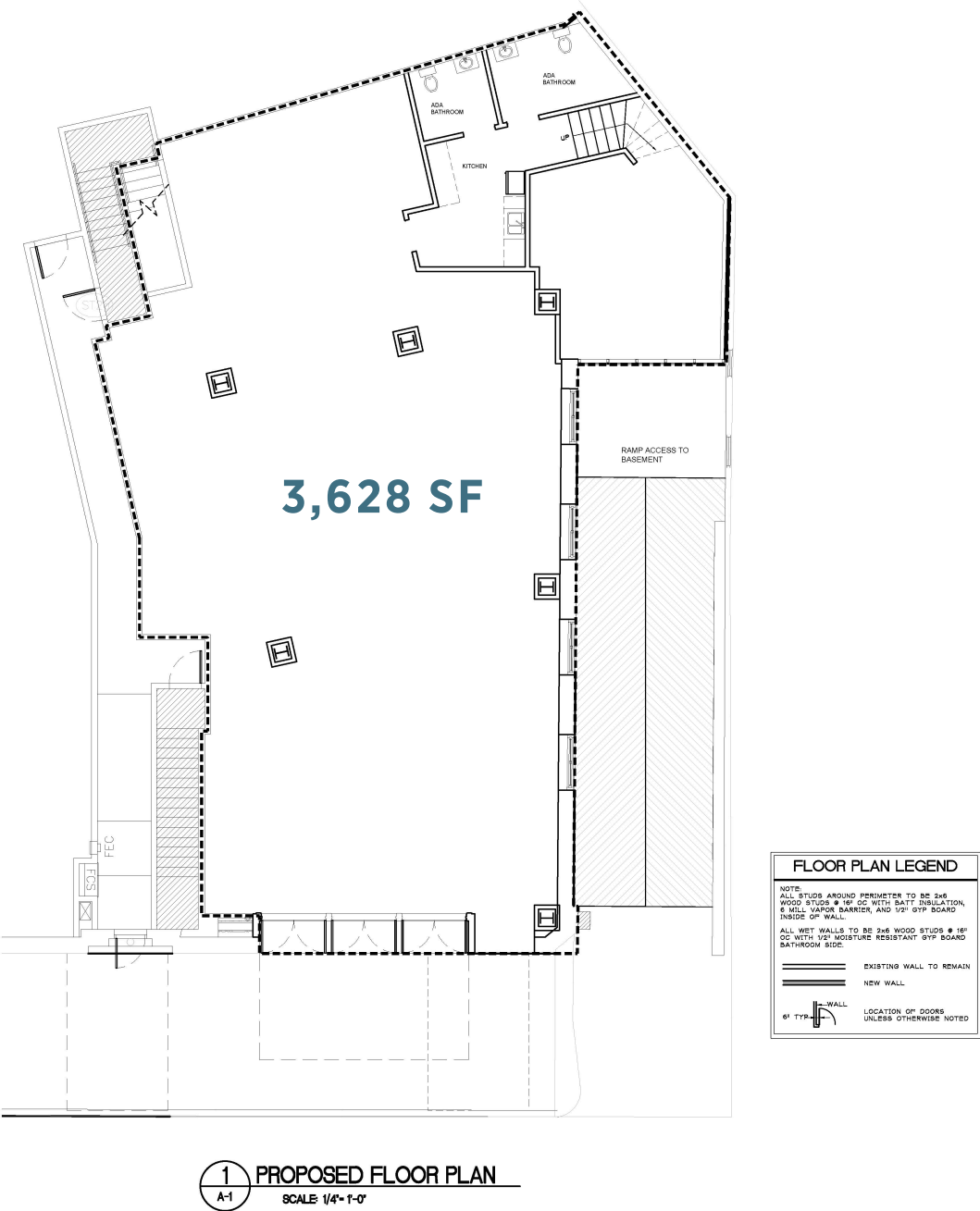
- The area is home to numerous galleries, studios, and creative spaces
- The South End is known for its excellent restaurants, cafes, and bars
- Well-connected to public transportation, the South End makes it easy to get around the city. Loft office spaces and the nearby Boston Medical Center contribute to the already strong daytime population of the neighborhood
- With its vibrant arts scene, excellent restaurants, charming architecture, and convenient location, it's easy to see why so many people choose to call this area home

SITE HIGHLIGHTS:

- 3,628 SF
- Street Level Retail on Washington Street
- Available Now
- Co-tenancy with Boston Chops
- Up to 2 Parking Spaces Available



FLOOR PLAN



SOUTH END | BOSTON, MA



1365 WASHINGTON STREET BOSTON, MA | 3,628 SF AVAILABLE FOR LEASE

SOUTH END ZOOM IN



1365
WASHINGTON STREET

DEMOGRAPHICS	¼ MILE	½ MILE	1 MILE
Population	7,701	26,672	85,733
Daytime Population	9,178	44,547	206,437
Avg HH Income	\$194,636	\$187,254	\$166,992

1365 WASHINGTON STREET BOSTON, MA | 3,628 SF AVAILABLE FOR LEASE

1365 WASHINGTON STREET BOSTON, MA | 3,628 SF AVAILABLE FOR LEASE



 **Atlantic**
RETAIL

JACK LYMAN 860.391.1736
JLYMAN@ATLANTICRETAIL.COM

MARY POWERS 617.694.6922
MPOWERS@ATLANTICRETAIL.COM

WWW.ATLANTICRETAIL.COM