

For Lease

CBRE

1515 Half St SW

Available Immediately

1515 Half Street SW | Washington, D.C. 20024



Leasing Details

- + Sublease expiration: May 31, 2027
- + Column Spacing: 25'
- + 18,662 SF
- + Ceiling Height: 15'8" from slab under ceiling joists

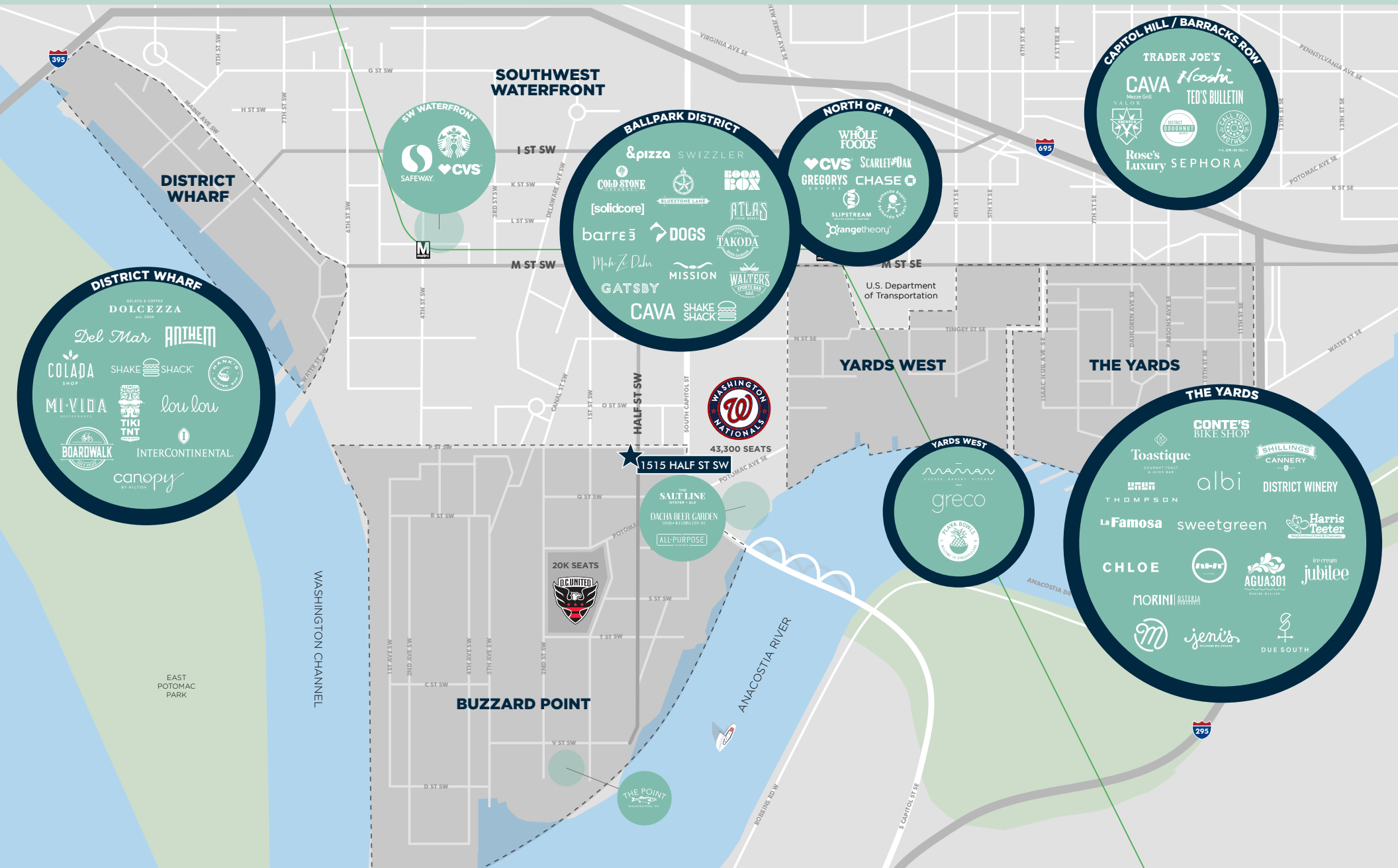
Property Overview

Uniquely positioned in the Buzzard Point neighborhood adjacent to the South Capitol traffic circle, this is the largest contiguous block of retail space currently available in the SW/SE neighborhoods in DC.

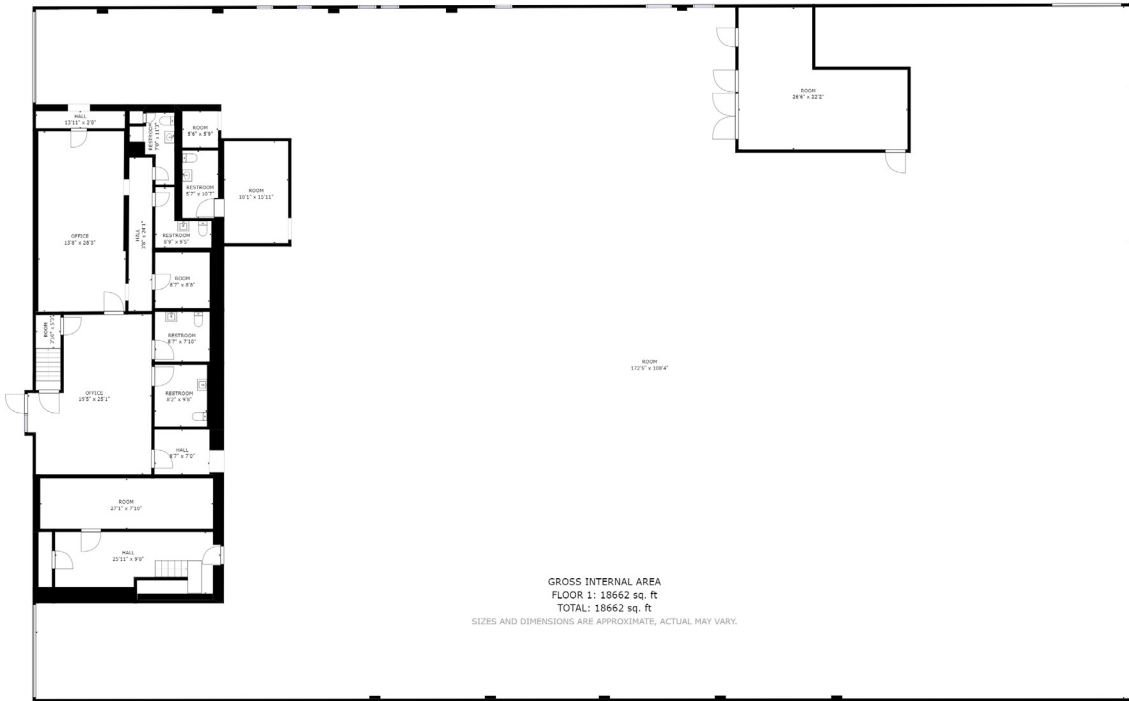
We're actively seeking users in the retail, "eatertainment," food & beverage, medical, early childhood education, doggie daycare, carwash, etc.

Retail

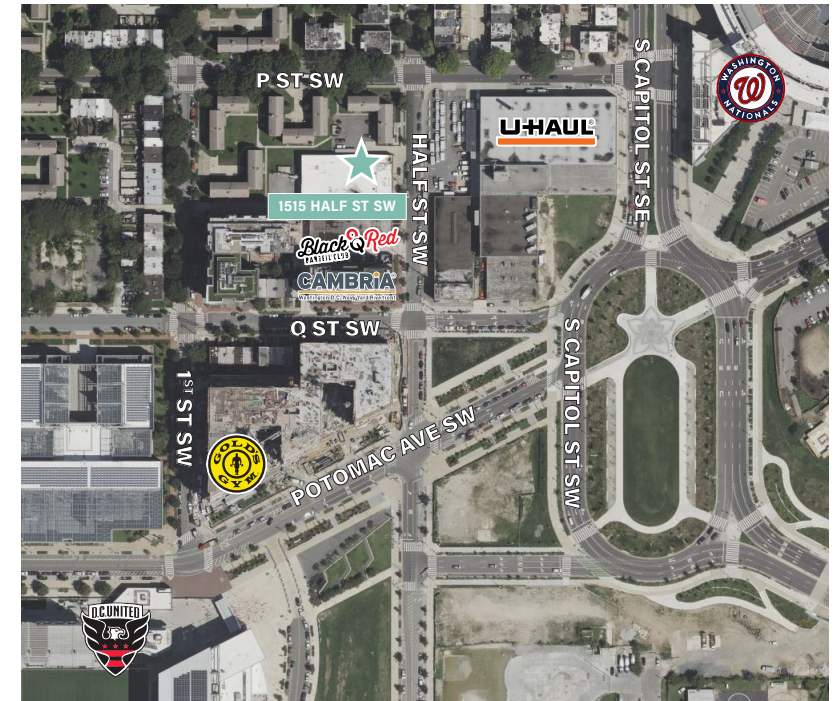
Area Map



Floor Plan



Close-In



Contact Us

Jared Meier
First Vice President
+1 202 209 6868
jared.meier@cbre.com

Taylor Hayes
Vice President
+1 202 585 5734
taylor.hayes@cbre.com

© 2025 CBRE, Inc. All rights reserved. This information has been obtained from sources believed reliable but has not been verified for accuracy or completeness. CBRE, Inc. makes no guarantee, representation or warranty and accepts no responsibility or liability as to the accuracy, completeness, or reliability of the information contained herein. You should conduct a careful, independent investigation of the property and verify all information. Any reliance on this information is solely at your own risk. CBRE and the CBRE logo are service marks of CBRE, Inc. All other marks displayed on this document are the property of their respective owners, and the use of such marks does not imply any affiliation with or endorsement of CBRE. Photos herein are the property of their respective owners. Use of these images without the express written consent of the owner is prohibited.