

HOMETRUST BANK BUILDING

1907 North Roan Street
Johnson City, TN 37601

Location

Next to the mall on North Roan Street

Available for Lease

2nd Floor

Suite 200: 441 SF - \$19/SF/year gross

Highlights

High visibility right next to The Mall at Johnson City

On the corner of a busy intersection with a traffic light

1 mile from I-26 exit 20

All utilities included except phone & internet

Traffic Counts

| | |
|-------------------|---------------|
| North Roan Street | 20,498 (2022) |
| I-26 | 56,157 (2022) |

Demographics

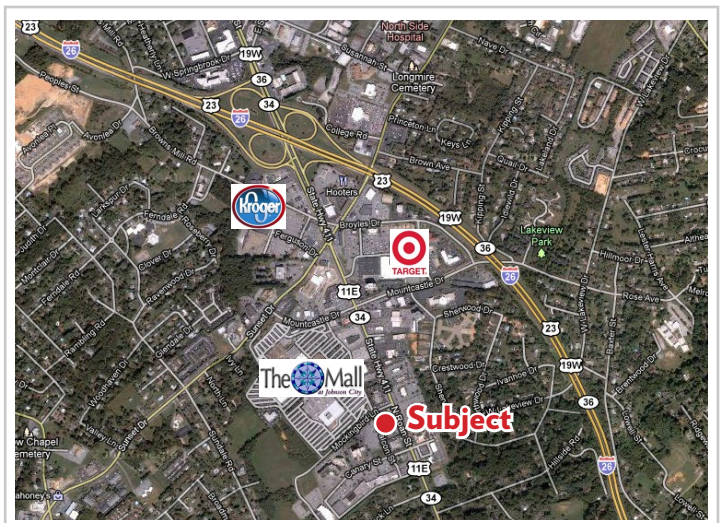
| (2024 Est.) | 3 mile | 5 mile | 10 mile |
|------------------|----------|----------|----------|
| Population | 49,675 | 85,302 | 168,157 |
| Median HH Income | \$52,599 | \$57,258 | \$62,957 |
| Median Age | 36.0 | 38.0 | 41.6 |

Contact

Marc Murphy, CCIM
mmurphy@mitchcox.com

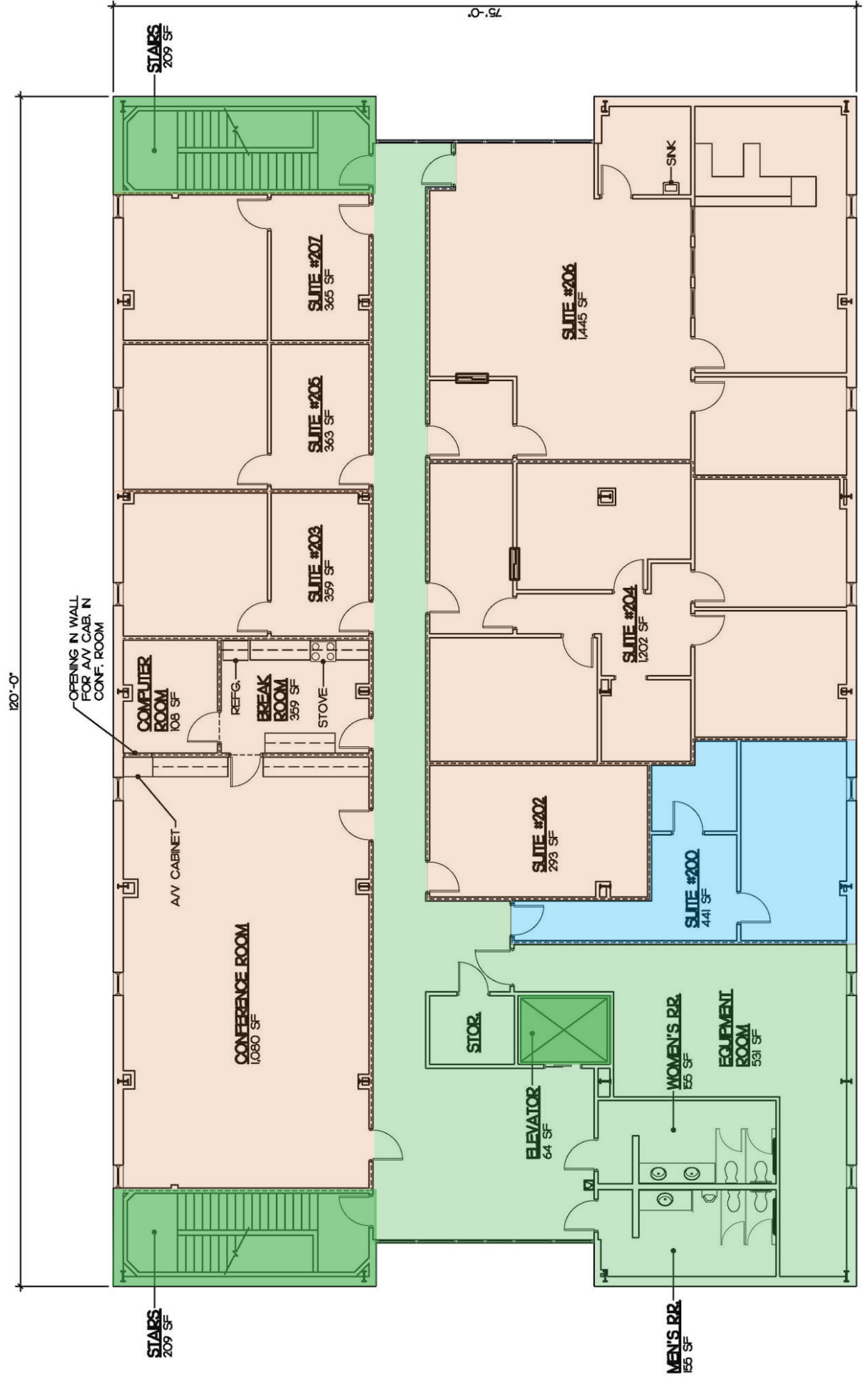
John Speropulos, CCIM, SIOR
john@mitchcox.com

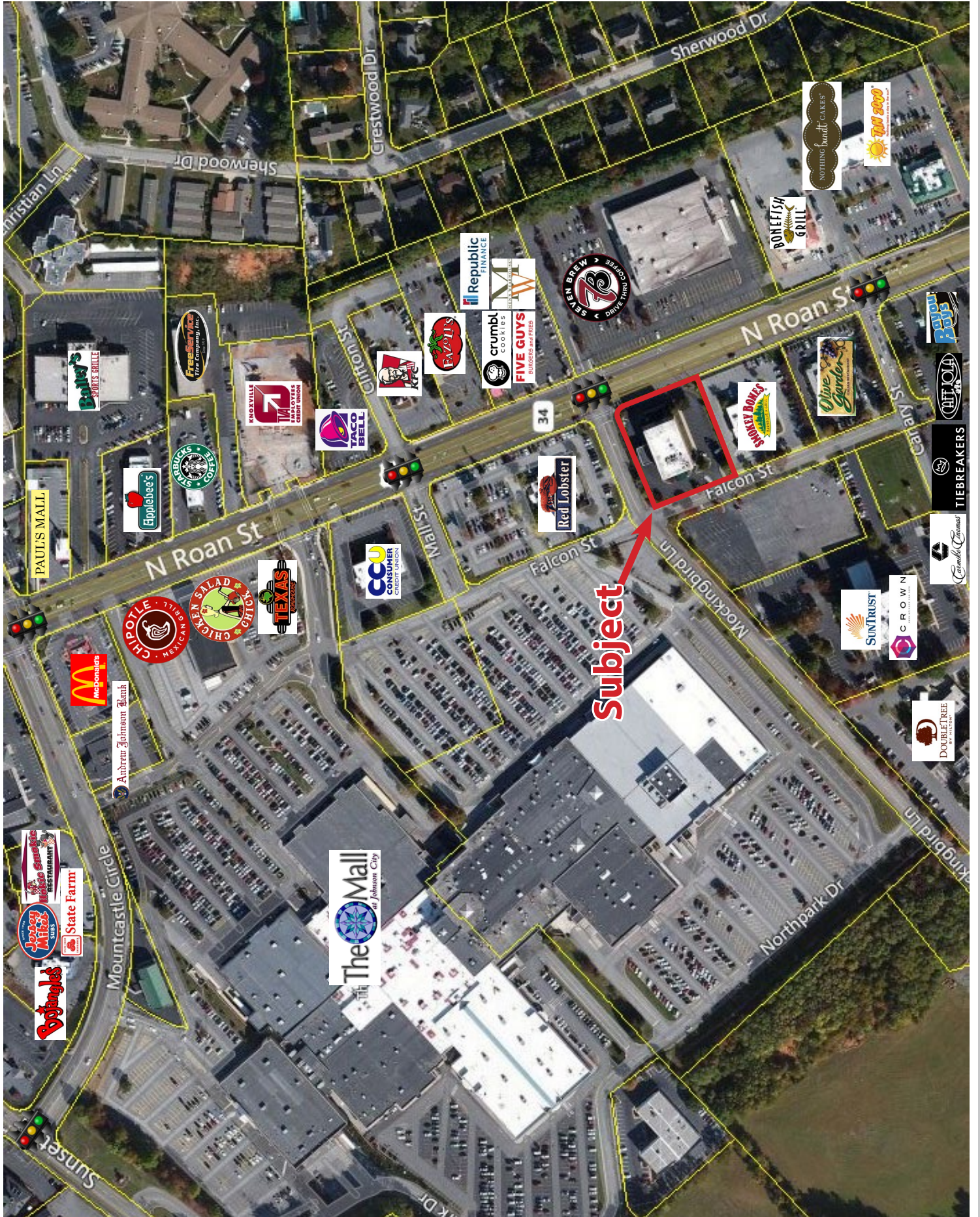
📞 423-282-6582 | 📠 423-282-5903
www.mitchcox.com



2nd Floor

- Available
- Common Area
- Occupied





subject

PAUL'S MALL

McDonald's

Andrew Johnson Bank

CHIPOTLE MEXICAN GRILL

CHICKEN SALAD CRICKET

TEXAS ROADHOUSE

The Mall at Johnson City

CCU CONSUMER CREDIT UNION

TACO BELL

KNOXVILLE EMPLOYERS CREDIT UNION

FreeSonic Fire Company, Inc.

Applebee's

Bojangles' SPORTS GRILLE

Christian Ln

N Roan St

Grestwood Dr

Sherwood Dr

35

34

Falcon St

Falcon St

Mockingbird Ln

Northpark Dr

Kingbird Ln

N Roan St

Caney St

Republic FINANCE

crumbl COOKIES

FIVE GUYS BURGERS and FRIES

FAZZIOLI'S

KENTUCKY FRIED CHICKEN

Red Lobster

SMOKEY BONES

Wine Garden

RAVENS

HIT LOLA

TIEBREAKERS

Carnegie Cinema

SUNTRUST

CROWN

DOUBLE TREE BY HILTON

NOTHING BUT CAKES

THE 5000

BON LETA GRILL

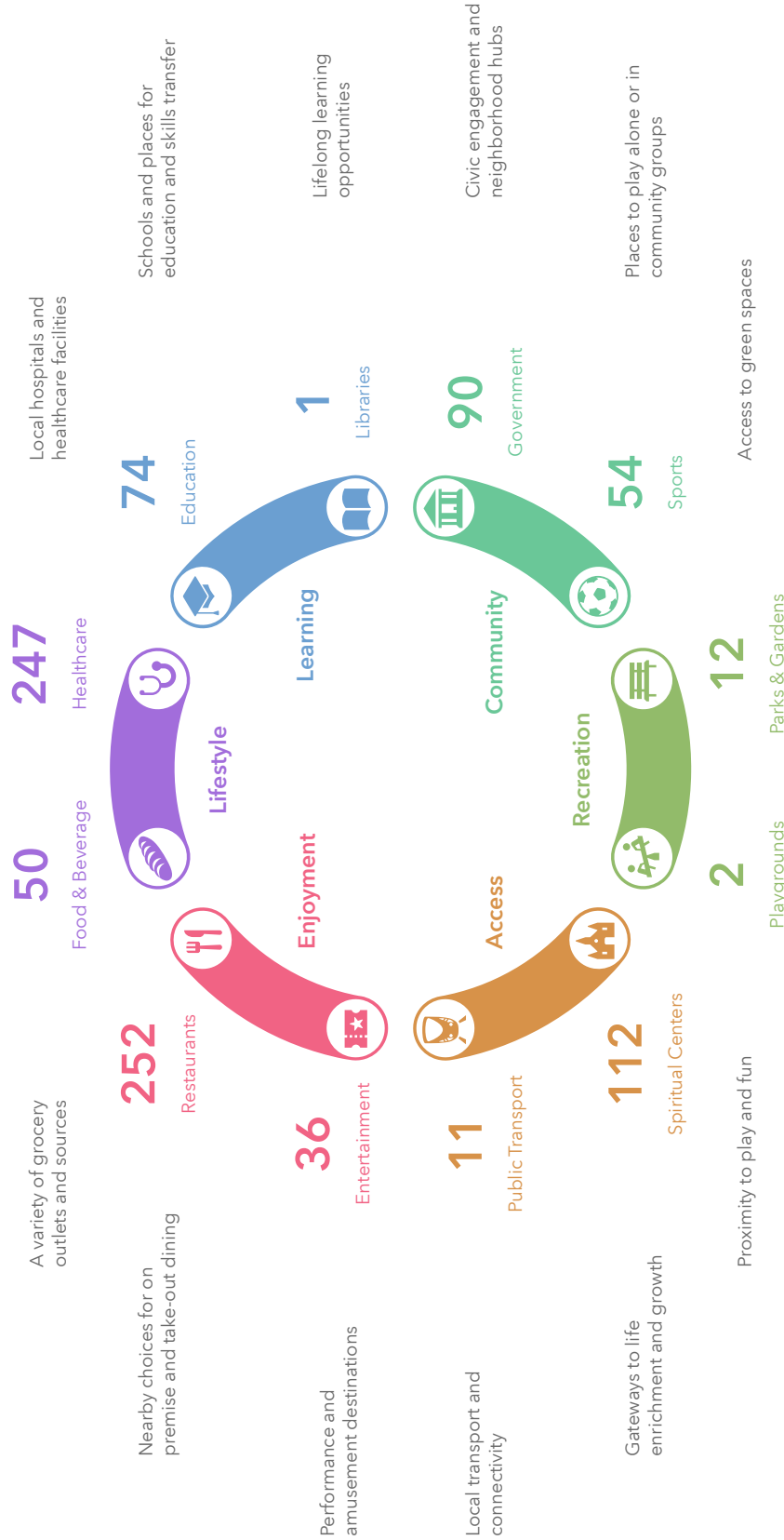
SEVEN BREW DRIVE THRU COFFEE



What's in My Community?

Places that make your life richer and community better

1907 N Roan St, Johnson City, Tennessee, 37601 6
3 miles



This infographic was inspired by the visionary [Plan Melbourne](#) and the hyper proximity 20-minute neighbourhoods concept. Points of interest are grouped into civic themes which contribute to livability and community engagement.

Points of interest are sourced from [Foursquare](#) and updated 3 times per year. * Indicates the number of locations has reached the maximum. © 2025 Esri



MITCH COX
REALTOR, INC.

2304 Silverdale Drive, Suite 200, Johnson City, TN 37601
423-282-6582 (o) 423-282-5903 (f) www.mitchcox.com