



LAND FOR SALE - 29.45 ACRES

Industrial Park Road
Pennsville Township, NJ 08070



PROPERTY DETAILS

PROPERTY HIGHLIGHTS

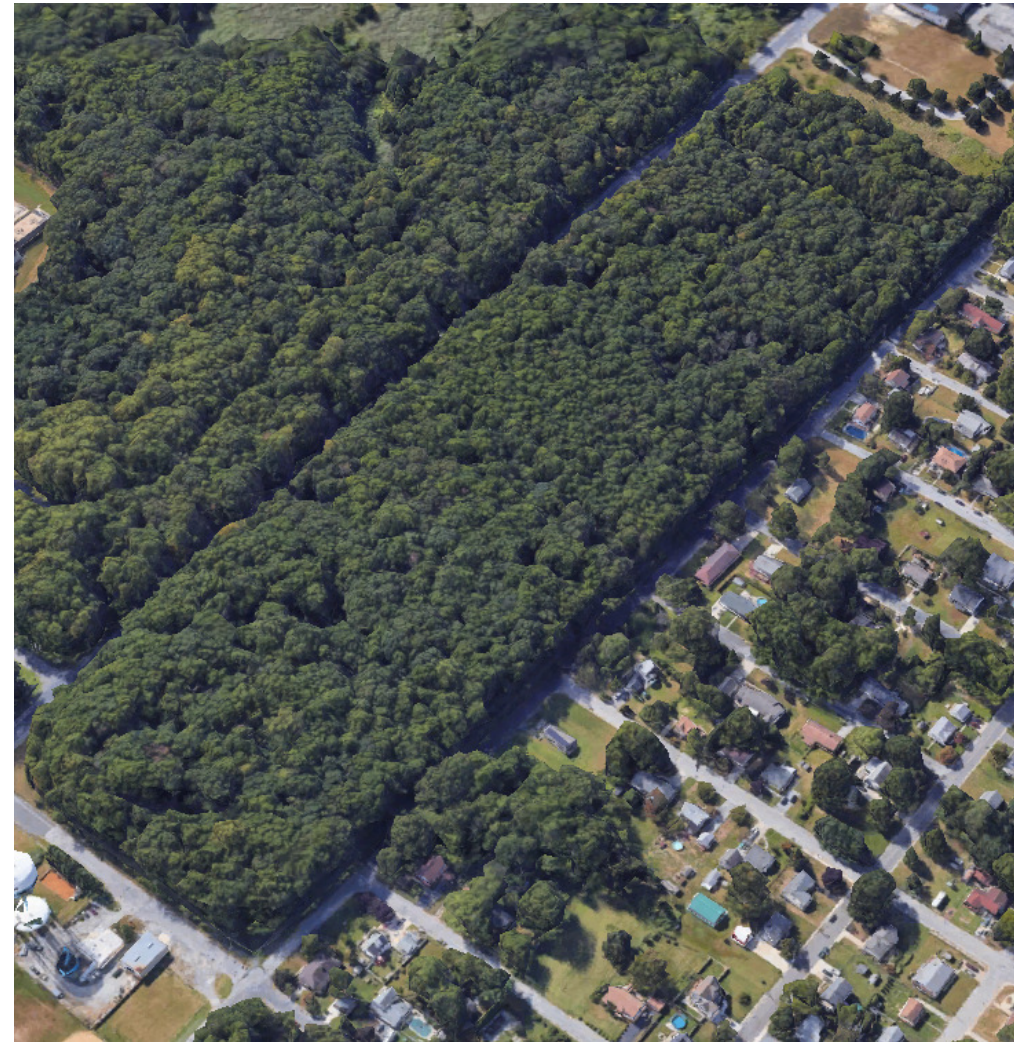
- 29.45 AC
- Mean Elevation: 9.4' (4802/4), 10' (4802/3.01)
- Block/Lot: 4802/3.01,4
- Zoning: M - Mixed-Use (Township of Pennsville)
- Estimated 2025 Taxes: \$5,141.82

DIMENSIONAL REGULATIONS

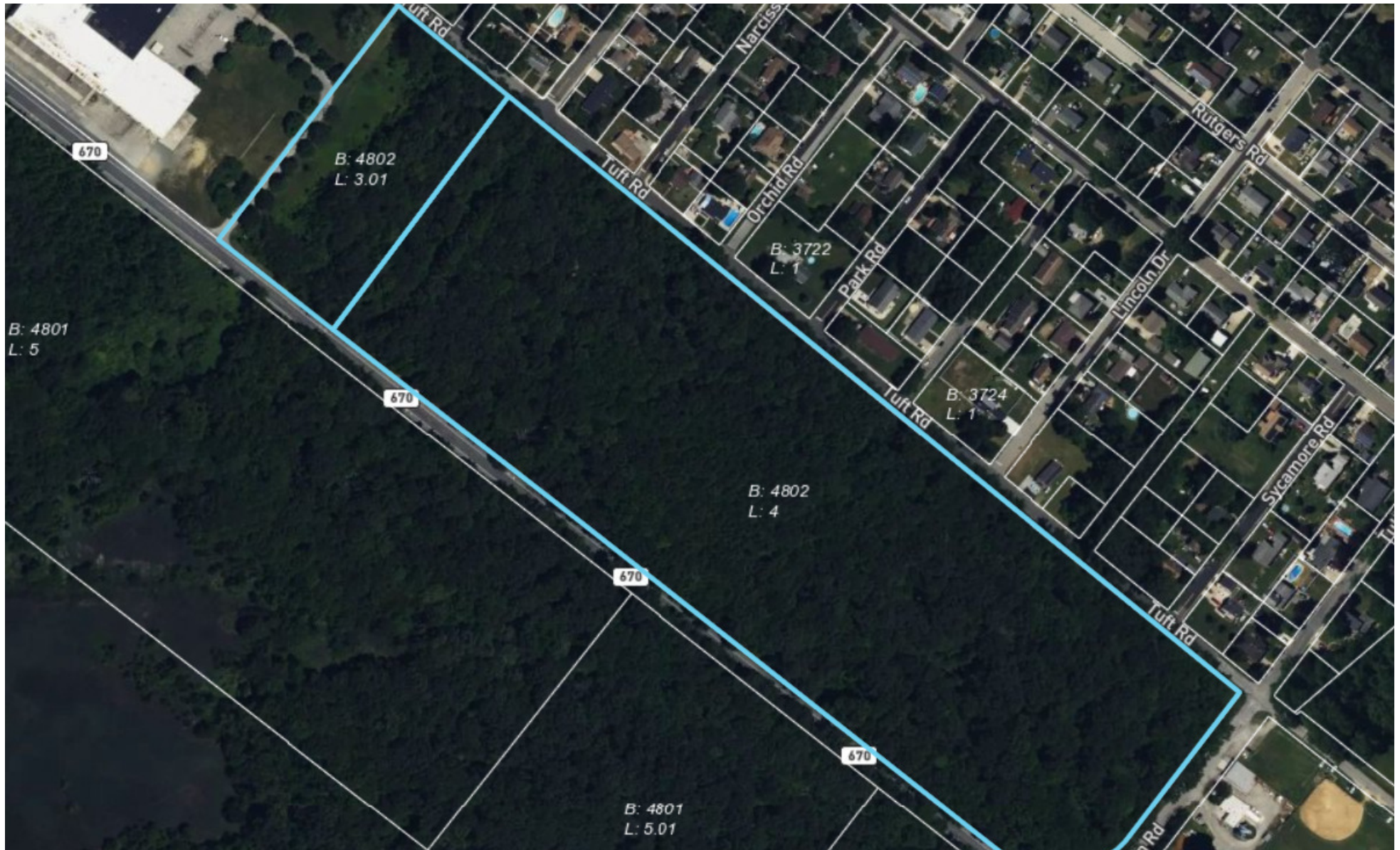
- Minimum lot area: 2 Acres
- Minimum lot frontage, width, and depth: 200 feet (each)
- Front yard for principal structure: 50 feet
- Side and rear yards for principal structure: 10 feet minimum each
- Maximum height of principal structure: 50 feet
- Maximum stories: 2 stories
- Maximum impervious materials coverage: 65% of lot area
- Lot must abut an improved street

KEY DISTANCES

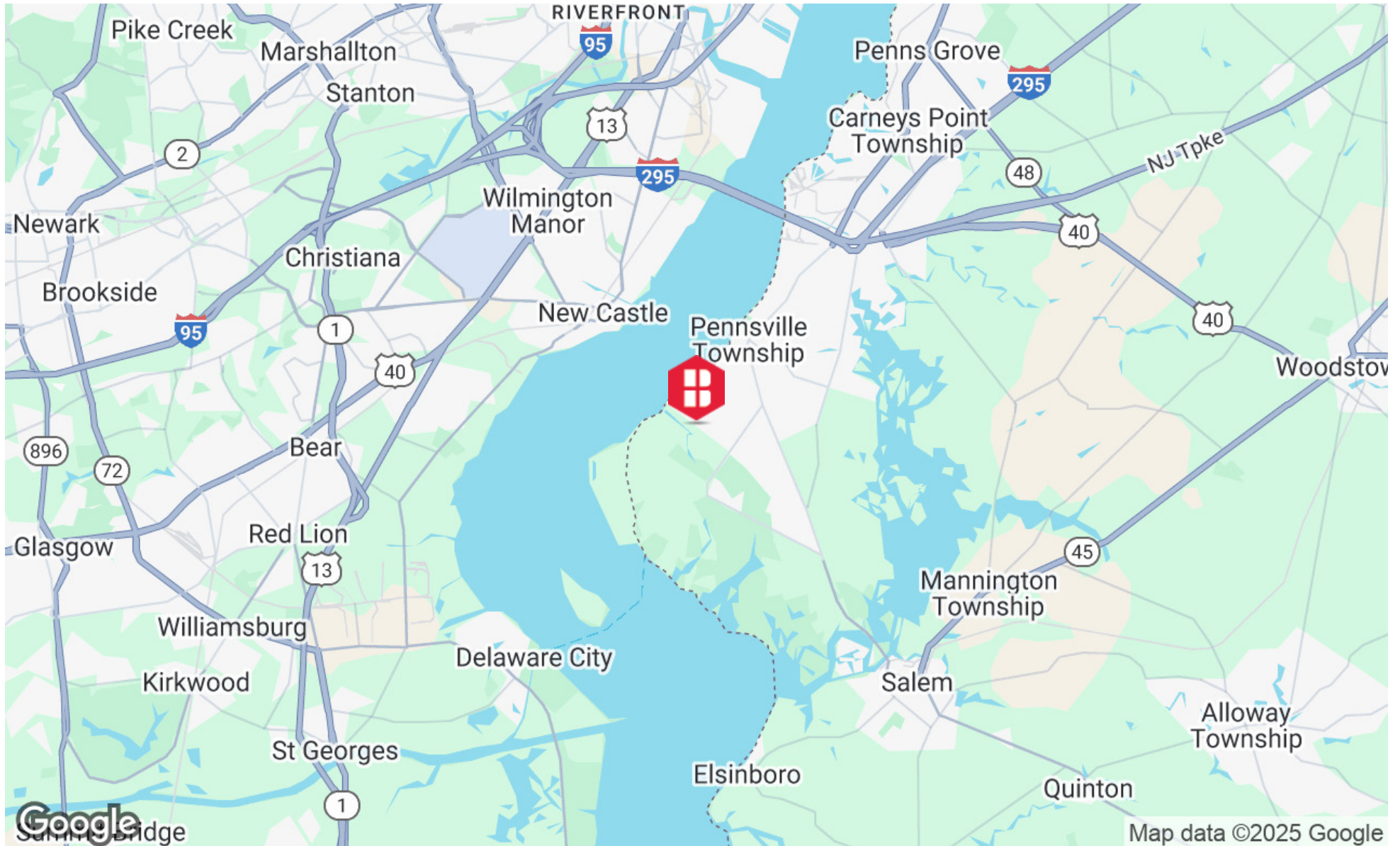
- Delaware Memorial Bridge: 6.2 miles
- Wilmington, DE: 12.2 miles
- Philadelphia International Airport: 30 miles
- Center City, Philadelphia: 40 miles



ADDITIONAL PHOTO



LOCATION MAP

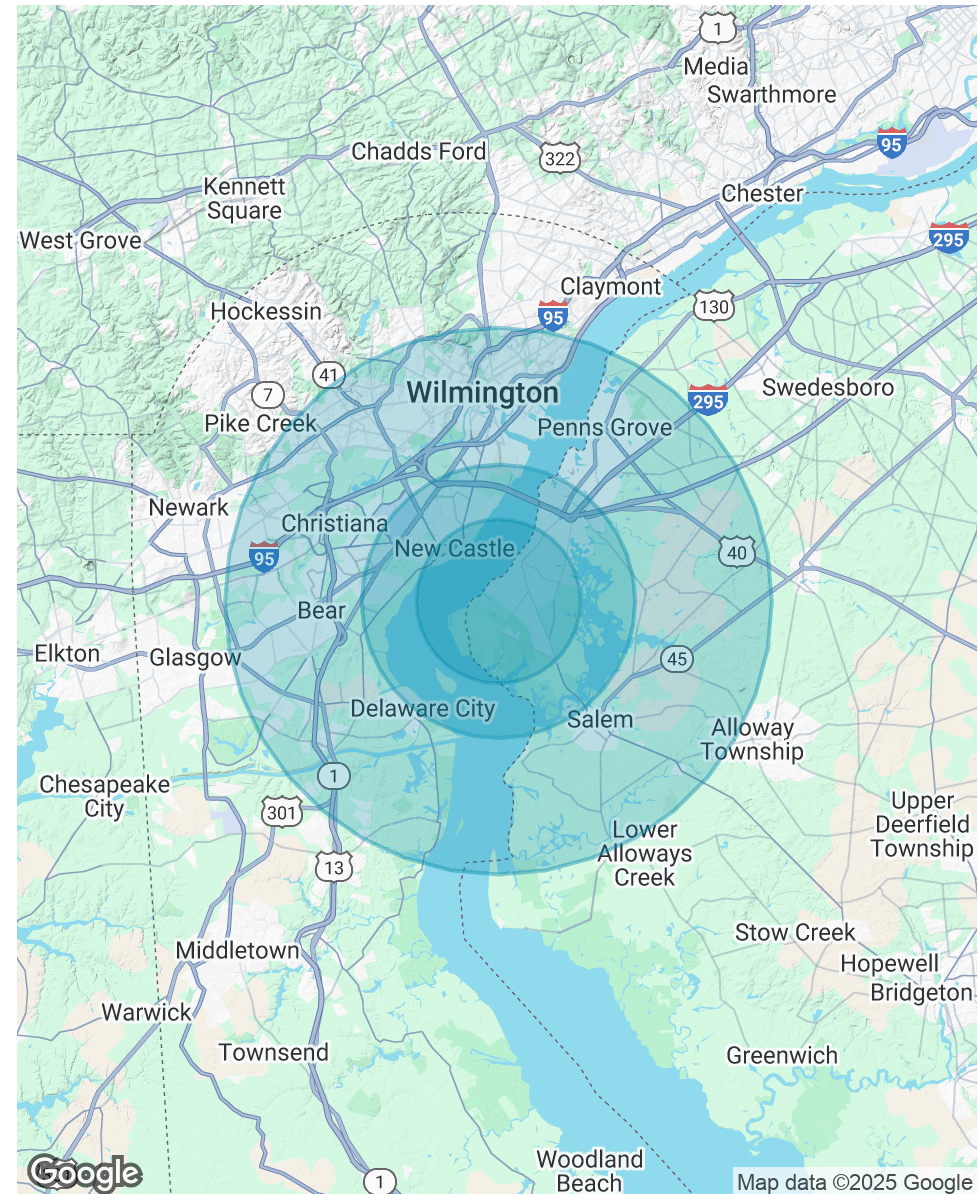


DEMOGRAPHICS MAP & REPORT

POPULATION	3 MILES	5 MILES	10 MILES
Total Population	14,535	56,365	376,547
Average Age	44	41	40
Average Age (Male)	43	40	39
Average Age (Female)	45	42	42

HOUSEHOLDS & INCOME	3 MILES	5 MILES	10 MILES
Total Households	6,240	22,316	150,321
# of Persons per HH	2.3	2.5	2.5
Average HH Income	\$91,900	\$89,519	\$92,373
Average House Value	\$250,319	\$259,439	\$310,267

Demographics data derived from AlphaMap



PRIMARY CONTACTS



Michael Torsiello, SIOR
Senior Vice President
215.448.6210
mtorsiello@binswanger.com



Nick Giganti
Vice President
215.448.6090
ngiganti@binswanger.com



Three Logan Square
1717 Arch Street, Suite 5100
Philadelphia, PA 19103
<https://www.binswanger.com>