

SOUTH CREEK CENTER

2511/2553/2603 KIRSTEN LANE S, FARGO, ND 58104

GOLDMARK™
COMMERCIAL REAL ESTATE INC



EXCELLENT RETAIL SPACES ON CORNER OF 32ND AVE & 25TH ST

SPACE AVAILABLE: 1,271 - 5,300 SF

BASE RENT: \$13.00 - \$26.00 PSF

CAM: \$6.50 PSF

Paul Campbell | 701.893.2826

paul.campbell@goldmark.com

Goldmark Commercial Real Estate

www.goldmarkcommercial.com

SOUTH CREEK CENTER

2511/2553/2603 KIRSTEN LANE S, FARGO, ND 58104



SPACE AVAILABLE

(2511) Suite 102 - Pending
Suite 103 - Pending
Suite 105 - 1,709 SF
Suite 107/108 - 1,534 SF

(2553) Suite 201 - 2,610 SF
Suite 202 - 1,435 SF
Suite 203 - 1,271 SF
Suite 206 - 2,199 SF

(2603) Suite 104 - 2,426 SF

BASE RENT

(2511) Suite 107/108 - \$13.00 PSF
(2553) Suite 201/206 - \$26.00 PSF
All other suites - \$18.00 PSF

CAM

\$6.50 PSF

TENANT EXPENSES

Utilities

TRAFFIC COUNTS

20,125 cars per day

PROPERTY DESCRIPTION:

This prime, ready to lease retail space is conveniently located in the established and high visibility South Creek Center at the corner of 32nd Ave S and 25th St. This area has high traffic counts (20,125 cars per day) and is easily accessible from both the east and west entry points. Turn-key end-cap restaurant space now available with hood system and drive-thru! Call today to move in to your new retail space!

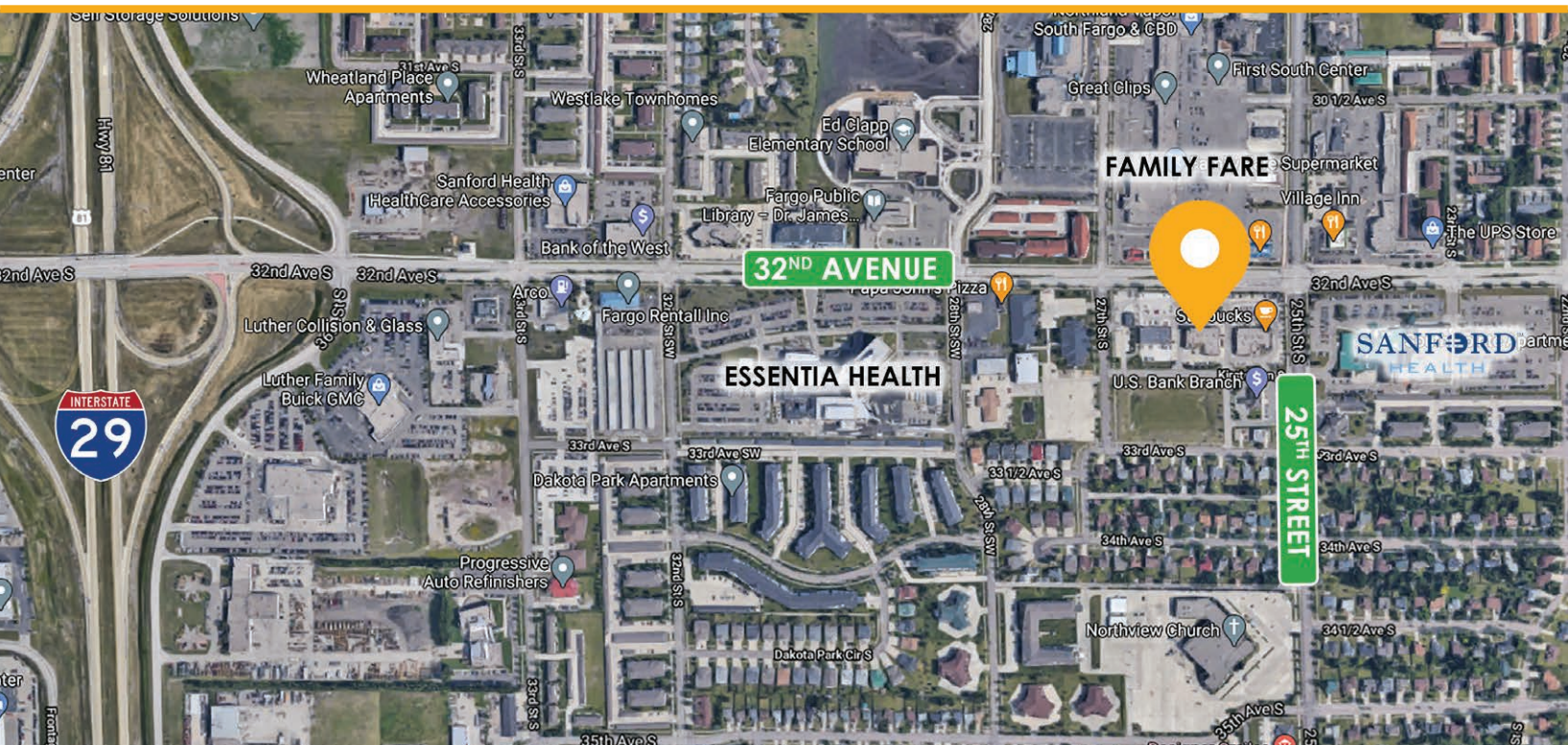
South Creek Businesses:

- Starbucks
- El Patron
- Elite 12 Fitness
- Noodle's & Co.
- Power Plate Meals
- Prairie Fiber Arts Center

Area Businesses:

- Chipotle
- Family Fare
- Subway
- Culvers
- Essentia Health
- Sanford Health
- Chase Bank
- U.S. Bank

This information has been secured from sources we believe to be reliable, but we make no representation or warranties, expressed or implied, as to the accuracy of the information. Interested parties should conduct their own independent investigations and rely only on those results.

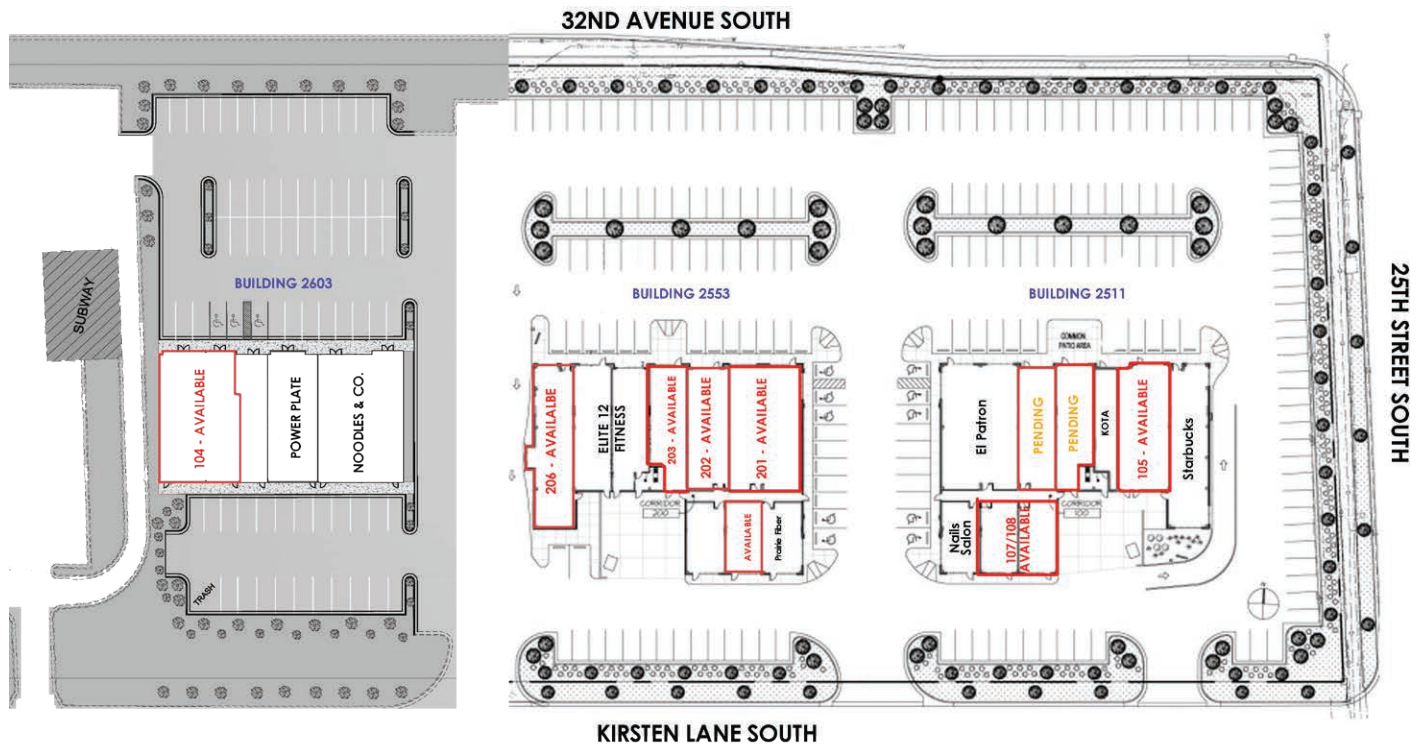


SOUTH CREEK CENTER

2511/2553/2603 KIRSTEN LANE S, FARGO, ND 58104

GOLDMARK™
COMMERCIAL REAL ESTATE INC

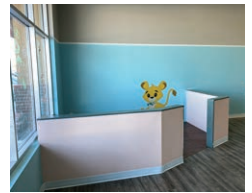
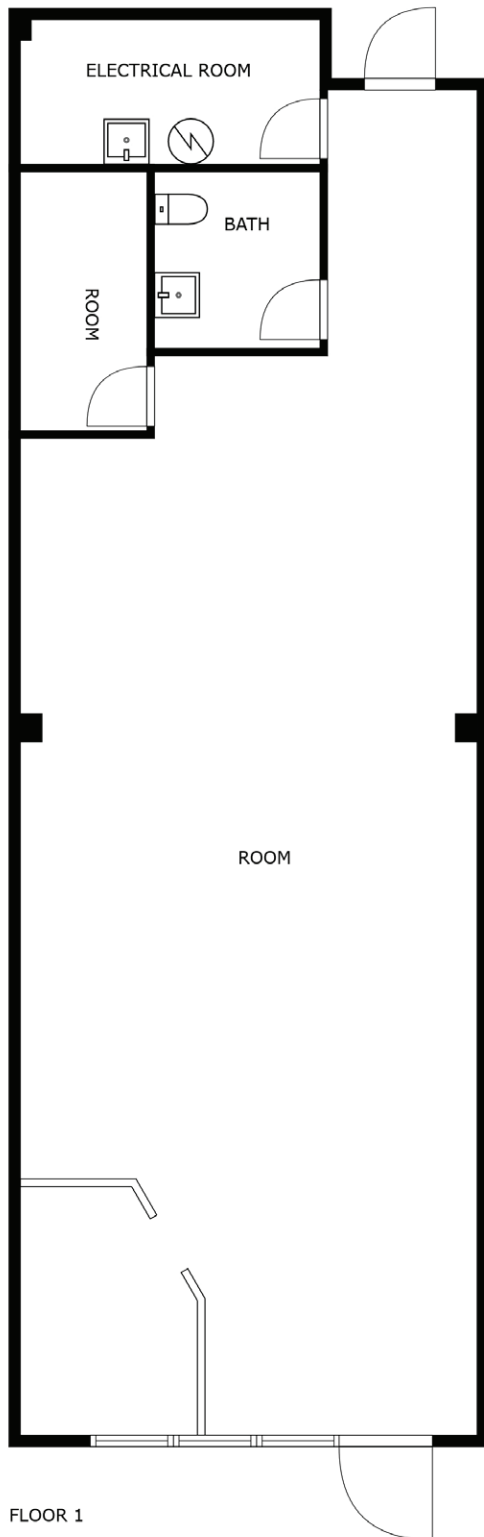
SITE PLAN



SOUTH CREEK CENTER

2511/2553/2603 KIRSTEN LANE S, FARGO, ND 58104

GOLDMARK™
COMMERCIAL REAL ESTATE INC

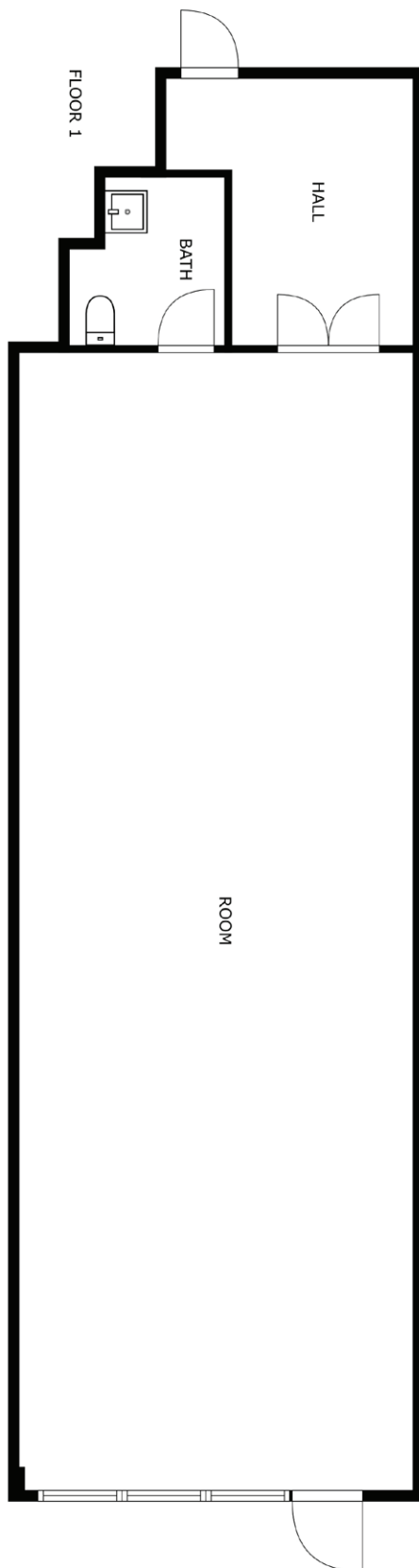


- 1,288 SF
- Former children's salon space
- Sink/plumbing in space
- Private restrooms



SOUTH CREEK CENTER

2511/2553/2603 KIRSTEN LANE S, FARGO, ND 58104



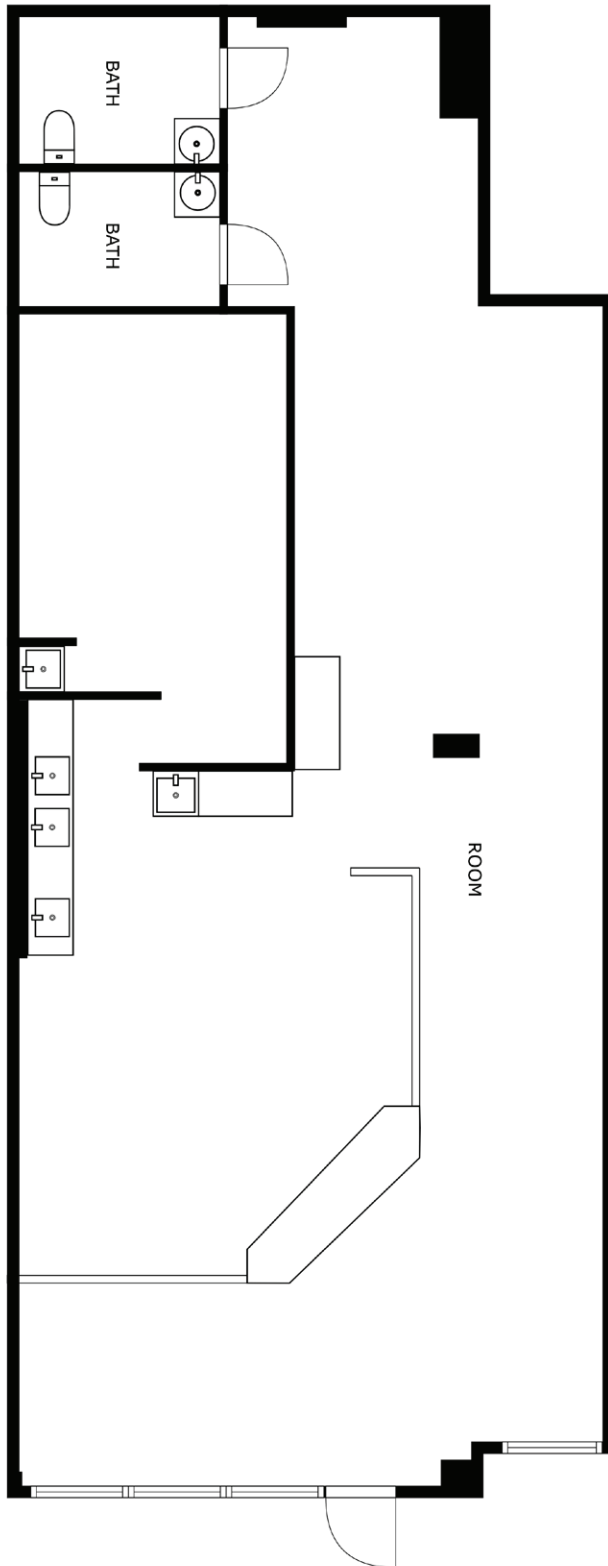
- 1,271 SF
- Open retail space
- Private restroom



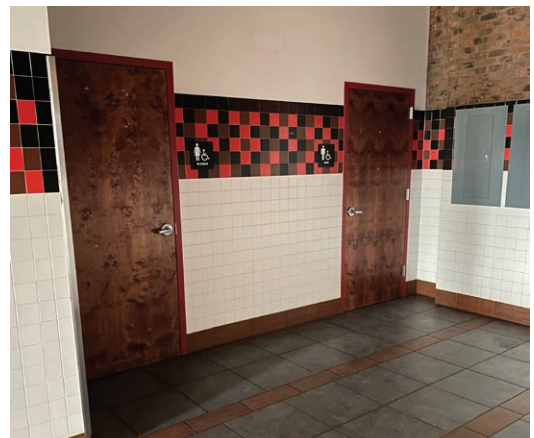
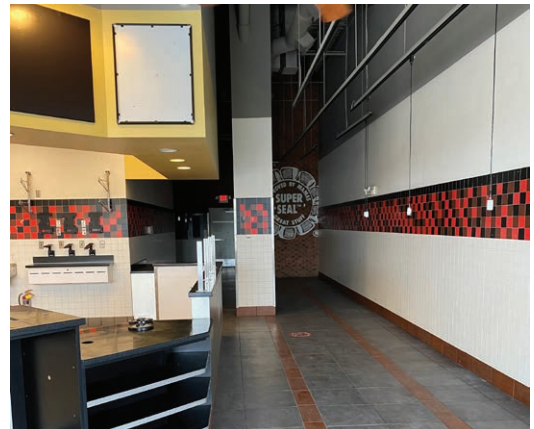
SOUTH CREEK CENTER

2511/2553/2603 KIRSTEN LANE S, FARGO, ND 58104

GOLDMARK™
COMMERCIAL REAL ESTATE INC



- 1,709 SF
- Former restaurant space
- Sink/plumbing in space
- Private restrooms



SOUTH CREEK CENTER

2511/2553/2603 KIRSTEN LANE S, FARGO, ND 58104



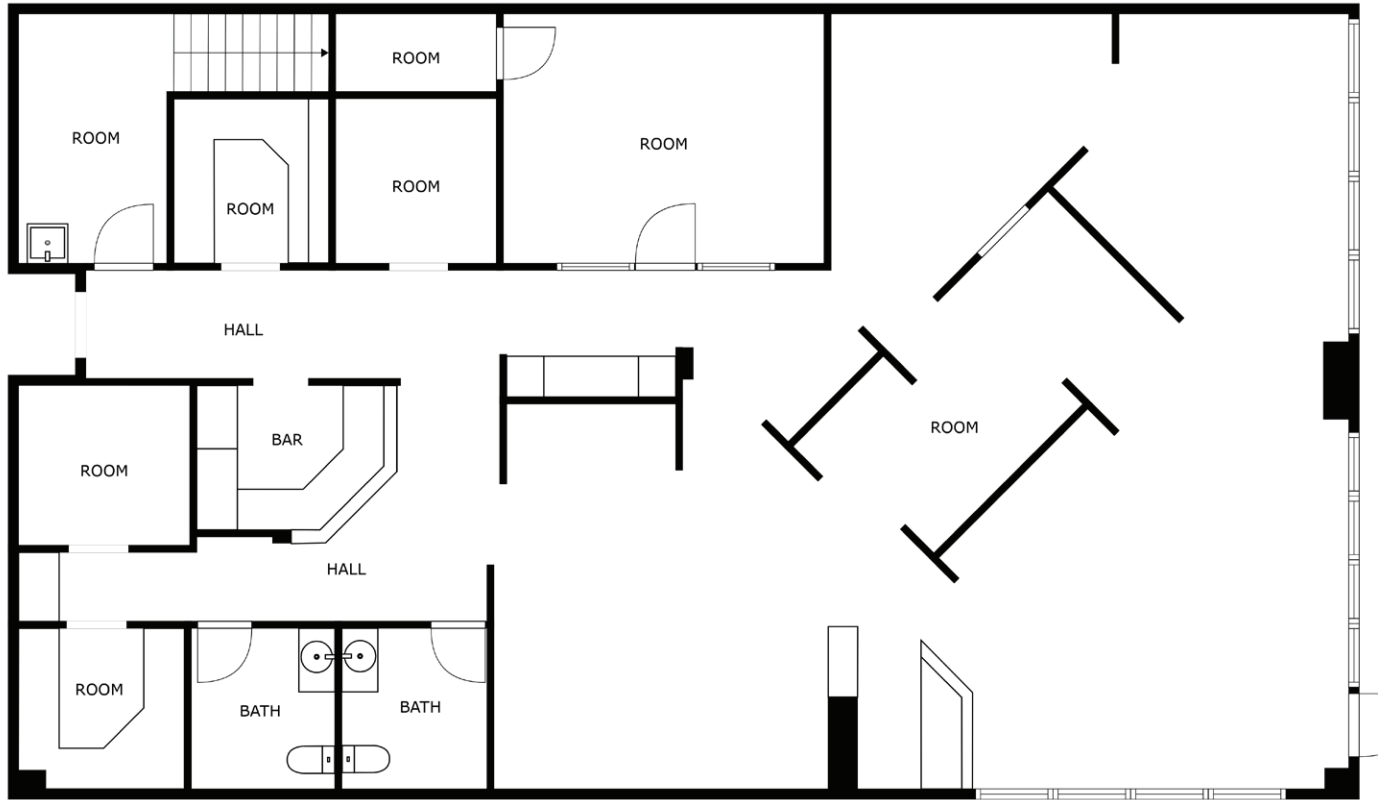
- 1,534 SF
- Offices/breakroom
- Private restroom



SOUTH CREEK CENTER

2511/2553/2603 KIRSTEN LANE S, FARGO, ND 58104

GOLDMARK™
COMMERCIAL REAL ESTATE INC



- 2,610 SF
- Former Showplace Kitchen space
- End cap space
- Showroom area
- Kitchenette
- Private restrooms
- Loft area for storage



SOUTH CREEK CENTER

2511/2553/2603 KIRSTEN LANE S, FARGO, ND 58104

GOLDMARK™
COMMERCIAL REAL ESTATE INC



- 1,435 SF
- Former optical store and clinic
- Showroom area
- Reception desk
- Multiple sinks
- Private restroom

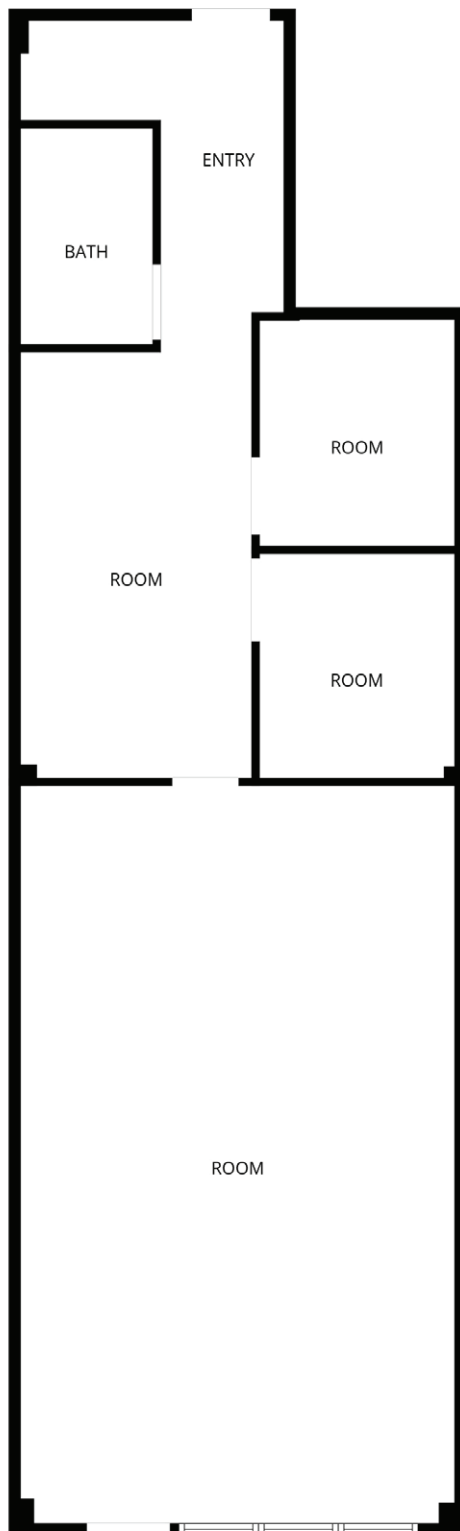


SOUTH CREEK CENTER

2511/2553/2603 KIRSTEN LANE S, FARGO, ND 58104

GOLDMARKTM
COMMERCIAL REAL ESTATE INC

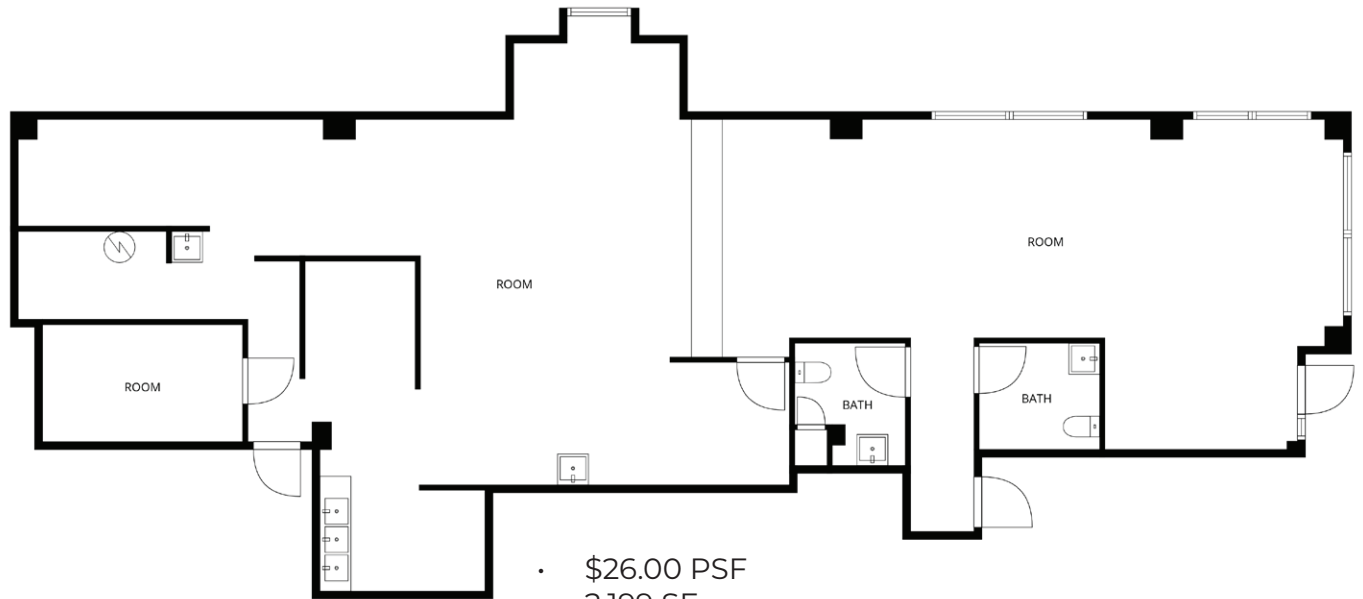
2553 - SUITE 203



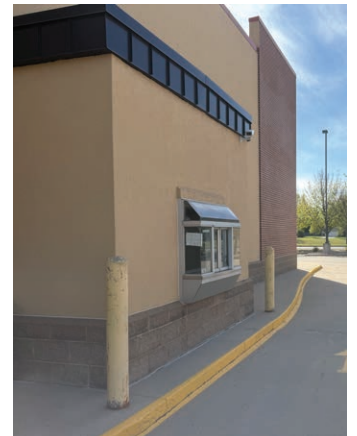
SOUTH CREEK CENTER

2511/2553/2603 KIRSTEN LANE S, FARGO, ND 58104

GOLDMARK™
COMMERCIAL REAL ESTATE INC



- \$26.00 PSF
- 2,199 SF
- End cap restaurant space
- Hood system included
- Drive-thru window and lane
- Private restrooms
- Walk-in cooler



SOUTH CREEK CENTER

2511/2553/2603 KIRSTEN LANE S, FARGO, ND 58104

GOLDMARK™
COMMERCIAL REAL ESTATE INC



- 2,426 SF
- End Cap Retail Space
- Dressing Rooms

