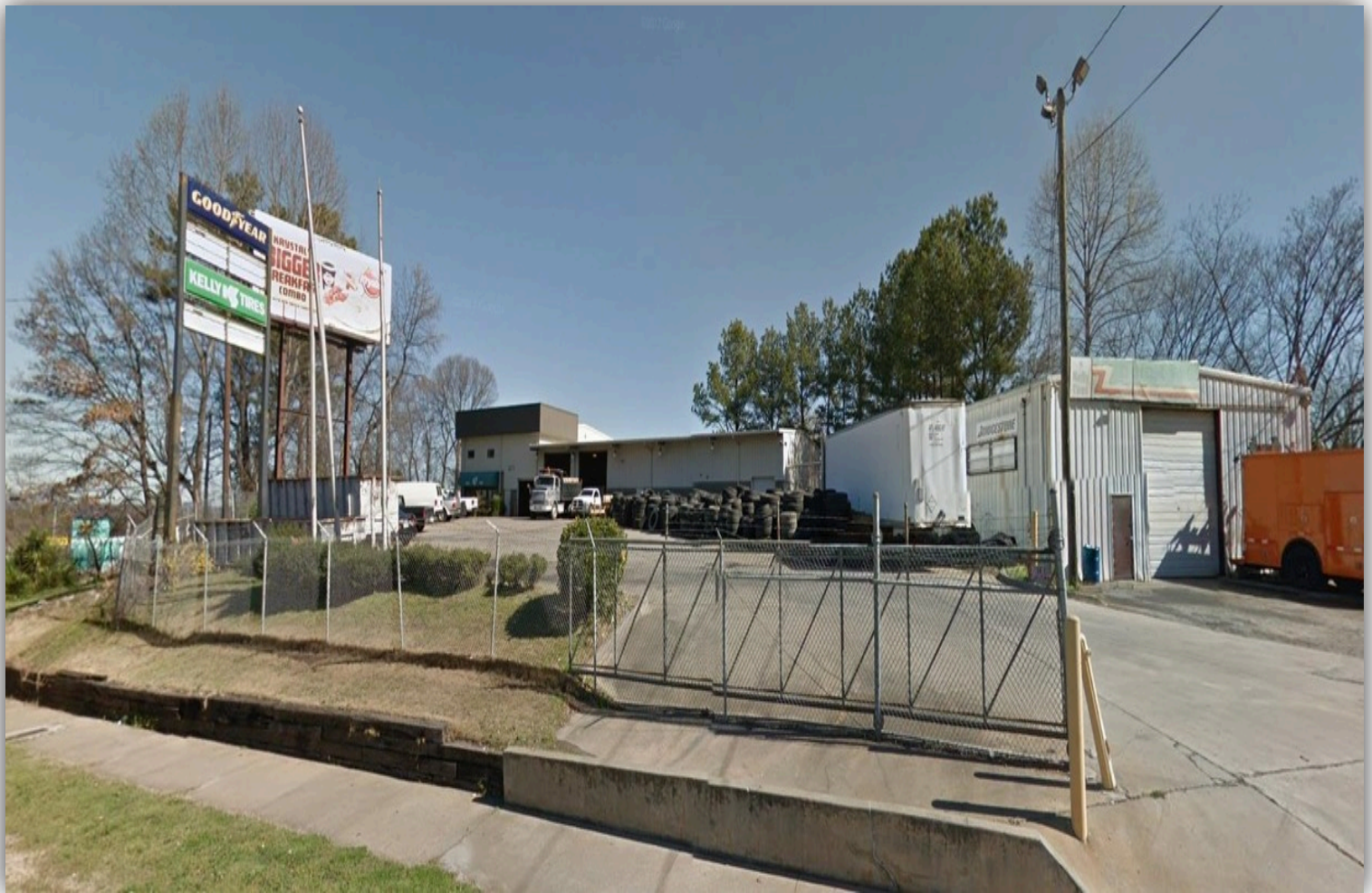


INDUSTRIAL SPACE FOR LEASE

3075 Donald Lee Hollowell Pkwy NW, Atlanta, GA 30318



PROPERTY DETAILS

Building SF:	11,160
Lot Size:	0.84
Dock Doors:	5
Zoning:	C2
Year Built:	1996

PROPERTY SUMMARY

The property at 3075 Donald Lee Hollowell Parkway NW in Atlanta, GA is a commercial space featuring an 11,160 square foot main building and a 3,000 square foot secondary building, situated on a 0.84-acre lot. Constructed in 1996, it is classified as a Class C warehouse with C2 zoning, indicating it is suitable for commercial use. The property is located approximately a quarter-mile from I-285 and is one exit away from I-20, offering convenient access to major highways. Contact our team today for more information!



Visit
Our
Website

Jacob Johnston
(518)651-4716

jacob@ironhornenterprises.com

