

---

# 20015 Diamond Lake S

Rogers, MN 55374

64,800 SF Available



## Contact Us

**James  
DePietro**

+1 952 924 4616

[james.depietro@cbre.com](mailto:james.depietro@cbre.com)

**Austin  
Lovin**

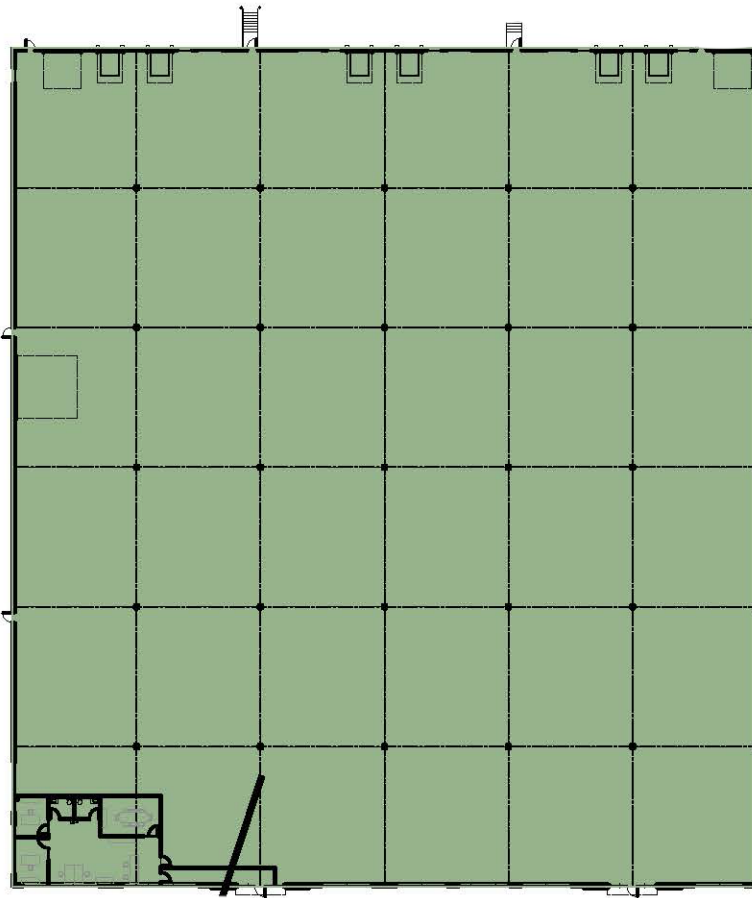
+1 612 336 4255

[austin.lovin@cbre.com](mailto:austin.lovin@cbre.com)

**Dan  
Swartz**

+1 952 924 4652

[dan.swartz@cbre.com](mailto:dan.swartz@cbre.com)



**Power**

+ 875 Amps @ 480V

**Lease Rates**

+ Negotiable

**Est. 2024 CAM/Tax**

+ \$3.55 PSF

**Loading**

+ 6 Docks, 3 Drive-ins

+ 1 Drive-in: 14' x 20'

+ 2 Drive-ins: 12' x 14'

+ Dedicated outside storage available

**Total Building SF**

+ 259,200 SF

**Available SF**

+ 32,400 SF - 64,800 SF

- 1,613 SF Office
- 63,187 SF Warehouse

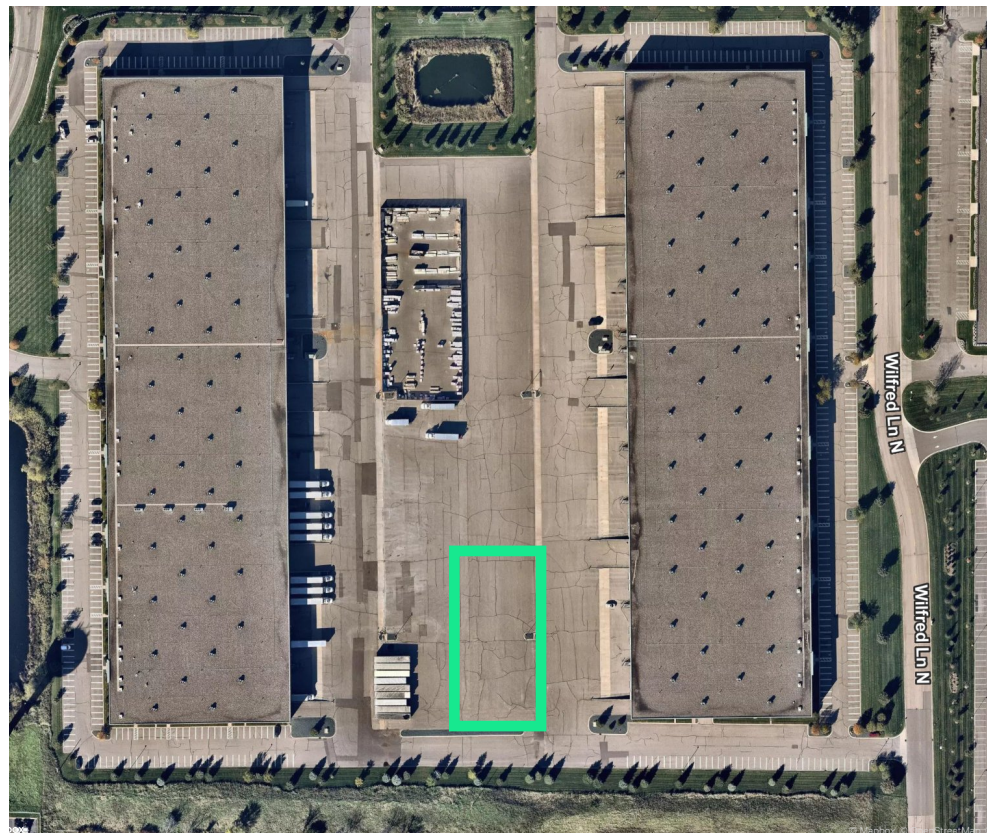
**Year Built**

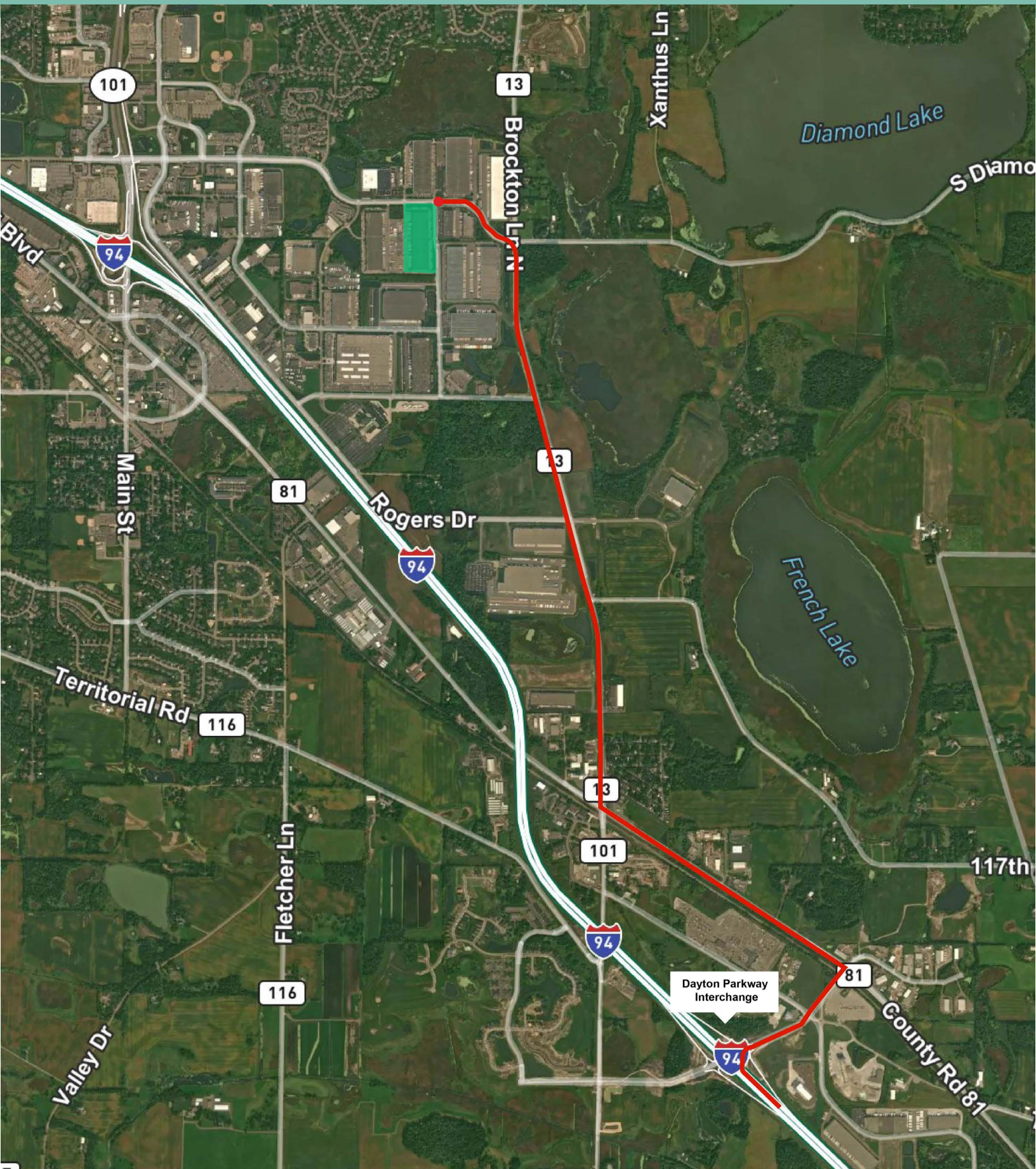
+ 2005

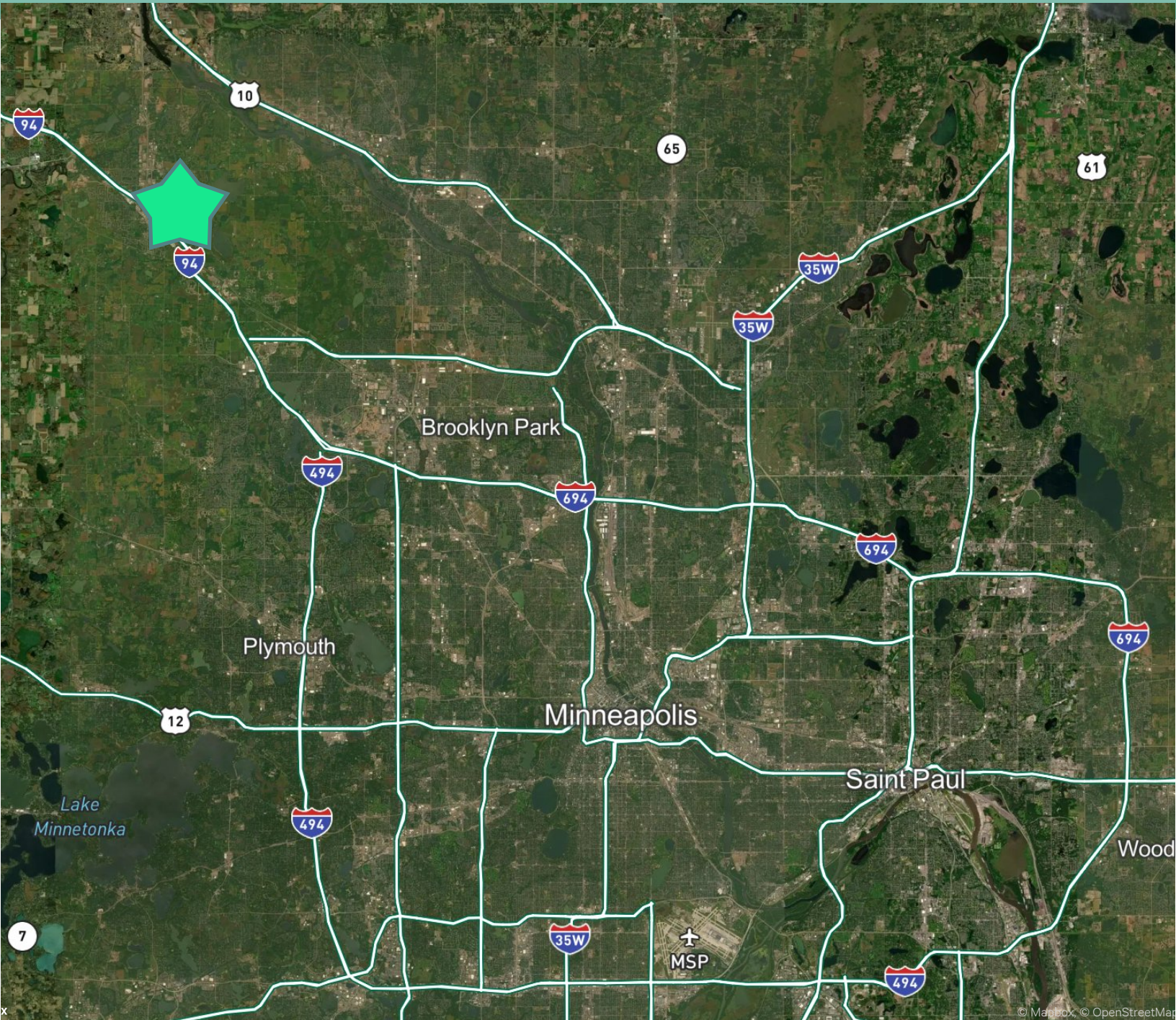
**Clear Height**

+ 32'

**Dedicated Outside Storage Available**







## Contact Us

**James DePietro**

+1 952 924 4616

[james.depietro@cbre.com](mailto:james.depietro@cbre.com)

**Austin Lovin**

+1 612 336 4255

[austin.lovin@cbre.com](mailto:austin.lovin@cbre.com)

**Dan Swartz**

+1 952 924 4652

[dan.swartz@cbre.com](mailto:dan.swartz@cbre.com)