

3851 MODEL COURT SE
KENTWOOD, MICHIGAN

INDUSTRIAL FOR SUBLEASE
8,827 Square Feet Available



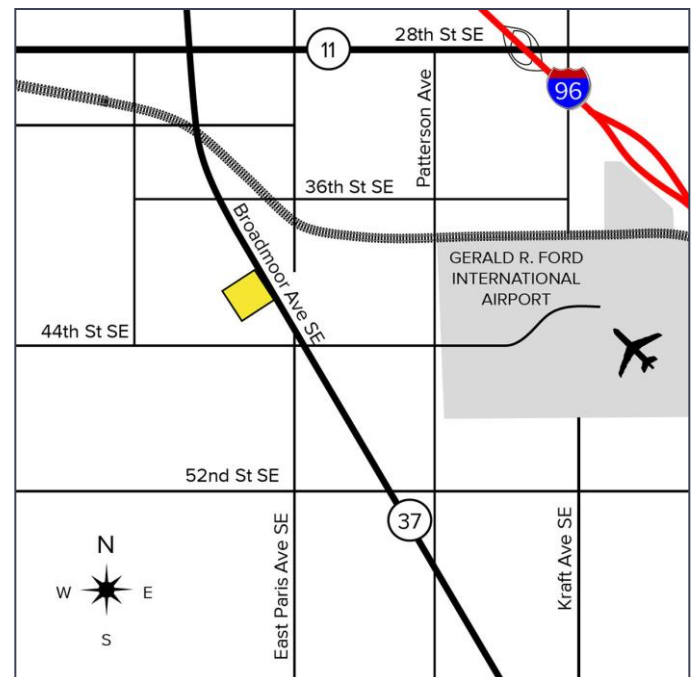
**SIGNATURE
ASSOCIATES**
KNOW SIGNATURE | KNOW RESULTS

DISTRIBUTION SPACE



PROPERTY FEATURES

- 49,574 total square foot building
- 8,827 square feet available
- 850 office square feet
- Located on 4.88 acres
- (3) Loading docks with levelers
- (1) Overhead door (12' x 14')
- 26'9" Ceiling height
- Built in 2001; Renovated in 2023
- 400 Amps, 480 Volts, 3-phase power
- Zoned I-1
- Security system in place
- Sprinklers
- Lease Rate: \$12.00/sf NNN (\$8,827/mo)



For more information, please contact:

JOE RIZQALLAH
(616) 822 6310

jrizzqallah@signatureassociates.com

PETER CACHEY
(616) 259 6386

pcachey@signatureassociates.com

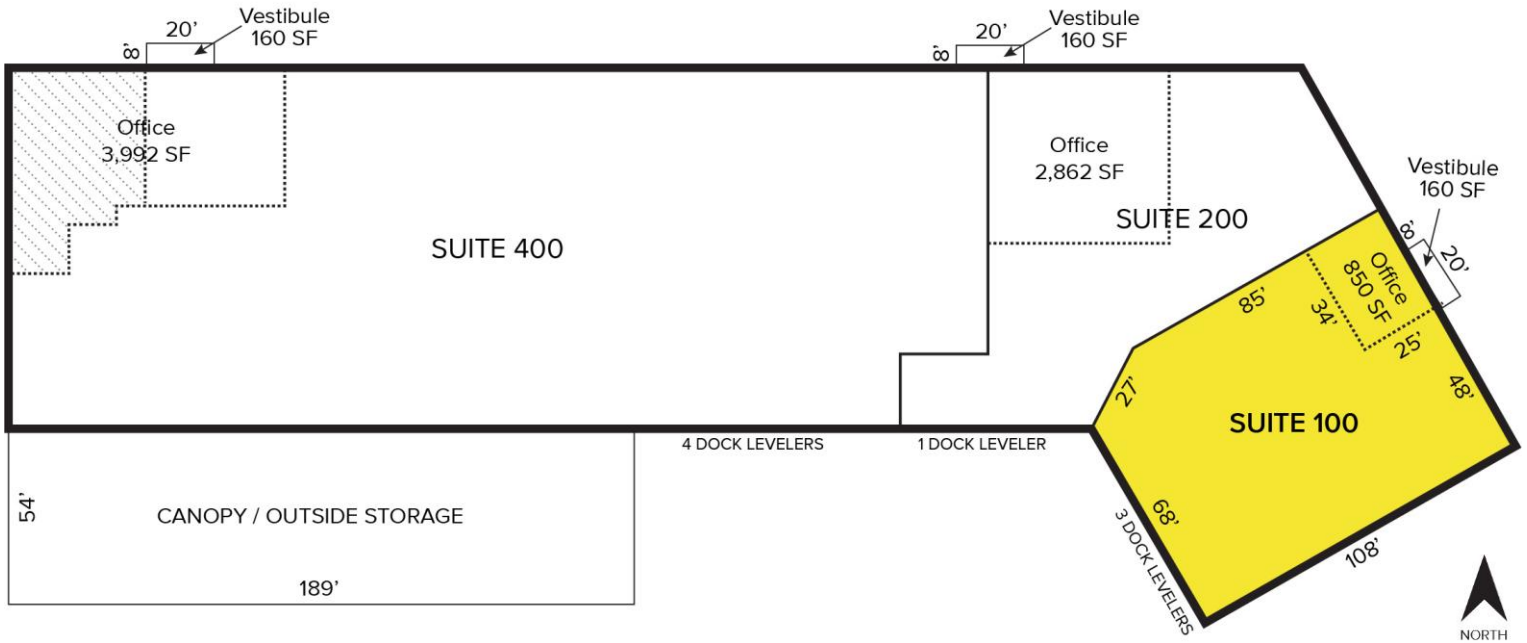
SIGNATURE ASSOCIATES
1188 East Paris Ave SE, Suite 220
Grand Rapids, MI 49546
www.signatureassociates.com

3851 Model Court SE - Kentwood, Michigan

Industrial for Sublease

**8,827
Square Feet
AVAILABLE**

Floor Plan



Aerial



For more information, please contact:

JOE RIZQALLAH
(616) 822 6310
jrizqallah@signatureassociates.com

PETER CACHEY
(616) 259 6386
pcachey@signatureassociates.com

SIGNATURE ASSOCIATES
1188 East Paris Ave SE, Suite 220
Grand Rapids, MI 49546
www.signatureassociates.com