

ANAHEIM CONCOURSE

1204 N MILLER ST, SUITE C, ANAHEIM, CA



±45,114 SF
FOR LEASE



BUILDING FEATURES



Part of a Larger
151,181 SF Building



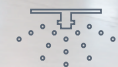
±45,114 SF
Total Available



LEED Certification
(Efficient Occupancy Costs)



32' Minimum Warehouse
Clearance



ESFR
Sprinkler System



5 Dock-High Doors
(9'x10')



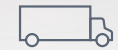
1 Grade Level Door
(12'x14')



1.5:1
Parking Ratio



100% Concrete
Truck Court and Car Parking



Fully Secured
194' Truck Court



LED High Bay Warehouse
Lighting Fixtures



800 Amps (expandable),
277/480 Volts, 3-Phase,
4-Wire Power

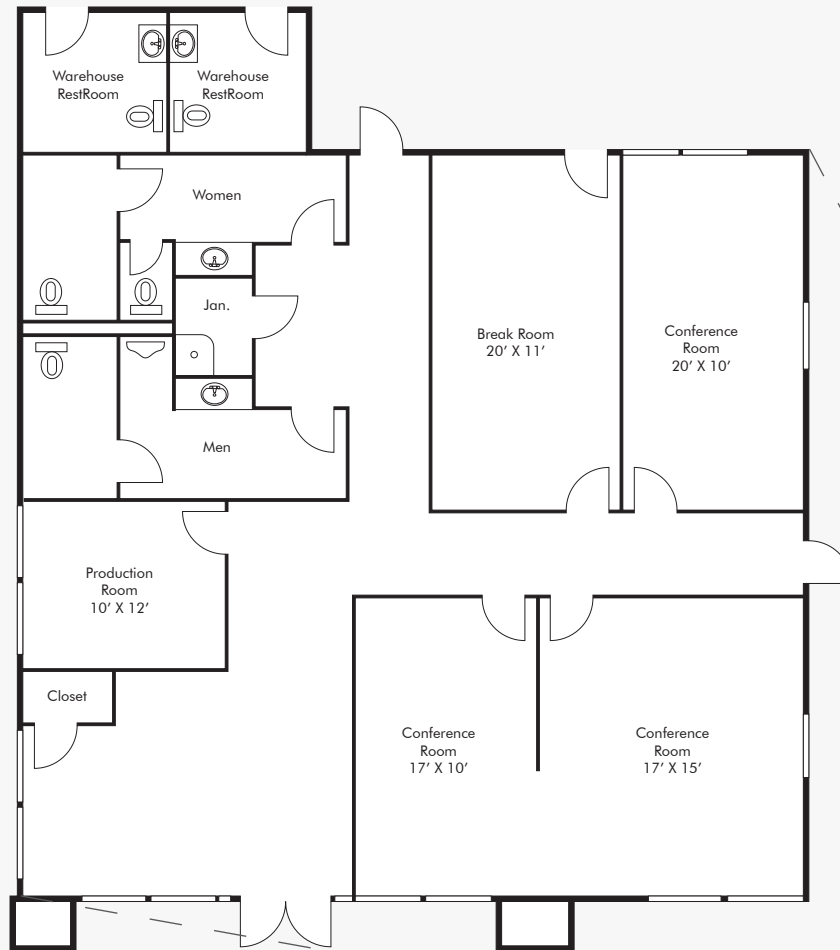


Building/Monument Sign
Available

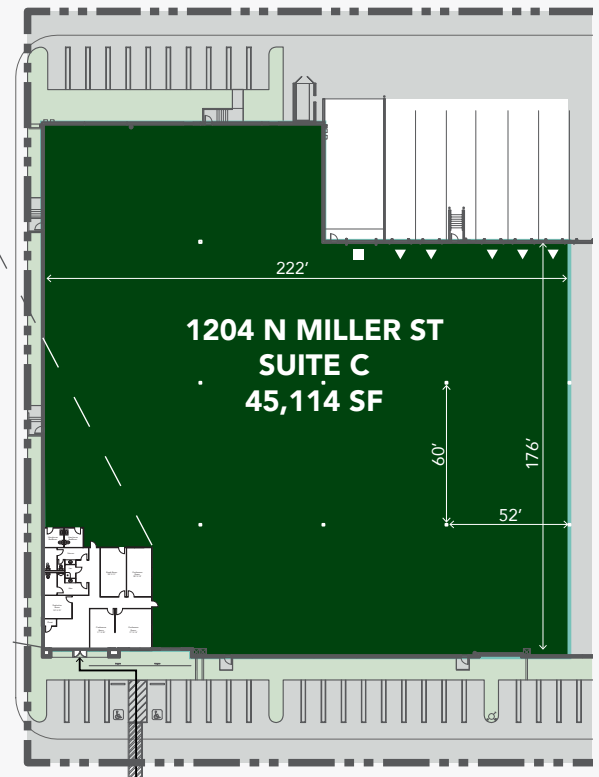


Direct Access to Major
Freeways
(91, 57, 55, 5 & 241)

SITE PLAN/ OFFICE FLOOR PLAN



- ▲ DOCK HIGH DOORS
- DRIVE IN DOORS



KEY MAP



LOCATION MAP



45,114 SF AVAILABLE
1204 N Miller St, Suite C

FOR MORE INFORMATION, PLEASE CONTACT:

Brad Bierbaum
Senior Vice President
+1 714 371 9210
brad.bierbaum@cbre.com
Lic. 00996170

Ryan Peterson
Senior Vice President
+1 714 371 9212
ryan.peterson@cbre.com
Lic. 01336025

CBRE, Inc.
Broker Lic. 00409987
18575 Jamboree Road
Suite 600
Irvine, CA 92612

© 2025 CBRE, Inc. All rights reserved. This information has been obtained from sources believed reliable but has not been verified for accuracy or completeness. You should conduct a careful, independent investigation of the property and verify all information. Any reliance on this information is solely at your own risk. CBRE and the CBRE logo are service marks of CBRE, Inc. All other marks displayed on this document are the property of their respective owners, and the use of such logos does not imply any affiliation with or endorsement of CBRE. Photos herein are the property of their respective owners. Use of these images without the express written consent of the owner is prohibited.