

OFFICE AND OFFICE FLEX SPACES FOR LEASE



1750 N. FLORIDA MANGO RD., WPB, FL. 33409

FEATURES:

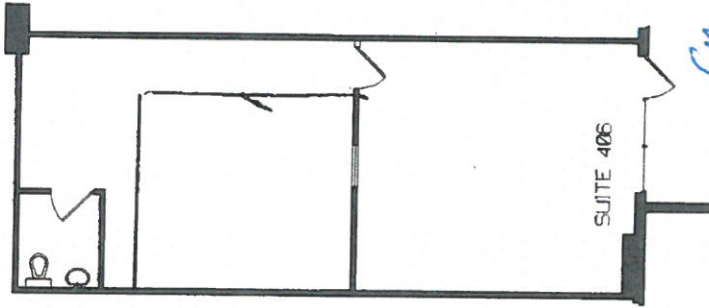
- Located between Belvedere Rd. and Okeechobee Blvd. on N. Florida Mango Rd.
- Minutes from I-95 and Palm Beach International Airport.
- One story campus style offices and office/warehouse spaces (no loss factor).
- Abundant surface parking convenient to front door (3.5 spaces/1,000sq.ft.).
- Immediate occupancy. 24/7 access.
- Office spaces available: 824 SF, 1,232 SF, 2,238 SF, 2,629 SF
- Office/Warehouse spaces available: 1,350 SF
- Comcast & AT&T available to the unit.
- Lease Rates: **\$16.50+ \$7.73cam + sales tax, tenant pays own electric, janitorial, data.**

For additional information or to schedule an appointment, contact:

Henry Gluckstern, Senior Associate
ComNet Realty, Inc.
Commercial Real Estate Solutions

Phone (561) 999-0006, ext 107, fax (561) 999-0007,
henryg@comnetrealty.com

All information is subject to errors, omission or withdrawal at anytime without notice.



824 SF

1750 N FLORIDA MANGO RD.
SUITE 406

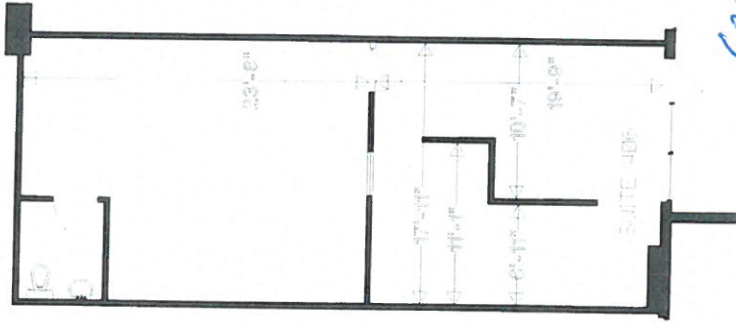


1" = 6' 12"
SCALE

WEST PALM BEACH, FL
AS MEASURED JUNE 01, 2009



MEASURE MASTERS
Floor Planning & Site Print Service
800-709-3332



824sf

1750 N. FLORIDA MANAGED FC
SUITE 101



SCALE

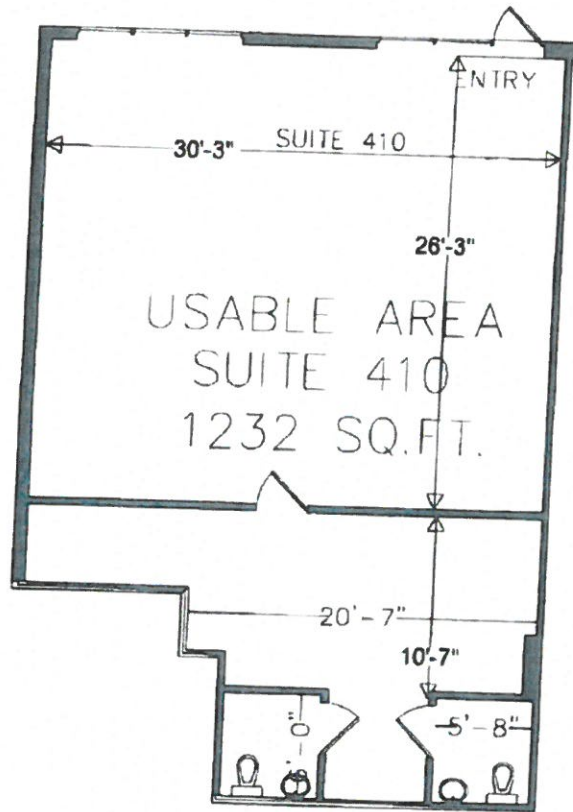
WEST PALM BEACH, FL

AS MEASURED JUNE 21 2009

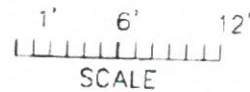


MEASURE LIFE MASTERS
Floor Planning & Blueprints
800-706-3332

Exhibit A



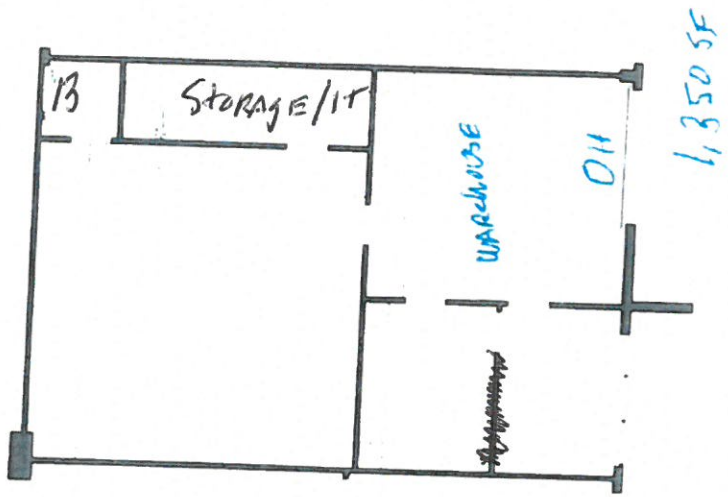
1750 N FLORIDA MANGO RD.
SUITE 409

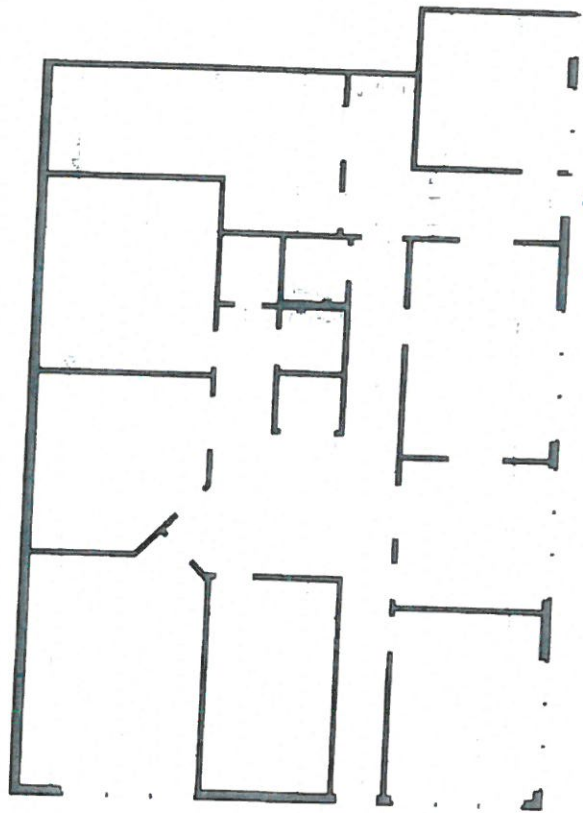


WEST PALM BEACH, FL
AS PROPOSED APRIL 20, 2017



MEASURE MASTERS
800-709-3332



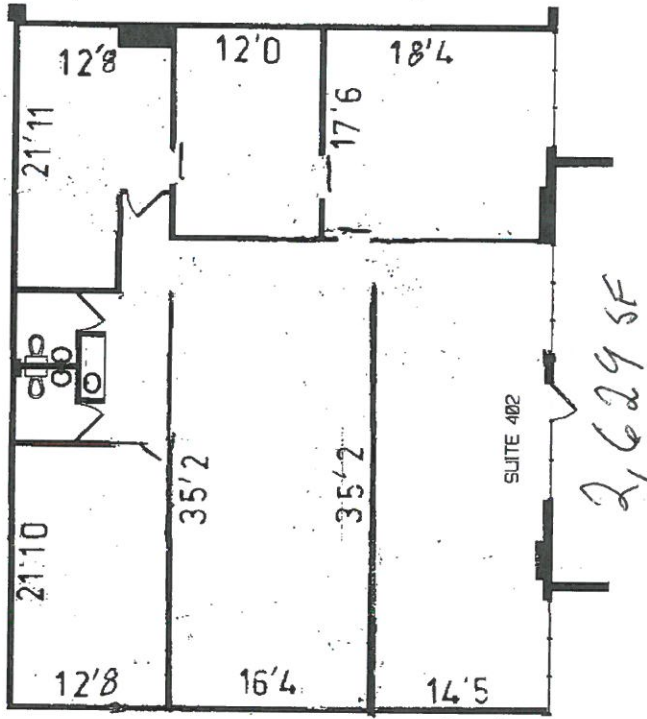


2,238 SF

entry →



Exhibit A
Suite 402



1" = 6' 12"
SCALE

1750 N FLORIDA MANGO RD.
SUITE 402

WEST PALM BEACH, FL
AS MEASURED JUNE 01, 2009



MEASURE MASTERS
Flooring, Carpentry, Drywall, Painting, Siding, Roofing
800-778-3332