



22438 WOODWARD AVENUE
FERNDALE • MI 48220

CONTACT

MATTHEW ROMAN
248 763 7466
mattroman@gmail.com

DAVID ALBERT
305 519 4401
david.albert65@gmail.com

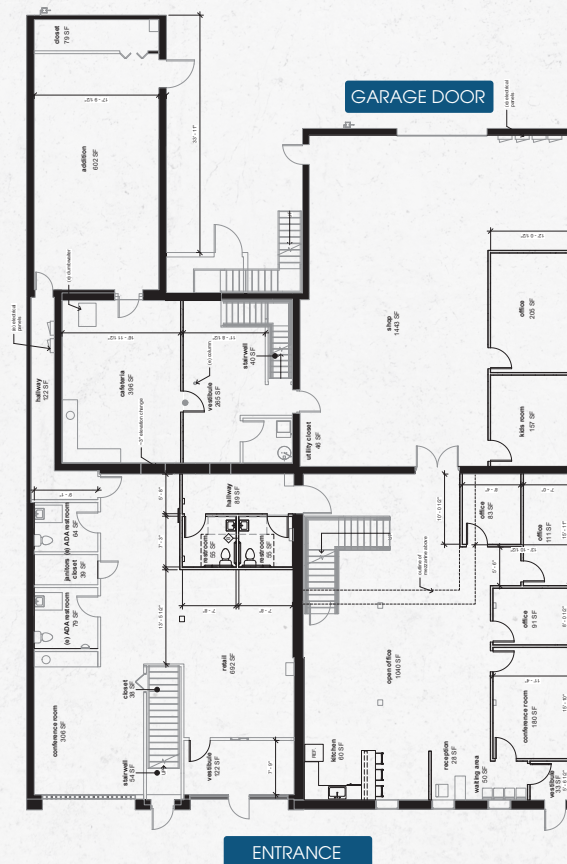
FOR LEASE
2,500-12,000 SF

OFFICE / TECH / STUDIO / RETAIL

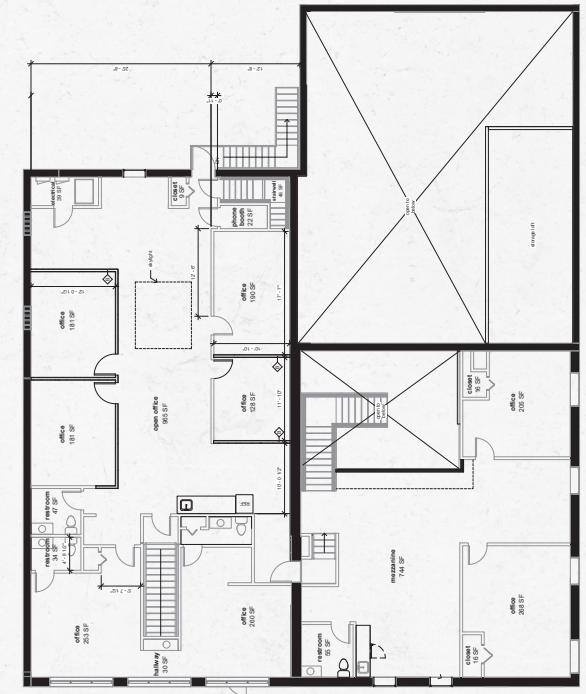
PROPERTY FEATURES

- + Individual offices and group offices available
- + Woodward Avenue frontage
- + Signage available
- + On-site parking
- + Within blocks of over 60 unique restaurants and retailers
- + Immediate occupancy

FLOOR PLAN

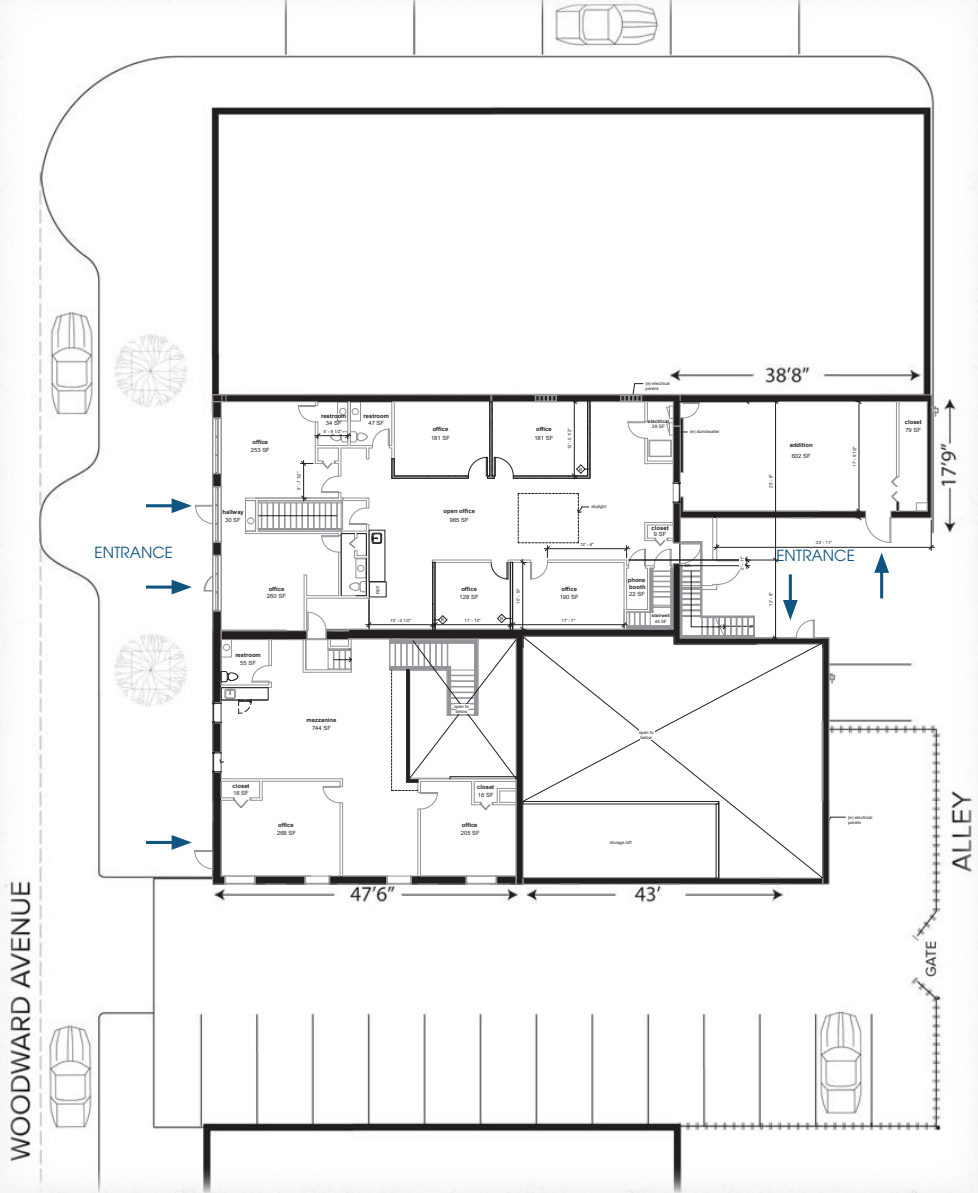


FIRST FLOOR



SECOND FLOOR

PROPERTY SITE PLAN



LOCATION HIGHLIGHTS

- + Proximity to downtown Ferndale amenities
- + Easy access to I-696 & I-75
- + Zoned B-1
- + Retail /Office /Tech /Studio

AERIAL VIEW

