

FOR LEASE

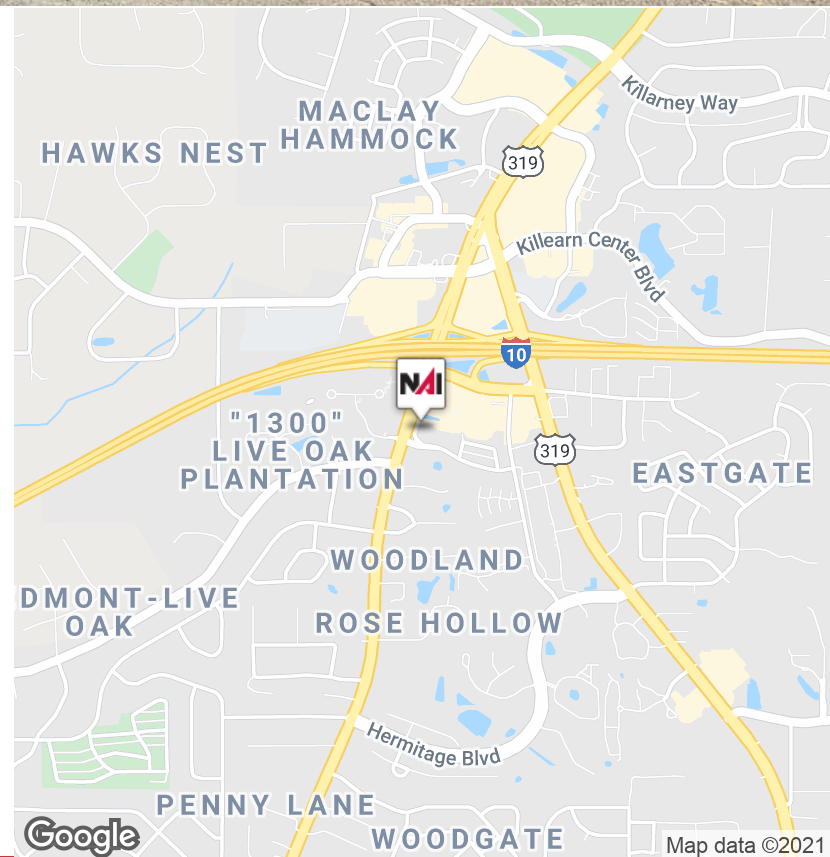
1300 Metropolitan Blvd Tallahassee, FL 32308



Office | 4,096 SF

Suite is located on the second floor of the beautifully renovated Tallahassee National Bank Building. New Lobby, Elevator, Restrooms all completed in 2021. New floors and paint are planned for the space. The suite offers a large open area for various uses, 9 private offices, 1 break room, Men's and Women's private bathrooms and plenty of storage. There is elevator access as well as an ADA bathroom located in the suite. Perfect for an engineering office, law firm, insurance office and much more.

Lease Rate: \$20.00 SF/Yr



✉ **John W. McNeill, SIOR**
+1 850 251 5504
jmcneill@talcor.com

No Warranty Or Representation, Express Or Implied, Is Made As To The Accuracy Of The Information Contained Herein, And The Same Is Submitted Subject To Errors, Omissions, Change Of Price, Rental Or Other Conditions, Prior Sale, Lease Or Financing, Or Withdrawal Without Notice, And Of Any Special Listing Conditions Imposed By Our Principals. No Warranties Or Representations Are Made As To The Condition Of The Property Or Any Hazards Contained Therein Are Any To Be Implied.



FOR LEASE

1300 Metropolitan Blvd Tallahassee, FL 32308



✉ **John W. McNeill, SIOR**
+1 850 251 5504
jmcneill@talcor.com

No Warranty Or Representation, Express Or Implied, Is Made As To The Accuracy Of The Information Contained Herein, And The Same Is Submitted Subject To Errors, Omissions, Change Of Price, Rental Or Other Conditions, Prior Sale, Lease Or Financing, Or Withdrawal Without Notice, And Of Any Special Listing Conditions Imposed By Our Principals No Warranties Or Representations Are Made As To The Condition Of The Property Or Any Hazards Contained Therein Are Any To Be Implied.

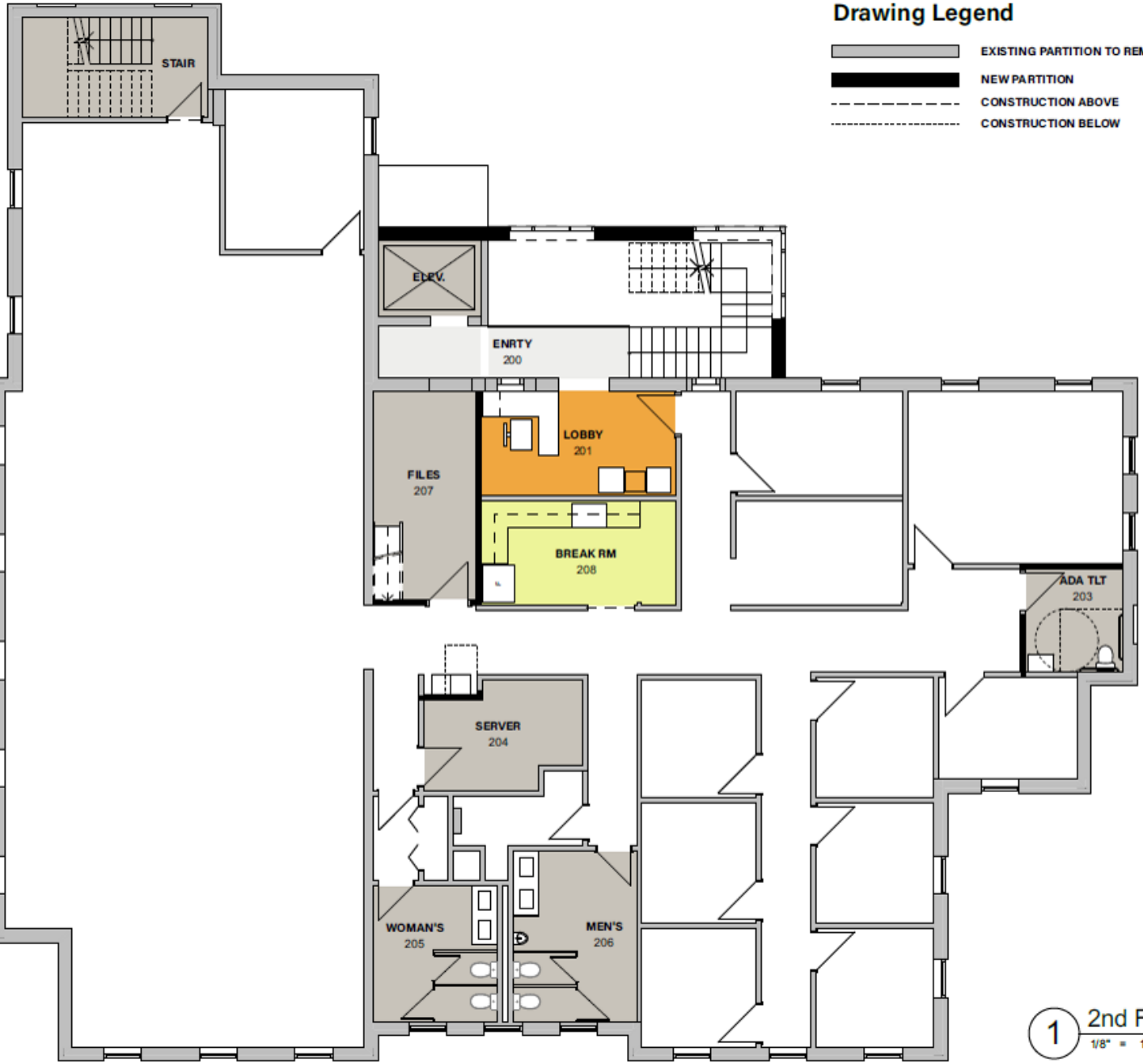
NAITALCOR

FOR LEASE

1300 Metropolitan Blvd Tallahassee, FL 32308

Drawing Legend

- EXISTING PARTITION TO REMAIN
- NEW PARTITION
- CONSTRUCTION ABOVE
- CONSTRUCTION BELOW



1 2nd Floor
1/8" = 1'-0"

FOR LEASE

1300 Metropolitan Blvd Tallahassee, FL 32308

