

FOR LEASE

8870

AUBURN FOLSOM ROAD  
GRANITE BAY, CA 95746



CBRE

FOR LEASE

# 8870

**AUBURN FOLSOM ROAD**  
GRANITE BAY, CA 95746

## PROPERTY HIGHLIGHTS

- Suite B: ±2,311 RSF
- \$2.00 PSF/month, modified gross
- The suite has a spacious reception area, restrooms, break area and several private rooms
- Retail building
- Located near the busy intersection of Douglas Boulevard and Auburn Folsom Road
- Easy access to Roseville and Folsom, close to many amenities such as shopping, dining and banking services



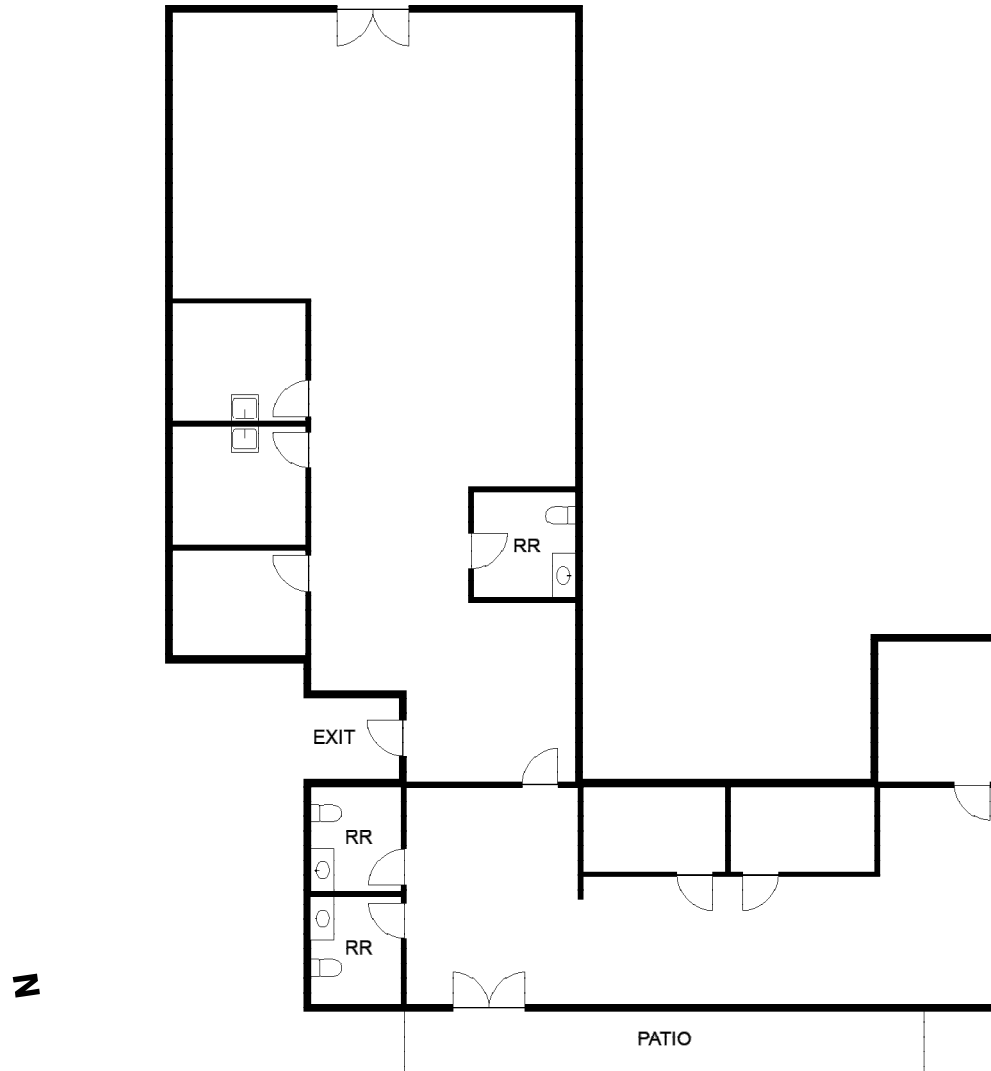
NOT TO SCALE ALL DIMENSIONS ARE APPROXIMATE

FOR LEASE

# 8870

AUBURN FOLSOM ROAD  
GRANITE BAY, CA 95746

## *Suite B Floor Plan*



FOR LEASE

# 8870

**AUBURN FOLSOM ROAD**  
GRANITE BAY, CA 95746

**PLEASE CONTACT:**

**KEVIN LARSCHIED**

Executive Vice President  
+1 916 781 4818  
kevin.larscheid@cbre.com  
Lic. 00816790

**HEATH KASTNER**

Senior Vice President  
+1 916 446 8795  
heath.kastner@cbre.com  
Lic. 01301753

**SCOTT RUSH**

First Vice President  
+1 916 781 4802  
scott.rush@cbre.com  
Lic. 01228497

**CBRE, INC.**

1512 Eureka Road, Ste 100  
Roseville, CA 95661  
www.cbre.us/roseville  
Lic. 00409987

© 2024 CBRE, Inc. All rights reserved. This information has been obtained from sources believed reliable, but has not been verified for accuracy or completeness. You should conduct a careful, independent investigation of the property and verify all information. Any reliance on this information is solely at your own risk. CBRE and the CBRE logo are service marks of CBRE, Inc. All other marks displayed on this document are the property of their respective owners, and the use of such logos does not imply any affiliation with or endorsement of CBRE. Photos herein are the property of their respective owners. Use of these images without the express written consent of the owner is prohibited.

This memorandum contains information pertaining to the estimated costs and projected operation of the Property. CBRE, Inc. ("CBRE") has prepared this memorandum primarily from material supplied by the Sponsor and other sources deemed reliable. CBRE makes no guarantee, warranty, or representation about the information contained in this memorandum. Any opinions or estimates contained in this report represent the judgment of CBRE as of the date of this memorandum and are subject to change without notice. Rates and analyses are based on certain assumptions with respect to significant factors that may prove not to be as assumed. You should understand the assumptions and evaluate whether they are appropriate for your purposes. 120624