

Wilton 372

3,041-41,179 RSF available

New Medical Office Opportunity
372 Danbury Road
Wilton, CT 06897



- > **Recently approved parking expansion**
- > First-class ownership and management
- > Fully-built units available for immediate occupancy
- > Turn-key design
- > Generous window/interior ratio
- > 24/7 cardkey building access

Sean McDonnell

Managing Director
Healthcare Lead

+1 203 399 1395

SeanP.McDonnell@jll.com

Ian Ceppos

Executive Vice President

+1 914 806 7672

Ian.Ceppos@jll.com



Fitness Center

With showers and
changing area



Excellent Access

To Merritt Parkway and
I-95



Conference Room



Wilton 372

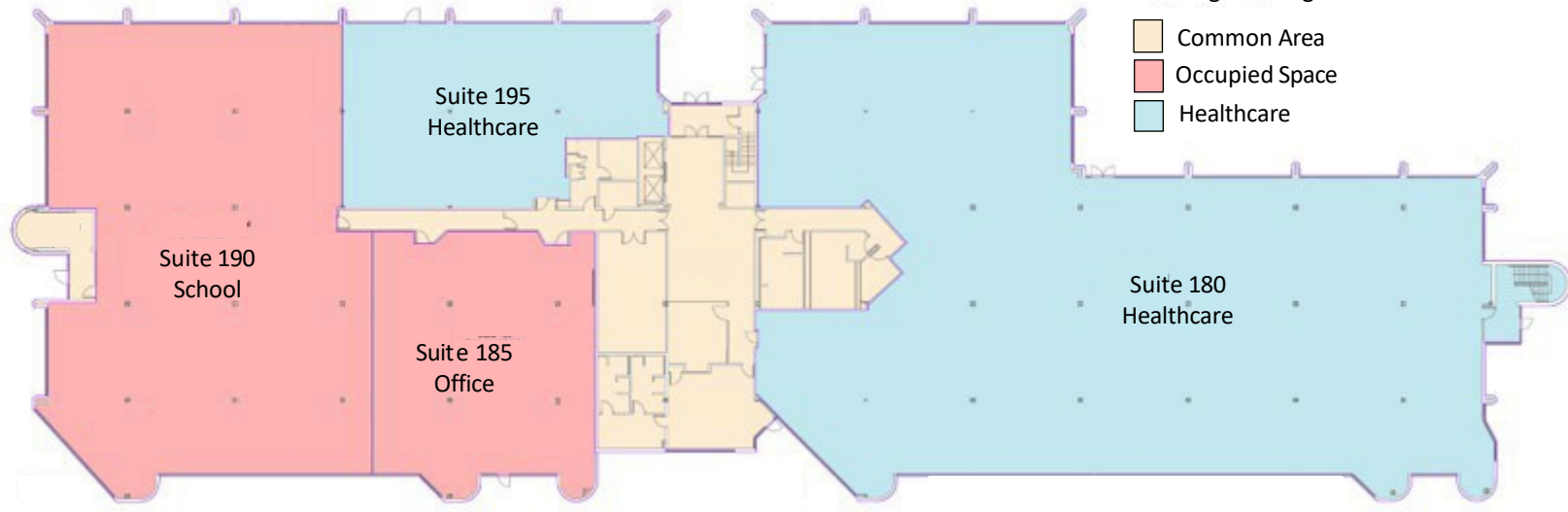
372 Danbury Road, Wilton, CT 06897

3,041-41,179 RSF available

1st Floor 43,296 SF

Building Area Legend

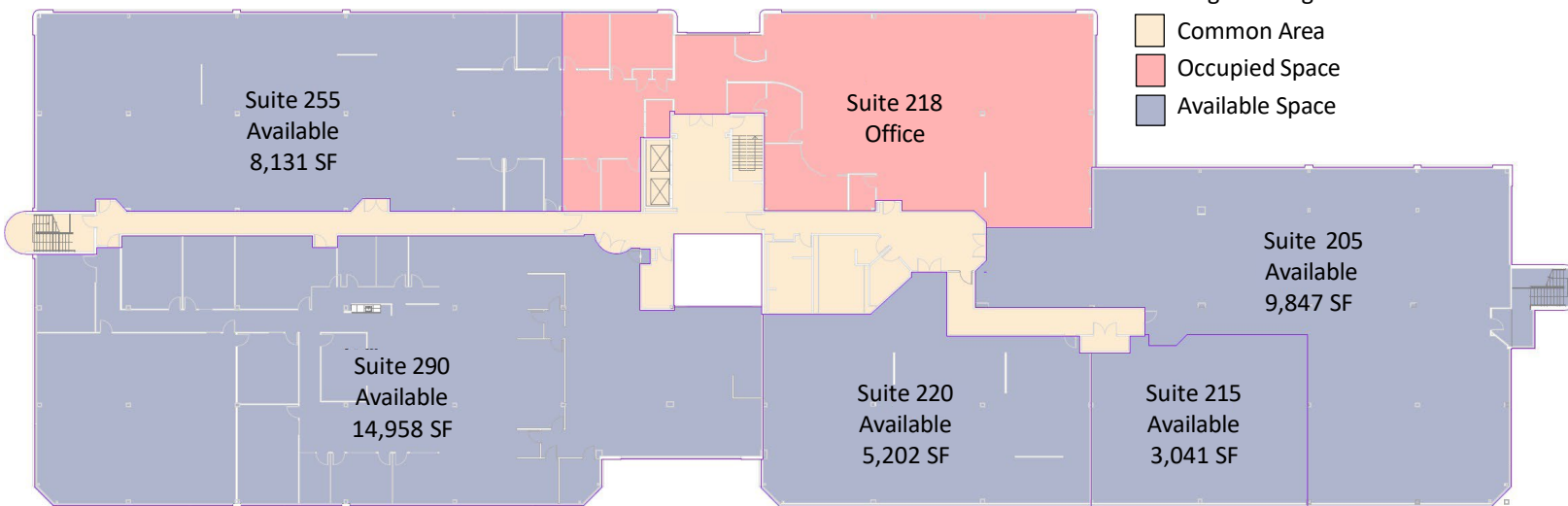
- Common Area
- Occupied Space
- Healthcare



2nd Floor 49,146 SF

Building Area Legend

- Common Area
- Occupied Space
- Available Space



REGULATORY
REVIEW
SUBMISSION

**Grossman
Companies, Inc.**

Wilton,
Connecticut



NAME	DATE	DESCRIPTION
PURCH BQ1	05/01/00	
DATE	06/20/00	
FILE	61001-01-C-100-MTE	2w
DRAIN BY	EWL	
OFFICER/INCHARGE BY	EWL	
APPROVED BY	TWB	

SITE PLAN

C-101

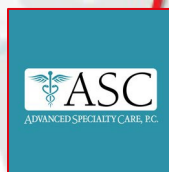


Ridgefield



Gilbert Corners

South Wilton



OLD HILL

Westport

Cranbury

Norwalk

New Canaan

- > Excellent access to Route 7
- > .9 miles to Cannondale and Wilton Station Commuter Rail
- > Great proximity to numerous amenities

Sean McDonnell
Managing Director
Healthcare Lead

+1 203 399 1395
SeanP.McDonnell@jll.com



Ian Ceppos
Executive Vice President

+1 914 806 7672
Ian.Ceppos@jll.com