

CHARCOT INDUSTRIAL PARK I



FLEX SPACE AVAILABLE

721-751 CHARCOT, 2023-2037 O'TOOLE, 2142-2190 PARAGON | SAN JOSE | CA | 95131

FOR MORE INFORMATION:

JOE KELLY
408.314.7710
joe.kelly@nrmk.com
CA RE Lic. 01420963

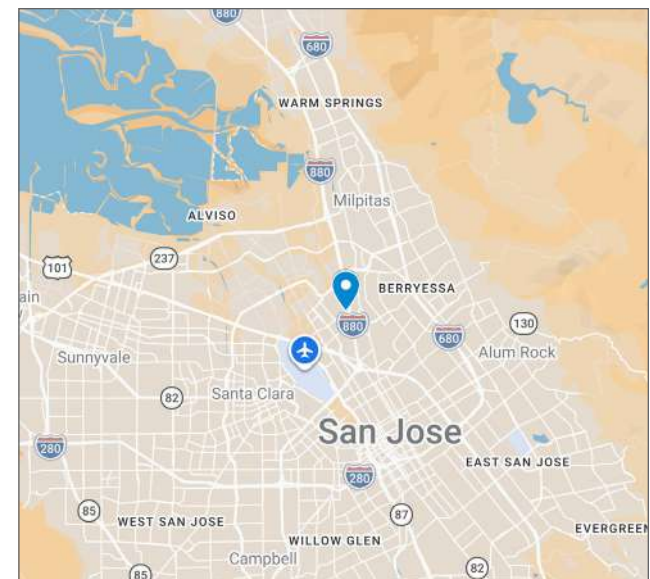
GRANT MEYLAN
408.987.4153
grant.meylan@nrmk.com
CA RE Lic. 02078953

NEWMARK
3155 Olsen Avenue, Suite 575
San Jose, CA 95117
www.nrmk.com



PROPERTY FEATURES

- ±164,089 Total Square Feet
- Suite Sizes Range From ±5,305-22,500 SF
- Flexible Industrial Suites for R&D, Manufacturing & Distribution
- 2/1,000 SF Parking Ratio
- Proximity to San Jose International Airport and excellent access to I-880 & Highway 101

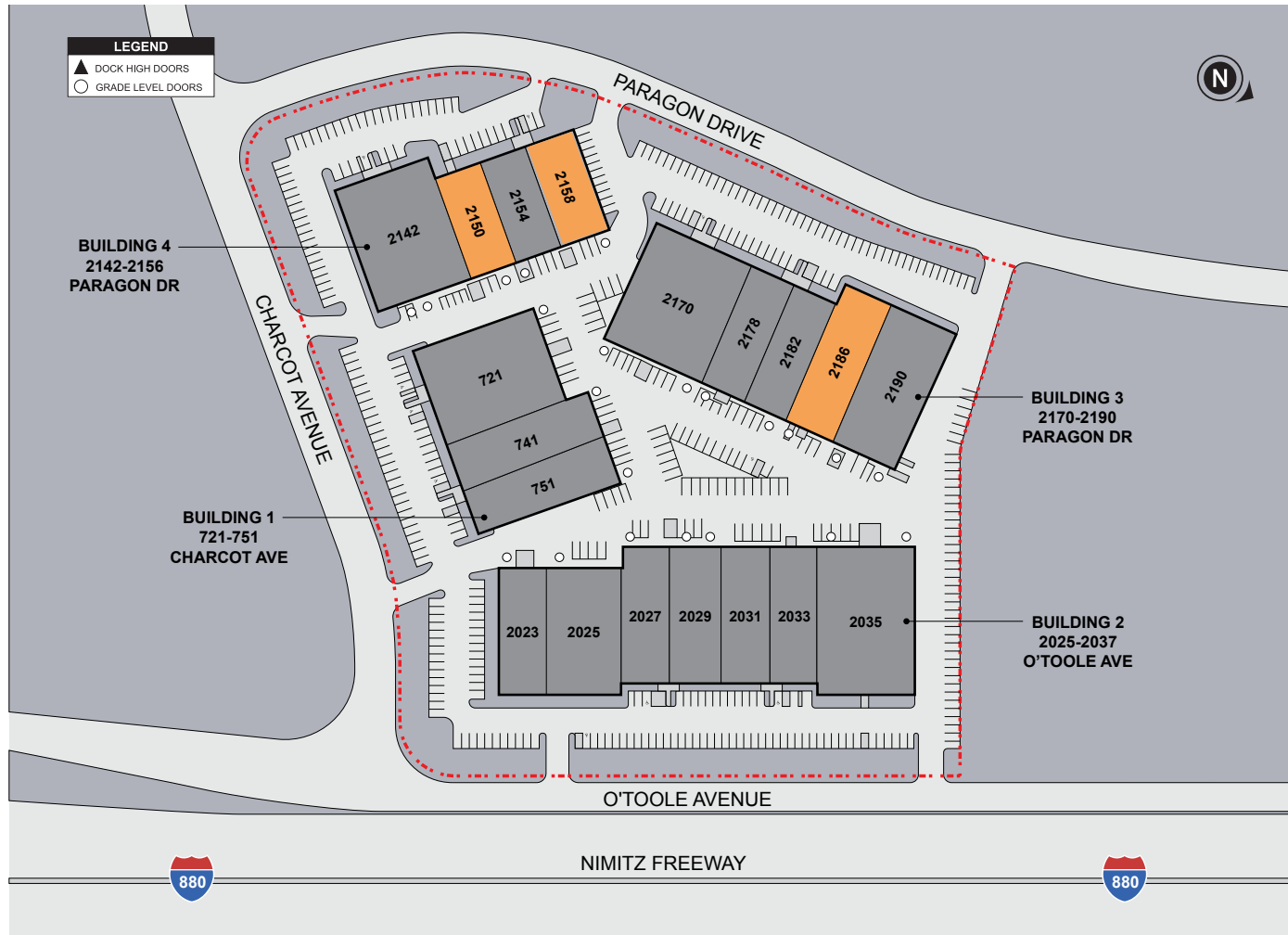


The information contained herein is believed to be accurate but is not warranted as to its accuracy and may change or be updated without notice. Seller or landlord makes no representation as to the environmental condition of the property and recommends purchaser's or tenant's independent investigation.

CHARCOT INDUSTRIAL PARK I

SITE PLAN

UNDER NEW OWNERSHIP



FOR MORE INFORMATION

JOE KELLY
 408.314.7710
 joe.kelly@nmrk.com
 CA RE Lic. 01420963

GRANT MEYLAN
 408.987.4153
 grant.meylan@nmrk.com
 CA RE Lic. 02078953

NEWMARK
 3155 Olsen Avenue, Suite 575
 San Jose, CA 95117
 www.nmrk.com

CHARCOT INDUSTRIAL PARK
 721-751 CHARCOT,
 2023-2037 O'TOOLE,
 2142-2190 PARAGON
 SAN JOSE, CA 95117

NEWMARK

AVAILABILITIES

AVAILABLE OCCUPIED

ADDRESS	TOTAL SF	OFFICE SF	AVAILABLE
2150 Paragon Drive	5,305	5,305	Available Now
2158 Paragon Drive	5,488	5,488	Available Now
2186 Paragon Drive	8,137	8,137	Available Now

CHARCOT INDUSTRIAL PARK I

UNDER NEW OWNERSHIP



FOR MORE INFORMATION:

JOE KELLY
408.314.7710
joe.kelly@nmrk.com
CA RE Lic. 01420963

GRANT MEYLAN
408.987.4153
grant.meylan@nmrk.com
CA RE Lic. 02078953

NEWMARK
3155 Olsen Avenue, Suite 575
San Jose, CA 95117
www.nmrk.com

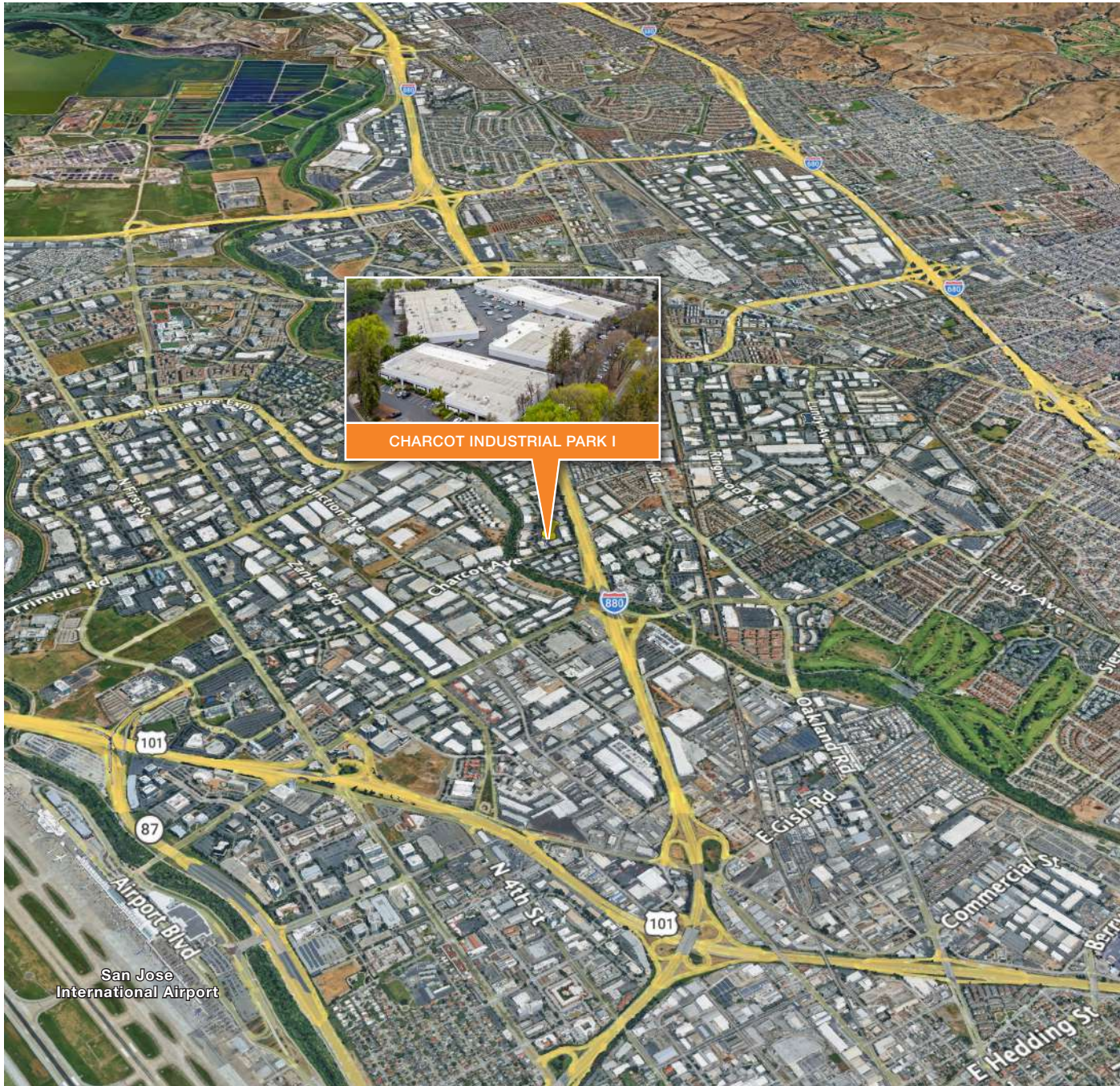
CHARCOT INDUSTRIAL PARK
721-751 CHARCOT,
2023-2037 O'TOOLE,
2142-2190 PARAGON
SAN JOSE, CA 95117

NEWMARK

CHARCOT INDUSTRIAL PARK I

LOCATION

UNDER NEW OWNERSHIP



NEARBY FEATURES

Desirable North San Jose Location

Excellent Access to I-880 & Highway 101

Proximity to San Jose International Airport

FOR MORE INFORMATION:

JOE KELLY

408.314.7710

joe.kelly@nrmk.com

CA RE Lic. 01420963

GRANT MEYLAN

408.987.4153

grant.meylan@nrmk.com

CA RE Lic. 02078953

NEWMARK

3155 Olsen Avenue, Suite 575

San Jose, CA 95117

www.nrmk.com

CHARCOT INDUSTRIAL PARK

721-751 CHARCOT,
2023-2037 O'TOOLE,
2142-2190 PARAGON

SAN JOSE, CA 95117

NEWMARK