

FOR LEASE

Walnut Hollow

4869 WILLIAM PENN HIGHWAY | MURRYSVILLE, PA

RETAIL



PROPERTY INFO

- + 1,580 square feet of retail space available
- + Great visibility on highly traveled William Penn Highway in Murrysville
- + One of the highest income markets with average income exceeding \$100,000 (three mile radius)
- + Tenants include Atria's, The Milk Shake Factory, Chipotle, Juniper Grill, Panera Bread, AT&T, Hallmark and more
- + Nearby tenants include Giant Eagle, Applebee's, Sheetz, Rite Aid, Walgreen's, Great Clips, Verizon, Jimmy John's and more

www.cbre.us/pittsburgh

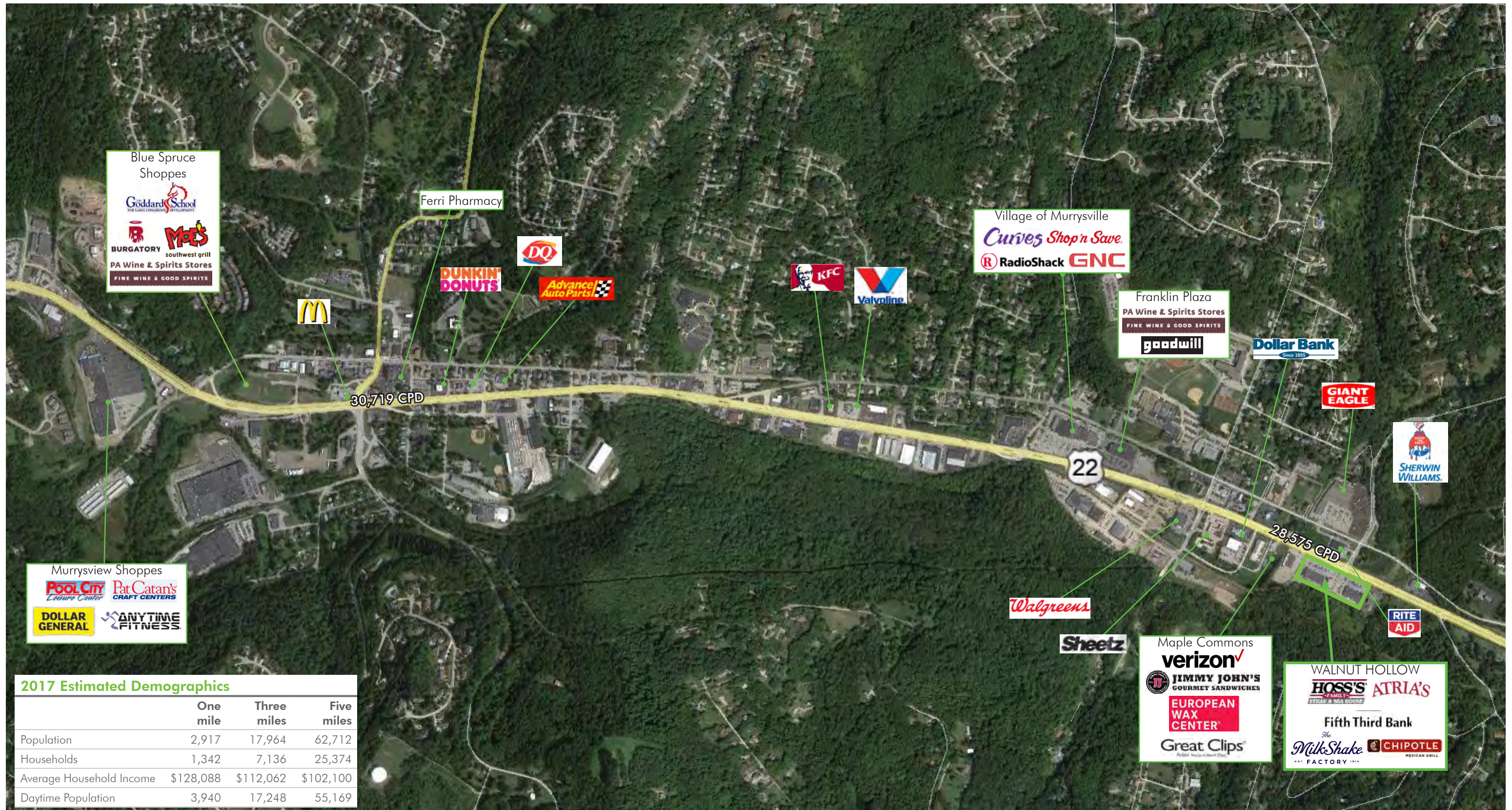
CBRE

FOR LEASE

Walnut Hollow

4869 WILLIAM PENN HIGHWAY | MURRYSVILLE, PA

RETAIL



2017 Estimated Demographics

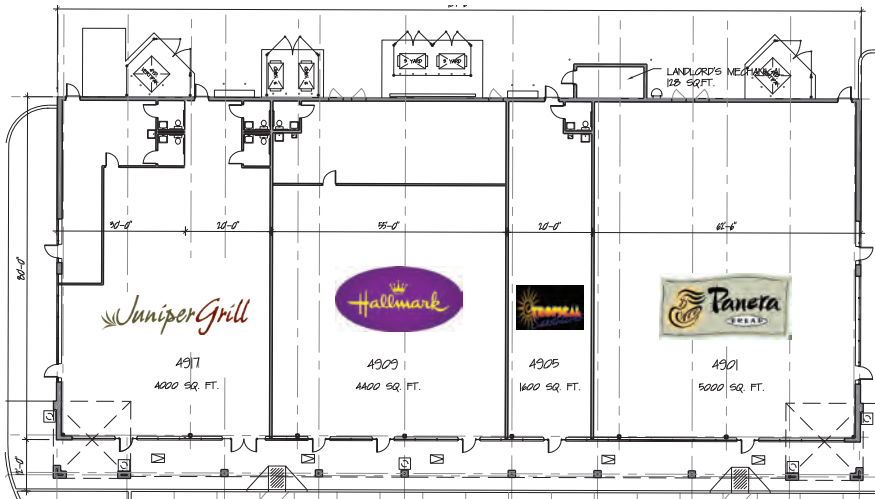
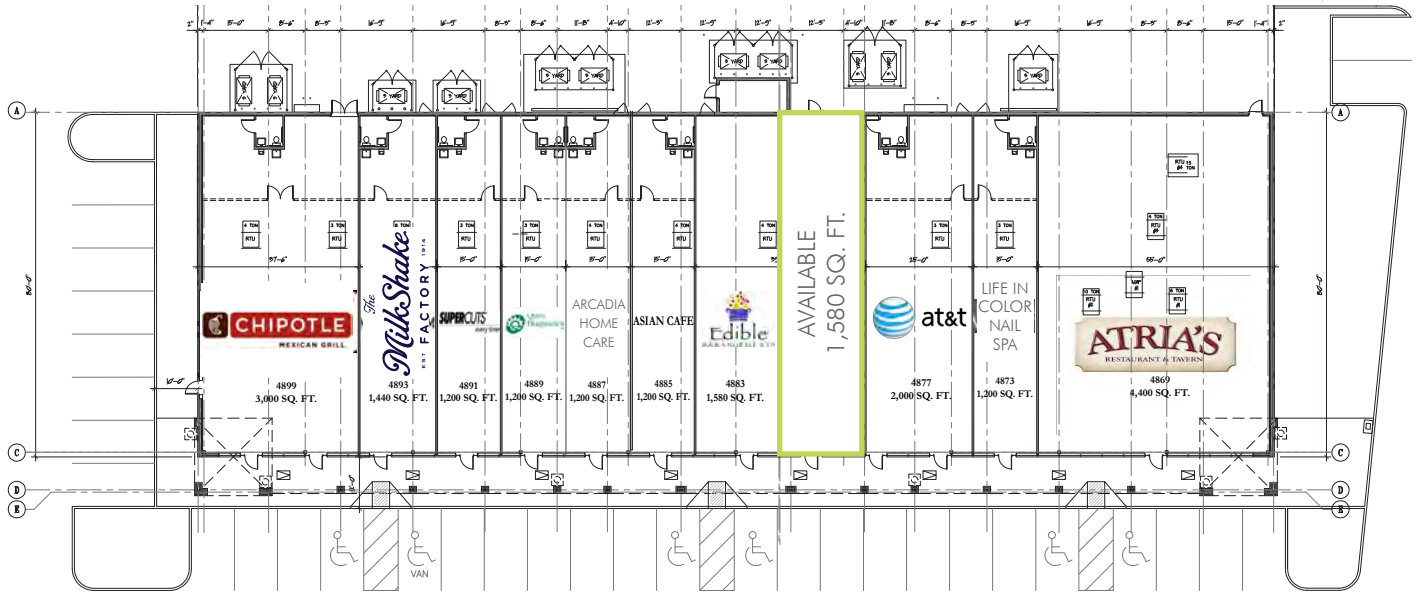
	One mile	Three miles	Five miles
Population	2,917	17,964	62,712
Households	1,342	7,136	25,374
Average Household Income	\$128,088	\$112,062	\$102,100
Daytime Population	3,940	17,248	55,169

FOR LEASE

Walnut Hollow

4869 WILLIAM PENN HIGHWAY | MURRYSVILLE, PA

RETAIL



CONTACT US

Jason Cannon

First Vice President
+1 412 394 9805
jason.cannon@cbre.com

Chad Kosanovic

Senior Associate
+1 412 394 9836
chad.kosanovic@cbre.com

© 2019 CBRE, Inc. This information has been obtained from sources believed reliable. We have not verified it and make no guarantee, warranty or representation about it. Any projections, opinions, assumptions or estimates used are for example only and do not represent the current or future performance of the property. You and your advisors should conduct a careful, independent investigation of the property to determine to your satisfaction the suitability of the property for your needs. Photos herein are the property of their respective owners and use of these images without the express written consent of the owner is prohibited. CBRE and the CBRE logo are service marks of CBRE, Inc. and/or its affiliated or related companies in the United States and other countries. All other marks displayed on this document are the property of their respective owners.