



ben + burka

COMMERCIAL REAL ESTATE

+ 504.301.1002



GOLDEN RECTANGLE MIXED USE/NEIGHBORHOOD COMMERCIAL

1300 Arabella Street, New Orleans, LA 70115



GOLDEN RECTANGLE MIXED USE/ NEIGHBORHOOD COMMERCIAL

1300 Arabella Street, New Orleans, LA 70115

DESCRIPTION

1300 Arabella Street offers a rare mixed-use neighborhood asset consisting of a longstanding ground-floor retail store and two well-maintained apartments on the second floor. The $\pm 4,500$ SF ground floor is currently home to a decades-long, legally non-conforming retail operation that has become a true neighborhood staple for residents and shoppers alike. The ground floor space will be available within ± 90 days.

The $\pm 2,575$ SF second floor features two 2BR/1BA apartments in good condition. One unit is leased on a MTM basis, while the other is vacant and available for immediate occupancy or repositioning.

Ideally situated directly adjacent to the new Robert's Fresh Market, the property sits in the heart of the coveted Golden Rectangle—one of New Orleans' strongest and most established demographic areas. Positioned on the hard corner of Prytania and Arabella Streets, the site is just blocks from the bustling Prytania Street commercial corridor, St. Charles Avenue, and Magazine Street shops and dining.

The property benefits from its legal non-conforming status, allowing the continued operation of a full-service retail use, or any less intense use to include office. Buyer to verify all zoning regulations and permitted uses.

SALE PRICE: \$1,750,000.00

BUILDING SIZE: $\pm 7,117$ SF

ZONING: HU-RD2

LAND SIZE: 6,000 SF

DEMOGRAPHICS

2026 DEMOGRAPHICS	3 minutes	5 minutes	10 minutes
ESTIMATED POPULATION	9,857	24,887	91,139
AVERAGE HH INCOME	\$221,585	\$187,350	\$134,404



ben +
burka

COMMERCIAL REAL ESTATE

Prytania Street

Arabella Street

Nashville Avenue

AERIAL VIEW

ben +
burka

COMMERCIAL REAL ESTATE



APARTMENT PHOTOS

ben+
burka

COMMERCIAL REAL ESTATE

Audubon
Park

GOLDEN
RECTANGLE

Robert
fresh market

DE LA SALLE
CATHOLIC COLLEGE

Prytania
MARKET

Felicity



SABA



POINTS OF INTEREST MAP

1300 Arabella Street, New Orleans, LA 70115



AERIAL VIEW

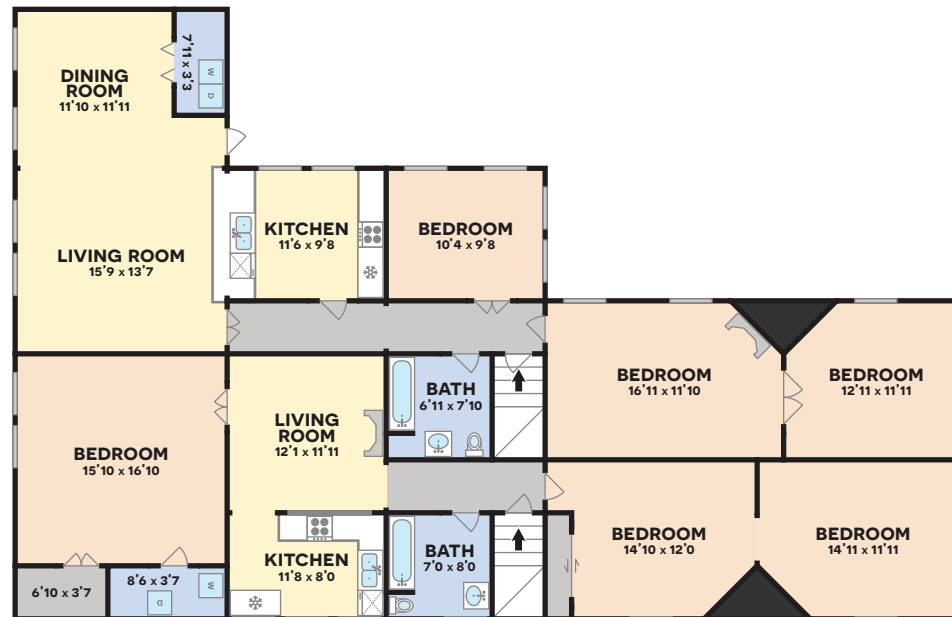
1300 ARABELLA STREET
NEW ORLEANS, LA 70115



1ST FLOOR
ESTIMATE ONLY
PRYTANIA STREET

GROUND FLOOR PLAN

1300 ARABELLA STREET
NEW ORLEANS, LA 70115

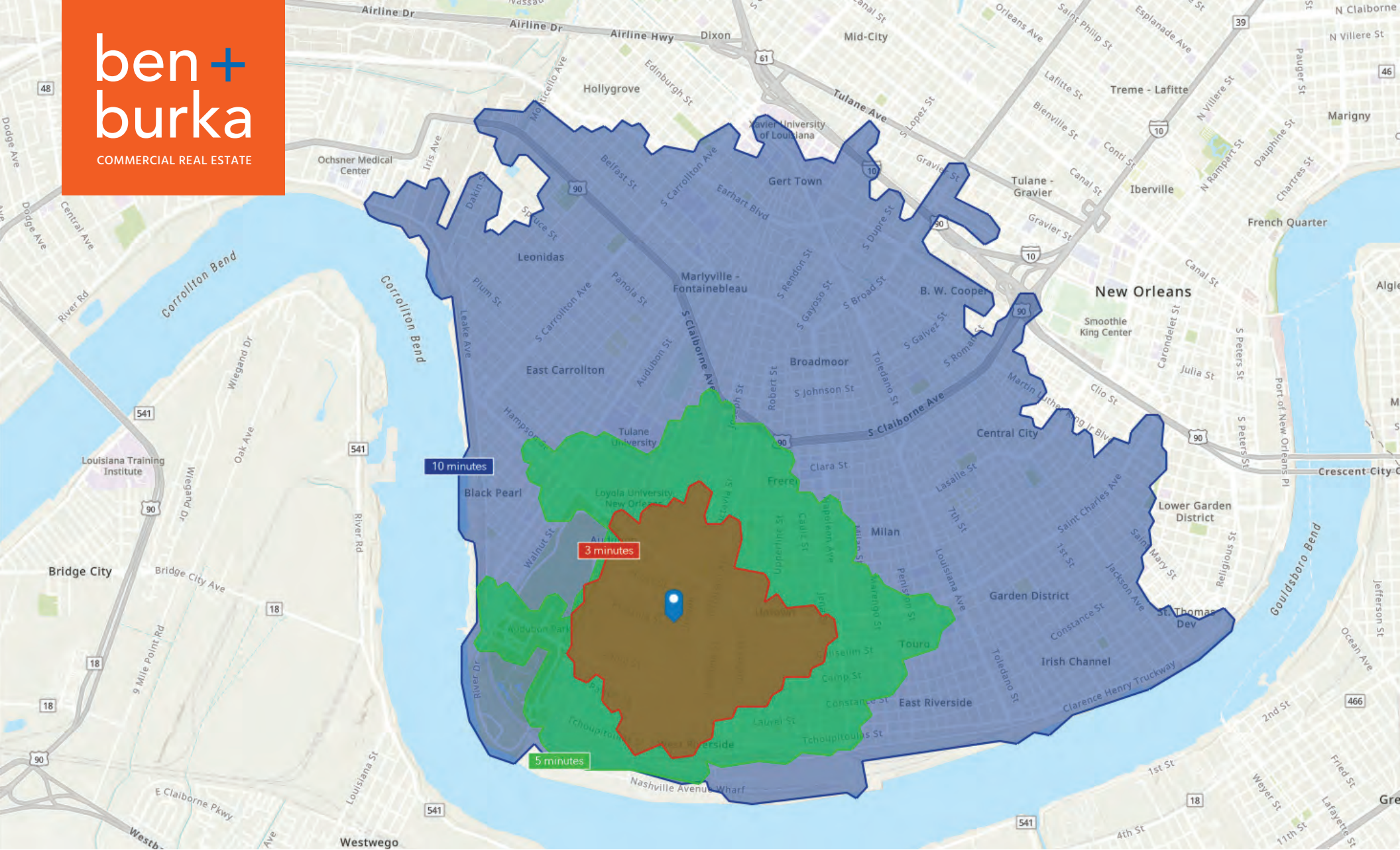


2ND FLOOR
ESTIMATE ONLY
PRYTANIA STREET

ARABELLA STREET



EXTERIOR PHOTOS



DRIVE TIME MAP

📍 1300 Arabella Street, New Orleans, LA 70115

For more information, please contact the Owner's exclusive representative:

ben + burka

COMMERCIAL REAL ESTATE

AARON KAZANOFF
AGENT

25 Walnut Street
New Orleans, LA 70118
504.301.1002
aaron@benburka.com

CASEY BURKA
AGENT

25 Walnut Street
New Orleans, LA 70118
504.301.1002
casey@benburka.com

— LICENSED IN THE STATE OF LOUISIANA —

The information contained herein has been obtained from sources that we deem reliable. No representation or warranty is made as to the accuracy thereof, and it is submitted subject to errors, omissions, change of price, or other conditions, or withdrawal without notice.