

FOR LEASE

North Augusta, SC Outparcel

RETAIL



PROPERTY INFO

- + ±1.32 acre Walmart outparcel — available for lease or BTS
- + Less than 0.5 miles to I-20
- + Edgefield Rd traffic count: 24,700 VPD
- + Contact broker for lease rates



FOR LEASE

North Augusta, SC Outparcel

RETAIL



CONTACT US

ANSEL BUNCH

Vice President
Retail Services
+1 803-744-6861
ansel.bunch@cbre.com

CBRE

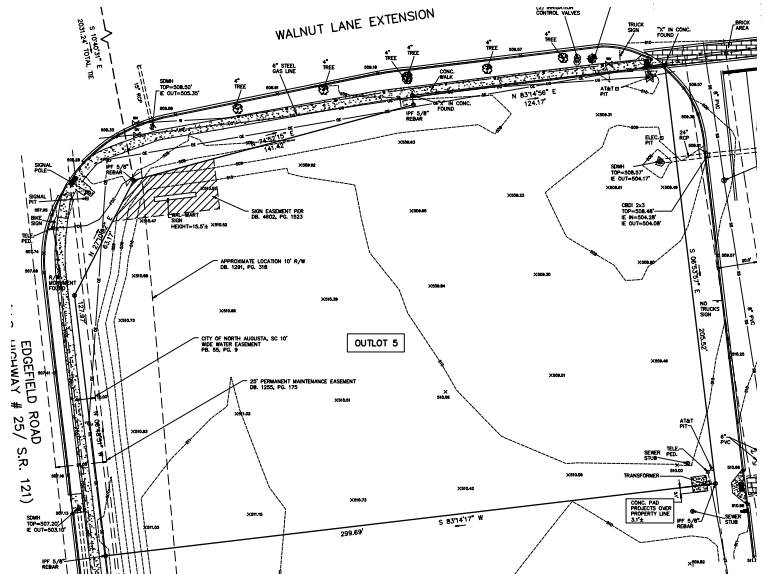
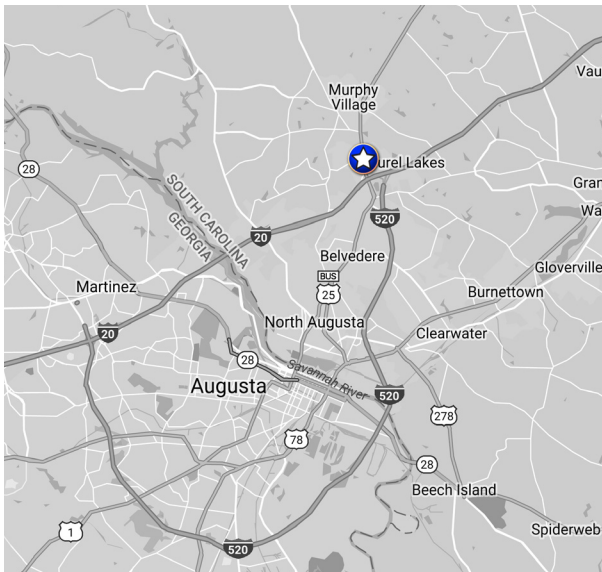
1333 Main St. Ste. 210
Columbia, SC 29201
+1 803 779 7777
www.cbre.us/columbia

© 2018 CBRE, Inc. All rights reserved. This information has been obtained from sources believed reliable, but has not been verified for accuracy or completeness. You should conduct a careful, independent investigation of the property and verify all information. Any reliance on this information is solely at your own risk. CBRE and the CBRE logo are service marks of CBRE, Inc. All other marks displayed on this document are the property of their respective owners. Photos herein are the property of their respective owners. Use of these images without the express written consent of the owner is prohibited.

FOR LEASE

North Augusta, SC Outparcel

RETAIL



2017 Estimated Demographics

	3 Miles	5 Miles	7 Miles
Population	15,595	38,987	75,492
Households	5,827	14,906	30,365
Average Household Income	\$76,156	\$70,947	\$65,766

CONTACT US

ANSEL BUNCH

Vice President
Retail Services
+1 803-744-6861
ansel.bunch@cbre.com

CBRE

1333 Main St. Ste, 210
Columbia, SC 29201
+1 803 779 7777
www.cbre.us/columbia

© 2018 CBRE, Inc. All rights reserved. This information has been obtained from sources believed reliable, but has not been verified for accuracy or completeness. You should conduct a careful, independent investigation of the property and verify all information. Any reliance on this information is solely at your own risk. CBRE and the CBRE logo are service marks of CBRE, Inc. All other marks displayed on this document are the property of their respective owners. Photos herein are the property of their respective owners. Use of these images without the express written consent of the owner is prohibited.