

7141 METROPOLITAN

BARNHART, MO 63012

FOR LEASE:
\$12/PSF NNN



7141 METROPOLITAN

PROPERTY DETAILS

BRIAN MCCUNE

314.276.5493 (CELL)

314.849.5858 (OFFICE)

Brian@bahnrealty.com

NICK BAHN

314.322.2020 (CELL)

314.849.5858 (OFFICE)

Nick@bahnrealty.com



- One 1,000 SF unit remaining
- Open floorplan to accommodate a variety of retail and office business uses
- Excellent visibility with frontage on Metropolitan Blvd off Hwy 55
- Large, newly paved parking lot
- 42,356 Vehicles Per Day on Hwy 55



Stephen F. Bahn Commercial Real Estate . 5024 Griffin Road . St. Louis, MO 63128

The information herein is not warranted although it has been obtained by the owner of the property or from other sources. It is subject to change without notice. Sellers and brokers make no representation as to the environmental or other conditions of the property and recommend that Purchaser investigate fully.



7141 METROPOLITAN

PROPERTY LOCATION

BRIAN MCCUNE

314.276.5493 (CELL)

314.849.5858 (OFFICE)

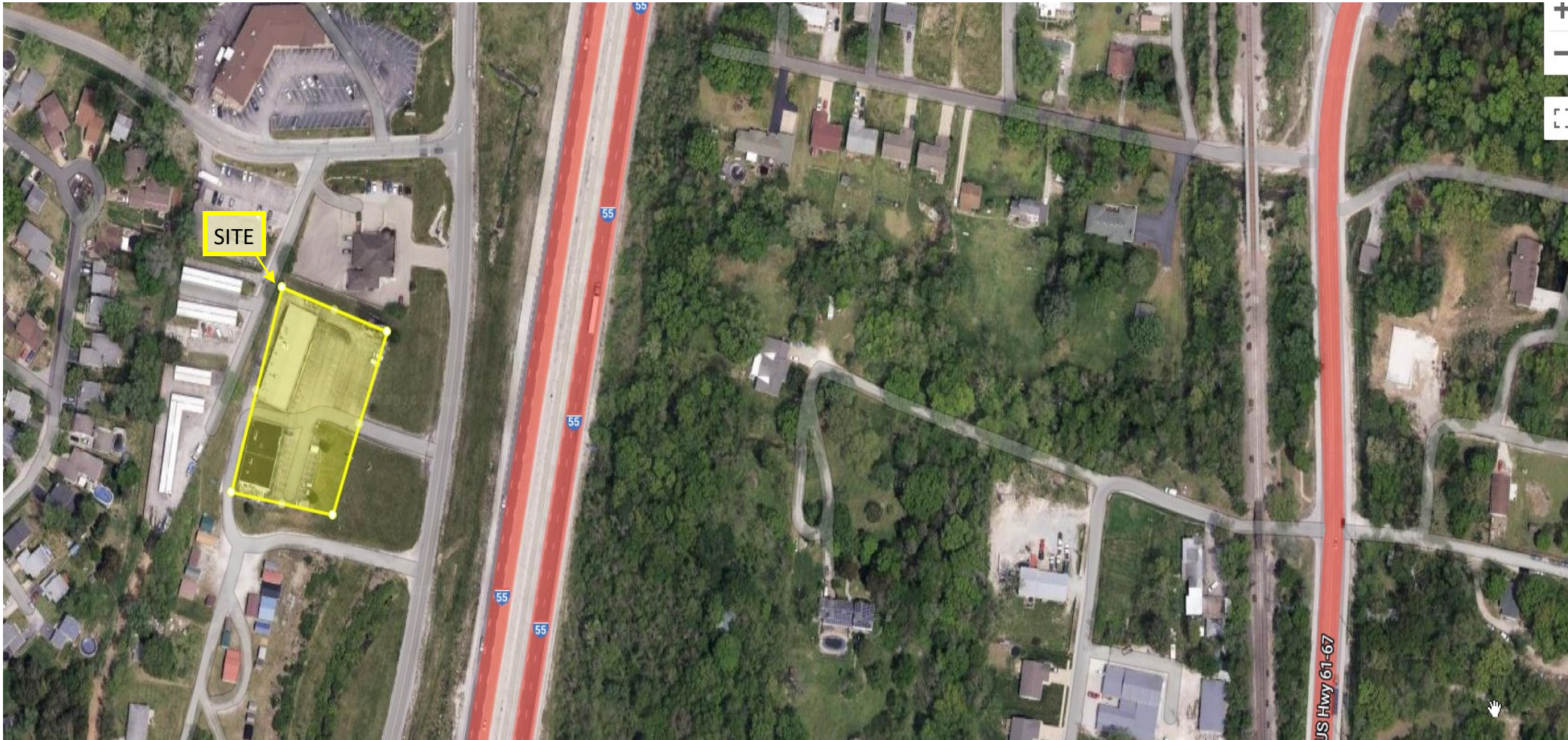
Brian@bahnrealty.com

NICK BAHN

314.322.2020 (CELL)

314.849.5858 (OFFICE)

Nick@bahnrealty.com



Stephen F. Bahn Commercial Real Estate . 5024 Griffin Road . St. Louis, MO 63128

The information herein is not warranted although it has been obtained by the owner of the property or from other sources. It is subject to change without notice. Sellers and brokers make no representation as to the environmental or other conditions of the property and recommend that Purchaser investigate fully.

