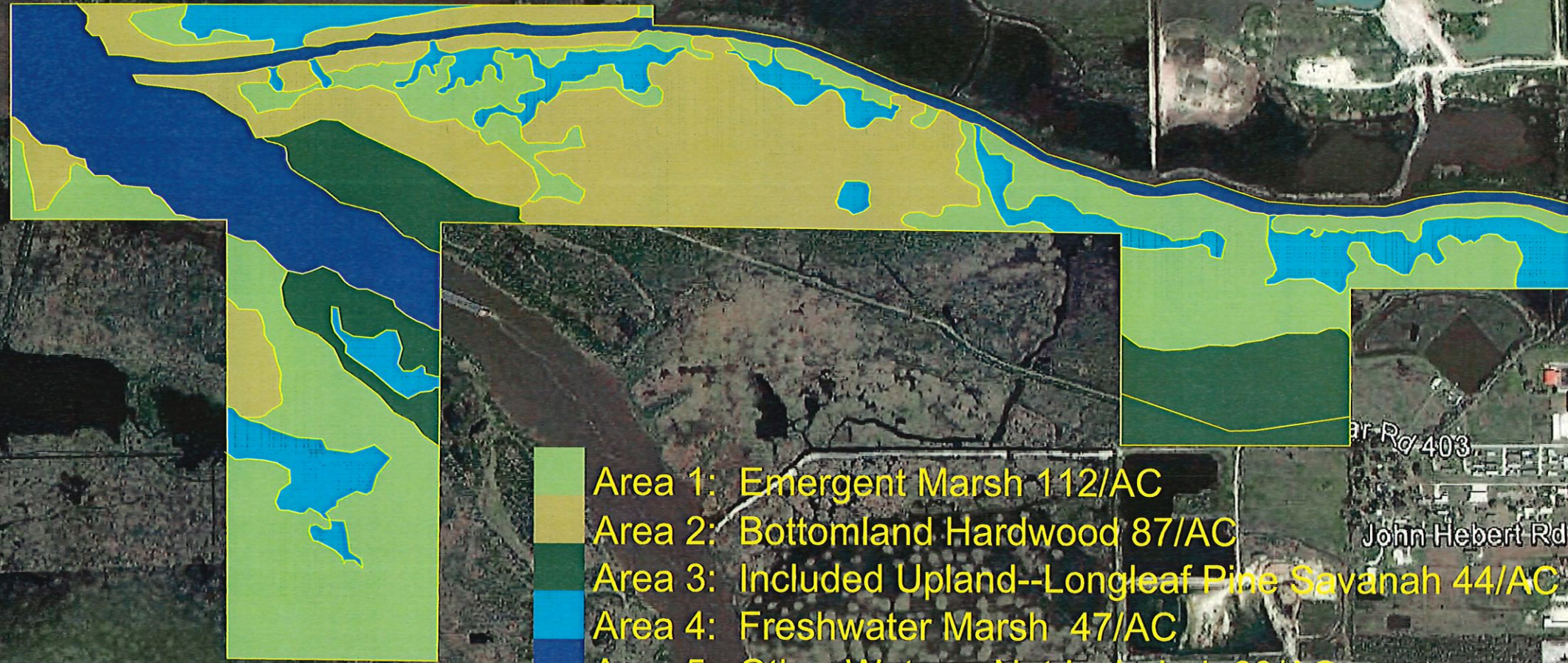


Calcasieu Lake Development Company, LLC

Black Bayou Mitigation Bank



- Area 1: Emergent Marsh 112/AC
- Area 2: Bottomland Hardwood 87/AC
- Area 3: Included Upland--Longleaf Pine Savannah 44/AC
- Area 4: Freshwater Marsh 47/AC
- Area 5: Other Waters--Not Included 60/AC

2337 ft

© 2013 Google

Google Earth

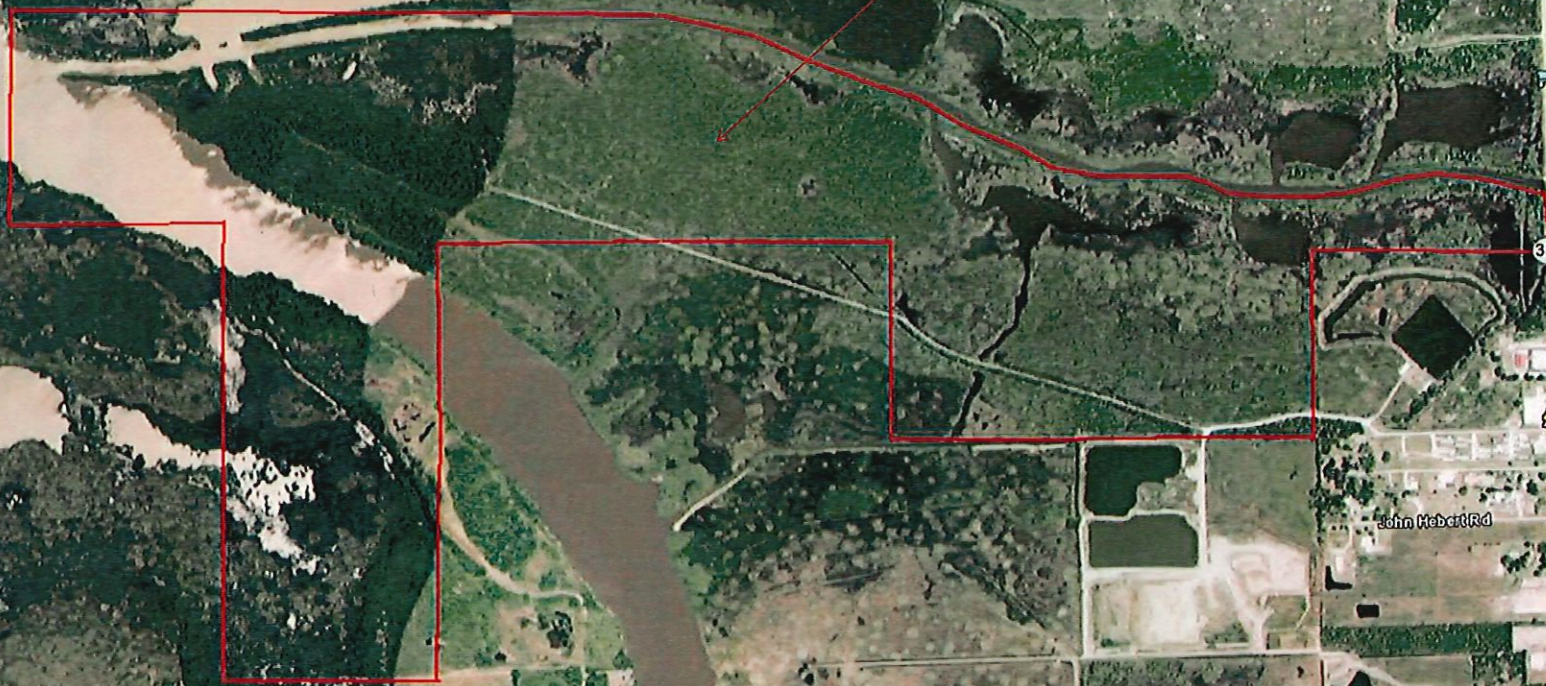
14 15 16 17 18 19 20 21 22 23 24 25 26 27 28 29 30 31 32 33 34 35 36 37 38 39 40 41 42 43 44 45 46 47 48 49 50 51 52 53 54 55 56 57 58 59 60 61 62 63 64 65 66 67 68 69 70 71 72 73 74 75 76 77 78 79 80 81 82 83 84 85 86 87 88 89 90 91 92 93 94 95 96 97 98 99 100

Aug 24, 2009

1993 2010

Boones Corner Property

Approximately 315 Acres +/-



Imagery Date: May 18, 2009

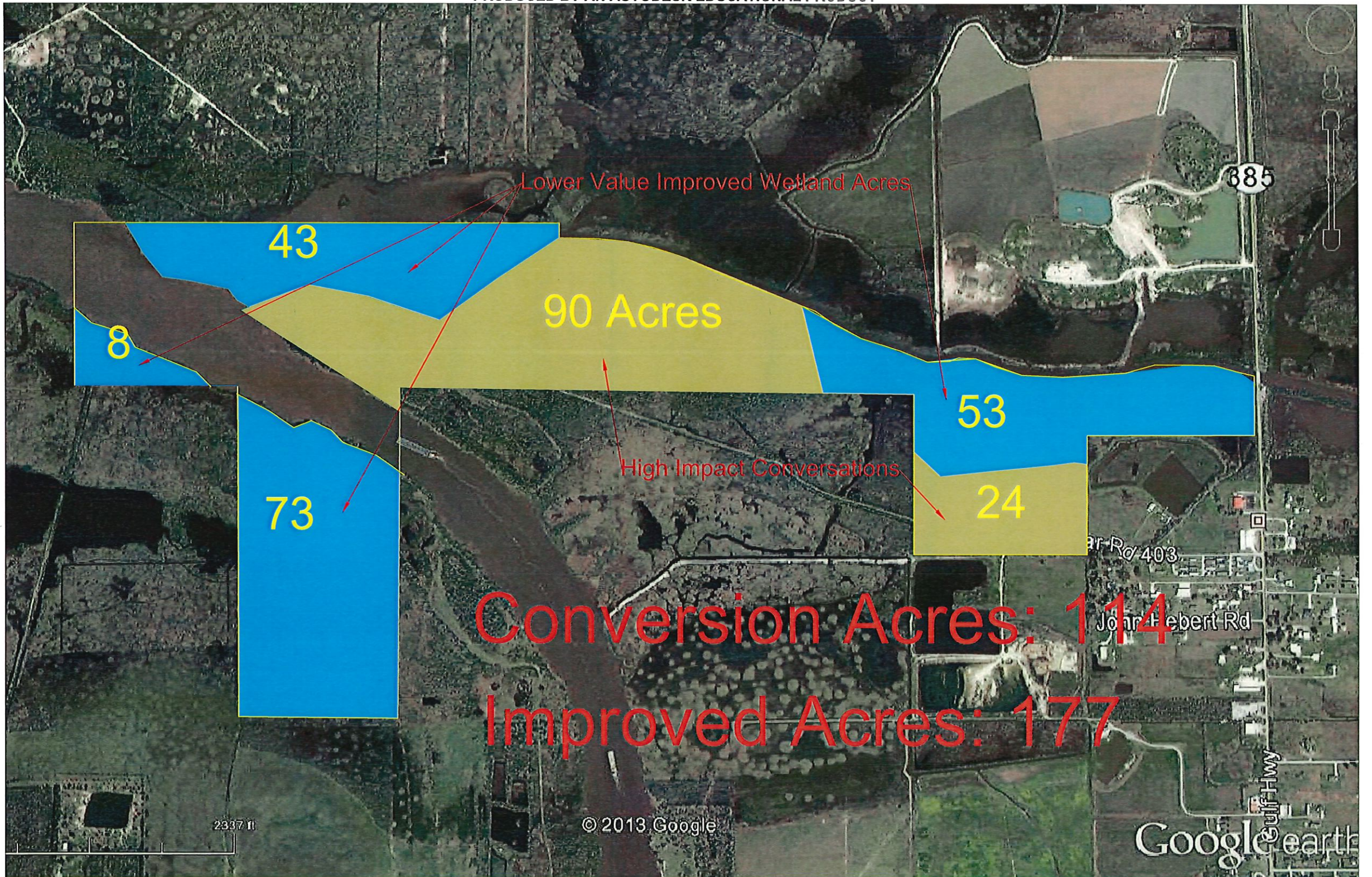
Image USDA Farm Service Agency

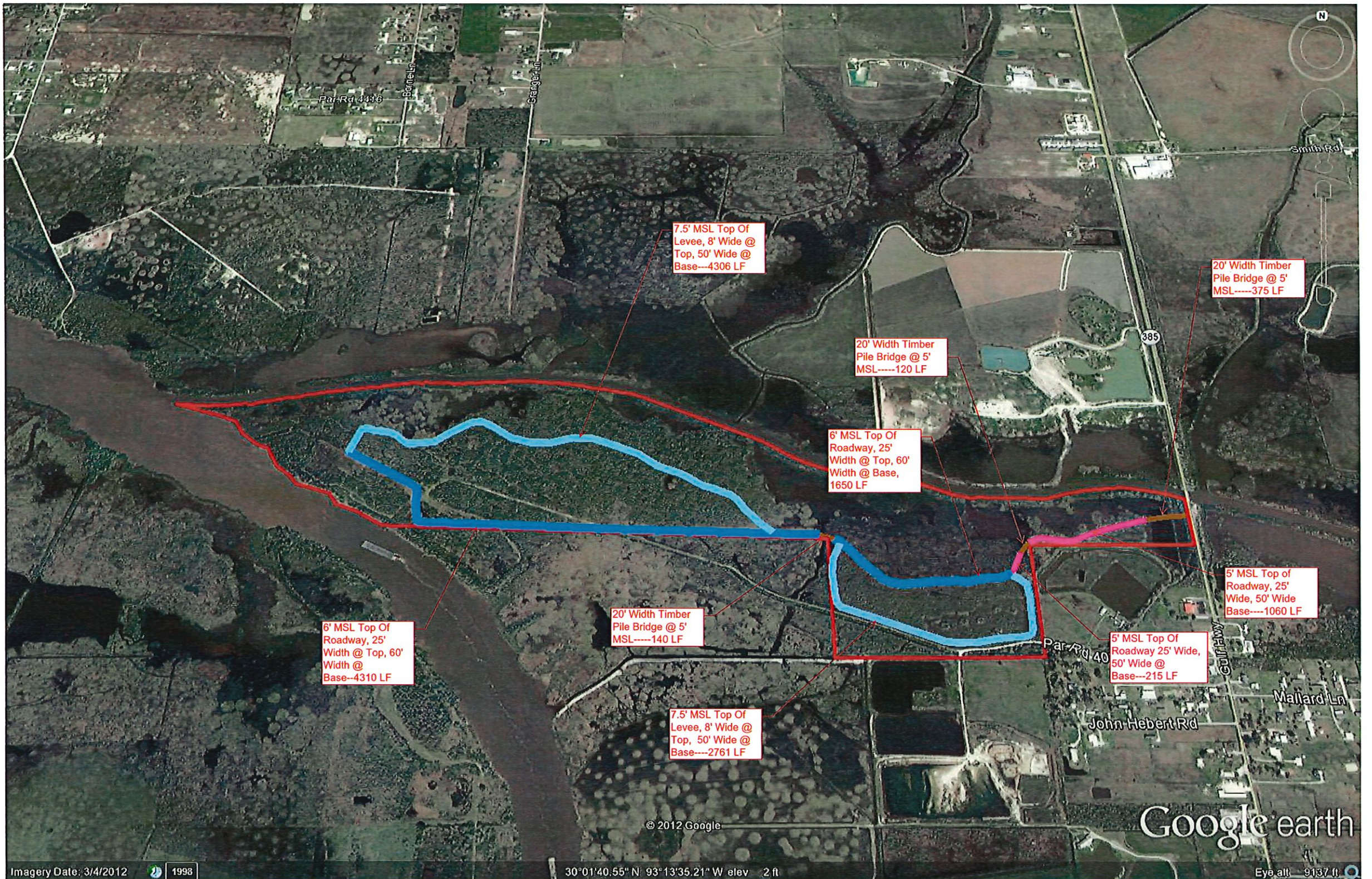
© 2010 Europa Technologies
© 2010 Google

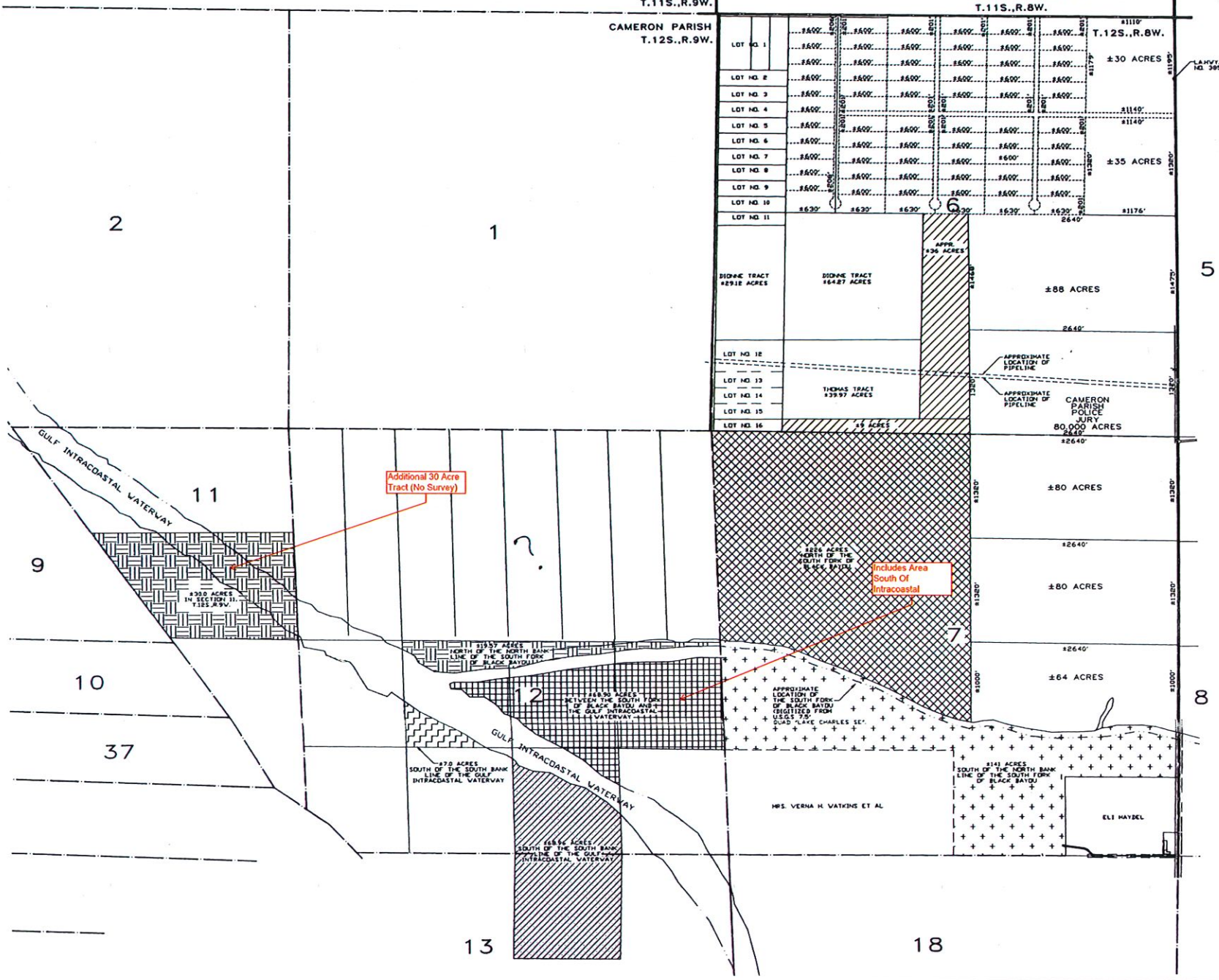
30° 01' 16.92" N 93° 13' 39.65" W elev 0m

© 2010 Google

Eye alt 3.78 km







DRAWN: R.R.J.
 CHECKED:
 APPROVED:

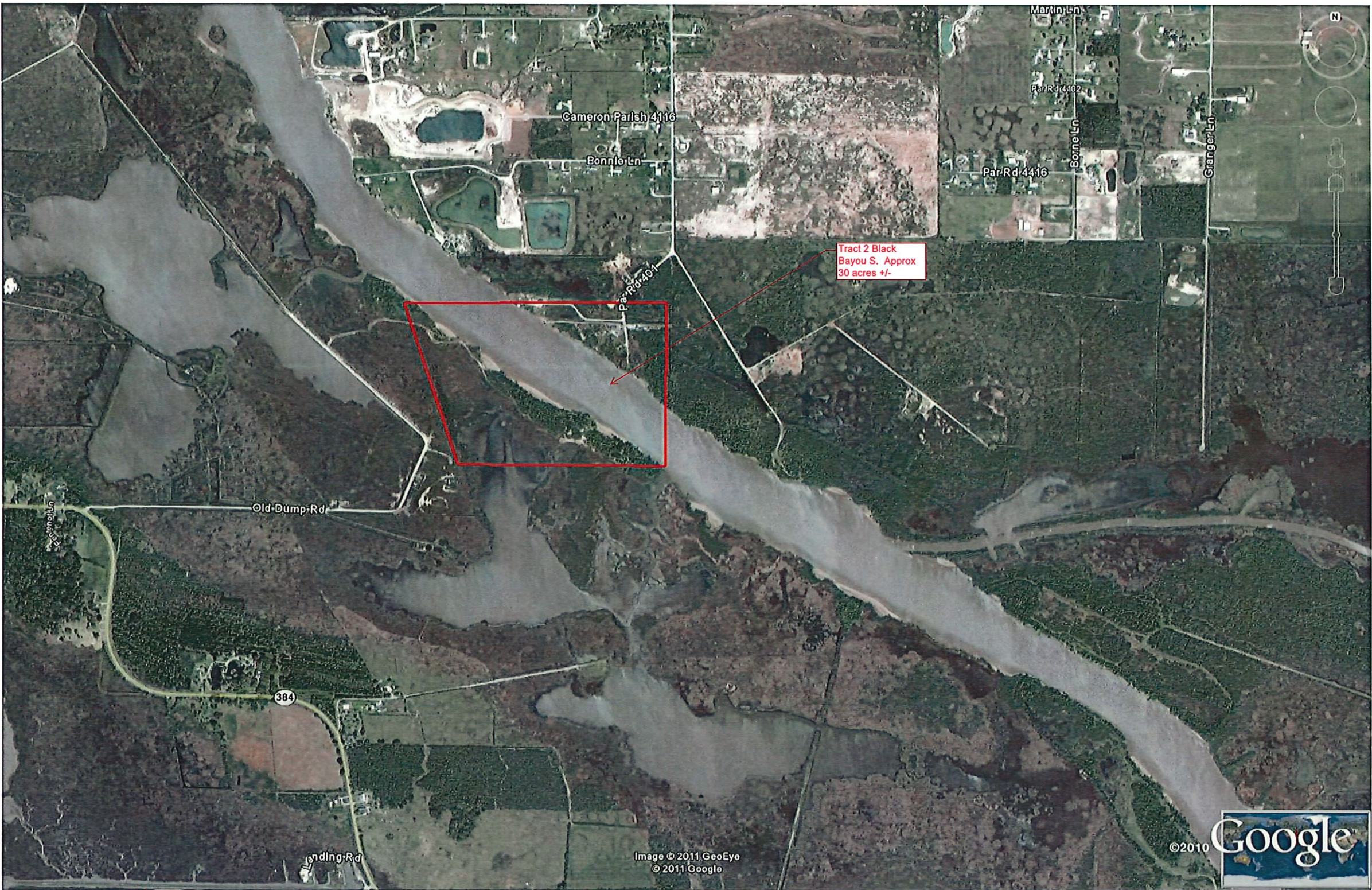
ON TARGET
 Surveying, Inc.
 P. O. Box 229, Grand Chenier, Louisiana 70643 (318) 538-2563 FAX (318) 538-2596

MOFFETT REALTY, INC.
 SKETCH OF PROPERTY IN
 SECTIONS 6 AND 7
 T. 12 S., R. 8 W.

BY	REVISIONS	DATE
R.R.J.	ADDED SECTIONS 12 & 13, T.12S.,R.9W.	01/28/99
R.R.J.	ADDED SECTIONS 11, T.12S.,R.9W.	01/29/99

PLAN

PROJECT NO.	DATE
	01/11/99
SCALE	1"=600'
SHEET	1 OF 1



Tract 2 Black Bayou S. Approx 30 acres +/-

Cameron Parish 4116

Bonnle Ln

Par Rd 4416

Bonnle Ln

Granger Ln

Martin Ln

Par Rd 4102

Old Dump Rd

384

ending Rd

Image © 2011 GeoEye
© 2011 Google

