

Old Hendersonville Rd.

Likewise



141 Brickton Dr..



SUITE 1

5,000 SF
1 ROLL UP
DOOR REAR

SUITE 2

5,000 SF
1 ROLL UP
DOOR REAR

SUITE 3

5,000 SF
1 ROLL UP
DOOR REAR

SUITE 4

5,000 SF
1 ROLL UP
DOOR REAR

SUITE 5

5,000 SF
1 ROLL UP
DOOR REAR

SUITE 6

5,000 SF
1 ROLL UP
DOOR REAR

SUITE 7

15,000 SF
3 ROLL UP DOORS
2 TRUCK DOCKS

For Lease



**NEW CONSTRUCTION
WAREHOUSE/DISTRUBUTION**

Brickton Drive Business Center

Likewise
COMMERCIAL REAL ESTATE

Stacy Wheeler LISTING BROKER

423.504.8167 | stacy@likewisecommercial.com | likewisecommercial.com

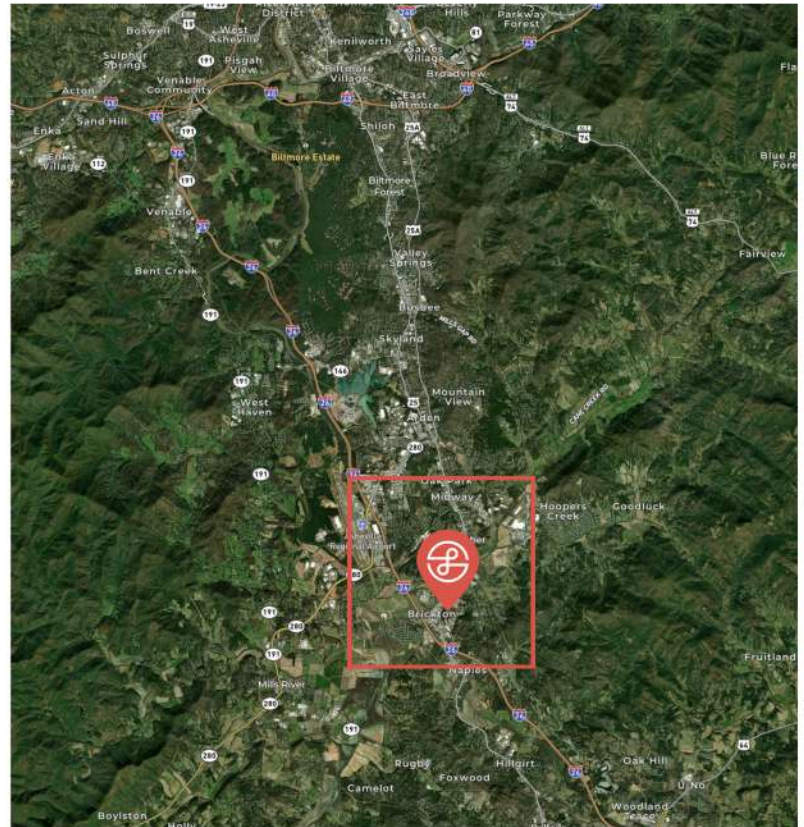


OFFERING SUMMARY

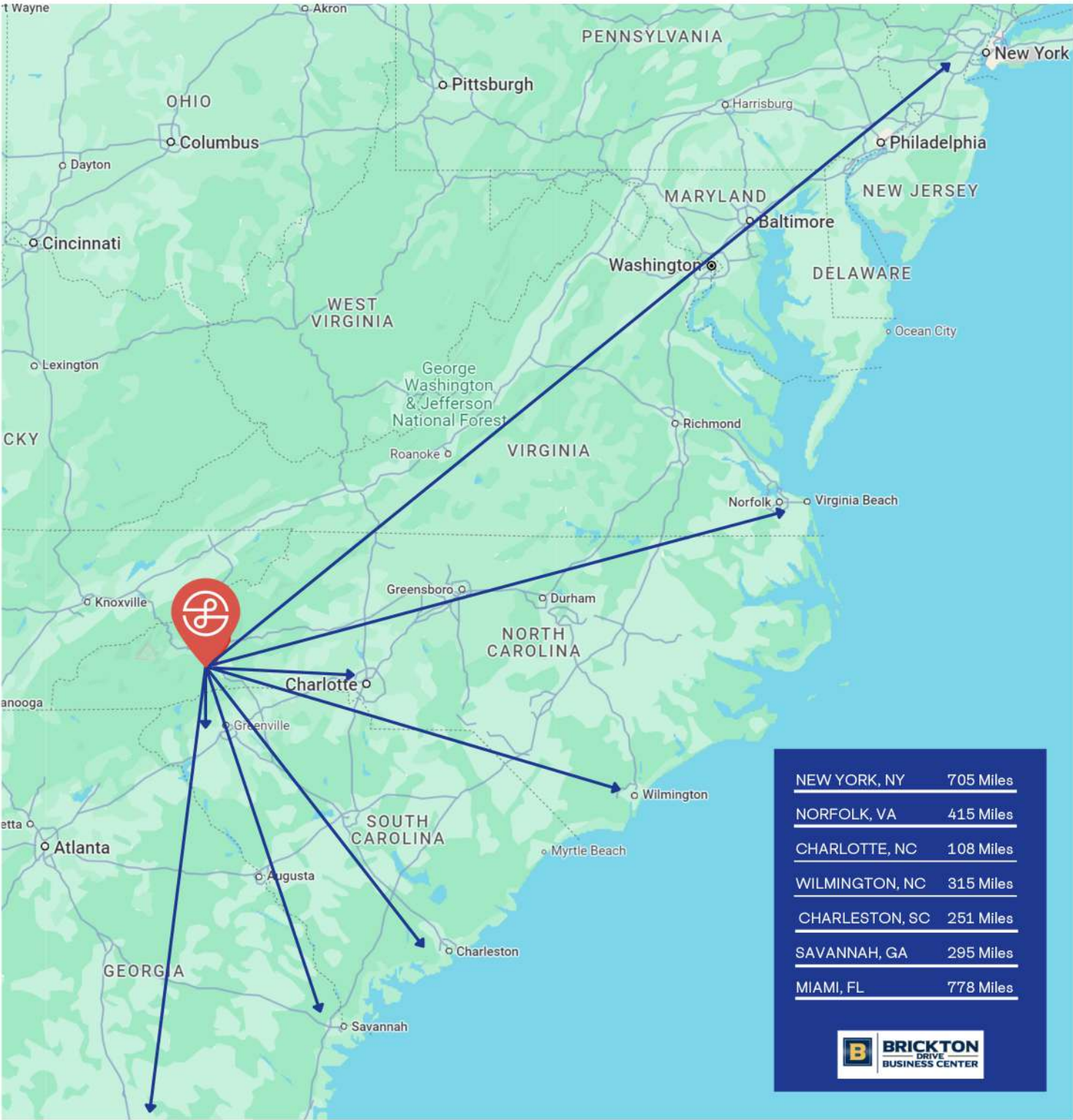
LEASE PRICE	\$12/SF + NNN
UNIT SIZE	± 5,000 - 15,000 SF PER UNIT ± 45,000 SF TOTAL
SUITABLE USE	Flex, Showroom, Office, Light Manufacturing

PROPERTY FEATURES

STREET ADDRESS	141 Brickton Drive, Fletcher, NC 28732
SITE SIZE	± 3.34 AC
ZONING	Industrial (I)
COUNTY	Henderson
MAJOR ROADS	- 2 miles to I-26 - 14 miles to I-40
AIRPORTS	4 miles to Asheville Regional Airport
COLUMN SPACE	Clearspan Interior: 25' along Exterior Eave
AVAILABILITY	- Suites 1-6 at 5,000 SF per unit - 1 Roll up door per unit - Suite 7 at 15,000 SF - 3 Roll up doors and 2 truck docks
LOADING	Roll-up doors and loading docs
FLOORS	6" structurally reinforced slab-on-grade
EXTERIOR WALLS	Insulated and metal panels
ROOF	Insulated and standing steam roofing
CLEAR HEIGHT	17' - 22'
AUTO PARKING	Yes
TRAILER PARKING	Only at dock
HVAC	Heat only
SPRINKER SYSTEM	Yes
WET & DRY SYSTEM	Wet System only
LIGHTING	LED Hi-Bay
ELECTRICITY	LED Hi-Bay
SECURITY & FENCING	None



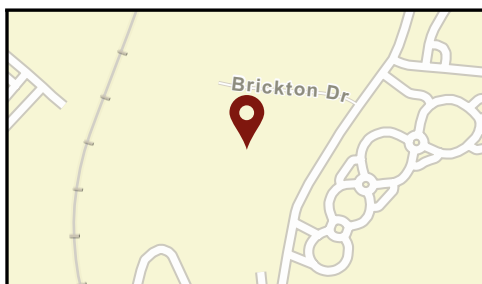
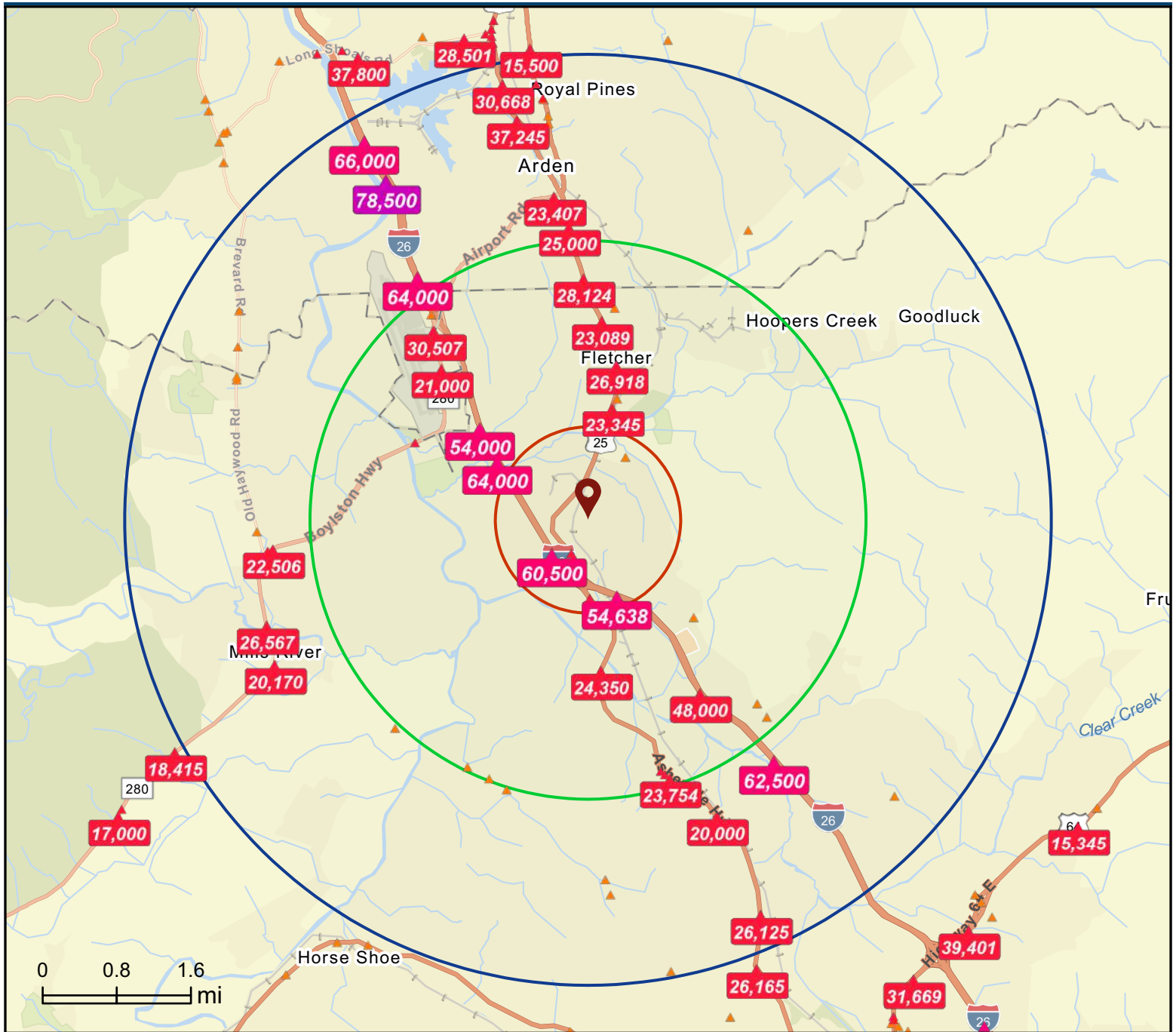
BUSINESS LOCATIONS NOT EXACT



Traffic Count Map

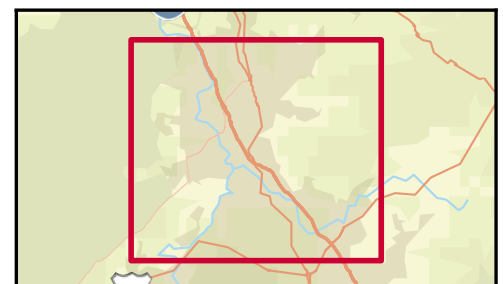
141 Brickton Dr, Fletcher, North Carolina, 28732
Rings: 1, 3, 5 mile radii

Prepared by Esri
Latitude: 35.40895
Longitude: -82.50701



Average Daily Traffic Volume

- ▲ Up to 6,000 vehicles per day
- ▲ 6,001 - 15,000
- ▲ 15,001 - 30,000
- ▲ 30,001 - 50,000
- ▲ 50,001 - 100,000
- ▲ More than 100,000 per day



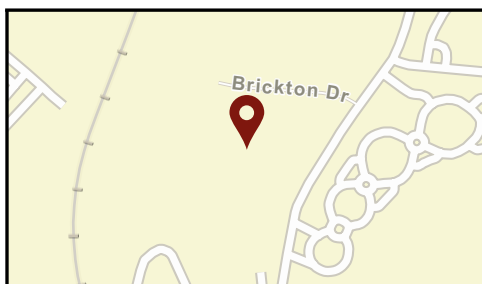
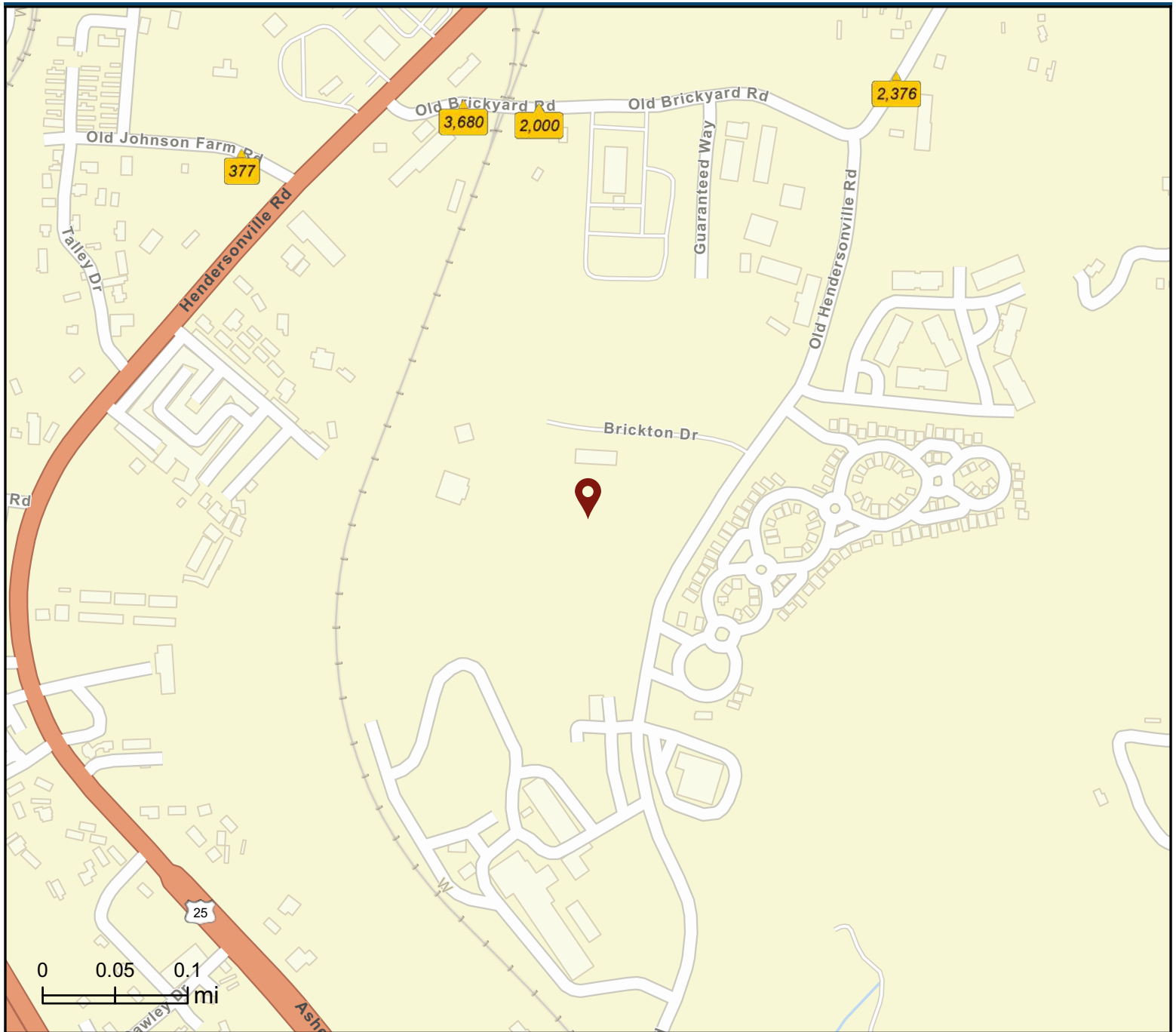
Source: ©2025 Kalibrate Technologies (Q1 2025).

October 03, 2025

Traffic Count Map - Close Up

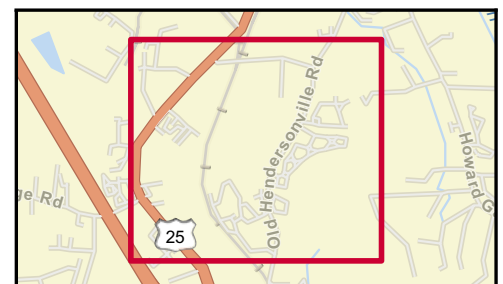
141 Brickton Dr, Fletcher, North Carolina, 28732
Rings: 1, 3, 5 mile radii

Prepared by Esri
Latitude: 35.40895
Longitude: -82.50701



Average Daily Traffic Volume

- ▲ Up to 6,000 vehicles per day
- ▲ 6,001 - 15,000
- ▲ 15,001 - 30,000
- ▲ 30,001 - 50,000
- ▲ 50,001 - 100,000
- ▲ More than 100,000 per day



Source: ©2025 Kalibrate Technologies (Q1 2025).

October 03, 2025

141 Brickton Dr, Fletcher, North Carolina, 28732
Ring: 5 mile radius



Dreambelt (K5)

Dominant Tapestry Segment

KEY FACTS



54,324

Total Population



\$403,234

Median Home Value



2,130

Businesses



55,352

Daytime Population



44.2

Median Age



0.8%

2025-2030
Pop Growth
Rate



\$42,926

Per Capita
Income



2.4

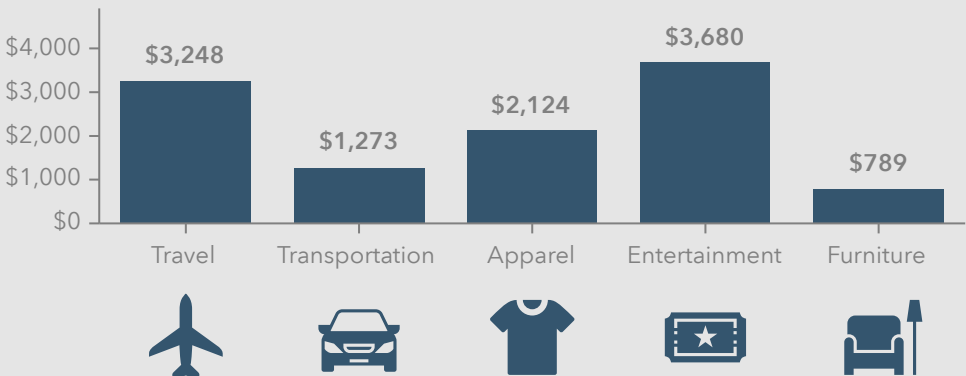
Avg Household
Size



\$75,003

Median Household
Income

KEY SPENDING FACTS



Source: This infographic contains data provided by Esri (2025, 2030), Esri-Data Axle (2025), Esri-U.S. BLS (2025).

© 2025 Esri

Spending facts are average annual dollars per household

Business Summary Report (NAICS)

141 Brickton Dr, Fletcher, North Carolina, 28732



Rings: 1, 3, 5 mile radii

Data for all businesses in area	1 mile	3 miles	5 miles
Total Businesses	143	980	2,130
Total Employees	3,578	13,149	26,674
Total Population	2,699	19,234	54,324
Employee/Population Ratio (per 100)	132.6	68.4	49.1

by NAICS Codes	Businesses		Employees		Businesses		Employees		Businesses		Employees	
	Number	%	Number	%	Number	%	Number	%	Number	%	Number	%
Agriculture, Forestry, Fishing & Hunting (11)	1	0.7%	3	0.1%	3	0.3%	13	0.1%	13	0.6%	105	0.4%
Mining (21)	1	0.7%	1	0.0%	2	0.2%	6	0.1%	2	0.1%	9	0.0%
Utilities (22)	0	0.0%	0	0.0%	2	0.2%	60	0.5%	3	0.1%	74	0.3%
Construction (23)	11	7.7%	91	2.5%	99	10.1%	724	5.5%	240	11.3%	1,475	5.5%
Building Construction	6	4.2%	34	0.9%	38	3.9%	260	2.0%	91	4.3%	571	2.1%
Heavy/Civil Eng Construction	1	0.7%	33	0.9%	6	0.6%	78	0.6%	12	0.6%	108	0.4%
Specialty Trade Contractor	4	2.8%	24	0.7%	56	5.7%	386	2.9%	136	6.4%	796	3.0%
Manufacturing (31-33)	7	4.9%	625	17.5%	76	7.8%	2,347	17.9%	171	8.0%	5,817	21.8%
Wholesale Trade (42)	4	2.8%	19	0.5%	41	4.2%	885	6.7%	87	4.1%	2,354	8.8%
Durable Goods	4	2.8%	18	0.5%	31	3.2%	625	4.8%	66	3.1%	1,658	6.2%
Nondurable Goods	0	0.0%	2	0.1%	10	1.0%	260	2.0%	19	0.9%	685	2.6%
Trade Broker	0	0.0%	0	0.0%	0	0.0%	0	0.0%	1	0.1%	10	0.0%



Source: This infographic contains data provided by Esri-Data Axle (2025), Esri (2025). Data note: Not all NAICS subcategories for a 2 digit major category are being shown.

Business Summary Report (NAICS)

141 Brickton Dr, Fletcher, North Carolina, 28732



Rings: 1, 3, 5 mile radii

by NAICS Codes	1 mile				3 miles				5 miles			
	Businesses		Employees		Businesses		Employees		Businesses		Employees	
	Number	%	Number	%	Number	%	Number	%	Number	%	Number	%
Retail Trade (44-45)	25	17.5%	145	4.0%	145	14.8%	1,441	11.0%	291	13.7%	3,261	12.2%
Motor Vehicle & Parts Dealers	8	5.6%	49	1.4%	33	3.4%	516	3.9%	61	2.9%	797	3.0%
Furniture & Home Furnishing Stores	1	0.7%	4	0.1%	14	1.4%	61	0.5%	23	1.1%	117	0.4%
Electronics & Appliance Stores	1	0.7%	2	0.1%	5	0.5%	28	0.2%	11	0.5%	135	0.5%
Building & Garden Equipment	3	2.1%	13	0.4%	10	1.0%	111	0.8%	28	1.3%	329	1.2%
Food & Beverage Stores	3	2.1%	8	0.2%	12	1.2%	215	1.6%	32	1.5%	586	2.2%
Health & Personal Care Stores	0	0.0%	0	0.0%	9	0.9%	66	0.5%	21	1.0%	132	0.5%
Gasoline Stations	1	0.7%	9	0.3%	7	0.7%	44	0.3%	14	0.7%	81	0.3%
Clothing, Shoe and Jewellery Stores	1	0.7%	6	0.2%	10	1.0%	68	0.5%	20	0.9%	130	0.5%
Sporting Goods, Hobby & Music Stores	6	4.2%	39	1.1%	26	2.6%	159	1.2%	46	2.2%	306	1.1%
General Merchandise Stores	1	0.7%	15	0.4%	19	1.9%	173	1.3%	35	1.6%	648	2.4%
Transportation & Warehousing (48-49)	9	6.3%	100	2.8%	38	3.9%	387	2.9%	73	3.4%	597	2.2%
Truck Transportation	2	1.4%	71	2.0%	13	1.3%	251	1.9%	29	1.4%	328	1.2%
Information (51)	1	0.7%	2	0.1%	9	0.9%	89	0.7%	25	1.2%	196	0.7%
Finance & Insurance (52)	2	1.4%	152	4.3%	25	2.5%	289	2.2%	59	2.8%	984	3.7%
Central Bank/Credit & Related Activities	2	1.4%	151	4.2%	12	1.2%	250	1.9%	29	1.4%	873	3.3%
Securities & Commodity Contracts	0	0.0%	0	0.0%	7	0.7%	19	0.1%	16	0.8%	38	0.1%
Funds, Trusts & Other Financial	0	0.0%	1	0.0%	6	0.6%	19	0.1%	13	0.6%	74	0.3%
Real Estate, Rental & Leasing (53)	8	5.6%	74	2.1%	58	5.9%	349	2.6%	112	5.3%	585	2.2%
Professional, Scientific & Tech Services (54)	11	7.7%	75	2.1%	65	6.6%	351	2.7%	165	7.8%	884	3.3%
Legal Services	0	0.0%	1	0.0%	5	0.5%	14	0.1%	16	0.8%	49	0.2%



Source: This infographic contains data provided by Esri-Data Axle (2025), Esri (2025). Data note: Not all NAICS subcategories for a 2 digit major category are being shown.

Business Summary Report (NAICS)

141 Brickton Dr, Fletcher, North Carolina, 28732



Rings: 1, 3, 5 mile radii

by NAICS Codes	1 mile				3 miles				5 miles			
	Businesses		Employees		Businesses		Employees		Businesses		Employees	
	Number	%	Number	%	Number	%	Number	%	Number	%	Number	%
Management of Companies (55)	1	0.7%	2	0.1%	4	0.4%	14	0.1%	8	0.4%	24	0.1%
Administrative, Support & Waste Mgmt (56)	4	2.8%	17	0.5%	29	3.0%	137	1.0%	78	3.7%	594	2.2%
Educational Services (61)	3	2.1%	102	2.9%	18	1.8%	435	3.3%	47	2.2%	1,055	4.0%
Health Care & Social Assistance (62)	25	17.5%	2,000	55.9%	87	8.9%	3,710	28.2%	154	7.2%	4,758	17.8%
Ambulatory Health Care	16	11.2%	209	5.8%	61	6.2%	955	7.3%	101	4.7%	1,486	5.6%
Hospital	4	2.8%	1,748	48.9%	8	0.8%	2,399	18.2%	10	0.5%	2,412	9.0%
Nursing/Residential Care	1	0.7%	18	0.5%	9	0.9%	248	1.9%	19	0.9%	602	2.3%
Social Assistance	4	2.8%	25	0.7%	10	1.0%	109	0.8%	24	1.1%	257	1.0%
Arts, Entertainment & Recreation (71)	2	1.4%	31	0.9%	25	2.5%	181	1.4%	52	2.4%	347	1.3%
Accommodation & Food Services (72)	7	4.9%	79	2.2%	79	8.1%	1,048	8.0%	146	6.8%	2,036	7.6%
Accommodation	0	0.0%	3	0.1%	21	2.1%	226	1.7%	29	1.4%	408	1.5%
Food & Drinking Places	7	4.9%	77	2.1%	58	5.9%	822	6.3%	117	5.5%	1,628	6.1%
Other Services Except Public Admin (81)	13	9.1%	45	1.3%	104	10.6%	433	3.3%	248	11.6%	989	3.7%
Repair & Maintenance	4	2.8%	18	0.5%	35	3.6%	183	1.4%	83	3.9%	356	1.3%
Auto Repair & Maintenance	3	2.1%	16	0.5%	25	2.5%	151	1.1%	54	2.5%	250	0.9%
Personal & Laundry Service	3	2.1%	7	0.2%	28	2.9%	108	0.8%	70	3.3%	274	1.0%
Civic and Other Orgs	6	4.2%	20	0.6%	40	4.1%	142	1.1%	96	4.5%	360	1.4%
Public Administration (92)	0	0.0%	14	0.4%	16	1.6%	253	1.9%	35	1.6%	521	1.9%
Unclassified Establishments (99)	8	5.6%	0	0.0%	54	5.5%	0	0.0%	122	5.7%	8	0.0%
Total (11-99)	143	100.0%	3,578	100.0%	980	100.0%	13,149	100.0%	2,130	100.0%	26,674	100.0%



Source: This infographic contains data provided by Esri-Data Axle (2025), Esri (2025). Data note: Not all NAICS subcategories for a 2 digit major category are being shown.

Business Summary Report (SIC)

141 Brickton Dr, Fletcher, North Carolina, 28732



Rings: 1, 3, 5 mile radii

Data for all businesses in area	1 mile	3 miles	5 miles
Total Businesses	143	980	2,130
Total Employees	3,578	13,149	26,674
Total Population	2,699	19,234	54,324
Employee/Population Ratio (per 100)	132.6	68.4	49.1

by SIC Codes	Businesses		Employees		Businesses		Employees		Businesses		Employees	
	Number	%	Number	%	Number	%	Number	%	Number	%	Number	%
Agriculture & Mining (01-14)	4	2.8%	49	1.4%	22	2.2%	133	1.0%	53	2.5%	324	1.2%
Construction (15-17)	9	6.3%	52	1.4%	96	9.8%	667	5.1%	229	10.8%	1,383	5.2%
Manufacturing (20-39)	7	4.9%	624	17.4%	68	6.9%	2,254	17.1%	152	7.1%	5,648	21.2%
Transportation (40-47)	9	6.3%	105	2.9%	45	4.6%	406	3.1%	90	4.2%	645	2.4%
Communication (48)	0	0.0%	1	0.0%	2	0.2%	36	0.3%	9	0.4%	102	0.4%
Utility (49)	1	0.7%	2	0.1%	5	0.5%	81	0.6%	12	0.6%	142	0.5%
Wholesale Trade (50-51)	4	2.8%	19	0.5%	43	4.4%	904	6.9%	89	4.2%	2,376	8.9%
Retail Trade Summary (52-59)	33	23.1%	225	6.3%	212	21.6%	2,343	17.8%	429	20.1%	5,079	19.0%
Home Improvement	6	4.2%	34	0.9%	14	1.4%	140	1.1%	32	1.5%	358	1.3%
General Merchandise Stores	0	0.0%	0	0.0%	12	1.2%	131	1.0%	22	1.0%	588	2.2%
Food Stores	4	2.8%	10	0.3%	14	1.4%	247	1.9%	36	1.7%	625	2.3%
Auto Dealers & Gas Stations	9	6.3%	57	1.6%	39	4.0%	554	4.2%	74	3.5%	872	3.3%
Apparel & Accessory Stores	1	0.7%	6	0.2%	9	0.9%	65	0.5%	17	0.8%	124	0.5%
Furniture & Home Furnishings	2	1.4%	6	0.2%	24	2.5%	132	1.0%	47	2.2%	349	1.3%
Eating & Drinking Places	7	4.9%	77	2.1%	57	5.8%	816	6.2%	115	5.4%	1,609	6.0%
Miscellaneous Retail	5	3.5%	35	1.0%	42	4.3%	258	2.0%	86	4.0%	554	2.1%

Business Summary Report (SIC)

141 Brickton Dr, Fletcher, North Carolina, 28732



Rings: 1, 3, 5 mile radii

by SIC Codes	1 mile				3 miles				5 miles			
	Businesses		Employees		Businesses		Employees		Businesses		Employees	
	Number	%	Number	%	Number	%	Number	%	Number	%	Number	%
Finance, Insurance, Real Estate (60-67)	8	5.6%	200	5.6%	63	6.4%	528	4.0%	138	6.5%	1,339	5.0%
Banks, Savings & Lending	1	0.7%	150	4.2%	11	1.1%	248	1.9%	28	1.3%	838	3.1%
Securities Brokers	0	0.0%	0	0.0%	7	0.7%	19	0.1%	16	0.8%	38	0.1%
Insurance Carriers & Agents	0	0.0%	1	0.0%	6	0.6%	19	0.1%	13	0.6%	74	0.3%
Real Estate, Investment Offices	6	4.2%	49	1.4%	39	4.0%	241	1.8%	80	3.8%	389	1.5%
Services Summary (70-89)	60	42.0%	2,288	64.0%	354	36.1%	5,546	42.2%	773	36.3%	9,107	34.1%
Hotels & Lodging	0	0.0%	3	0.1%	21	2.1%	226	1.7%	29	1.4%	408	1.5%
Automotive Services	6	4.2%	46	1.3%	40	4.1%	251	1.9%	79	3.7%	418	1.6%
Movies & Amusements	2	1.4%	31	0.9%	26	2.6%	213	1.6%	55	2.6%	385	1.4%
Health Services	21	14.7%	1,976	55.2%	72	7.3%	3,488	26.5%	119	5.6%	4,186	15.7%
Legal Services	0	0.0%	1	0.0%	4	0.4%	9	0.1%	15	0.7%	44	0.2%
Education Inst. & Libraries	3	2.1%	102	2.9%	14	1.4%	393	3.0%	36	1.7%	972	3.6%
Other Services	27	18.9%	130	3.6%	176	18.0%	967	7.3%	440	20.7%	2,694	10.1%
Government (91-97)	0	0.0%	14	0.4%	16	1.6%	253	1.9%	35	1.6%	521	1.9%
Unclassified Establishments (99)	8	5.6%	0	0.0%	54	5.5%	0	0.0%	122	5.7%	8	0.0%
Totals (01-99)	143	100.0%	3,578	100.0%	980	100.0%	13,149	100.0%	2,130	100.0%	26,674	100.0%

Key Facts

141 Brickton Dr, Fletcher, North Carolina, 28732
Ring: 5 mile radius

KEY FACTS

54,324

Population



2.4

Average Household Size

44.2

Median Age

\$75,003

Median Household Income

EDUCATION

7.0%

No High School Diploma



23.9%

High School Graduate



28.4%

Some College/
Associate's Degree



40.7%

Bachelor's/Grad/
Prof Degree

BUSINESS



2,130

Total Businesses



26,674

Total Employees

EMPLOYMENT



61.3%

White Collar



20.3%

Blue Collar



18.4%

Services

4.6%

Unemployment Rate

INCOME



\$75,003

Median Household Income



\$42,926

Per Capita Income



\$274,872

Median Net Worth

2025 Households by income (Esri)

The largest group: \$50,000 - \$74,999 (19.3%)

The smallest group: <\$15,000 (4.0%)

Indicator ▲	Value	Diff	
<\$15,000	4.0%	-0.9%	
\$15,000 - \$24,999	6.5%	+0.6%	
\$25,000 - \$34,999	6.9%	-2.6%	
\$35,000 - \$49,999	13.3%	-1.6%	
\$50,000 - \$74,999	19.3%	-1.8%	
\$75,000 - \$99,999	13.4%	+0.8%	
\$100,000 - \$149,999	16.5%	+1.8%	
\$150,000 - \$199,999	10.8%	+2.2%	
\$200,000+	9.3%	+1.5%	

Bars show deviation from Henderson County

Demographic and Income Profile

141 Brickton Dr, Fletcher, North Carolina, 28732



Ring: 5 mile radius

Summary	Census 2020	2025	2030
Total Population	51,491	54,324	56,486
Total Households	21,268	22,695	23,724
Family Households	14,080	14,573	15,084
Average Household Size	2.40	2.37	2.36
Owner Occupied Housing Units	15,610	16,551	17,352
Renter Occupied Housing Units	5,658	6,144	6,372
Median Age	43.5	44.2	45.4

Trends 2025 - 2030	Area	State	National
Population	0.8%	0.8%	0.4%
Households	0.9%	1.1%	0.6%
Family Population	0.7%	0.9%	0.5%
Owner Occupied Housing Units	0.9%	1.2%	0.0%
Median Household Income	2.4%	2.6%	2.5%

Households by Income	2025		2030	
	Number	Percent	Number	Percent
Less than \$15,000	916	4.0%	858	3.6%
\$15,000-\$24,999	1,479	6.5%	1,212	5.1%
\$25,000-\$34,999	1,559	6.9%	1,310	5.5%
\$35,000-\$49,999	3,022	13.3%	2,792	11.8%
\$50,000-\$74,999	4,371	19.3%	4,290	18.1%
\$75,000-\$99,999	3,034	13.4%	3,138	13.2%
\$100,000-\$149,999	3,744	16.5%	4,253	17.9%
\$150,000-\$199,999	2,455	10.8%	2,989	12.6%
\$200,000 or greater	2,114	9.3%	2,883	12.2%
Median Household Income	\$75,003	-	\$84,482	-
Average Household Income	\$103,004	-	\$114,732	-
Per Capita Income	\$42,926	-	\$48,086	-

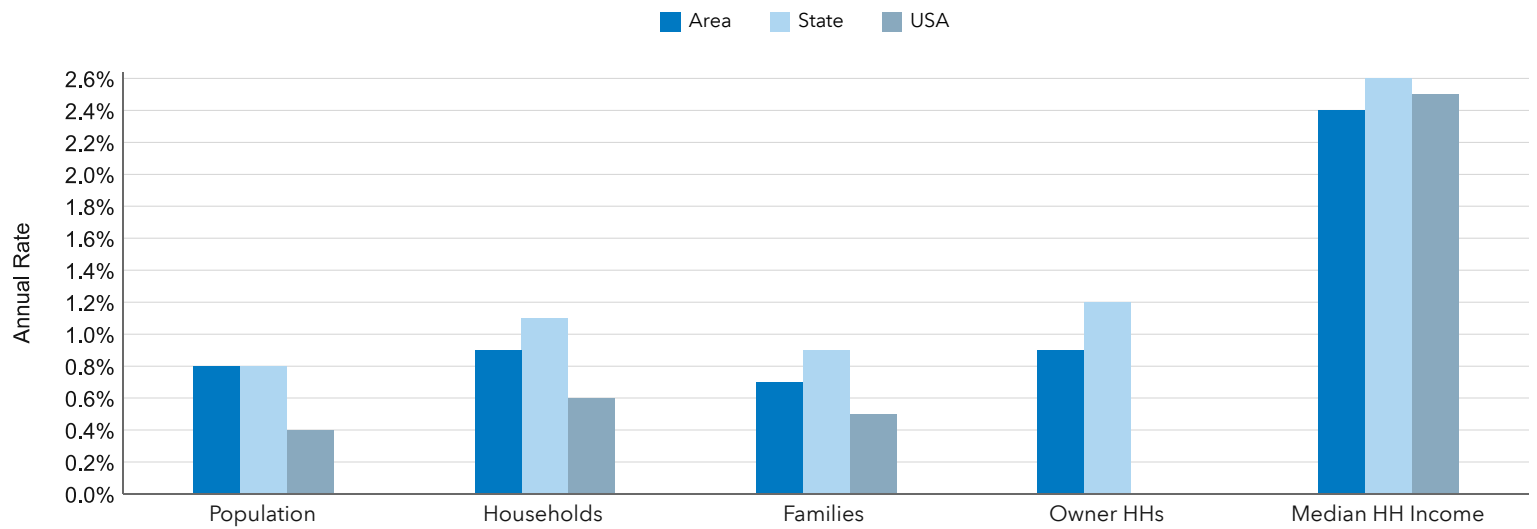
Population by Age	Census 2020		2025		2030	
	Number	Percent	Number	Percent	Number	Percent
0-4	2,583	5.0%	2,618	4.8%	2,666	4.7%
5-9	2,987	5.8%	2,963	5.5%	2,852	5.0%
10-14	3,211	6.2%	3,247	6.0%	3,221	5.7%
15-19	2,915	5.7%	3,031	5.6%	3,043	5.4%
20-24	2,282	4.4%	2,676	4.9%	2,755	4.9%
25-29	2,707	5.3%	2,676	4.9%	3,107	5.5%
30-34	3,243	6.3%	3,216	5.9%	3,012	5.3%
35-39	3,464	6.7%	3,540	6.5%	3,468	6.1%
40-44	3,326	6.5%	3,770	6.9%	3,813	6.8%
45-49	3,264	6.3%	3,558	6.5%	3,982	7.0%
50-54	3,382	6.6%	3,446	6.3%	3,652	6.5%
55-59	3,440	6.7%	3,449	6.3%	3,473	6.2%
60-64	3,474	6.8%	3,416	6.3%	3,468	6.1%
65-69	3,225	6.3%	3,390	6.2%	3,389	6.0%
70-74	3,051	5.9%	3,070	5.7%	3,273	5.8%
75-79	2,238	4.3%	2,771	5.1%	2,870	5.1%
80-84	1,337	2.6%	1,873	3.5%	2,324	4.1%
Age 85+	1,361	2.6%	1,615	3.0%	2,117	3.8%

Race and Ethnicity	Census 2020		2025		2030	
	Number	Percent	Number	Percent	Number	Percent
White Alone	40,759	79.2%	42,648	78.5%	43,652	77.3%
Black Alone	2,638	5.1%	2,769	5.1%	2,944	5.2%
American Indian	240	0.5%	253	0.5%	270	0.5%
Asian Alone	957	1.9%	1,006	1.9%	1,121	2.0%
Pacific Islander	153	0.3%	163	0.3%	178	0.3%
Some Other Race	3,005	5.8%	3,366	6.2%	3,738	6.6%
Two or More Races	3,738	7.3%	4,117	7.6%	4,583	8.1%
Hispanic (Any Race)	5,607	10.9%	6,214	11.4%	6,890	12.2%

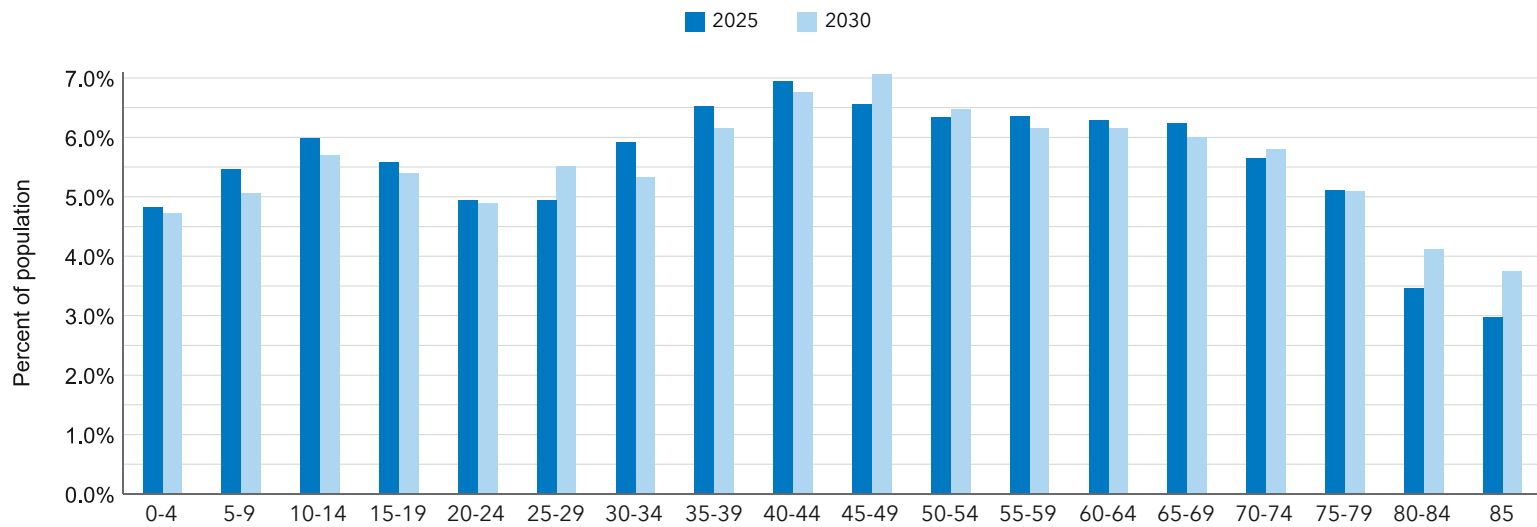
Key Indicators for 2025



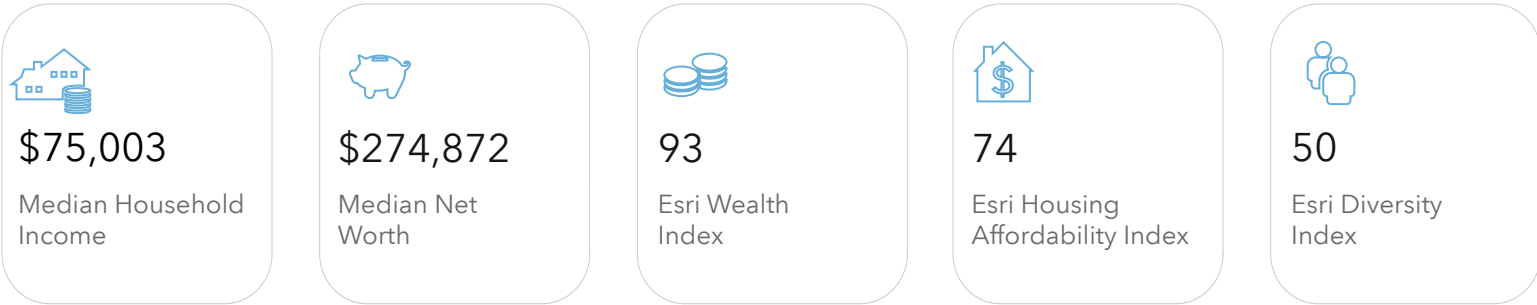
Trends: 2025 - 2030 Annual Rate



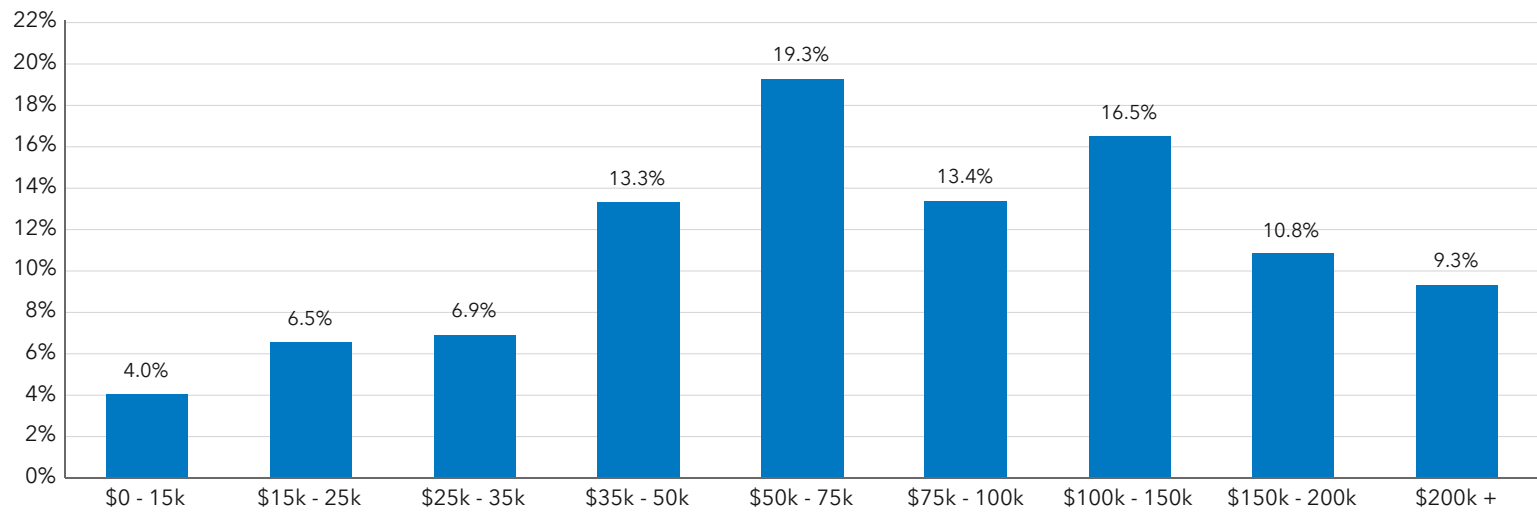
Population by Age



Key Indicators for 2025



Households by Income for 2025



Population by Race

