

OFFICE/INDUSTRIAL CONDO FOR SALE

±2,490 SF AVAILABLE

236 W. Orange Show Road, Unit 112, San Bernardino, CA 92408



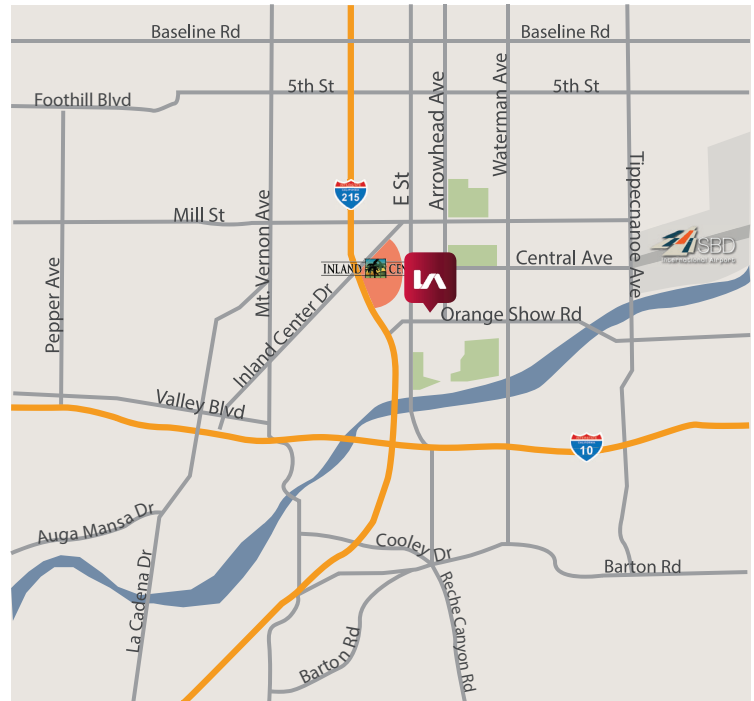
**LEE &
ASSOCIATES**

COMMERCIAL REAL ESTATE SERVICES



PROPERTY HIGHLIGHTS

- ±2,490 SF Office/Industrial Condo
- Frontage on Busy Orange Show Road
- ±907 SF Office (Verify)
- 1 Ground Level Door
- .45 GPM /3,000 SF Fire Sprinkler System (Verify)
- 200 Amps, 120/208 Volts of Power
- 14'-18' Clear Height in Warehouse
- Great Access to I-215 and I-10 Freeways



COMMERCIAL REAL ESTATE SERVICES
Corporate DRE#: 01048055
www.lee-associates.com

ALEXEY ZABOLOTSKIKH

951.276.3606 | DRE#: 01428540
ALEX@LEERIVERSIDE.COM

CRAIG YOCUM

951.276.3625 | DRE#: 00942165
CYOCUM@LEERIVERSIDE.COM

TRENT KIMSEY

951.276.3649 | DRE#: 02066678
TKIMSEY@LEERIVERSIDE.COM

3240 Mission Inn Avenue, Riverside, CA 92507 | 951.276.3600 | Corporate DRE#: 01048055 | www.lee-associates.com

No warranty or representation has been made to the accuracy of the foregoing information. Terms of sale or lease and availability are subject to change or withdrawal without notice. Lee & Associates Commercial Real Estate Services, Inc. - Riverside.

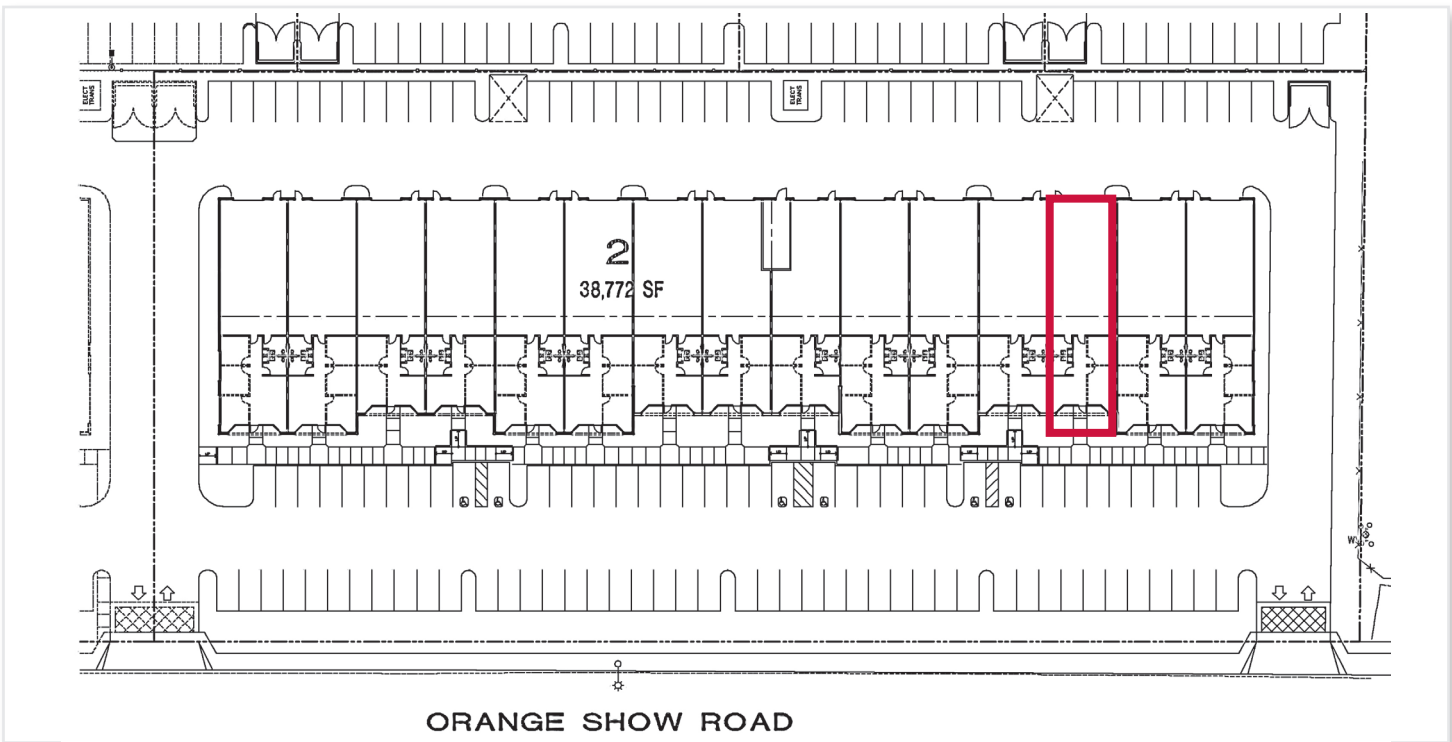
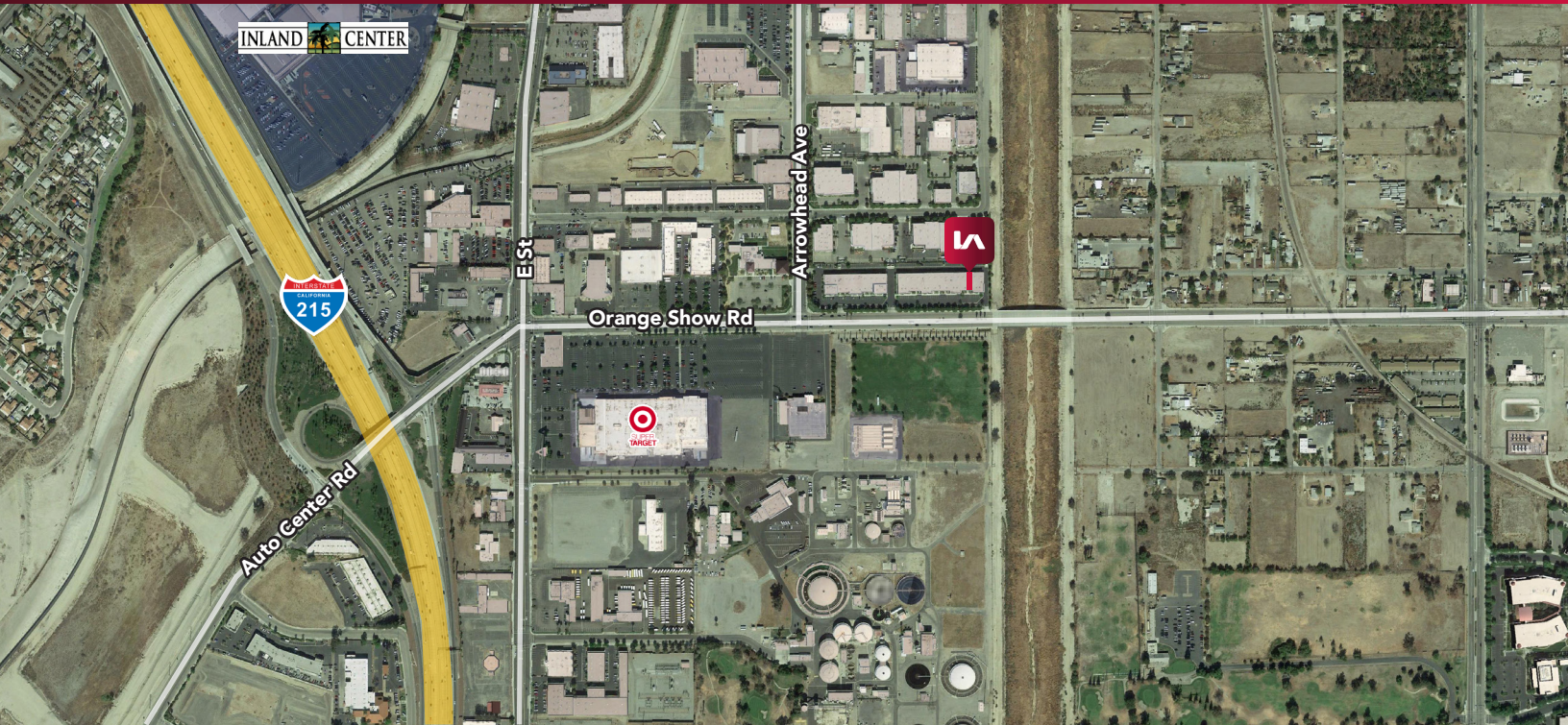
OFFICE/INDUSTRIAL CONDO FOR SALE

±2,490 SF AVAILABLE

236 W. Orange Show Road, Unit 112, San Bernardino, CA 92408



COMMERCIAL REAL ESTATE SERVICES



LEE & ASSOCIATES
COMMERCIAL REAL ESTATE SERVICES
Corporate DRE#: 01048055
www.lee-associates.com

ALEXEY ZABOLOTSKI KH
951.276.3606 | DRE#: 01428540
ALEX@LEERIVERSIDE.COM

CRAIG YOCUM
951.276.3625 | DRE#: 00942165
CYOCUM@LEERIVERSIDE.COM

TRENT KIMSEY
951.276.3649 | DRE#: 02066678
TKIMSEY@LEERIVERSIDE.COM

3240 Mission Inn Avenue, Riverside, CA 92507 | 951.276.3600 | Corporate DRE#: 01048055 | www.lee-associates.com

No warranty or representation has been made to the accuracy of the foregoing information. Terms of sale or lease and availability are subject to change or withdrawal without notice. Lee & Associates Commercial Real Estate Services, Inc. - Riverside.