

230 Eva St

38,837 SF Available

230 Eva St, St. Paul MN 55107



Contact Us

SANDY BARIN

Senior Vice President

+1 952 924 4816

sandy.barin@cbre.com

230 Eva St
230 Eva St, St. Paul MN 55107

For Sale



Total SF
+ 38,837 SF (2.58 Acres)

Docks
+1

Drive Ins
+1

Year Built
+ 1968

Parking
+ 48 Stalls

Clear Height
+ 16'

2025 Est. Taxes
+ \$123,890.03

Sale Price
+ Negotiable

Zoning
+ I-1

2 exterior DH loading positions

Overview

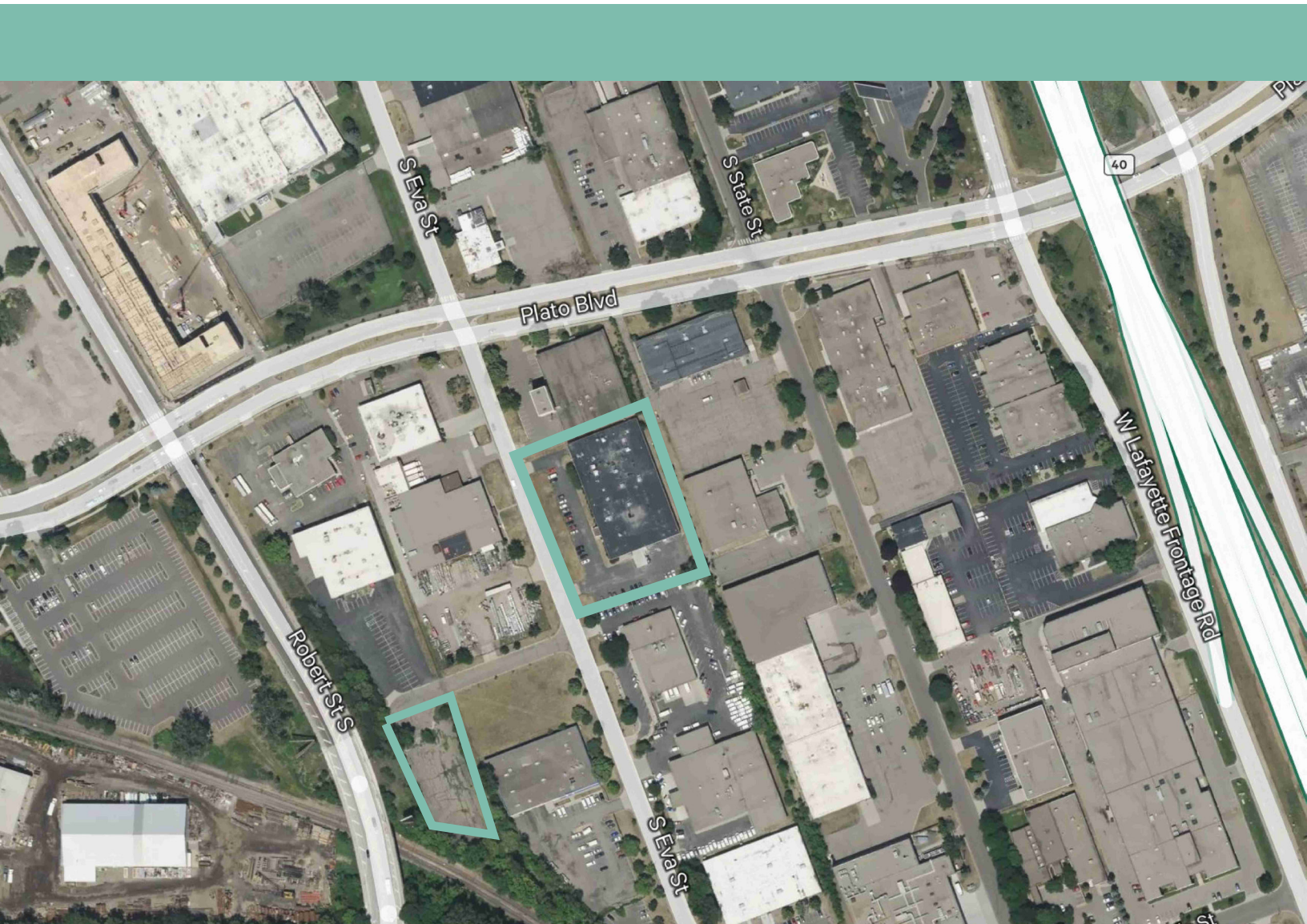
230 Eva St is an Industrial manufacturing building with 38,837 SF available for sale. Great access to Highway 52 through Plato Blvd, this property brings great opportunities to a user looking to be in St. Paul.

Floor Plan



230 Eva St
230 Eva St, St. Paul MN 55107

For Sale



Contact Us

SANDY BARIN

Senior Vice President

+1 952 924 4816

sandy.barin@cbre.com

CBRE

© 2025 CBRE, Inc. All rights reserved. This information has been obtained from sources believed reliable but has not been verified for accuracy or completeness. CBRE, Inc. makes no guarantee, representation or warranty and accepts no responsibility or liability as to the accuracy, completeness, or reliability of the information contained herein. You should conduct a careful, independent investigation of the property and verify all information. Any reliance on this information is solely at your own risk. CBRE and the CBRE logo are service marks of CBRE, Inc. All other marks displayed on this document are the property of their respective owners, and the use of such marks does not imply any affiliation with or endorsement of CBRE. Photos herein are the property of their respective owners. Use of these images without the express written consent of the owner is prohibited.