

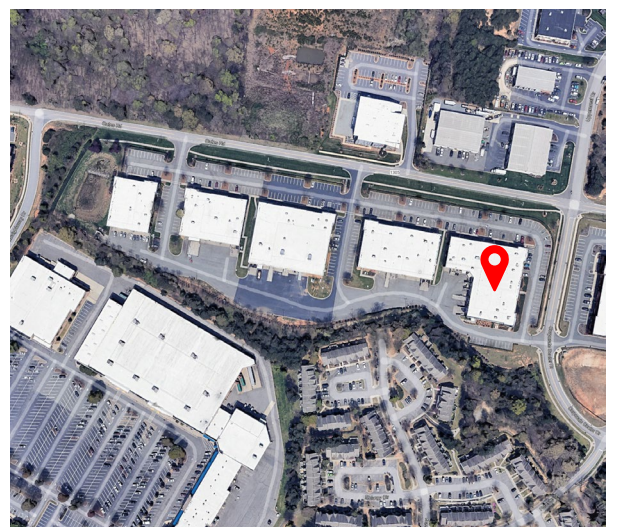
Lakefield Corporate Park

307-H Oates Road
 Mooresville, NC



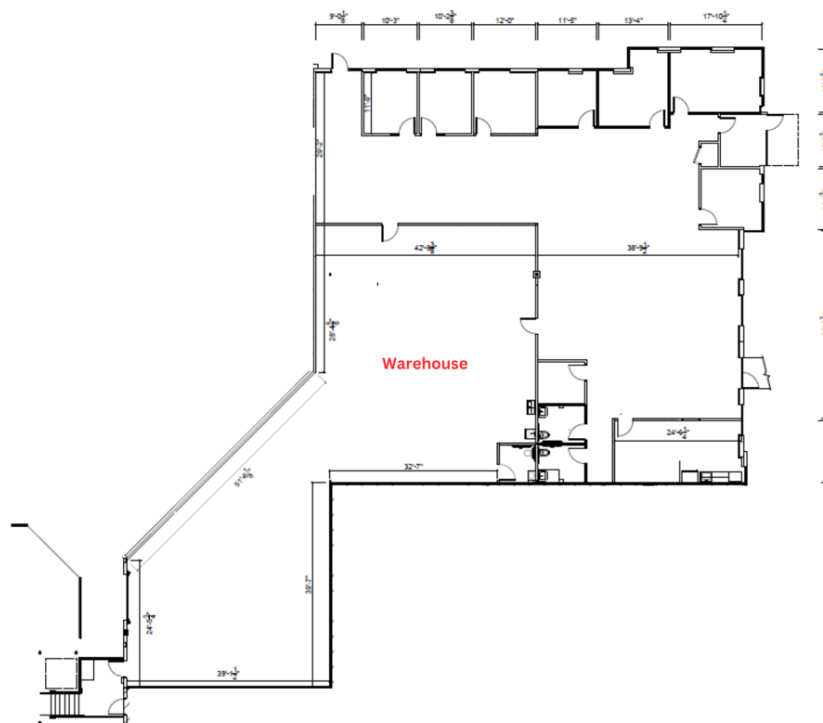
Property Features

- +/- 8,637 SF office/warehouse
- Ideal for Lowe's vendors
- Easy access to I-77 from Hwy 150 and Hwy 21
- Excellent locations just minutes from Lake Norman
 - I-77 Exit 36/Hwy 150 +/-0.05 mile
 - Lowe's Corporate Headquarters +/-4.9 mile
- Floor-to-ceiling storefront glass entryway



Building Specifications

Total Available:	8,637 SF	Clear Height:	18'
Date Available:	Now	Sprinkler:	Wet
Year Built:	2008	Loading Doors:	None
Construction:	Tilt concrete	Parking:	3:1,000 SF



Contact Us

Anne Johnson
 Senior Vice President
 +1 704 331 1225
 Anne.johnson@cbre.com

Bryan Crutcher
 Senior Vice President
 +1 704 331 1215
 Bryan.crutcher@cbre.com

Alek Salfia
 First Vice President
 +1 704 619 8118
 Alek.salfia@cbre.com

© 2023 CBRE, Inc. All rights reserved. This information has been obtained from sources believed reliable but has not been verified for accuracy or completeness. CBRE, Inc. makes no guarantee, representation or warranty and accepts no responsibility or liability as to the accuracy, completeness, or reliability of the information contained herein. You should conduct a careful, independent investigation of the property and verify all information. Any reliance on this information is solely at your own risk. CBRE and the CBRE logo are service marks of CBRE, Inc. All other marks displayed on this document are the property of their respective owners, and the use of such marks does not imply any affiliation with or endorsement of CBRE. Photos herein are the property of their respective owners. Use of these images without the express written consent of the owner is prohibited.