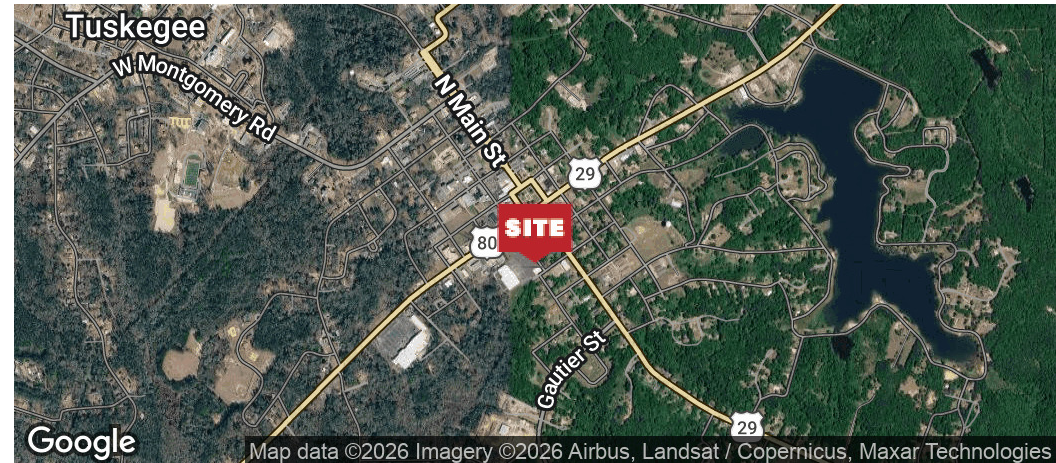


RUSSELL PLAZA - Tuskegee, AL

RUSSELL PLAZA SHOPPING CENTER | 204 SOUTH ELM STREET, TUSKEGEE, AL 36083



OFFERING SUMMARY

Available SF: 1,572 - 22,500 SF

Lot Size: 5.0 Acres

Year Built: 1972

Building Size: 53,000

PROPERTY OVERVIEW

Established community shopping center anchored by Piggly Wiggly, Citi Trends. 1572 - 22,500 SF anchor space available for rent. Located in the heart of Tuskegee near Tuskegee University.

PROPERTY HIGHLIGHTS

- Established community shopping center located in the heart of Tuskegee near Tuskegee University.
- Anchored by Piggly Wiggly, Citi Trends. Surrounding retailers include Dollar General, Dollar Tree, Auto Zone, CVS, Family Dollar.
- 1572 - 22,500 SF anchor space available for rent.
- Check out more information for Russell Plaza - Tuskegee, AL here: <https://realestatesoutheast.com/home/properties/?propertyId=Tuskegee-lease>

Space Available

RUSSELL PLAZA SHOPPING CENTER | 204 SOUTH ELM STREET, TUSKEGEE, AL 36083



AVAILABLE SPACES

SUITE	TENANT	SIZE (SF)	LEASE TYPE	LEASE RATE	DESCRIPTION
■ 202-204 Elm Street - 200	Available	22,500 SF	NNN	\$5.00 SF/yr	Anchor Space. Former Roses.
■ 202-204 Elm Street - 400	Available	1,572 SF	NNN	\$14.00 SF/yr	Chicken wing deli / currently occupied by Tiger Bites. Restaurant space.
■ 202-204 Elm Street - 600	Available	2,128 SF	NNN	\$14.00 SF/yr	Former worship center.

