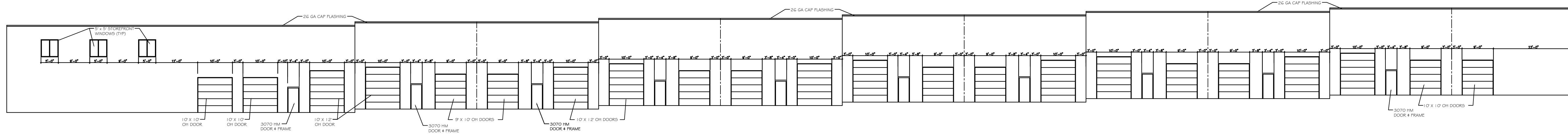
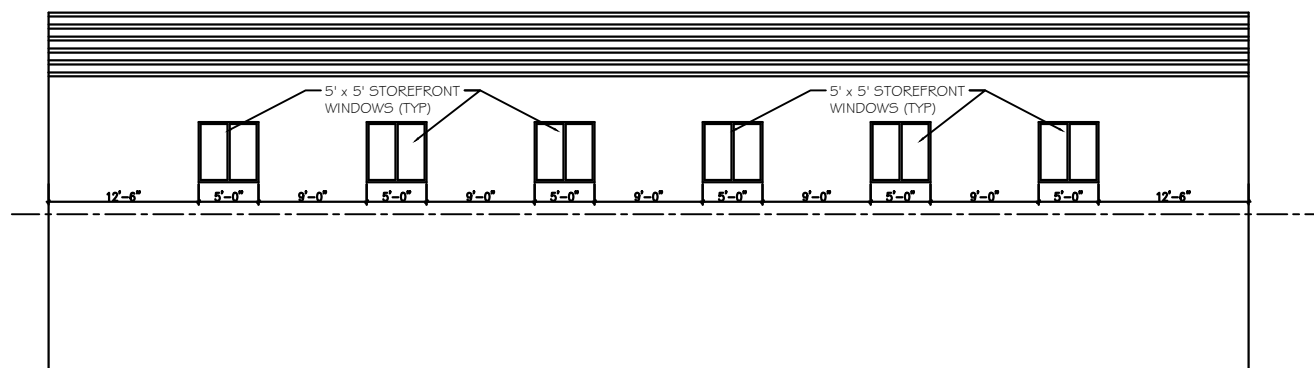


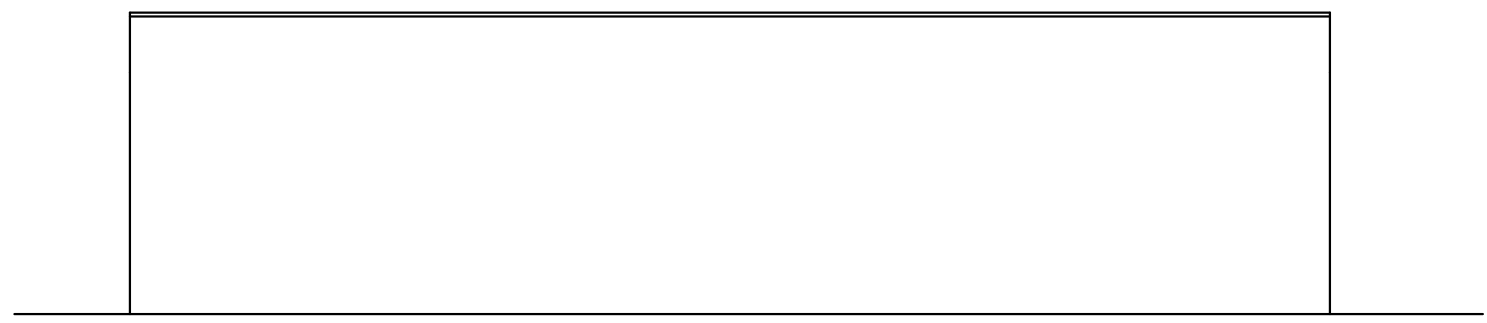
FLOOR PLAN  
SCALE: 1/8" = 1'-0"



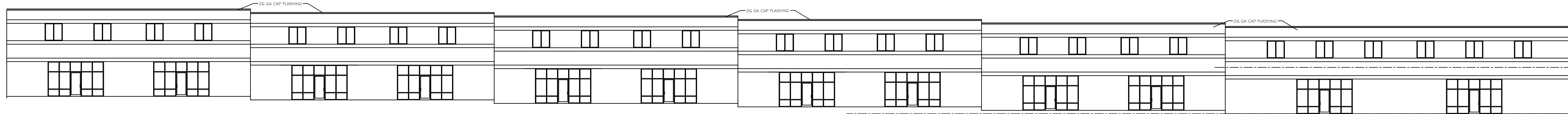
BACK ELEVATION  
SCALE: 1/8" = 1'-0"



RIGHT SIDE ELEVATION  
SCALE: 1/8" = 1'-0"



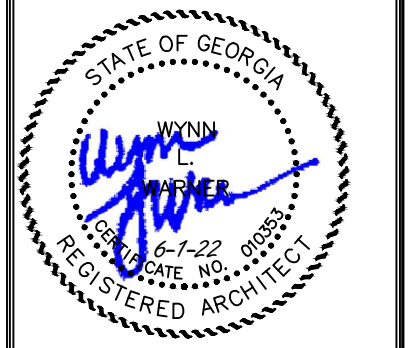
LEFT SIDE ELEVATION  
SCALE: 1/8" = 1'-0"



FRONT ELEVATION  
SCALE: 1/8" = 1'-0"

REVISIONS

Date



THIS DOCUMENT, THE IDEAS AND DESIGNS INCORPORATED HEREIN, AS AN INSTRUMENT OF PROFESSIONAL SERVICE, IS THE PROPERTY OF WYNN L. WARNER ARCHITECT AND IS NOT TO BE USED, IN WHOLE OR IN PART, FOR ANY OTHER PROJECT WITHOUT THE WRITTEN AUTHORIZATION OF WYNN L. WARNER ARCHITECT

WYNN L. WARNER ARCHITECT  
5292 CAMDEN LAKE PARKWAY  
ACWORTH, GA 30101  
(770)365-6638

ONE-STORY WAREHOUSE BUILDING  
PEACHTREE INDUSTRIAL BOULEVARD  
BUFORD, GEORGIA 30XXX

Drawn By: WLW  
Checked By: WLW  
Date:  
Job No.:

Drawing Number  
**A01**



RELEASED FOR CONSTRUCTION