

For Lease

Retail
Industrial/Flex



3009 FOUR WHEEL DRIVE
STE. B, LAWRENCE, KS 66047



The south unit of this flex/warehouse building, located near 31st and Iowa Street in Lawrence, is now available for lease. This space includes an updated office/showroom area with heating and cooling, two restrooms, and a spacious warehouse featuring 16-foot ceilings. It also has a drive-in door and a mezzanine. The property provides three-phase power and convenient access to the K-10 Highway.



PROPERTY DETAILS

- Built in 1995
- CS Zoning
- Lot Size: 13,571 SF
- Building Size: 5,159 SF
- Available Space: 2,750 SF
- Lease Rate: \$2,800 per month, plus utilities and shared common area maintenance



FOUNDATIONS
COMMERCIAL REAL ESTATE



www-foundationscommercial.com

Landon Berquist



landon@foundationscommercial.com

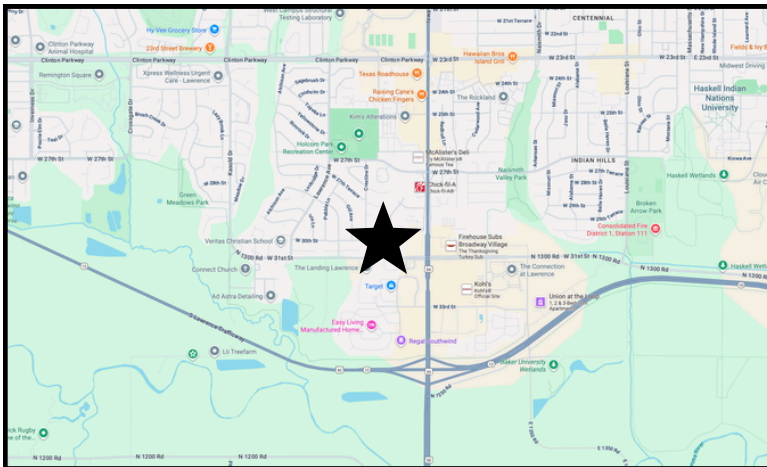
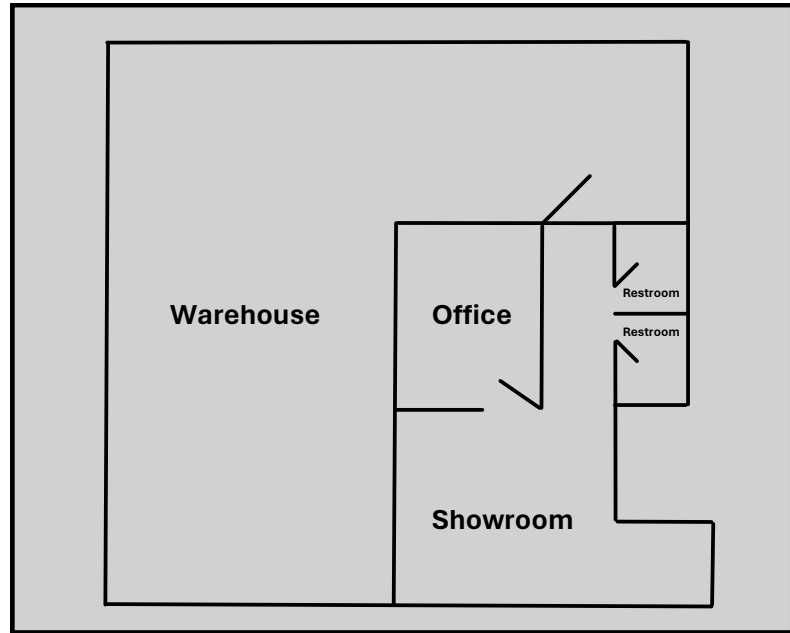
785-764-3433

For Lease

Retail
Industrial/Flex



3009 FOUR WHEEL DRIVE
STE. B, LAWRENCE, KS 66047



www-foundationscommercial.com

Landon Berquist



landon@foundationscommercial.com

785-764-3433

