

OFFICE CONDOMINIUM FOR SALE



BLACKSTONE VALLEY OFFICE PARK

6 Blackstone Valley Place, Building 5, Units 515, 520 & 525, Lincoln, RI 02865

LEEDS MITCHELL IV, SIOR
Principal Broker, Partner
401.751.3200 x3307
leeds@mgcommercial.com

MG COMMERCIAL
365 Eddy Street, Penthouse Suite
Providence, RI 02903
401.751.3200 | mgcommercial.com

PROPERTY SUMMARY



PROPERTY DESCRIPTION

The Blackstone Valley Office Park is an 8-building, professionally managed condominium office park. This well appointed, 12,024 SF, top floor office suite in Building 5 boasts ample open work area, perimeter offices, kitchen/breakroom, multiple conference rooms and large training rooms. In addition, there is ample natural light throughout, via its 3-sided ribbon window line.

PROPERTY HIGHLIGHTS

- Ample on-site parking
- Established condo association
- Immediate access to Route 146 and Interstate 295
- Surrounded by countless area amenities
- Estimated Taxes: \$33,851.74
- New HVAC
- New elevators

LOCATION DESCRIPTION

The Blackstone Valley Office Park is located just off of Route 116, in Lincoln, RI. The park is under a mile from Routes 146 & 295 and just 15 minutes from Providence and 50 minutes to Boston. The property sits adjacent to the Amica campus and is a short drive to the CVS campus. Plentiful area amenities include the Lincoln Mall and numerous other dining options.

OFFERING SUMMARY

Sale Price:	\$749,000
Sale Price Reduced From:	\$1,195,000
Building Size:	12,024 SF

LEEDS MITCHELL IV, SIOR

Principal Broker, Partner
401.751.3200 x3307
leeds@mgcommercial.com

365 Eddy Street, Penthouse Suite
Providence, RI 02903
mgcommercial.com



ADDITIONAL PHOTOS

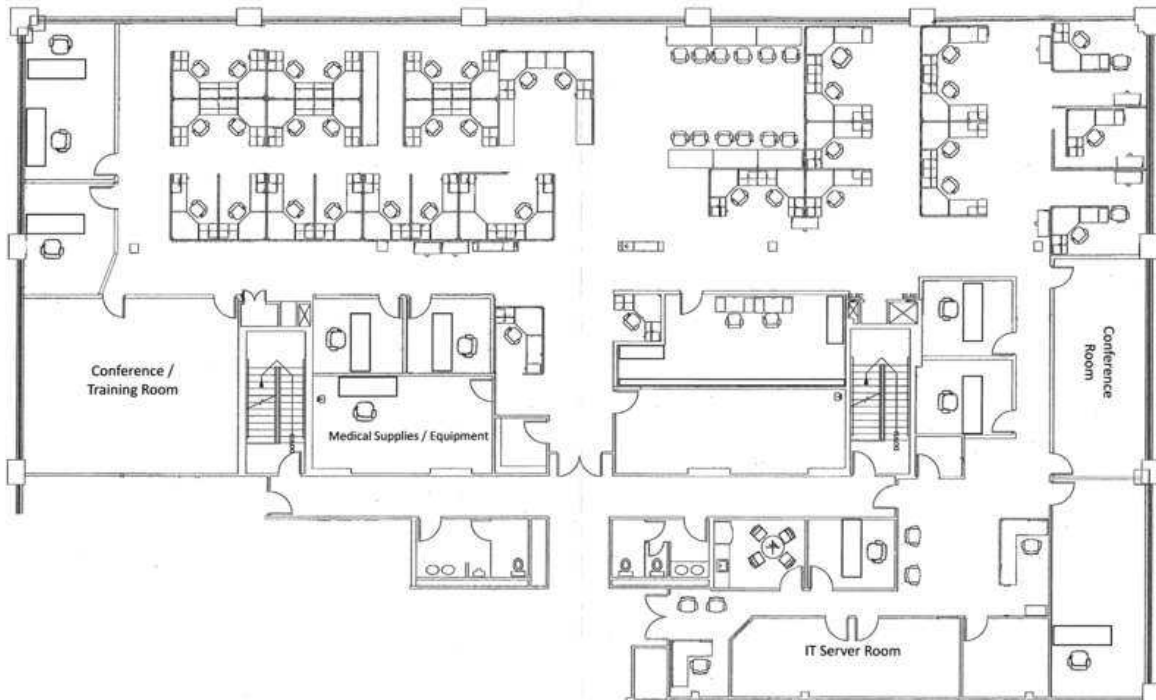
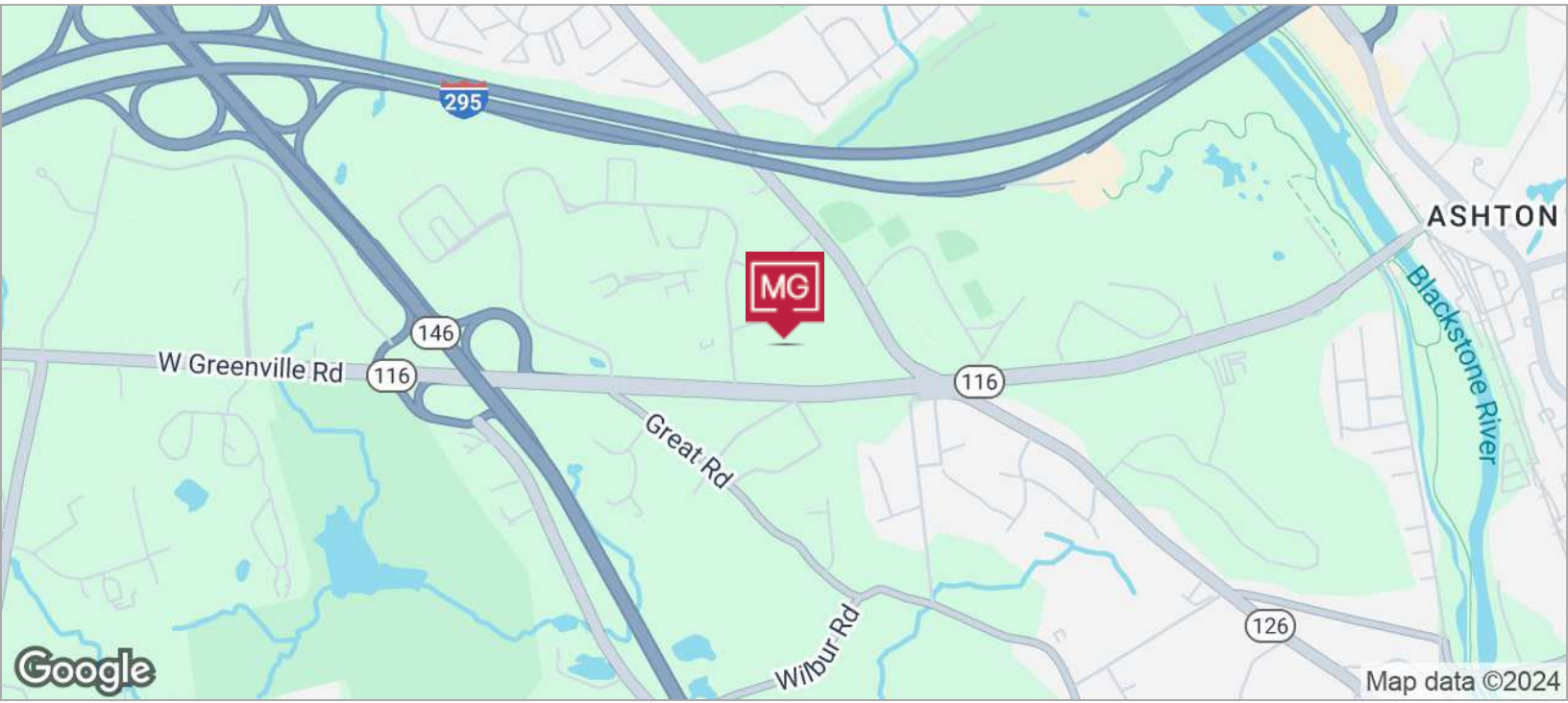


LEEDS MITCHELL IV, SIOR
Principal Broker, Partner
401.751.3200 x3307
leeds@mgcommercial.com

365 Eddy Street, Penthouse Suite
Providence, RI 02903
mgcommercial.com



LOCATION MAP/ FLOOR PLAN



LEEDS MITCHELL IV, SIOR
Principal Broker, Partner
401.751.3200 x3307
leeds@mgcommercial.com

365 Eddy Street, Penthouse Suite
Providence, RI 02903
mgcommercial.com

