

THE LANDINGS

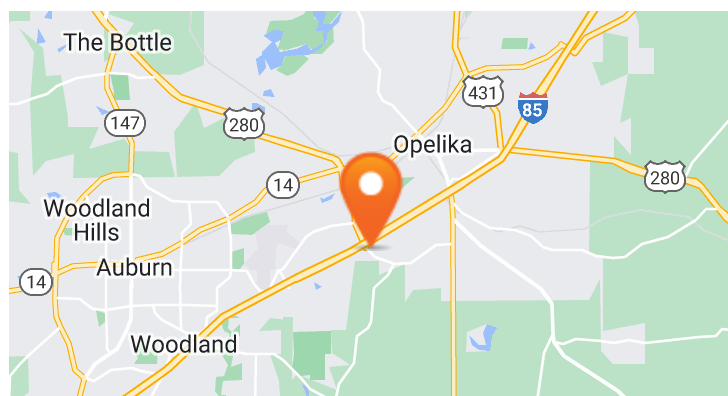
SEC I-85 & Highway 280, Opelika, AL 36801

EXECUTIVE SUMMARY



DEMOGRAPHICS

	3 MILES	5 MILES	10 MILES
POPULATION	23,485	59,051	110,010
DAYTIME POPULATION	31,707	62,534	116,584
HOUSHOLDS	9,261	24,581	44,542
AVERAGE HH INCOME	\$66,079	\$71,917	\$68,281



AREA RETAILERS

Kroger, Lowe's, Home Depot, Target, Aldi, TJ Maxx, Ross, Kohl's, Bed Bath & Beyond, Hobby Lobby, Dick's Sporting Goods, Chick-Fil-A, and Starbucks

PROPERTY HIGHLIGHTS

- Available: Retail, Mixed Use & Hospitality parcels
- Join Alabama's first Quick Trip C-Store along with proposed hotels and entertainment uses
- The population within the Auburn-Opelika MSA is 165,000 with a trade area over 200,000
- The Auburn-Opelika metro area grew by about 23,000 people between 2010 and 2018, according to the latest estimates from the U.S. Census Bureau.
- Auburn-Opelika was named a top five growth city in America by U-Haul
- Last remaining corner at the I-85 & Highway 280 Intersection
- Utilities, detention, and access roads will be installed by the developer
- Lots are not platted, call for pricing

EXCLUSIVE AGENT(S)

RAY JONES, CCIM • ray.jones@tscg.com • 334.332.8424
 ALEXANDER BARINEAU • alexander.barineau@tscg.com • 205.776.6715



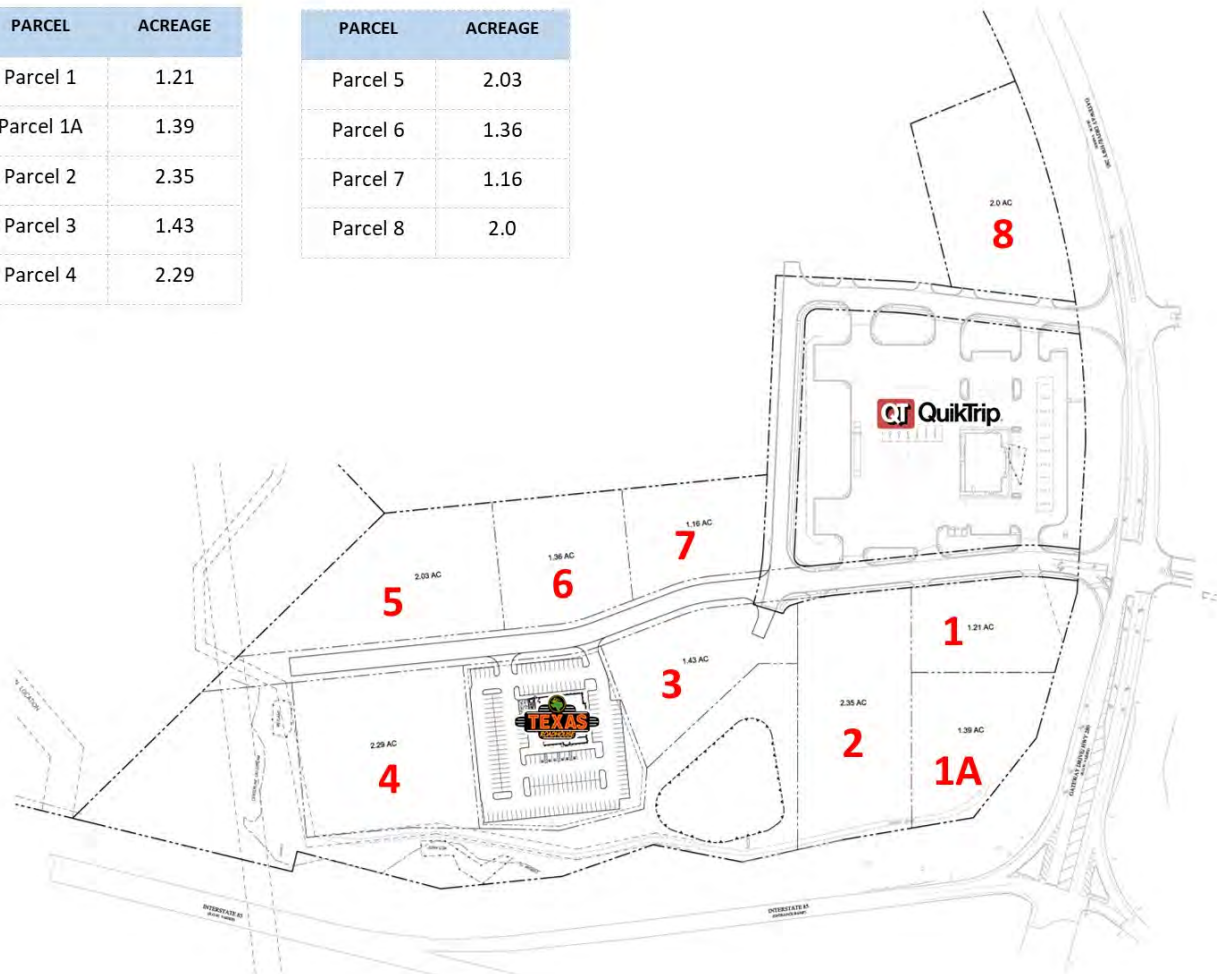
THE LANDINGS

SEC I-85 & Highway 280, Opelika, AL 36801

SITE PLAN

PARCEL	ACREAGE
Parcel 1	1.21
Parcel 1A	1.39
Parcel 2	2.35
Parcel 3	1.43
Parcel 4	2.29

PARCEL	ACREAGE
Parcel 5	2.03
Parcel 6	1.36
Parcel 7	1.16
Parcel 8	2.0



EXCLUSIVE AGENT(S)

RAY JONES, CCIM • ray.jones@tscg.com • 334.332.8424

ALEXANDER BARINEAU • alexander.barineau@tscg.com • 205.776.6715





- ALDI
- SONIC
- SUBWAY
- ZAXBY'S
- Arbys
- Charley's
- AMERICA'S THIRTIESTORES
- Kroger
- THE HOME DEPOT
- PET SMART
- verizon
- McDonald's
- LONGHORN STEAKHOUSE
- LOWE'S
- MICROTEL
- ANYTIME FITNESS
- SALLY BEAUTY
- Great Clips
- Party City
- WORLD MARKET
- HOBBY LOBBY
- RACK ROOM SHOES
- Target
- ULTA
- DICK'S SPORTING GOODS
- BED BATH & BEYOND
- KOHL'S
- Kirkland's
- Newk's
- Starbucks
- Waffle House
- COOK OUT
- Firestone
- Office DEPOT
- ROSS
- BEST BUY
- THE CHILDREN'S PLACE
- petco
- five BELOW
- BAM!
- rue21
- OLD NAVY
- TJ-maxx
- Charter
- Fairfield
- CROSSROADS AT OPEIKA
- AspenDental
- BURGERFI
- TAZIKIS
- at&t
- Wendy's
- SPORTS AUTHORITY
- SportClips
- sleep number
- MATTRESSFIRM
- Ashley HOMESTORE
- Hampton
- QuikTrip
- Freddy's STEAKBURGERS
- LAQUINTA
- HOME2
- amc

THE LANDINGS



Auburn & Opelika, Alabama

Major Retail

April 2019

