

FOR SALE  
680 E JOHN STREET, MARKESAN, WI 53946



# PROPERTY OVERVIEW

Total Building SF:	267,758 SF
Office SF:	10,398 SF
Site Size:	44.25 Acres
Zoning:	I-1, A-1
Clear Height:	15' - 29'
Docks:	13
Drive-Ins:	3
Construction:	Precast, Masonry, Metal
Lighting:	LED
Sprinkler:	Wet
Power:	480/277V - 4,000 AMP
HVAC:	Modine Heat
Utilities:	Alliant Energy
Internet Service Provider:	CenturyLink/Lumen

## Economics

Sale Price:	\$3,759,925
Property Taxes:	\$47,023 (2023)
Tax Key Parcels:	251007100000, 010001080000, 010001120000



## Features

- 4 main warehouse components that total +-144,000 SF @ 29' clear
- +-75,000 SF of 15'4" clear canning/processing space
- Various original structures and pole barns
- Active Wisconsin Southern Rail with direct load access to 8 rail docks

**JEFF HOFFMAN**  
PRINCIPAL  
414.203.3038  
jhoffman@boerke.com

**CHAD VANDE ZANDE**  
PRINCIPAL  
414.203.3049  
cvandezande@boerke.com

**NICK UNGER**  
PRINCIPAL  
414.203.3016  
nunger@boerke.com

**LINDSEY COAKLEY**  
REAL ESTATE ADVISOR  
414.203.3025  
lcoakley@boerke.com

**MILWAUKEE OFFICE**  
731 N Jackson Street  
Suite 700  
Milwaukee, WI 53202

**MADISON OFFICE**  
33 E Main Street  
Suite 241  
Madison, WI 53703

[Boerke.com](https://www.boerke.com)

The Boerke Company, Inc. / Independently Owned and Operated / A Member of the Cushman & Wakefield Alliance

Cushman & Wakefield Copyright 2024. No warranty or representation, express or implied, is made to the accuracy or completeness of the information contained herein, and same is submitted subject to errors, omissions, change of price, rental or other conditions, withdrawal without notice, and to any special listing conditions imposed by the property owner(s). As applicable, we make no representation as to the condition of the property (or properties) in question.

FOR SALE  
680 E JOHN STREET, MARKESAN, WI 53946



# BUILDING IMAGES



**JEFF HOFFMAN**  
PRINCIPAL  
414.203.3038  
jhoffman@boerke.com

**CHAD VANDE ZANDE**  
PRINCIPAL  
414.203.3049  
cvandezande@boerke.com

**NICK UNGER**  
PRINCIPAL  
414.203.3016  
nunger@boerke.com

**LINDSEY COAKLEY**  
REAL ESTATE ADVISOR  
414.203.3025  
lcoakley@boerke.com

**MILWAUKEE OFFICE**  
731 N Jackson Street  
Suite 700  
Milwaukee, WI 53202

**MADISON OFFICE**  
33 E Main Street  
Suite 241  
Madison, WI 53703

[Boerke.com](http://Boerke.com)

The Boerke Company, Inc. / Independently Owned and Operated / A Member of the Cushman & Wakefield Alliance

Cushman & Wakefield Copyright 2024. No warranty or representation, express or implied, is made to the accuracy or completeness of the information contained herein, and same is submitted subject to errors, omissions, change of price, rental or other conditions, withdrawal without notice, and to any special listing conditions imposed by the property owner(s). As applicable, we make no representation as to the condition of the property (or properties) in question.

FOR SALE  
680 E JOHN STREET, MARKESAN, WI 53946



# BUILDING IMAGES



**JEFF HOFFMAN**  
PRINCIPAL  
414.203.3038  
jhoffman@boerke.com

**CHAD VANDE ZANDE**  
PRINCIPAL  
414.203.3049  
cvandezande@boerke.com

**NICK UNGER**  
PRINCIPAL  
414.203.3016  
nunger@boerke.com

**LINDSEY COAKLEY**  
REAL ESTATE ADVISOR  
414.203.3025  
lcoakley@boerke.com

**MILWAUKEE OFFICE**  
731 N Jackson Street  
Suite 700  
Milwaukee, WI 53202

**MADISON OFFICE**  
33 E Main Street  
Suite 241  
Madison, WI 53703

[Boerke.com](http://Boerke.com)

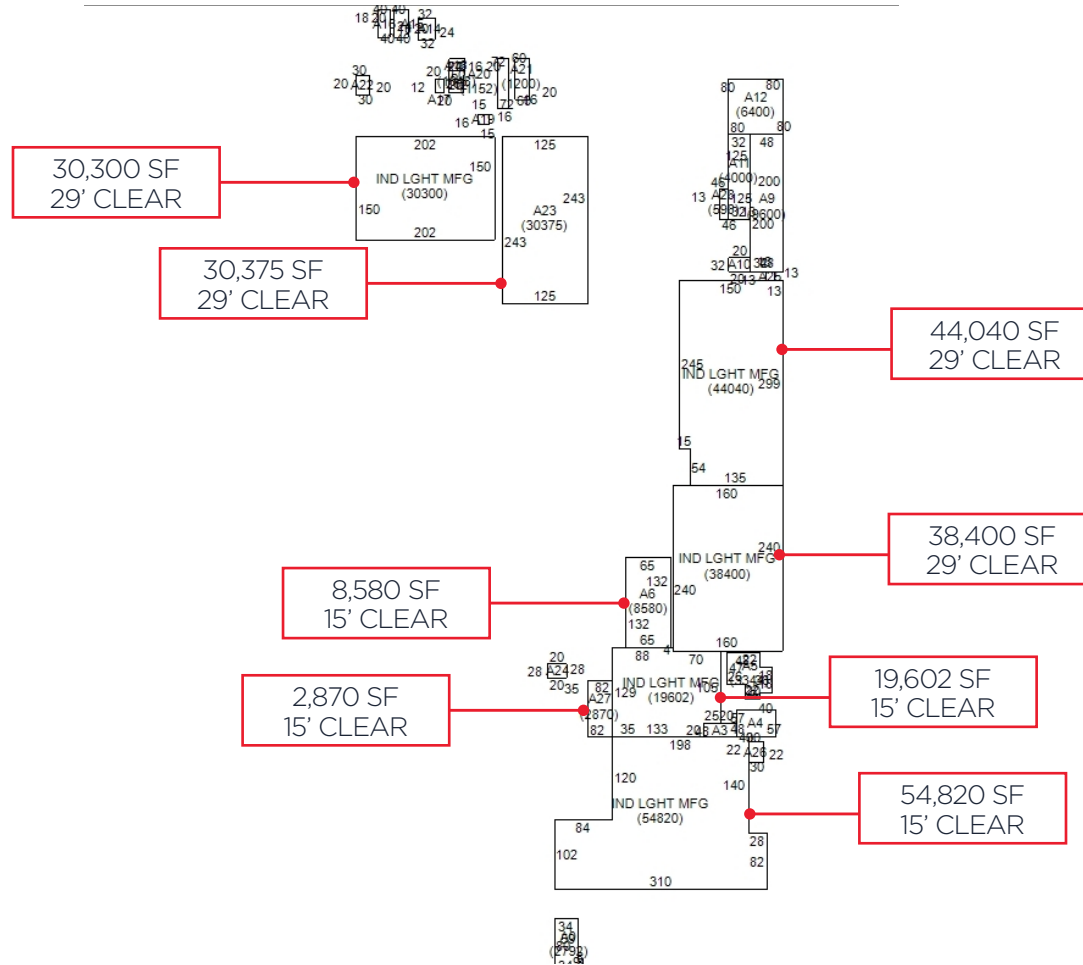
The Boerke Company, Inc. / Independently Owned and Operated / A Member of the Cushman & Wakefield Alliance

Cushman & Wakefield Copyright 2024. No warranty or representation, express or implied, is made to the accuracy or completeness of the information contained herein, and same is submitted subject to errors, omissions, change of price, rental or other conditions, withdrawal without notice, and to any special listing conditions imposed by the property owner(s). As applicable, we make no representation as to the condition of the property (or properties) in question.

FOR SALE  
680 E JOHN STREET, MARKESAN, WI 53946



# MAIN CAMPUS FLOOR PLAN



**JEFF HOFFMAN**  
PRINCIPAL  
414.203.3038  
jhoffman@boerke.com

**CHAD VANDE ZANDE**  
PRINCIPAL  
414.203.3049  
cvandezande@boerke.com

**NICK UNGER**  
PRINCIPAL  
414.203.3016  
nunger@boerke.com

**LINDSEY COAKLEY**  
REAL ESTATE ADVISOR  
414.203.3025  
lcoakley@boerke.com

**MILWAUKEE OFFICE**  
731 N Jackson Street  
Suite 700  
Milwaukee, WI 53202

**MADISON OFFICE**  
33 E Main Street  
Suite 241  
Madison, WI 53703

[Boerke.com](http://Boerke.com)

The Boerke Company, Inc. / Independently Owned and Operated / A Member of the Cushman & Wakefield Alliance

Cushman & Wakefield Copyright 2024. No warranty or representation, express or implied, is made to the accuracy or completeness of the information contained herein, and same is submitted subject to errors, omissions, change of price, rental or other conditions, withdrawal without notice, and to any special listing conditions imposed by the property owner(s). As applicable, we make no representation as to the condition of the property (or properties) in question.

FOR SALE  
680 E JOHN STREET, MARKESAN, WI 53946



# INCLUDED PARCELS



**JEFF HOFFMAN**  
PRINCIPAL  
414.203.3038  
jhoffman@boerke.com

**CHAD VANDE ZANDE**  
PRINCIPAL  
414.203.3049  
cvandezande@boerke.com

**NICK UNGER**  
PRINCIPAL  
414.203.3016  
nunger@boerke.com

**LINDSEY COAKLEY**  
REAL ESTATE ADVISOR  
414.203.3025  
lcoakley@boerke.com

**MILWAUKEE OFFICE**  
731 N Jackson Street  
Suite 700  
Milwaukee, WI 53202

**MADISON OFFICE**  
33 E Main Street  
Suite 241  
Madison, WI 53703

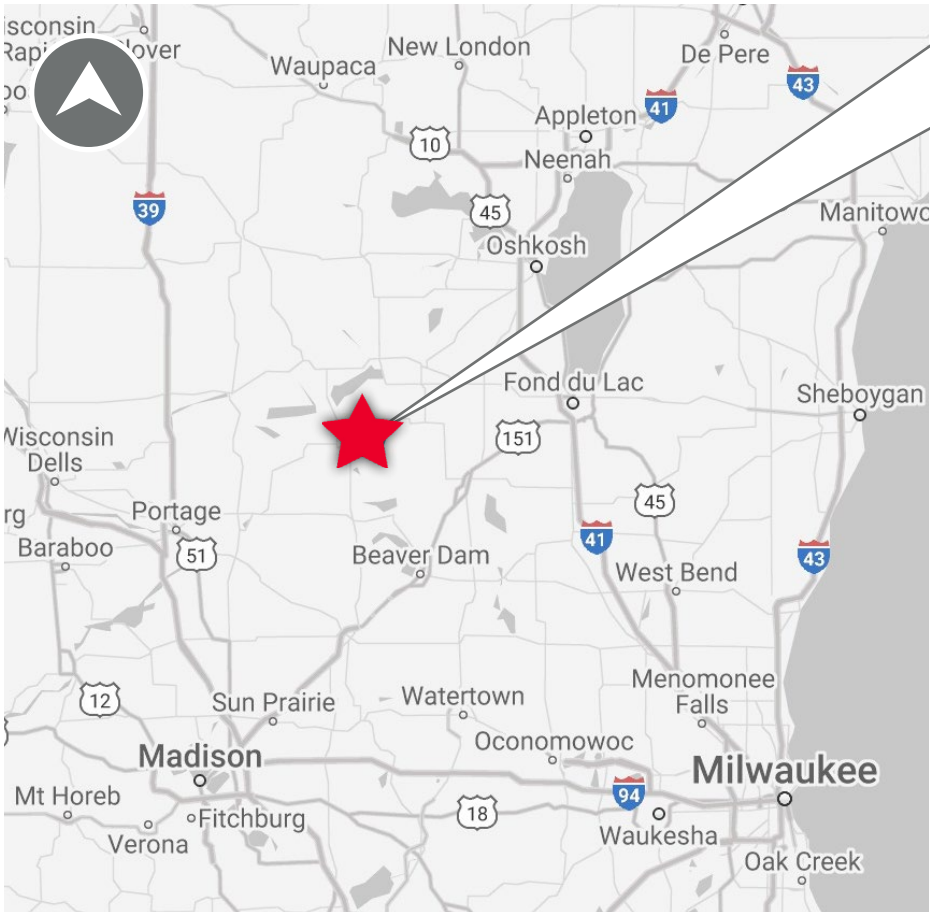
[Boerke.com](http://Boerke.com)

The Boerke Company, Inc. / Independently Owned and Operated / A Member of the Cushman & Wakefield Alliance

Cushman & Wakefield Copyright 2024. No warranty or representation, express or implied, is made to the accuracy or completeness of the information contained herein, and same is submitted subject to errors, omissions, change of price, rental or other conditions, withdrawal without notice, and to any special listing conditions imposed by the property owner(s). As applicable, we make no representation as to the condition of the property (or properties) in question.

**FOR SALE**  
**680 E JOHN STREET, MARKESAN, WI 53946**

# AREA **MAP**



## DISTANCE TO KEY AREAS

AREA	MILES
HIGHWAY 151 / BEAVER DAM	22
I-39	35
I-41 / FOND DU LAC	30
MITCHELL INTERNATIONAL AIRPORT	99
OSHKOSH	37
APPLETON	56
GREEN BAY	86
MADISON	60

**JEFF HOFFMAN**  
 PRINCIPAL  
 414.203.3038  
 jhoffman@boerke.com

**CHAD VANDE ZANDE**  
 PRINCIPAL  
 414.203.3049  
 cvandezande@boerke.com

**NICK UNGER**  
 PRINCIPAL  
 414.203.3016  
 nunger@boerke.com

**LINDSEY COAKLEY**  
 REAL ESTATE ADVISOR  
 414.203.3025  
 lcoakley@boerke.com

**MILWAUKEE OFFICE**  
 731 N Jackson Street  
 Suite 700  
 Milwaukee, WI 53202

**MADISON OFFICE**  
 33 E Main Street  
 Suite 241  
 Madison, WI 53703

**Boerke.com**

The Boerke Company, Inc. / Independently Owned and Operated / A Member of the Cushman & Wakefield Alliance

Cushman & Wakefield Copyright 2024. No warranty or representation, express or implied, is made to the accuracy or completeness of the information contained herein, and same is submitted subject to errors, omissions, change of price, rental or other conditions, withdrawal without notice, and to any special listing conditions imposed by the property owner(s). As applicable, we make no representation as to the condition of the property (or properties) in question.

# STATE OF WISCONSIN

## DISCLOSURE TO NON-RESIDENTIAL CUSTOMERS

Prior to negotiating on your behalf the brokerage firm, or an agent associated with the firm, must provide you the following disclosure statement:

### DISCLOSURE TO CUSTOMERS

You are a customer of the brokerage firm (hereinafter Firm). The Firm is either an agent of another party in the transaction or a subagent of another firm that is the agent of another party in the transaction. A broker or a salesperson acting on behalf of the Firm may provide brokerage services to you. Whenever the Firm is providing brokerage services to you, the Firm and its brokers and salespersons (hereinafter Agents) owe you, the customer, the following duties:

- (a) The duty to provide brokerage services to you fairly and honestly.
- (b) The duty to exercise reasonable skill and care in providing brokerage services to you.
- (c) The duty to provide you with accurate information about market conditions within a reasonable time if you request it, unless disclosure of the information is prohibited by law.
- (d) The duty to disclose to you in writing certain Material Adverse Facts about a property, unless disclosure of the information is prohibited by law. (See Definition of Material Adverse Facts below).
- (e) The duty to protect your confidentiality. Unless the law requires it, the Firm and its Agents will not disclose your confidential information or the confidential information of other parties.
- (f) The duty to safeguard trust funds and proposals in an objective and unbiased manner and disclose the advantages and disadvantages of the proposals. other property held by the Firm or its Agents.
- (g) The duty, when negotiating, to present contract proposals in an objective and unbiased manner and disclose the advantages and disadvantages of the proposals.
- Please review this information carefully. An Agent of the Firm can answer your questions about brokerage services, but if you need legal advice, tax advice, or a professional home inspection, contact an attorney, tax advisor, or home inspector. This disclosure is required by section 452.135 of the Wisconsin statutes and is for information only. It is a plain-language summary of the duties owed to a customer under section 452.133(1) of the Wisconsin statutes.

### CONFIDENTIALITY NOTICE TO CUSTOMERS

The Firm and its Agents will keep confidential any information given to the Firm or its Agents in confidence, or any information obtained by the Firm and its Agents that a reasonable person would want to be kept confidential, unless the information must be disclosed by law or you authorize the Firm to disclose particular information. The Firm and its Agents shall continue to keep the information confidential after the Firm is no longer providing brokerage services to you.

- The following information is required to be disclosed by law:
  1. Material Adverse Facts, as defined in Wis. Stat. § 452.01(5g) (see "Definition of Material Adverse Facts" below).
  2. Any facts known by the Firm or its Agents that contradict any information included in a written inspection report on the property or real estate that is the subject of the transaction.

To ensure that the Firm and its Agents are aware of what specific information you consider confidential, you may list that information below. At a later time, you may also provide the Firm or its Agents with other Information you consider to be confidential.

### CONFIDENTIAL INFORMATION:

---

---

---

### NON- CONFIDENTIAL INFORMATION (the following information may be disclosed by the Firm and its Agents):

---

---

---

(Insert information you authorize to be disclosed, such as financial qualification information.)

### DEFINITION OF MATERIAL ADVERSE FACTS

A "Material Adverse Fact" is defined in Wis. Stat. § 452.01(5g) as an Adverse Fact that a party indicates is of such significance, or that is generally recognized by a competent licensee as being of such significance to a reasonable party, that it affects or would affect the party's decision to enter into a contract or agreement concerning a transaction or affects or would affect the party's decision about the terms of such a contract or agreement.

An "Adverse Fact" is defined in Wis. Stat. § 452.01(1e) as a condition or occurrence that a competent licensee generally recognizes will significantly and adversely affect the value of the property, significantly reduce the structural integrity of improvements to real estate, or present a significant health risk to occupants of the property; or information that indicates that a party to a transaction is not able to or does not intend to meet his or her obligations under a contract or agreement made concerning the transaction.

### NOTICE ABOUT SEX OFFENDER REGISTRY

You may obtain information about the sex offender registry and persons registered with the registry by contacting the Wisconsin Department of Corrections on the Internet at <http://www.doc.wi.gov> or by telephone at 608-240-5830.