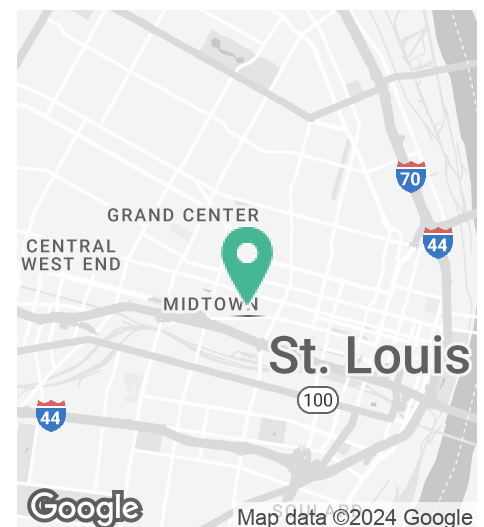




### Offering Summary

Lease Rate:	\$6.00 SF/yr (MG)
Available SF:	27,450 SF
Sublease Expiration:	3/31/2030

- 40% office finish
- 2 docks; 1 drive-in
- 14' clear height
- +/- 6,000 SF of fenced outdoor storage available
- Zoning: J - Industrial District



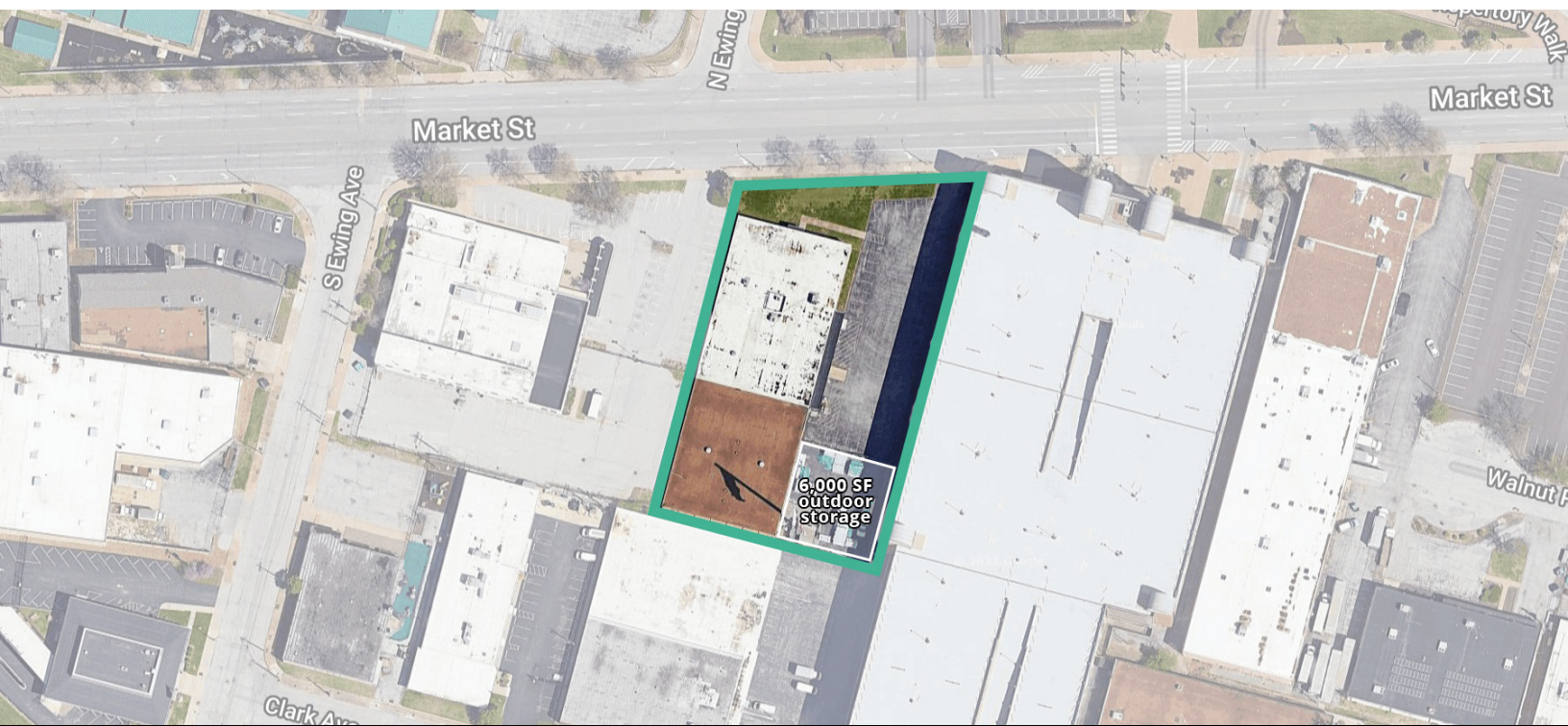
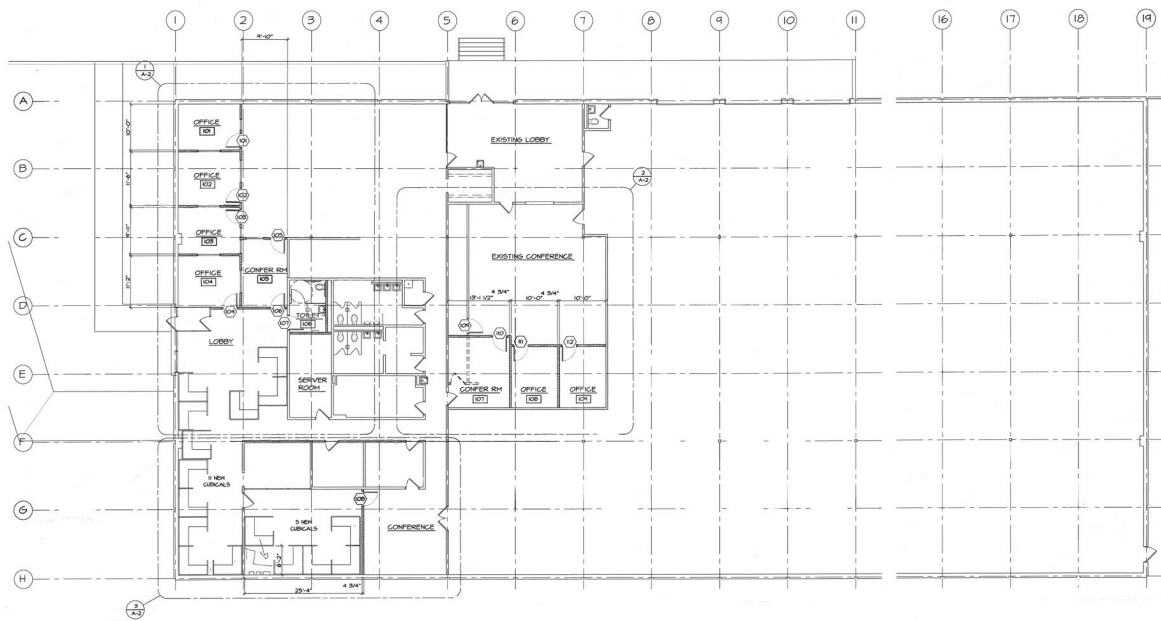
### Get more information

**Mark Dorsey**  
Principal  
D 314 785 7623  
C 314 580 1142  
mark.dorsey@avisonyoung.com

**Rick Dames**  
Managing Director  
D 314 785 7605  
rick.dames@avisonyoung.com

# Industrial property sublease

2820 Market Street



### Mark Dorsey

Principal  
D 314 785 7623  
C 314 580 1142

[mark.dorsey@avisonyoung.com](mailto:mark.dorsey@avisonyoung.com)

### Rick Dames

Managing Director  
D 314 785 7605  
[rick.dames@avisonyoung.com](mailto:rick.dames@avisonyoung.com)