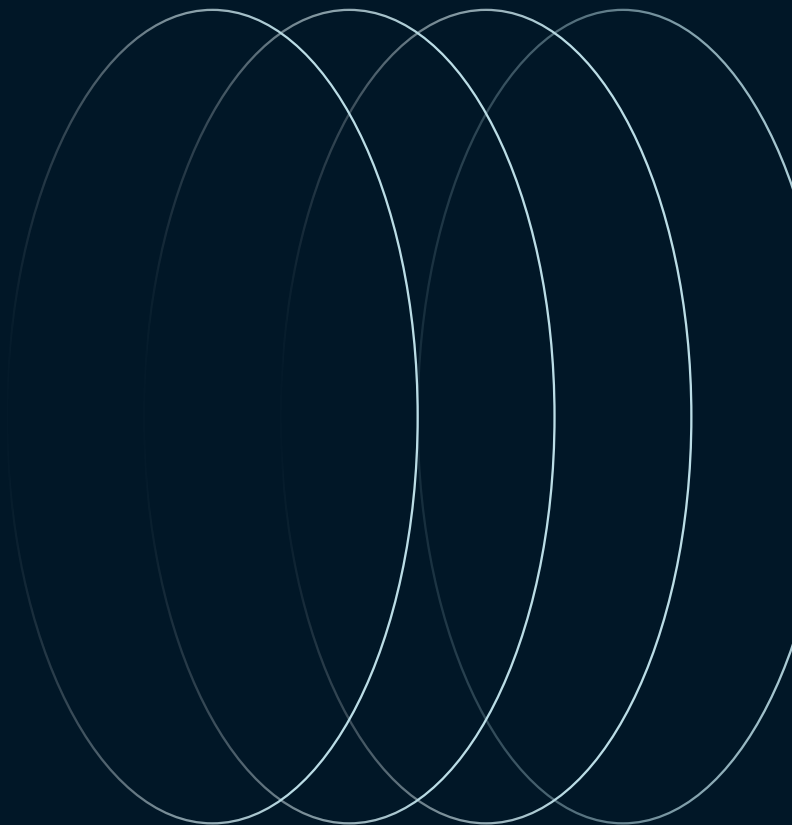
 **JLL** SEE A BRIGHTER WAY

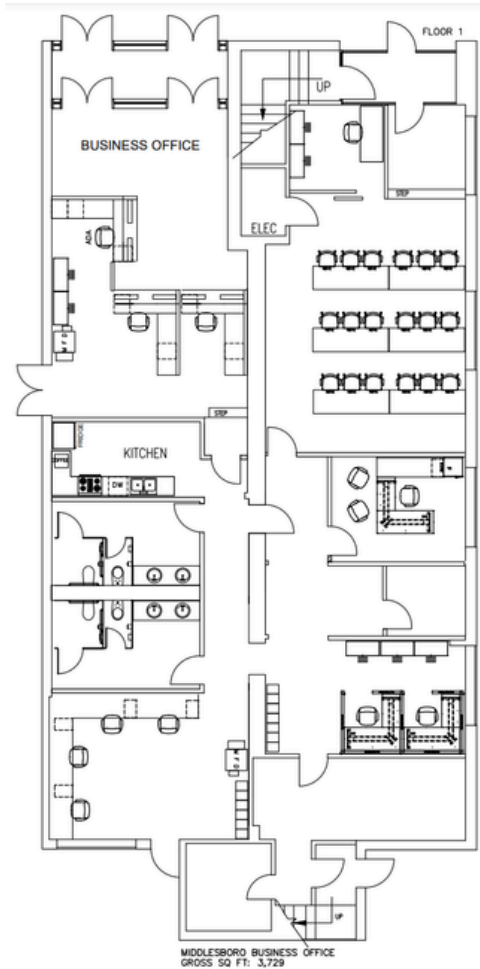
# For sale

2201 Cumberland Avenue  
Middlesboro, KY 40965

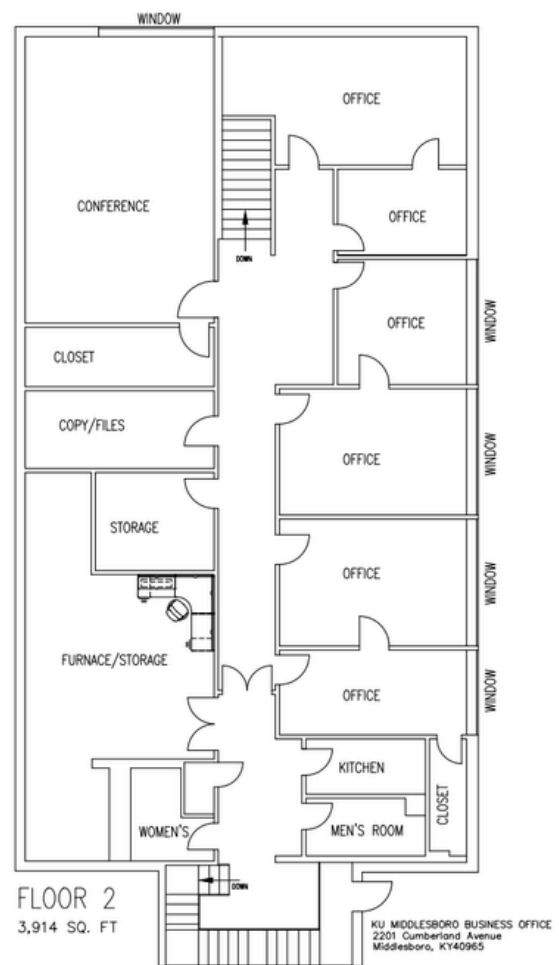


# For sale

First floor



Second floor



## Property description

- Highly visible location at the corner of West Cumberland Ave and S 22nd St.
- 8,589 SF 2-story office building
- Recent full renovation of the first floor
- Mechanical, electrical, and plumbing systems new as of 2022.
- 0.26 Acres
- Approximately 19 on-site parking spaces
- Easy ingress and egress
- Zoned B-3

JLL

**Powell Spears, SIOR**  
Powell.Spears@jll.com  
(502) 394 2509

**Doug Owen, SIOR**  
Doug.Owen@jll.com  
(502) 777 4724

**Matthew Hartlage, SIOR**  
Matthew.Hartlage@jll.com  
(502) 394 2517