

Land ★ SALE

1350 SAMUELS AVE FORT WORTH, TX 76102

0.75 ACRES



Finn Wilson
817-713-8771
fwilson@lancartecre.com

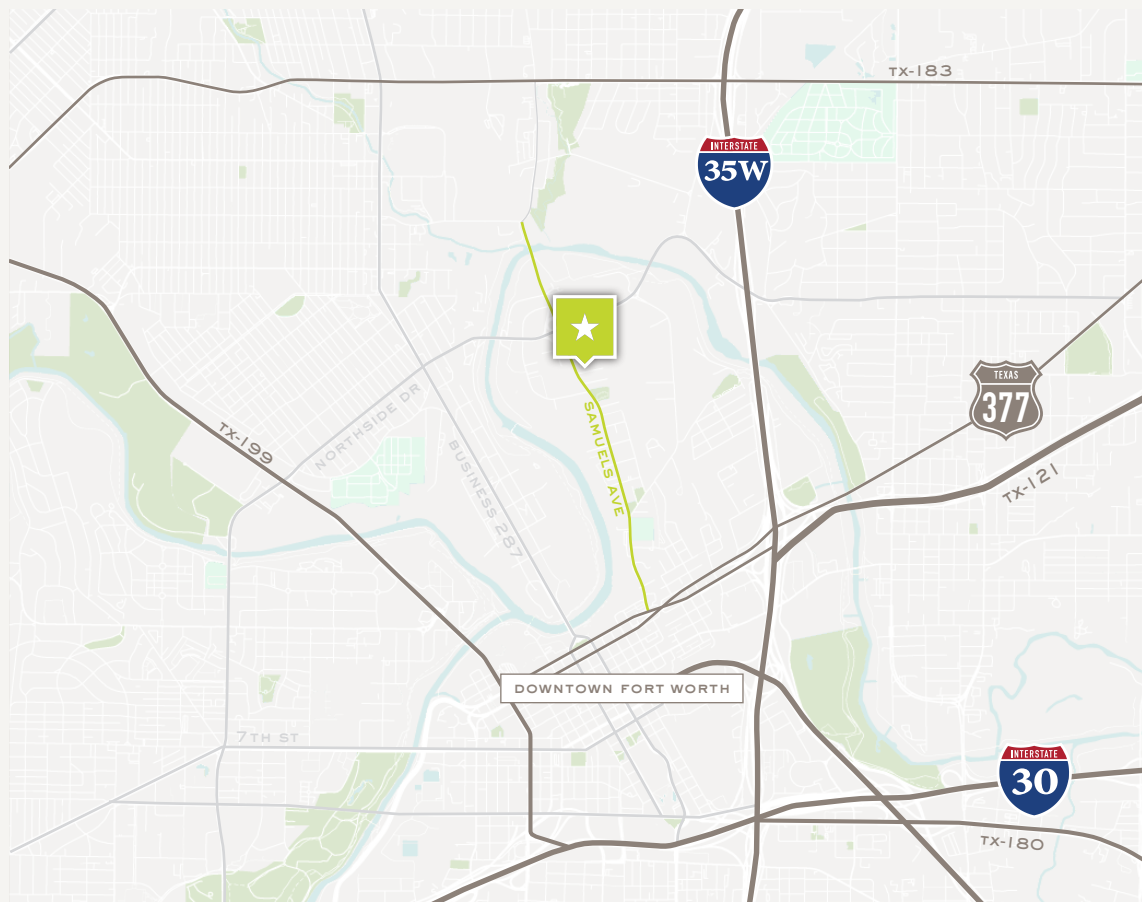
Matt Murff
806-674-2118
mmurff@lancartecre.com

Land ★ SALE

1350 SAMUELS AVE

0.75 ACRES

LanCarteCRE.com



PROPERTY FEATURES

- 0.75 Acres of Land (32,670 SF)
- Frontage on Samuels Avenue
- Located on the Southwest Corner of Samuels Avenue and 11th Street
- Zoning: PI - Panther Island
- Directly Across from Americold- Cold Storage

LOCATION OVERVIEW

Strategically located just minutes from Downtown Fort Worth, 1350 Samuels Ave offers excellent access to I-35W, Panther Island, and the Trinity River. Positioned in a high-growth corridor surrounded by new multifamily and commercial development, the site presents a prime opportunity for commercial redevelopment or investment. The area benefits from ongoing public and private investment, enhancing long-term value and demand.

SALE PRICE

Contact Broker

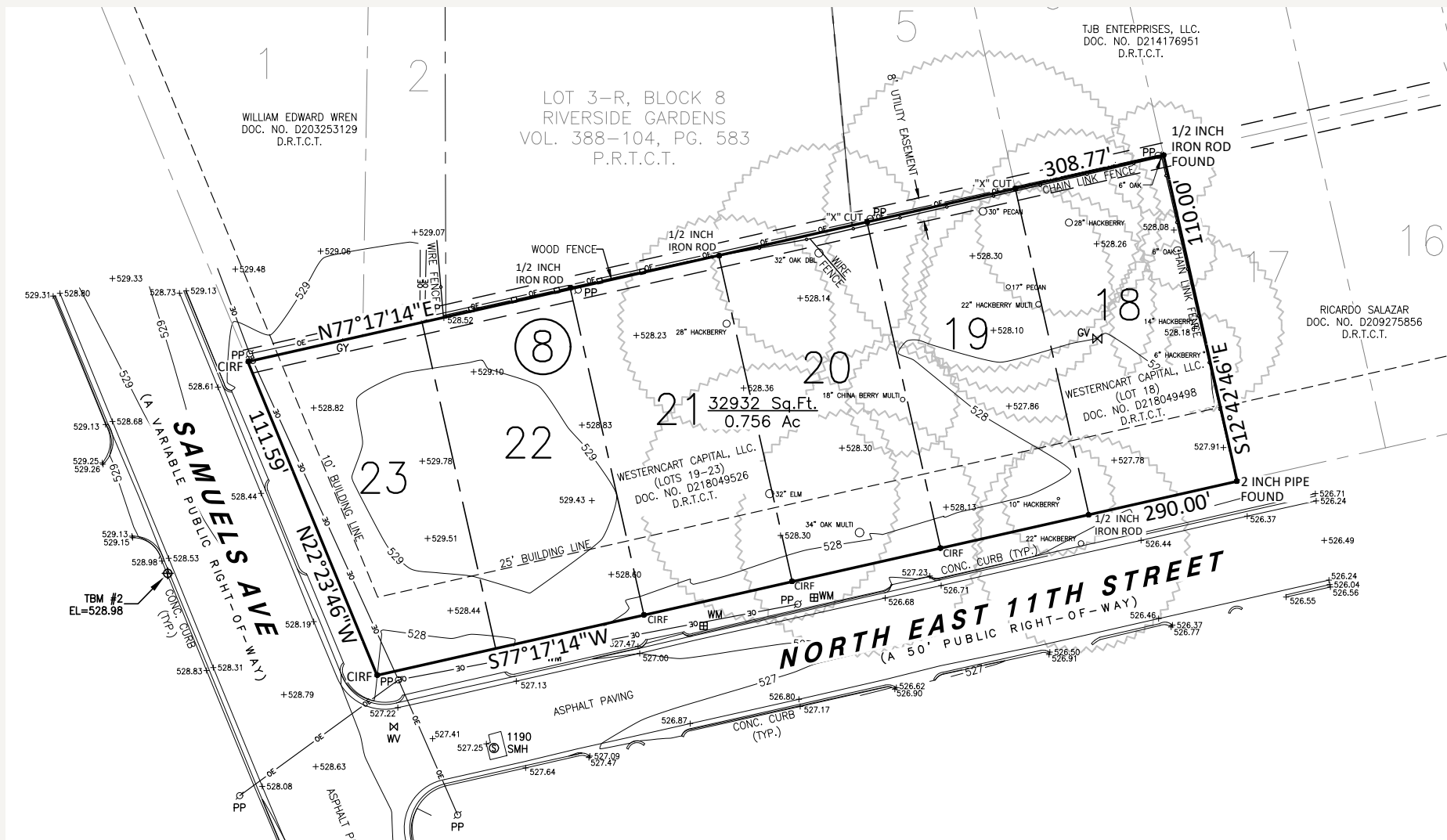


Land ★ SALE
1350 SAMUELS AVE

0.75 ACRES

LanCarteCRE.com

SURVEY



Land ★ SALE
1350 SAMUELS AVE

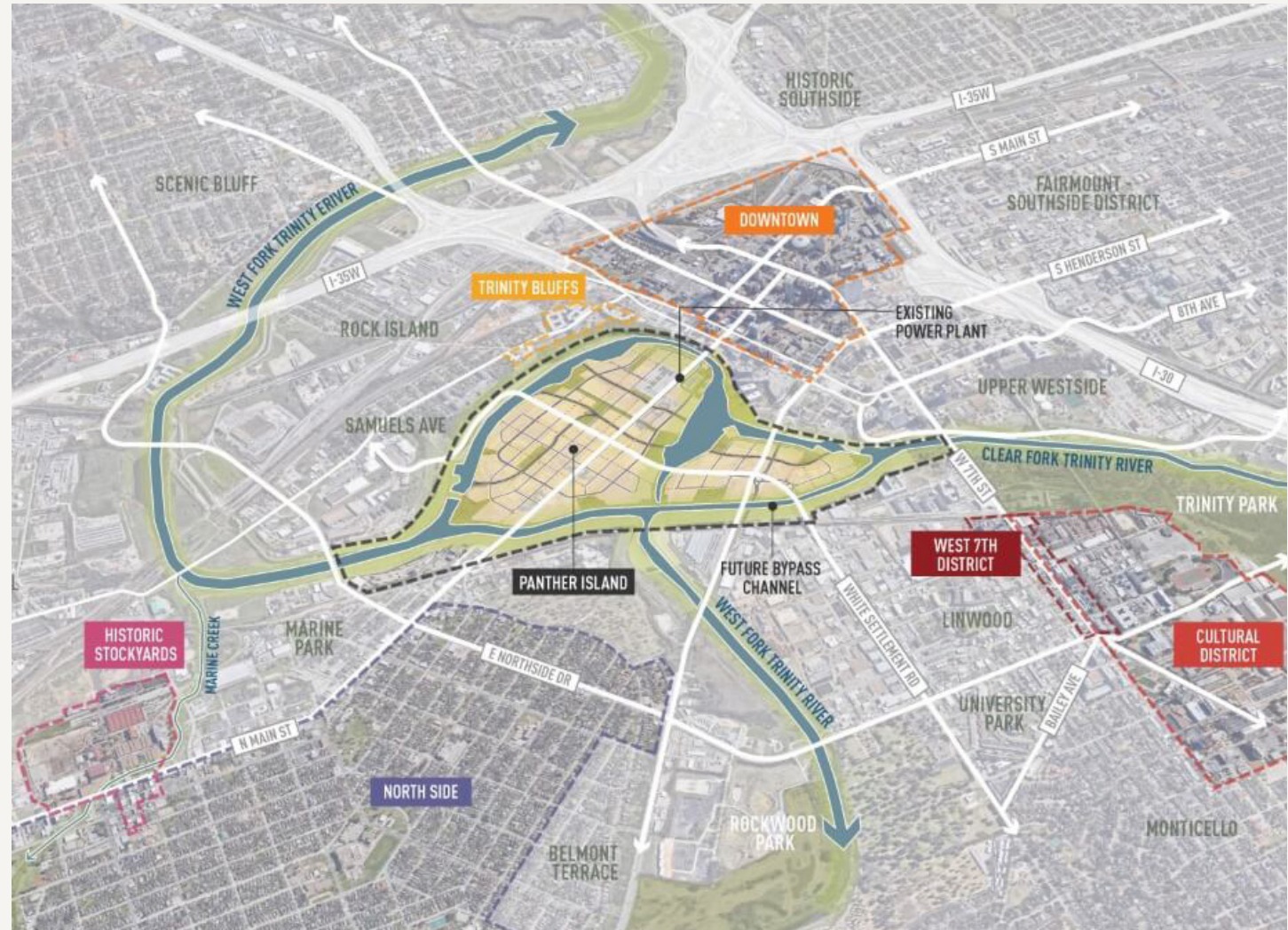
0.75 ACRES

LanCarteCRE.com

PANTHER ISLAND ZONING USE CHART:

Permitted Uses:

- Office
- Retail sales & services
- Vehicle sales & services
- Light industrial





LANCARTE

COMMERCIAL

BROKERAGE ★ PROPERTY MANAGEMENT

Relentlessly Pursuing What Matters

Finn Wilson

817-713-8771 | fwilson@lancartecre.com

Matt Murff

806-674-2118 | mmurff@lancartecre.com

The information provided herein was obtained from sources believed to be reliable. However, LanCarte Commercial makes no guaranties, warranties or representations as to the completeness or accuracy thereof. The presentation of this property is submitted subject to errors, omissions, change of price or conditions, prior to sale or lease, or withdrawal without notice. Copyright 2025 LanCarte Commercial Real Estate, LLC.